

MICROSOFT®

When you start with us,
you can stay with us.

Guide to
Microsoft products
for the MS-DOS®
and XENIX®
operating systems.

Consumer Audio Incorporated
11705 Wellington
Morristown, NJ

Clifford Swain
Central Audio/Video
2202 W. Market Street
Chapel Hill, NC 27514

Dear Mr. Swain:

As a major supplier of compact disc players, we would like to introduce you to Consumer Audio. Our products include compact disc equipment and accessories including the latest compact disc players.

Compact discs have revolutionized the art of sound recording. This universal standard for home-use audio has made compact disc players the best-selling related equipment and accessories.

As shown in the table below, the unit demand for compact disc players is increasing. Consumer Audio is committed to supply compact disc players to capitalize on this tremendous opportunity.

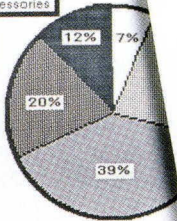
Unit Demand for Compact Disc Players

1984	208,000
1985	600,000
1986	900,000
1987	1,100,000

You'll notice the market has more than doubled since 1984. This ever increasing market for compact disc players offers a tremendous opportunity for compact disc accessories.

Home Audio Market
1986

Accessories



Compact Disc Players

Projected market share of the compact disc segment is marked

I. MICROSOFT WORD 3 OUTLINES ITS OWN ADVANTAGES

- A. In writing, there's virtue in planning.
- B. Precisely what Word does
 - 1. Break complex subject down into arguments
 - 2. List these elements as headings
 - 3. Juggle order and level of paragraphs
- C. Outline and document are linked
 - 1. Jump between outline and document
 - 2. Collapse manuscripts down to outline
 - 3. Restructure the entire piece
- D. Even ad writing could benefit
 - 1. Live Demonstration
 - 2. Live Demonstration
 - a. (Ad outline goes here)
- E. Word delivers what it promises
 - 1. What You See (on the screen) is what you get (on the page)--WYSIWYG
 - a. Boldfaces, underlines, italics
 - b. Superscripts, subscripts
 - c. Headers, footers, footnotes
 - F. Word squeezes the most out of your money
 - 1. Drives over 100 different fonts
 - a. Dot matrix
 - b. Impact
 - c. Laser
 - 2. Take advantage of the full power of your computer
 - a. An extensive character set
 - b. Multiple fonts
 - c. Proportional spacing
 - d. Microjustification
- G. Word Saves Time
 - 1. Style sheets
 - a. Save copy
 - b. Set up for printing
 - 2. Glossaries
 - a. Save and reuse
 - b. Contrast
 - 3. "Windowing"
 - a. View multiple documents at the same time
 - b. Copy and paste
 - c. Save and print files

Microsoft. The software you can use right now. And years from now.

The Microsoft program you just bought has a lot in common with all of our other programs—each one is designed to be easy enough to start with. And powerful enough to stay with.

There are Microsoft programs that can help you do anything from planning a project to writing a proposal to creating presentation-quality charts. In short, the kinds of things you do in business every day.

That's why every day more businesses discover Microsoft programs. And find out that our software lets them run their business better by getting the job done faster. One reason is that each program takes full advantage of the latest advances in hardware and software technology. Advances like laser printing and enhanced graphics displays.

Yet each program is also designed to be easy to start with. So you can be productive from the very first day. The key—a simple and intuitive design for every program. Plus on-line help and training materials that take you well beyond the basics. All backed up with a superb system of direct telephone support.

And Microsoft business products aren't copy-protected, so you can use them in whatever way is convenient for you. What's more, our programs share common commands. So once you've learned one, you're well on your way to learning all the others.

You'll also discover that each Microsoft program has the future built right in. Which means as your needs grow, the program you're using can keep up with you.

And, as we add new capabilities to products, we'll provide you with reasonably priced updates. To be sure that you will receive notification of these updates, take a moment right now to fill out the registration card included in this package.

Microsoft. The software to choose when you want to use it right now. And years from now.

...soft
...anced
...winning.
...g program—
...e Best of
...d the
...PC World.

...business look its best,
...re professional
...n your printed
...t reports. While helping
...work done, more

...new version of Microsoft
...es all the things all these
...word processors do. And a
...fastest way ever to organize,
...ate, and print professional-quality
...documents.

...Consider just one of its new built-in
...Features: outline processing,
...probably think in key ideas, filling in
...the details for those ideas later.

...Microsoft Word is the first word
...processor that's smart enough to think
...like you do. You can start by typing
...in thoughts as they come to mind.
...then add structure, by putting groups
...related ideas into an outline.
...prioritize. And before you
...produced your final

...ns more
...ize

numbering scheme when blocks of
copy are moved or removed.

We put a lot of other good thinking
into Microsoft Word, too. Such as the
ability to handle multiple documents
in separate windows on the screen,
allowing you to quickly move text
back and forth between them.

You can create newspaper-style
columns or columns of numbers.
Move those columns around. Perform
simple math operations within them.
Even organize and sort through lists
in either alphabetic or numeric order.

All these out-of-the-ordinary features
can be extraordinarily handy—
whether you're writing a simple memo
or producing an encyclopedic report.

And just imagine how good you'll
look print. To many people, you are
what you write, since that's all they
ever see of you. And Microsoft Word
gives you the ideal means of
committing ideas to paper, with
sophisticated tools that allow you to
bring a consistent look of quality to
all of your documents.

What you see on the screen is
impressive, since an optional graphics
card allows Microsoft Word to display
special character formatting such as
**bold, italics, single- and double-
underlines, strikethroughs,**
superscripts, and **subscripts**.

But Microsoft Word is even more
stunning on paper. Because what you
see on the screen is what you'll get on
your printout.

Microsoft Word works with all of
today's leading printers. Such as the
generation of laser printers,
at your desk.
portional spacing,
the ability to

Microsoft® Word. When the outcome depends on the output.

Microsoft Word Version 3.1 is designed to do a lot of things well. But perhaps what it does best is help your business look its best by bringing a more professional appearance to all your printed documents.

And this new version of Microsoft Word takes performance and speed to new heights, giving you the fastest way ever to organize, create, and print professional-quality documents.

Outlines, windows, columns, and more.

Microsoft Word is the first word processor with a built-in outlining capability that lets you organize your thoughts easily and quickly. Start by typing in ideas as they come to mind. Then add structure by putting groups of associated ideas into an outline. Before you know it, you've produced your final document.

We put a lot of other good thinking into Microsoft Word, too. Such as the ability to use up to eight windows to get different views of your documents.

You can also create newspaper-style columns, columns of numbers, or side-by-side paragraphs. And it's simple to move columns around, perform math within them, even organize and sort through lists in either alphabetic or numeric order.

Microsoft Word comes with many other helpful tools, such as its built-in style sheets. They let you store any number of special formats, and you can add them to a document with just a couple of keystrokes.

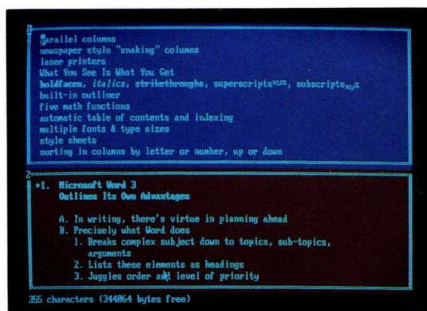
And you can even check a dictionary or a 220,000-synonym thesaurus without leaving the program.

And just imagine how good you'll look in print.

When it comes to business correspondence, you *are* what you write, since that's all many people ever see of you. And one of Microsoft Word's strongest points is the way it lets you bring a consistent look of quality to all your documents.

What you see on the screen is impressive, since an optional graphics card allows Microsoft Word to display special character formatting such as **bold**, *italics*, single- and double-underlines, ~~strikethroughs~~, superscripts^{xyz}, and subscripts_{xyz}.

But Microsoft Word is even more stunning on paper. Because what you see on the screen is what you'll get when you print.



Microsoft Word works with all of today's leading printers.

Including the latest generation of laser printers, which give you typeset-quality printouts right at your desk. Complete with proportional spacing, microjustification, and the ability to mix multiple fonts. And Microsoft Word also works with more than 120 of the most popular dot matrix and letter-quality printers, driving them to perform their best.

Microsoft Word can help just about any office get more done in less time. For instance, Word's what-you-see-is-what-you-get screen display and laser printer compatibility make Word a natural for desktop publishing applications.

Another reason Microsoft Word is so good to have around the office is its built-in conversion programs, including one that lets you convert to and from DCA formats for easy file exchange with mainframes.

There's even a network version of Microsoft Word that lets groups of people share files and printers.

We've included a tutor in every box.

Learning Microsoft Word, our highly acclaimed computer-based training program, has been updated for Version 3.1. It's an interactive, self-paced tutorial that guides you step-by-step through the program.

Microsoft Word. The Word is out. And now you—and your business—can look better than ever.

System Requirements

- IBM® Personal Computers or compatibles
- 256K memory (or 216K available user memory)
- DOS 2.0 or higher
- Two double-sided disk drives or one drive and a hard disk

- Optional**
- Microsoft Mouse (bus, serial, or InPort™ version)
 - Graphics adapter card (required to display some on-screen character formatting)

Note: Also available in 3½" disk format.

9th Street Folks, Inc.
Educational Films
2899 West 22nd Street
Sencer, N.Y. 10010
October 15, 1986

October 15, 1986
Page Two

ption your unusual screenplay
chine and his subsequent
t. I believe the special effects
afraid, however, that our
ts. This is a measure our
nsolicited lawsuits.

production budgets would enable
t. I believe the special effects
more appropriate to a George
such as ours.

out the viability of certain of your
of verisimilitude. If Halley was
an would find him more of

Microsoft Access. We don't call it the Great Communicator for nothing.

Getting information from one computer to another is no longer the chore it once was. Thanks to Microsoft Access. No other software package solves so many communications problems so easily. Or with so much flexibility. Because no other communications software package lets you customize it the way Access does.

You can automate virtually any kind of communications operation. Either for yourself or for your entire office. That means an MIS department, for instance, could create a friendly mainframe environment for non-technical professionals.

Microsoft Access lets you use a powerful, BASIC-like command language called MASC to write personalized applications. You can even create your own Custom Menus. So if people using Access need, say, sales figures from the company mainframe, they simply press "S" for "Sales." And so on. Those are the same kinds of built-in Custom Menus that you can use to get information from popular on-line services, such as Dow Jones News/Retrieval® and NewsNet®. With Microsoft Access, you can use the same command to do the same thing every time. Even with different services.

```
'Call Dow Jones, retrieve portfolio data, then export to Multiplan
While TIMES()<="6:00"      'wait until 6am
  Send "DOWJONES"
  Connect "DOWJONES"
  IF ERROR then goto CALL  'redial if fail
  Send "/C/"
  Match "ENTER QUERY"
  Send "TIM AAPL NSFT LOTS TATE"
  Match "DIVIDEND"
  Capture "PORT.DOC"      'open capture file
  FILE #
  Capclose
  Send "DISC"
  Disconnect
  IF EXISTS("PORT.SLK") then rename "PORT.SLK" "PORTSLK.BAK"
  Runprog "EXPORT PORT.DOC -f mp -c 1:10,21:30,31:40 -o PORT.SLK",0,0

TRANSFER VIEW FILE filename: STOCKS.SCR
End of file. Press Esc for menu
SESSION                      Access: DOWJONES OFFLINE L2M1
```

More great communications skills.

Microsoft Access does more than communicate with other computers. It also communicates with other programs.

Access converts the data captured on-line into a form that you can use in programs like Microsoft Chart, Microsoft Multiplan®, or Lotus® 1-2-3®.

Access puts you in control of your communications sessions in other ways, too. Like letting you automatically search through a dozen on-line databases for historical information about a company. Or carry on eight communications sessions concurrently (using the X.PC protocol).

Microsoft Access. When it comes to customizing your communications, it's the greatest.

System Requirements

- IBM Personal Computers or compatibles
- 256K memory
- DOS 2.0 or higher
- Two double-sided disk drives or one drive and a hard disk
- Asynchronous communications adapter
- Modem (required for using communications services)

Optional

- Custom Menu Compiler (for creating Custom Menus)

Note: Also available in 3½" disk format.

Microsoft Multiplan. The business spreadsheet millions count on.

More than a million people around the world have already picked the Multiplan electronic worksheet program for their businesses.

Now our newest MS-DOS® version of this popular program—Version 2.0—takes it further than it's ever gone before, with an expanded working area (4095 rows by 255 columns); faster-than-ever performance (faster than even the latest version of Lotus 1-2-3 in most uses); and macros (which let you reduce lengthy command sequences to a single keystroke).

There's support for 8087/80287 math coprocessors. Plus a "sparse matrix memory management" technique that allows you to build larger models.

So whether you've got a lot to get into a spreadsheet, or a lot to get done quickly, Microsoft Multiplan is the smart choice for your business.

It can do some things you've never seen in a spreadsheet before. Like consolidate data from multiple spreadsheets—such as 12 monthly budgets—into a single comprehensive summary. And Multiplan can consolidate that information in batches, instead of dealing with each spreadsheet one by one.

You can also link a series of spreadsheets together, so that any changes made on one are automatically reflected in all the others. Which means you can work with information in manageable pieces. Build large models. And transfer data without retyping.

The screenshot shows a spreadsheet titled "FINANCIAL EVALUATION OF PROJECT MUNDO". The columns are labeled "1st Qtr 1985", "2nd Qtr 1985", and "TOTAL 1984". The rows include "Net Sales Revenue", "Cost of Goods Sold", "GROSS PROFIT", "OPERATING EXPENSES", "Salaries", "S.G.A. n", and "Depreciation". A status bar at the bottom shows "INTERNAL RATE OF RETURN = 21.35%".

	1st Qtr 1985	2nd Qtr 1985	TOTAL 1984
7 Net Sales Revenue	\$1,580	\$1,468	\$6,788
8 Cost of Goods Sold	\$1,080	\$1,096	\$4,485
9			
10 GROSS PROFIT	\$500	\$564	\$2,295
11			
12 OPERATING EXPENSES			
13 Salaries	\$188	\$145	\$485
14 S.G.A. n	\$58	\$54	\$219
15 Depreciation	\$45	\$45	

COMMAND: Blank Copy Delete Edit Format Goto Help Insert Lock Move
Name Options Print Quit Sort Transfer Value Window Xterm)
Select option or type command letter
1987 (DATE-CODE) ? 98x Free Multiplan: 508077.MP

Power without the pain. Or the price.

For all its power, Microsoft Multiplan is remarkably easy to manage. With on-line, single-keystroke help. And built-in support for the optional Microsoft Mouse.

What's more, Multiplan can read and write Lotus 1-2-3 files, allowing you to share spreadsheets painlessly from one personal computer to another. Or you can link Multiplan directly to Microsoft Chart to produce presentation-quality graphics.

Microsoft Multiplan. Its combination of high performance and low price makes it an exceptional value.

System Requirements

- A personal computer running the MS-DOS operating system
- 128K memory (256K recommended)
- DOS 1.1 or higher
- One double-sided disk drive or one drive and a hard disk

Optional

- Microsoft Mouse (bus, serial, or InPort version)

Note: Also available in 3½" disk format.

Microsoft Chart. See it your way.

With Microsoft Chart Version 2.0, you can produce graphics of boardroom-quality that let you quickly show exactly what you mean to say.

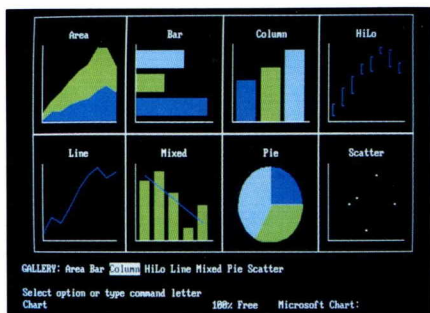
For instance, you can choose from its unique gallery of eight chart types to automatically create area, bar, column, hi-lo, line, mixed, pie, and scatter charts. Select from one of 45 pre-formatted charts, or design your own chart.

And from all those versatile capabilities, put together the single chart that communicates your ideas the best.

You can define up to 177 colors (depending on your output device). Add movable text—in countless type styles and sizes—anywhere you want. Combine and overlay charts. Move and size components. Insert arrows, hatch patterns, and grid lines. Fine-tune your image on the screen. View it in 16 crisp colors if you're using an IBM Enhanced Graphics Adapter. Then print it out on more than 60 leading output devices, including dot matrix printers, laser printers, and color plotters.

Chart links directly to Lotus 1-2-3, Microsoft Multiplan, dBASE III™, and R:base 5000™. So when the numbers change, the charts change right along with them. And you can enter data directly from many other popular programs, too, including any program that uses DIF, ASCII, or SYLK formats.

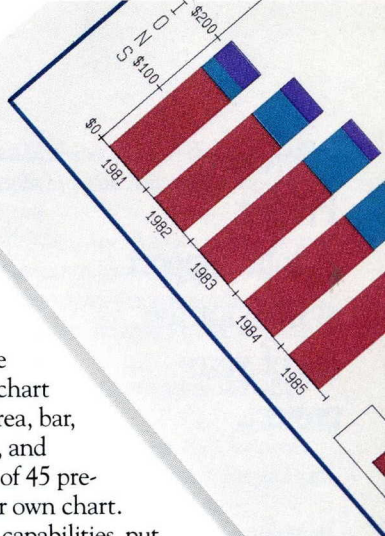
Microsoft Chart. Now you can see it your way.



System Requirements

- IBM Personal Computers or compatibles
- 256K memory
- DOS 2.0 or higher
- One double-sided disk drive or one drive and a hard disk
- Graphics adapter card:
 - IBM Color/Graphics Monitor Adapter, IBM Enhanced Graphics Adapter, IBM 3270 PC XGA and APA
 - Hercules™ Graphics Card
 - AT&T 640x400 Monochrome Graphics Card

Note: Also available in 3½" disk format.



Microsoft Project. A total support system for the life of your project.

Microsoft Project Version 3.0 is a comprehensive project scheduling and costing program that can keep even your biggest projects on track.

You'll get exactly the information you need to make any project run smoothly. Monitor schedules and cash flow. Identify potential delays. And discover problems before they hit the bottom line.

You do the easy part. We do the hard part.

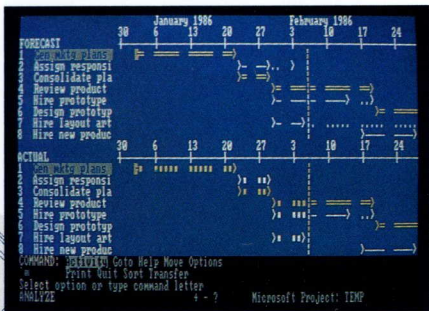
With Microsoft Project, taking charge of any project is easy. You simply enter data the same way you do on a spreadsheet. Then Microsoft Project cranks out the PERT and Gantt charts for you. The other project management tools you need are there as well, like tracking of Plan vs. Actual. ASAP and ALAP scheduling. Creation of custom calendars for individual resources. Plus the ability to schedule from minutes to over a 100 years.

You can also monitor the timing and resource needs of many subprojects within a master schedule. Sort through and analyze data. And produce 18 different printed reports.

Getting started with Microsoft Project is easy, too. Because we've included an interactive 30-lesson training disk.

You can use Microsoft Project with leading networks, too. Including Ungermann-Bass Net/One®, IBM PC Network, Novelle Netware™, 3Com® EtherSeries™, and Microsoft Networks. And you can pass information to software packages like Lotus 1-2-3, Microsoft Multiplan, Microsoft Chart, dBASE II®, and Primavera Project Planner®. You can even load information from Microsoft Project into mainframe project management packages.

Microsoft Project. It keeps you on the critical path to success.



System Requirements

- A personal computer running the MS-DOS operating system
- 256K memory
- DOS 2.0 or higher
- Two double-sided disk drives or one drive and a hard disk

Optional ■ Microsoft Mouse (bus, serial, or InPort version)

Note: Also available in 3 1/2" disk format.
Training disk requires IBM Personal Computer or compatible.

Microsoft Mouse. The mouse with the most.

More PC programs support the Microsoft Mouse than any other pointing device. And more people buy the Microsoft Mouse than any other.

Why? Well, for one thing, the Microsoft Mouse operates at twice the resolution of most other mice. So you get faster, better control over your computer. And it works on any surface, without requiring any special pads. Plus it's designed to fit any size hand comfortably.

The Microsoft Mouse also includes two pieces of valuable business presentation software.

You get Show Partner™, an amazing program that lets you create animated slide shows with your PC. They can range from simple consecutive screens to elaborate presentations.

You also get Microsoft Paintbrush®, a color graphics program that you can use to create freehand drawings or to enhance existing charts and graphs.

What's more, the Microsoft Mouse also comes with Expert Mouse Menus that let you get the benefits of the mouse with programs like Lotus 1-2-3, DisplayWrite 3™, and MultiMate®.

The Microsoft Mouse. It adds new muscle—and new speed—to help you make the most of your machine.

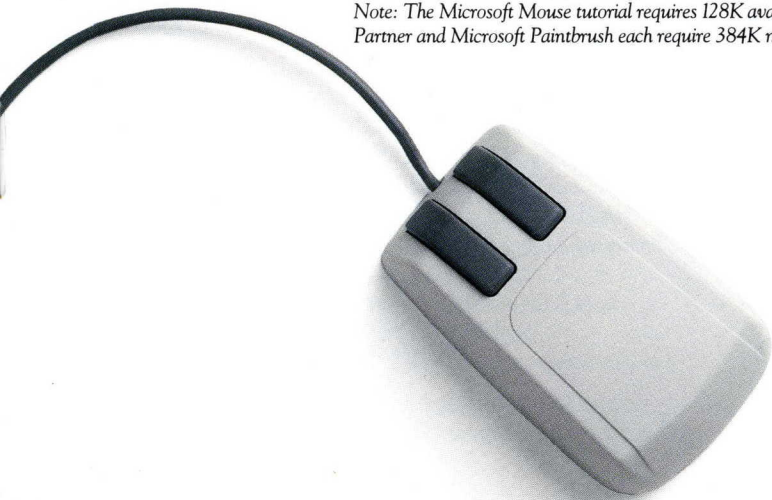
System Requirements

- IBM Personal Computers and compatibles
- 12K available user memory
- DOS 2.0 or higher
- One double-sided disk drive

Available Versions

- **Bus version** (uses slot in machine for auxiliary card)
- **Serial version** (uses serial port)
- **InPort version** (uses Microsoft InPort device interface on auxiliary boards such as Microsoft MACH 10™)

Note: The Microsoft Mouse tutorial requires 128K available user memory. Show Partner and Microsoft Paintbrush each require 384K memory and graphics display.



Microsoft Windows. Power Windows—for driving all your software.

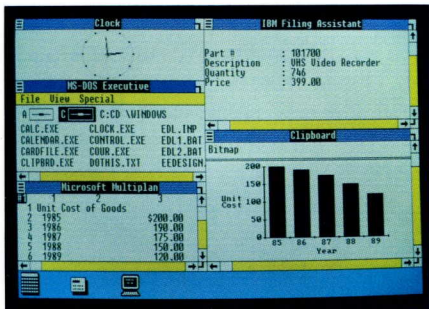
Microsoft Windows is the advanced new operating environment that bridges the gap between today's most popular—and tomorrow's most powerful—applications. Microsoft Windows lets you work with multiple applications and quickly switch between them without having to quit and restart each one. So you can take information from one program and use it in another.

When you use Microsoft Windows with a hard disk or a memory expansion card, you can swap programs and break through that 640K memory barrier. So you can run more programs than normally fit in memory at the same time. If you're using Windows applications, you can even run several programs at once.

We've included a dozen programs in the Microsoft Windows package, including a calendar, print spooler, clock, notepad, calculator, electronic cardfile, and a terminal program. Plus the MS-DOS Executive file manager for easy access to DOS commands.

Right now you also get *Microsoft Windows Write*, an easy-to-use word processor, and *Microsoft Windows Paint*, a drawing program.

These applications demonstrate the full power of this new graphical environment—complete with drop-down menus, icons, dialog boxes, and the ability to display multiple windows.



Minimum System Requirements

- IBM PC or 100% compatible (except IBM PCjr and IBM PC Convertible)
- 320K memory
- DOS 2.0 or higher
- Two double-sided disk drives
- Graphics adapter card

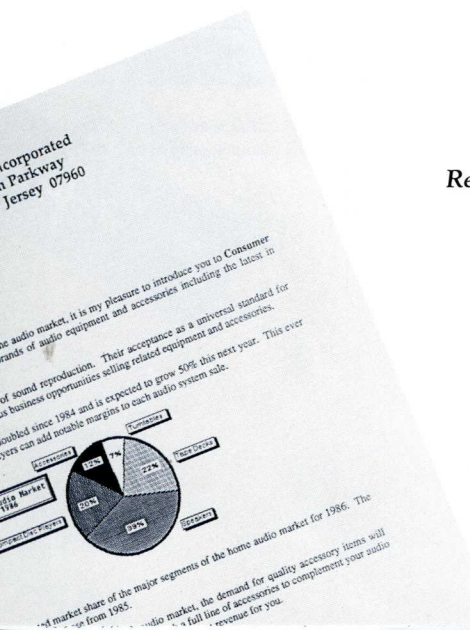
Recommended Memory and Disk Storage

- 512K memory
- One double-sided disk drive and a hard disk

Optional

- Microsoft Mouse (bus, serial, or InPort version) or other pointing device

Note: To get a color display with Windows, you'll need a personal computer equipped with the IBM Enhanced Graphics Adapter or compatible card. Color is **not** generated with an IBM Color/Graphics Monitor Adapter or compatible graphics adapter card.



Microsoft Windows Software Development Kit. Now you can do Windows.

The Microsoft Windows Software Development Kit gives you the tools you need to develop sophisticated, portable graphics applications. Applications that use popular Windows features such as drop-down menus and dialog boxes.

Programs you develop with the Microsoft Windows Software Development Kit are portable to any microcomputer running the Microsoft Windows operating environment. And you can take advantage of graphics devices and printers without the need to write drivers.

You can use one of the major microcomputer programming languages, including Microsoft C Compiler, Microsoft Pascal Compiler, and Microsoft Macro Assembler.

The Microsoft Windows Software Development Kit includes utilities, sample code, dialog editor, font editor, debugger, windows libraries, documentation, and more.

So if you want to do Windows, this is the one addition you should make to your development team.

System Requirements

- A personal computer running the Microsoft Windows operating environment
- 512K memory
- DOS 2.0 or higher
- Two double-sided disk drives or one drive and a hard disk (hard disk recommended)
- Graphics adapter card

Note: In addition to this development kit, you will also need the edition of Microsoft Windows that runs on the system for which you are developing software.

Microsoft languages. They keep you on the leading edge.

For a microcomputer language to be truly "leading edge," it must reflect the latest in hardware and operating system technology.

And every Microsoft language does.

Microsoft BASIC Interpreter*
Microsoft QuickBASIC Compiler
Microsoft C Compiler
Microsoft FORTRAN Compiler*
Microsoft Macro Assembler
Microsoft COBOL Compiler*
Microsoft COBOL Tools*
Microsoft Pascal Compiler*
Microsoft LISP
Microsoft muMATH™
Microsoft Sort

**Also available in XENIX versions.*

For details about Microsoft languages and programming tools, please visit your local Microsoft dealer.

Microsoft MACH 10. Transform your PC into a high performance Microsoft Windows machine.

Now your IBM PC, PC/XT, or Portable PC can give you accelerated Microsoft Windows performance. The kind of performance you get with the new generation of higher-speed machines. All it takes is a Microsoft MACH 10 performance enhancement board.

Just plug it in and Microsoft MACH 10—with its high-speed 8086 microprocessor—will make Microsoft Windows run up to twice as fast. And Microsoft MACH 10 will give all your software the same kind of big boost.

The one-slot Microsoft Windows solution.

In addition to giving you enhanced Windows performance, Microsoft MACH 10 comes with Microsoft InPort, the new graphic input device standard from Microsoft.

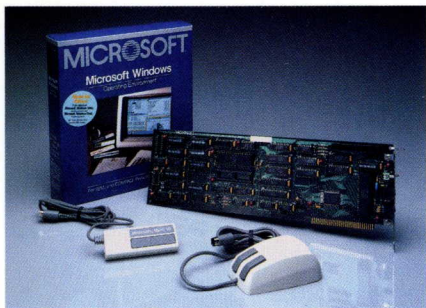
Now you don't have to sacrifice an empty slot or serial port when you want to add a Microsoft Mouse to your system. Simply plug the mouse into the Microsoft InPort connector and you're ready for Windows or any other software that supports the mouse.

Microsoft MACH 10. It gives your PC the speed to take maximum advantage of Microsoft Windows.

System Requirements

- IBM PC, IBM PC/XT, IBM Portable PC, COMPAQ® Portable, COMPAQ Portable Plus, or Leading Edge® Model "D"™
- DOS 2.0 or higher
- One double-sided disk drive
- Full-length auxiliary card slot

Note: Supports pointing devices compatible with the Microsoft InPort device interface.



XENIX® version of Microsoft Multiplan. The spreadsheet for multi-user systems.

Now there's a sophisticated, powerful spreadsheet for XENIX V/286 systems. Microsoft Multiplan. The latest version of the program that's been selected by more than a million people around the world for use on more than a hundred different computers.

Our XENIX version of Multiplan is almost identical to its MS-DOS cousin. It includes file locking and file access permissions, and supports multiple simultaneous users from an unmodified IBM PC AT.

Microsoft Multiplan gives you 4095 rows by 255 columns of working area. An intuitive, easy-to-use interface. Macros that let you reduce lengthy command sequences to a single key-stroke. And more.

Month 1		Month 2		Month 3		Totals	
\$25,120.60	\$28,962.40	\$35,000.00	\$40,000.00	\$44,518.20	\$44,518.20	\$44,518.20	\$133,000.00
\$350.00	\$350.00	\$350.00	\$350.00	\$350.00	\$350.00	\$350.00	\$1,050.00
\$175.00	\$175.00	\$175.00	\$175.00	\$175.00	\$175.00	\$175.00	\$525.00
\$97.50	\$97.50	\$97.50	\$97.50	\$97.50	\$97.50	\$97.50	\$292.50
\$21.40	\$21.40	\$21.40	\$21.40	\$21.40	\$21.40	\$21.40	\$64.20
\$0.00	\$0.00	\$0.00	\$0.00	\$0.00	\$0.00	\$0.00	\$0.00
\$2,200.00	\$2,200.00	\$2,200.00	\$2,200.00	\$2,200.00	\$2,200.00	\$2,200.00	\$6,600.00
\$590.00	\$590.00	\$590.00	\$590.00	\$590.00	\$590.00	\$590.00	\$1,770.00
\$40.00	\$40.00	\$40.00	\$40.00	\$40.00	\$40.00	\$40.00	\$120.00
\$2,000.00	\$2,000.00	\$2,000.00	\$2,000.00	\$2,000.00	\$2,000.00	\$2,000.00	\$6,000.00
\$550.00	\$550.00	\$550.00	\$550.00	\$550.00	\$550.00	\$550.00	\$1,650.00
\$1,427.40	\$1,427.40	\$1,427.40	\$1,427.40	\$1,427.40	\$1,427.40	\$1,427.40	\$4,282.20
\$1,427.40	\$1,427.40	\$1,427.40	\$1,427.40	\$1,427.40	\$1,427.40	\$1,427.40	\$4,282.20
\$975.00	\$975.00	\$975.00	\$975.00	\$975.00	\$975.00	\$975.00	\$2,925.00
\$975.00	\$975.00	\$975.00	\$975.00	\$975.00	\$975.00	\$975.00	\$2,925.00
\$350.00	\$350.00	\$350.00	\$350.00	\$350.00	\$350.00	\$350.00	\$1,050.00
\$1,000.00	\$1,000.00	\$1,000.00	\$1,000.00	\$1,000.00	\$1,000.00	\$1,000.00	\$3,000.00
\$230.00	\$230.00	\$230.00	\$230.00	\$230.00	\$230.00	\$230.00	\$690.00
\$1,421.40	\$1,421.40	\$1,421.40	\$1,421.40	\$1,421.40	\$1,421.40	\$1,421.40	\$4,264.20
\$975.00	\$975.00	\$975.00	\$975.00	\$975.00	\$975.00	\$975.00	\$2,925.00
\$155.00	\$155.00	\$155.00	\$155.00	\$155.00	\$155.00	\$155.00	\$465.00
\$350.00	\$350.00	\$350.00	\$350.00	\$350.00	\$350.00	\$350.00	\$1,050.00
\$57,602.20	\$57,602.20	\$57,602.20	\$57,602.20	\$57,602.20	\$57,602.20	\$57,602.20	\$172,806.60
\$20,037.40	\$20,037.40	\$20,037.40	\$20,037.40	\$20,037.40	\$20,037.40	\$20,037.40	\$60,112.20
\$38,450.80	\$38,450.80	\$38,450.80	\$38,450.80	\$38,450.80	\$38,450.80	\$38,450.80	\$115,353.60
\$44,518.20	\$44,518.20	\$44,518.20	\$44,518.20	\$44,518.20	\$44,518.20	\$44,518.20	\$133,554.60
\$25,120.60	\$25,120.60	\$25,120.60	\$25,120.60	\$25,120.60	\$25,120.60	\$25,120.60	\$75,361.80

In fact, it gives you all of the features of the MS-DOS version of Multiplan except mouse and color support. And, since it reads SYLK files, you can use existing Multiplan files.

To find out more, take a look at the description of the MS-DOS version of Multiplan on page 6. Then visit a Microsoft dealer for a demonstration.

System Requirements

- A computer running the XENIX operating system
- 640K available user memory
- XENIX 286 Version 5.0 or IBM PC XENIX Version 2.00
- One double-sided disk drive

Microsoft Flight Simulator. Take to the air...without leaving home.

Climb into the cockpit of a Cessna 182 and get ready for almost anything in this exciting, highly realistic flight simulation program.

Sitting in the pilot's seat, you'll see both an out-the-window view and a highly accurate FAA-standard instrumentation panel. Create up to 30 flight modes. Take off and land at more than 80 airports. Alter the time of day, weather, or season to simulate the same conditions pilots face.

You can start in easy mode; grow to reality mode as your skills increase. And you can even fly into battle and match wits with enemy fighters in World War I Ace mode.

Microsoft Flight Simulator. Fun's never been so challenging, or so realistic.



System Requirements

- IBM Personal Computer or compatible
- 128K memory
- DOS 1.0 or higher
- One internal disk drive
- IBM Color/Graphics Monitor Adapter or Hercules Graphics Card

Optional

- Microsoft Mouse (bus, serial, or InPort version)
- Joysticks (require IBM Game Control Adapter)

Note: Also available in 3 1/2" disk format.

Learning DOS. Your own personal computer instructor.

Now you can learn DOS from the people who know it best—Microsoft. We created DOS, and now we've come up with an easy way for you to learn it.

Learning DOS tells you everything you need to know to master your computer's operating system. And all of this valuable information is right where you need it—inside your computer.

Learning DOS starts you off with a series of lessons that takes you from absolute unfamiliarity to complete control of everyday DOS commands. Which gets you up to speed quickly, even if you've never used a computer before.

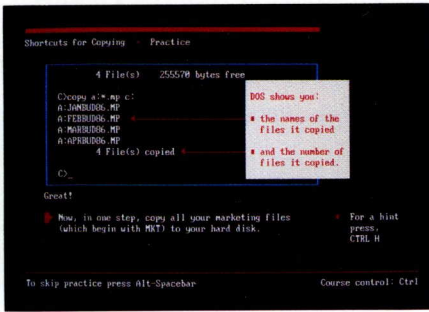
Learning DOS teaches you how to list a directory. Copy and delete files. Back up disks. How to create your own AUTOEXEC.BAT and CONFIG.SYS files. There are even special lessons for hard-disk users.

Then, as you use your computer, Learning DOS has on-line DOS Quick Reference that's always ready to give you instant help with any DOS command whenever you need it.

Learning DOS. It's like having your own consultant with you whenever you use your computer. Only a lot more convenient.

System Requirements

- IBM Personal Computers or compatibles
- DOS 2.0 or higher
- One double-sided disk drive or one drive and a hard disk



Microsoft Press.
Read all about it.

Whether you're just getting started or looking for a way to get more power from your computer, these books from Microsoft Press offer practical advice. They provide detailed examples that show exactly how you can put your computer to the best use.

Available wherever books or software are sold. Or order them directly from Microsoft, using the attached Microsoft Press order form. You can also order Learning DOS, our computerized tutorial that teaches you how to use the PC operating system.

Microsoft Press Order Form

Please print:

Name

Address (no P.O. boxes, please)

City

State

Zip

- Check
 MasterCard
 American Express

- VISA
 Money Order

Credit Card No.

Expiration Date

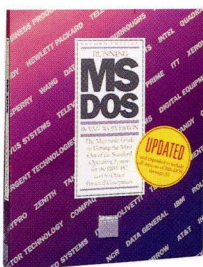
Signature

To order, send this form along with your payment or credit card information to:

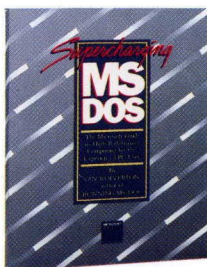
Microsoft Press
Post Office Box 1532
Hagerstown, MD 21742

Or call toll-free: 1-800-638-3030
In Maryland call collect: 824-7300
Monday through Friday, 8:15 a.m. to 4:15 a.m. (EST)

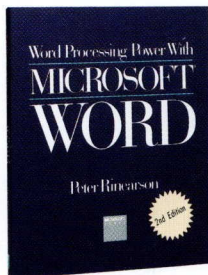
Please allow 4 weeks for delivery. This offer good only in USA.



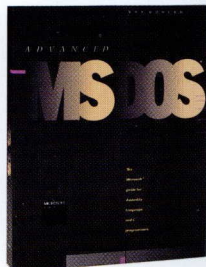
Running MS-DOS, 2d ed.
Van Wolverton
The latest edition of this handy source book for the MS-DOS operating system. It tells you how to use the latest versions of MS-DOS (through Version 3.1).



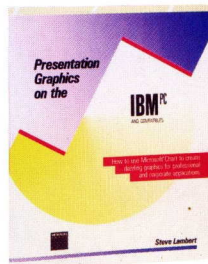
Supercharging MS-DOS
Van Wolverton
Learn how to customize the behavior and appearance of your computer with a comprehensive guide by the author of *Running MS-DOS*. Filled with tips and techniques.



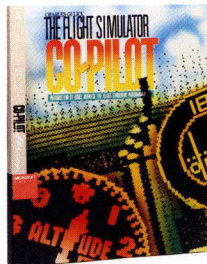
Word Processing Power with Microsoft Word, 2d ed.
Peter Rinearson
The only book to address all features of all versions of Microsoft Word, this new edition offers an in-depth look at scores of timesaving, practical strategies.



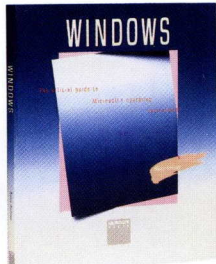
Advanced MS-DOS
Ray Duncan
High-level MS-DOS information packed into a book for advanced assembly-language and C programmers. Covers such topics as MS-DOS disk internals, EXEC functions, and installable device drivers.



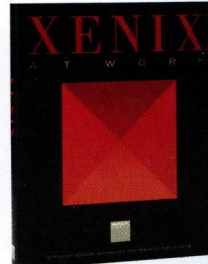
Presentation Graphics on the IBM PC
Steve Lambert
This guide helps Microsoft Chart users fully exploit the graphics power of their software. It shows how to prepare dazzling graphics for corporate and professional applications.



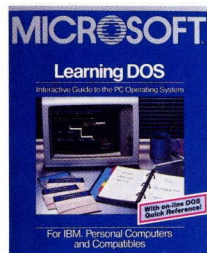
The Flight Simulator Co-Pilot
Charles Gulick
Scores of adventures for Flight Simulator pilots. Using the simulator's airports as training bases, you'll get step-by-step flight instruction, with precision piloting techniques.



Windows
Nancy Andrews
All the details on how to get the most out of Microsoft Windows. Things like how to run non-Windows applications. Ways to customize Windows. And how to use a RAM disk to optimize Windows performance.



XENIX at Work
JoAnne Woodcock and Michael Halvorson, eds.
Complete, readable guide to getting the most from this multi-user, multi-tasking operating system. Includes information on managing directories and data files and using the vi editor.



Learning DOS
The computer-based DOS training program from the people who know DOS best. Includes comprehensive lessons for the new user, plus on-line Quick Reference for the more experienced user.



- Running MS-DOS, 2d ed.*
Van Wolverton \$21.95
- Supercharging MS-DOS*
Van Wolverton \$18.95
- Word Processing Power with Microsoft Word, 2d ed.*
Peter Rinearson \$19.95
- Advanced MS-DOS*
Ray Duncan \$22.95
- Presentation Graphics on the IBM PC*
Steve Lambert \$19.95
- The Flight Simulator Co-Pilot*
Charles Gulick \$ 9.95
- Windows*
Nancy Andrews \$17.95
- XENIX at Work*
JoAnne Woodcock and Michael Halvorson, eds. \$21.95
- Learning DOS* \$49.95

Please send me the items I've checked above.

Combined price: \$ _____

Postage & handling:

- One item \$2.50
- Two items \$3.25
- Three items \$4.00
- Four items \$4.75
- Each additional item \$.75

\$ _____

Sales tax:

- California residents add 6.5%
- Washington State residents add 8.1%
- Massachusetts residents add 5.0%
- Maryland residents add 5.0%

\$ _____

TOTAL: \$ _____



The High Performance Software

Microsoft Corporation
16011 NE 36th Way
Box 97017
Redmond, WA 98073-9717

To find out more...
about any Microsoft product, visit your Microsoft dealer
for a demonstration.

Microsoft. Our business is making your business better.

© Copyright 1986. Microsoft Corporation. All rights reserved. Printed in USA.

Please note that the availability and specifications of products described here are
subject to change without notice.

Microsoft, the Microsoft logo, MS-DOS, Multiplan, and XENIX are registered
trademarks and InPort and MACH 10 are trademarks of Microsoft Corporation.

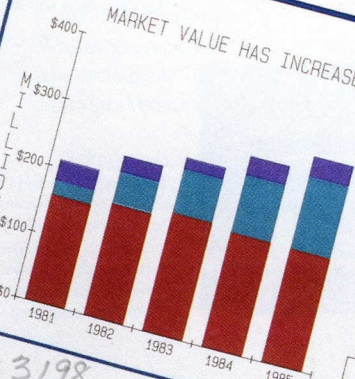
Paintbrush is a registered trademark of ZSoft Corporation.
Show Partner is a trademark of Brightbill-Roberts and Company, Ltd.
Primavera Project Planner is a registered trademark of Primavera Systems, Inc.
muMATH is a trademark of Soft Warehouse, Inc.

1086 Part No. 000-014-054

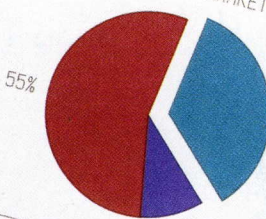


REAL ESTATE MARKET ANALYSIS

MARKET VALUE HAS INCREASED



LAND IS 35% OF MARKET



102683198