

Ribbon Cable Systems

Ribbon Cable Connectors

1.27mm (.050") Pitch Connectors—Picoflex™ PF-50	
IDT Connectors	H-2 to H-3
Headers	H-4 to H-8
Custom Cable Harnesses	H-9 to H-12
Connectors for 1.27mm (.050") Pitch Ribbon Cable—QF-50™	
Receptacles	H-14 to H-15 and H-17
Strain Reliefs	H-16 and H-18
Shrouded Headers	H-19 to H-26
Transition Connectors	H-27
2.54mm (.100") Pitch Connectors—SL™	H-28

Flat Ribbon Cable

Electrical Specifications	H-29
Round Conductor Flat Cable	
1.00mm (.039") Pitch	H-30
1.27mm (.050") Pitch	H-31 to H-33
1.50mm (.059") Pitch	H-34
2.00mm (.079") Pitch	H-35 to H-36
2.50mm (.098") Pitch	H-37
2.54mm (.100") Pitch	H-38 to H-41
3.96mm (.156") Pitch	H-42
Ribbon Cable Jumpers	
Standard	H-43 to H-44
Custom	H-45
Ribbon Cable Assemblies	H-46

Application Tooling	H-47 to H-54
--------------------------------------	--------------



For more information, please see the last page of the catalog for the location nearest you or contact:

FEATURES AND SPECIFICATIONS

Features and Benefits

- 1-piece housing assures precise positioning of cable
- Molded-in polarization
- 4 points of contact with ribbon cable
- Preloaded contacts
- Accepts 28 or 26 AWG (7 strand) ribbon cable
- Tape option for high-speed termination, contact Molex for part numbers

Reference Information

Product Specification: PS-99020-0011
 Packaging: Bag (tape optional)
 Tooling Information: See end of section
 UL File No.: E29179
 CSA File No.: LR19980-181
 Mates With: 90325, 90715, 90779, 90800 and 90814
 Use Molex Cable: 6800, 8863 and 40158
 Designed In: Millimeters

Electrical

Voltage: 250V
 Current: 1.2A
 Contact Resistance: 15mΩ max.
 Dielectric Withstanding Voltage: 750V rms
 Insulation Resistance: 1000 MΩ min.

Mechanical

Mating Force: 1.7N Tin/Lead and 1.1N Gold
 Unmating Force: 0.25N Tin/Lead and 0.25N Gold
 Durability: 30 cycles max. Tin/Lead and 100 cycles max. Gold (using extraction tool)

Physical

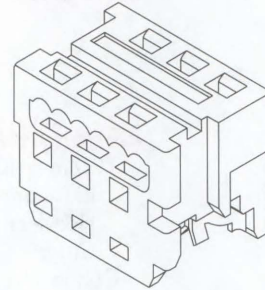
Housing: White polyester, UL 94V-0
 Contact: Phosphor Bronze Alloy
 Plating: See Table
 Operating Temperature: -40 to +105°C
 Cable Accommodation: 26 and 28 AWG stranded



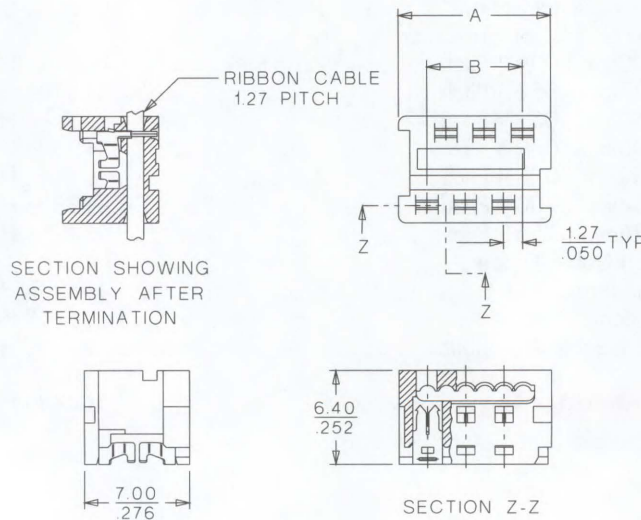
**1.27mm (.050") Pitch
 Picoflex™ PF-50
 Connector**

90327

Low Profile, IDT



CATALOG DRAWING (FOR REFERENCE ONLY)



ORDERING INFORMATION AND DIMENSIONS

Circuits	Order No.		Dimension	
	Plating 1	Plating 2	A	B
4	90327-0304	90327-3304	7.59 (.299)	3.81 (.150)
6	90327-0306	90327-3306	10.13 (.399)	6.35 (.250)
8	90327-0308	90327-3308	12.67 (.499)	8.89 (.350)
10	90327-0310	90327-3310	15.21 (.599)	11.43 (.450)
12	90327-0312	90327-3312	17.75 (.699)	13.97 (.550)
14	90327-0314	90327-3314	20.29 (.799)	16.51 (.650)
16	90327-0316	90327-3316	22.83 (.899)	19.05 (.750)
18	90327-0318	90327-3318	25.37 (.999)	21.59 (.850)
20	90327-0320	90327-3320	27.91 (1.099)	24.13 (.950)
26	90327-0326	90327-3326	35.53 (1.399)	31.75 (1.250)

Plating 1: 3-6µm (120-240µ") Tin/Lead
 Plating 2: 0.76µm (30µ") Select Gold

FEATURES AND SPECIFICATIONS

Features and Benefits

- For permanent wire-to-board connections
- Kinked solder tails for board retention during solder process
- Fits same board layout pattern as male header
- Height from board when soldered and terminated only 6.40mm (.252")
- 2 points of contact in IDT section
- Accepts 26 to 28 AWG, 7 strands, ribbon cable

Reference Information

Product Specification: PS-99020-0011
 Packaging: Tube (2 options)
 Tooling Information: See end of section
 Designed In: Millimeters

Electrical

Voltage: 250V
 Current: 1.2A
 Contact Resistance: 15mΩ max.
 Dielectric Withstanding Voltage: 750V
 Insulation Resistance: 1000 MΩ min.

Physical

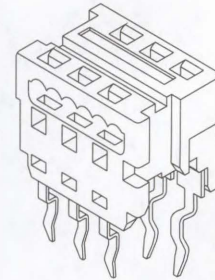
Housing: White polyester, UL 94V-0
 Contact: Phosphor Bronze Alloy
 Plating: Tin/Lead 1-3μm (.040-.118μ") over Nickel
 Operating Temperature: -40 to +105°C



1.27mm (.050") Pitch Picoflex™ PF-50 Connector

90584

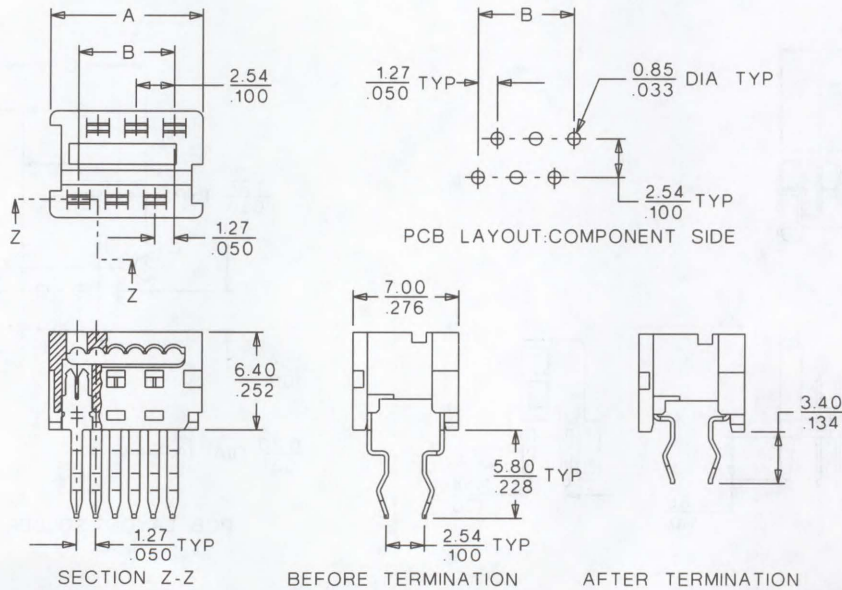
Low Profile, IDT Board-In



Ribbon Cable Systems



CATALOG DRAWING (FOR REFERENCE ONLY)



ORDERING INFORMATION AND DIMENSIONS

Circuits	Order No.		Dimension	
	Individual Tube	Stacked Tube	A	B
4	90584-1304	90584-2304	7.59 (.299)	3.81 (.150)
6	90584-1306	90584-2306	10.13 (.399)	6.35 (.250)
8	90584-1308	90584-2308	12.67 (.499)	8.89 (.350)
10	90584-1310	90584-2310	15.21 (.599)	11.43 (.450)
12	90584-1312	90584-2312	17.75 (.699)	13.97 (.550)
14	90584-1314	90584-2314	20.29 (.799)	16.51 (.650)
16	90584-1316	90584-2316	22.83 (.899)	19.05 (.750)
18	90584-1318	90584-2318	25.37 (.999)	21.59 (.850)
20	90584-1320	90584-2320	27.91 (1.099)	24.13 (.950)
26	90584-1326	90584-2326	35.53 (1.399)	31.75 (1.250)

Note: Stacked tube is a group of 7 individual tubes in a stack

FEATURES AND SPECIFICATIONS

Features and Benefits

- Polarizing side posts and PCB pegs
- Stamped contacts with in-line, flat blades
- 2 points of contact with female terminal
- Rigid, staggered solder tails
- Friction lock
- Tube option packaging for robotic delivery, contact Molex for part numbers

Reference Information

Product Specification: PS-99020-0011
 Packaging: Bag or tube
 UL File No.: E29179
 CSA File No.: LR19980-181
 Mates With: 90327
 Designed In: Millimeters

Electrical

Voltage: 250V
 Current: 1.2A
 Contact Resistance: 15mΩ max.
 Dielectric Withstanding Voltage: 750V rms
 Insulation Resistance: 1000 MΩ min.

Mechanical

Contact Retention to Housing: 7N
 Mating Force: 1.7N Tin/Lead and 1.1N Gold
 Unmating Force: 0.25N Tin/Lead and 0.25N Gold
 Durability: 30 cycles max. Tin/Lead and 100 cycles max. Gold (using extraction tool)

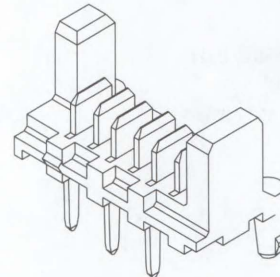
Physical

Housing: Black, 15% glass-filled polyester, UL 94V-0
 Contact: Brass
 Plating: See Table
 Operating Temperature: -40 to +105°C

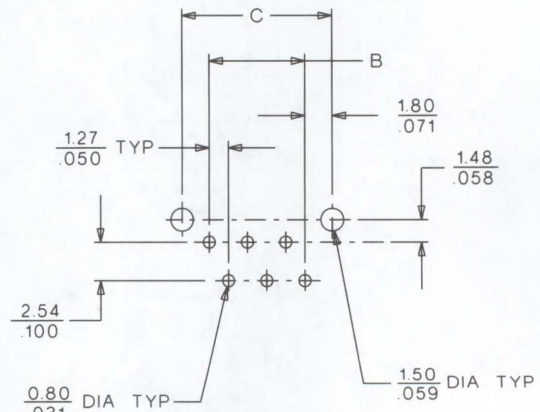
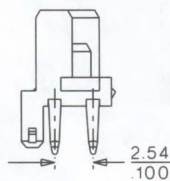
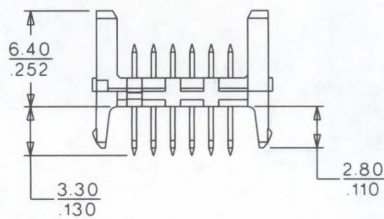
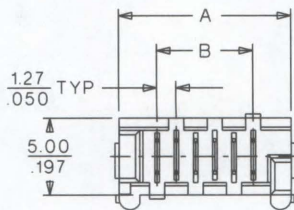
molex® 1.27mm (.050") Pitch Picoflex™ PF-50 Header

90325

Low Profile



CATALOG DRAWING (FOR REFERENCE ONLY)



PCB LAYOUT: SOLDER SIDE

ORDERING INFORMATION AND DIMENSIONS

Circuits	Order No.		Dimension		
	Plating 1	Plating 2	A	B	C
4	90325-0004	90325-3004	8.86 (.349)	3.81 (.150)	7.41 (.292)
6	90325-0006	90325-3006	11.40 (.449)	6.35 (.250)	9.95 (.392)
8	90325-0008	90325-3008	13.94 (.549)	8.89 (.350)	12.49 (.492)
10	90325-0010	90325-3010	16.48 (.649)	11.43 (.450)	15.03 (.592)
12	90325-0012	90325-3012	19.02 (.749)	13.97 (.550)	17.57 (.692)
14	90325-0014	90325-3014	21.56 (.849)	16.51 (.650)	20.11 (.792)
16	90325-0016	90325-3016	24.10 (.949)	19.05 (.750)	22.65 (.892)
18	90325-0018	90325-3018	26.64 (1.049)	21.59 (.850)	25.19 (.992)
20	90325-0020	90325-3020	29.18 (1.149)	24.13 (.950)	27.73 (1.092)
26	90325-0026	90325-3026	36.80 (1.448)	31.75 (1.249)	35.35 (1.391)

Plating 1: 4-6μm (160-240μ") Tin/Lead
 Plating 2: 0.76μm (30μ") Select Gold

FEATURES AND SPECIFICATIONS

Features and Benefits

- Polarizing side posts and PCB pegs
- Stamped SMT contacts with in-line, flat blades
- 2 points of contact with female terminal
- Rigid, staggered SMT solder tails
- Friction lock
- Optional retention bulb between circuits 12 to 26 only (contact Molex)

Reference Information

Product Specification: PS-99020-0011
 Packaging: Tube or blister pack (contact Molex)
 Mates With: 90327
 Designed In: Millimeters

Electrical

Voltage: 250V
 Current: 1.2A
 Contact Resistance: 15mΩ max.
 Dielectric Withstanding Voltage: 750V rms
 Insulation Resistance: 1000 MΩ min.

Mechanical

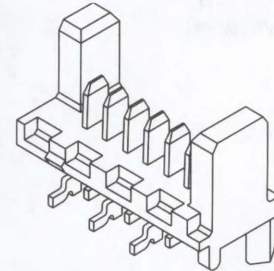
Contact Retention to Housing: 7N
 Mating Force: 1.7N Tin/Lead and 1.1N Gold
 Unmating Force: 0.25N Tin/Lead and 0.25N Gold
 Durability: 30 cycles max. Tin/Lead and 100 cycles max. Gold (using extraction tool)

Physical

Housing: Natural, 30% glass-filled nylon, UL 94V-0
 Contact: Brass
 Plating: See Table
 Operating Temperature: -40 to +105°C

molex® 1.27mm (.050") Pitch Picoflex™ PF-50 Header

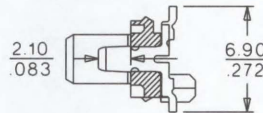
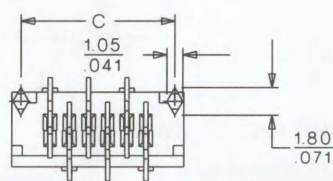
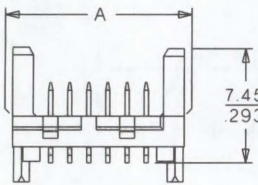
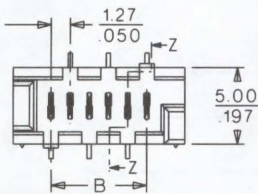
90814 SMT



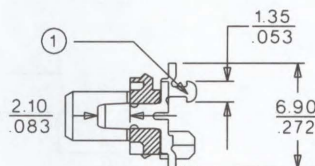
Ribbon Cable Systems



CATALOG DRAWING (FOR REFERENCE ONLY)



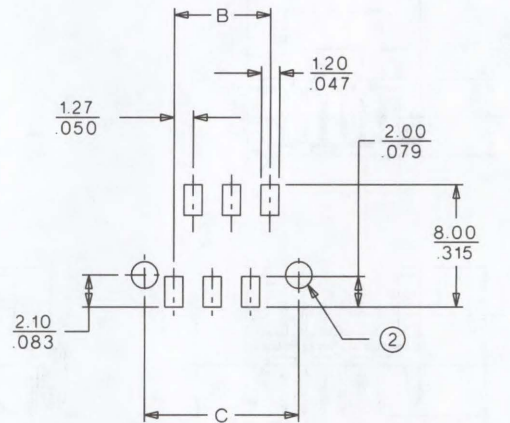
SECTION Z-Z



SECTION Z-Z WITH
 RETENTION BULBS

① RETENTION BULBS OPTIONAL
 ON 12-26 CIRCUITS

② 1.75 DIA. TYPICAL FOR 90814-X0XX
 2.00 DIA. TYPICAL FOR 90814-X2XX



PCB LAYOUT: SURFACE MOUNT SIDE
 RECOMMENDED PCB THICKNESS: 1.60/.063

ORDERING INFORMATION AND DIMENSIONS

Circuits	Order No.				Dimension		
	Tube Pack		Blister Pack		A	B	C
	Plating 1	Plating 2	Plating 1	Plating 2			
4	90814-0004	90814-3004	90814-0204	90814-3204	8.86 (.349)	3.81 (.150)	7.66 (.302)
6	90814-0006	90814-3006	90814-0206	90814-3206	11.40 (.449)	6.35 (.250)	10.20 (.402)
8	90814-0008	90814-3008	90814-0208	90814-3208	13.94 (.549)	8.89 (.350)	12.74 (.502)
10	90814-0010	90814-3010	90814-0210	90814-3210	16.48 (.649)	11.43 (.450)	15.28 (.602)
12	90814-0012	90814-3012	90814-0212	90814-3212	19.02 (.749)	13.97 (.550)	17.82 (.702)
14	90814-0014	90814-3014	90814-0214	90814-3214	21.56 (.849)	16.51 (.650)	20.36 (.802)
16	90814-0016	90814-3016	90814-0216	90814-3216	24.10 (.949)	19.05 (.750)	22.90 (.902)
18	90814-0018	90814-3018	90814-0218	90814-3218	26.64 (1.049)	21.59 (.850)	25.44 (1.002)
20	90814-0020	90814-3020	90814-0220	90814-3220	29.18 (1.149)	24.13 (.950)	27.98 (1.102)
26	90814-0026	90814-3026	90814-0226	90814-3226	36.80 (1.449)	31.75 (1.250)	35.60 (1.402)

Plating 1: Tin/Lead 3-5µm (120-200µ")
 Plating 2: Select Gold .76µm (30µ")

FEATURES AND SPECIFICATIONS

Features and Benefits

- Polarizing side posts and PCB pegs
- Stamped contacts with in-line, flat blades
- 2 points of contact with female terminal
- Rigid, staggered solder tails
- Friction Lock
- High-temperature Surface Mount Compatible housing

Reference Information

Product Specification: PS-99020-0011
 Packaging: Bag or tube (contact Molex)
 Mates With: 90327
 Designed In: Millimeters

Electrical

Voltage: 250V
 Current: 1.2A
 Contact Resistance: 15mΩ max.
 Dielectric Withstanding Voltage: 750V rms
 Insulation Resistance: 1000 MΩ min.

Mechanical

Contact Retention to Housing: 7N
 Mating Force: 1.7N Tin/Lead and 1.1N Gold
 Unmating Force: 0.25N Tin/Lead and 0.25N Gold
 Durability: 30 cycles max. Tin/Lead and 100 cycles max. Gold
 (using extraction tool)

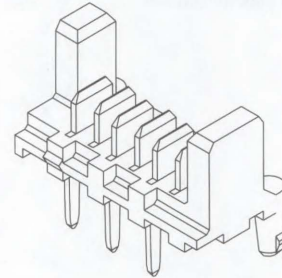
Physical

Housing: Natural, 30% glass-filled nylon, UL 94V-0
 Contact: Brass
 Plating: See Table
 Operating Temperature: -40 to +105°C

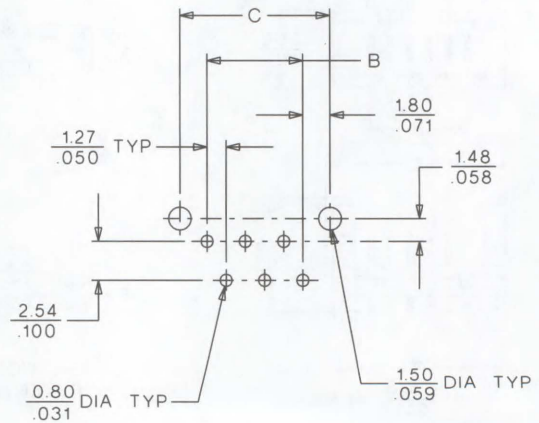
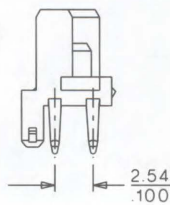
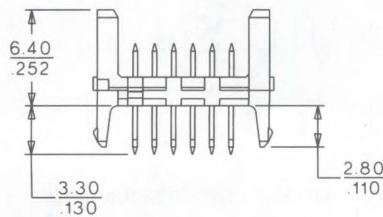
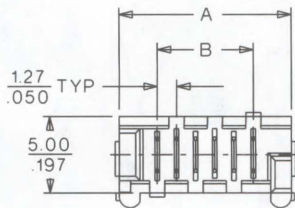
**molex® 1.27mm (.050") Pitch
 Picoflex™ PF-50
 Header**

90779

**Low Profile
 High Temperature**



CATALOG DRAWING (FOR REFERENCE ONLY)



PCB LAYOUT: SOLDER SIDE

ORDERING INFORMATION AND DIMENSIONS

Circuits	Order No.		Dimension		
	Plating 1	Plating 2	A	B	C
4	90779-0001	90779-3001	8.86 (.349)	3.81 (.150)	7.41 (.292)
6	90779-0002	90779-3002	11.40 (.449)	6.35 (.250)	9.95 (.392)
8	90779-0003	90779-3003	13.94 (.549)	8.89 (.350)	12.49 (.492)
10	90779-0004	90779-3004	16.48 (.649)	11.43 (.450)	15.03 (.592)
12	90779-0005	90779-3005	19.02 (.749)	13.97 (.550)	17.57 (.692)
14	90779-0006	90779-3006	21.56 (.849)	16.51 (.650)	20.11 (.792)
16	90779-0007	90779-3007	24.10 (.949)	19.05 (.750)	22.65 (.892)
18	90779-0008	90779-3008	26.64 (1.049)	21.59 (.850)	25.19 (.992)
20	90779-0010	90779-3010	29.18 (1.149)	24.13 (.950)	27.73 (1.092)

Plating 1: Tin/Lead 4-6µm (160-240µ")
 Plating 2: Select Gold .76µm (30µ")
 Contact Molex for tube part numbers

FEATURES AND SPECIFICATIONS

Features and Benefits

- Polarizing side posts
- Optional polarizing peg for PCB orientation
- 2 points of contact with female terminal
- Kinked solder tails for PCB retention
- Friction lock
- Stamped contacts with in-line, flat blades

Reference Information

Product Specification: PS-99020-0011
 Packaging: Bag or tube (contact Molex)
 Mates With: 90327
 Designed In: Millimeters

Electrical

Voltage: 250V
 Current: 1.2A
 Contact Resistance: 15mΩ max.
 Dielectric Withstanding Voltage: 750V
 Insulation Resistance: 1000 MΩ min.

Mechanical

Contact Retention to Housing: 7N min.
 Mating Force: 1.7N
 Unmating Force: 0.25N
 Durability: 30 cycles max.

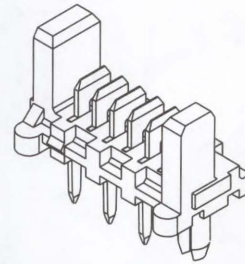
Physical

Housing: Black polyester, UL 94V-0
 Contact: Brass
 Plating: 3-6μ" Tin/Lead
 Operating Temperature: -40 to +105°C

molex® 1.27mm (.050") Pitch Picoflex™ PF-50 Low Profile Header

90715

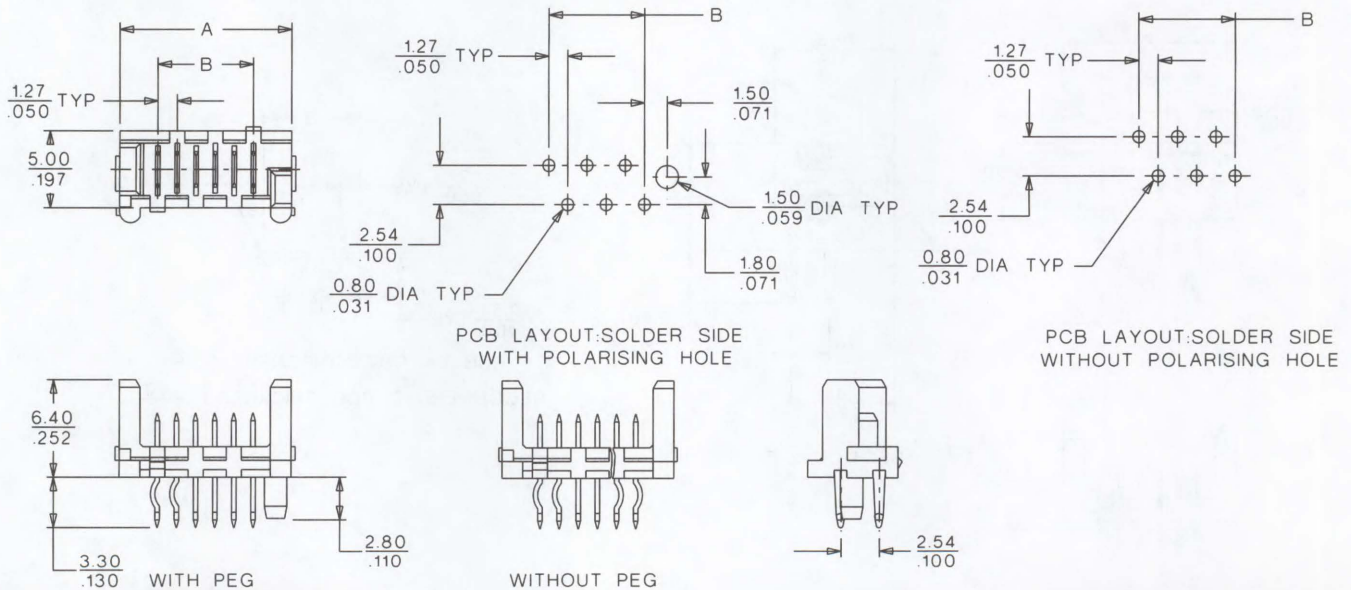
Vertical, Kinked PC Tails Polarizing Peg



Ribbon Cable Systems

H

CATALOG DRAWING (FOR REFERENCE ONLY)



ORDERING INFORMATION AND DIMENSIONS

Circuits	Order No.		Dimension	
	With PCB Peg	Without PCB Peg	A	B
4	90715-0008	90715-0007	8.86 (.349)	3.81 (.150)
6	90715-0005	90715-0003	11.40 (.449)	6.35 (.250)
8	90715-0004	90715-0001	13.94 (.549)	8.89 (.350)
10	90715-0002	90715-0009	16.48 (.649)	11.43 (.450)
12	90715-0011	90715-0010	19.02 (.749)	13.97 (.550)
14	90715-0013	90715-0012	21.56 (.849)	16.51 (.650)
16	90715-0006	90715-0014	24.10 (.949)	19.05 (.750)
18	90715-0016	90715-0015	26.64 (1.049)	21.59 (.850)
20	90715-0018	90715-0017	29.18 (1.149)	24.13 (.950)
26	90715-0020	90715-0019	36.80 (1.448)	31.75 (1.249)

FEATURES AND SPECIFICATIONS

Features and Benefits

- Polarizing side posts
- Stamped contacts
- 2 points of contact with female terminal
- Kinked solder tails for board retention during solder process
- Friction lock

Reference Information

Packaging: Tube
 Tooling Information: See end of section
 Mates With: 90327
 Designed In: Millimeters

Electrical

Voltage: 250V
 Current: 1.2A
 Contact Resistance: 15mΩ max.
 Dielectric Withstanding Voltage: 750V
 Insulation Resistance: 1000 MΩ min.

Mechanical

Contact Retention to Housing: 7N
 Mating Force: 1.7N Tin/Lead
 Unmating Force: 0.25N Tin/Lead
 Durability: 30 cycles max. Tin/Lead (using extraction tool)

Physical

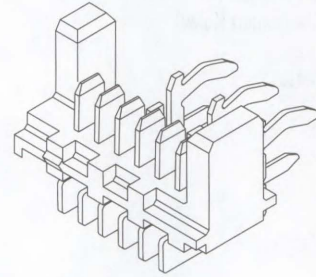
Housing: Black 15% glass-filled polyester, UL 94V-0
 Contact: Brass
 Plating: 3-5µm Tin/Lead over Nickel
 Operating Temperature: -40 to +105°C



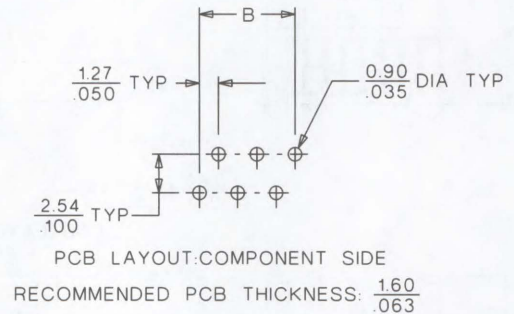
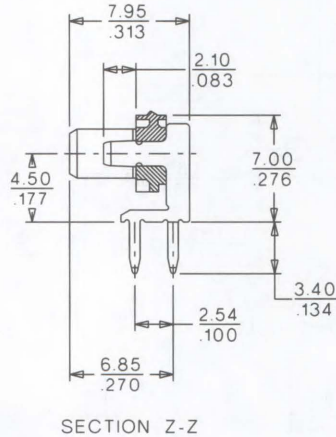
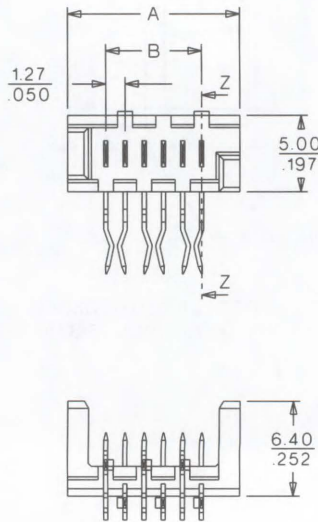
**1.27mm (.050") Pitch
 Picoflex™ PF-50
 Header**

90800

Right Angle, Low Profile



CATALOG DRAWING (FOR REFERENCE ONLY)



ORDERING INFORMATION AND DIMENSIONS

Circuits	Order No.	Dimension	
		A	B
4	90800-0004	8.86 (.349)	3.81 (.150)
6	90800-0006	11.40 (.449)	6.35 (.250)
8	90800-0008	13.94 (.549)	8.89 (.350)
10	90800-0010	16.48 (.649)	11.43 (.450)
12	90800-0012	19.02 (.749)	13.97 (.550)
14	90800-0014	21.56 (.849)	16.51 (.650)
16	90800-0016	24.10 (.949)	19.05 (.750)
18	90800-0018	26.64 (1.049)	21.59 (.850)
20	90800-0020	29.18 (1.149)	24.13 (.950)
26	90800-0026	36.80 (1.449)	31.75 (1.250)

FEATURES AND SPECIFICATIONS

Features and Benefits

- Cable assembly with two 90327 connectors
- Sizes 4 to 20 and 26 (see 90327)
- UL 2651, 28 AWG (7 strand) ribbon cable
- Lengths from 7 to 120cm

Reference Information

Packaging: Bag

Mates With: 90325, 90800, 90814, 90715 and 90779

Designed In: Millimeters

Electrical

Voltage: 250V

Current: 1.2A

Mechanical

Mating Force: 1.7N

Unmating Force: 0.25N

Durability: 30 cycles max.

Physical

Housing: 6/6 nylon, UL 94V-0

Contact: Phosphor Bronze Alloy

Plating: 3-6µ" Tin/Lead

Operating Temperature: -20 to +105°C

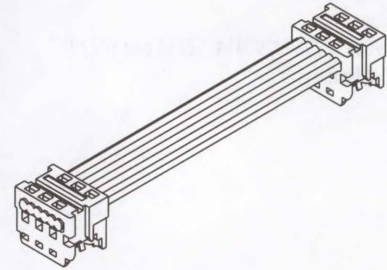
Insulation: Cable—Gray PVC

Wire Range: 28 AWG



1.27mm (.050") Pitch Picoflex™ PF-50 Custom Cable Harness

92315

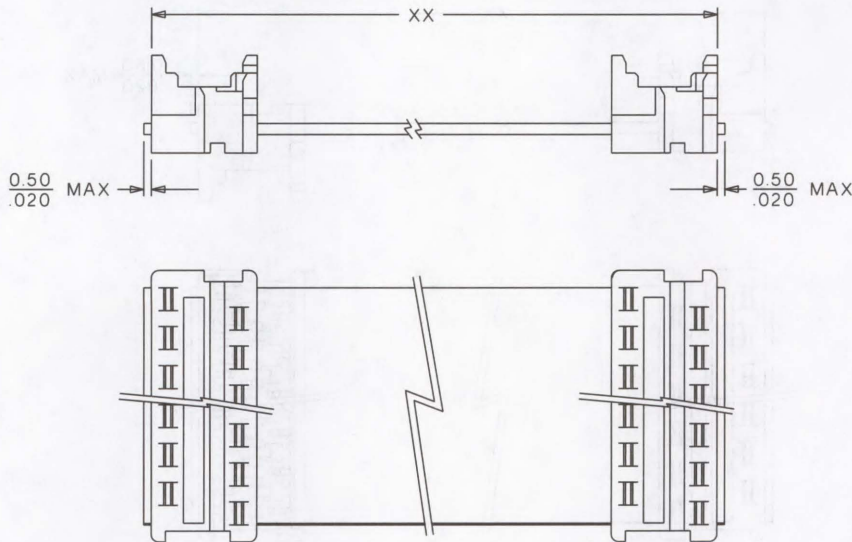


See 90327 and 6800 cable pages for more specifications

Ribbon Cable Systems

H

CATALOG DRAWING (FOR REFERENCE ONLY)



ORDERING INFORMATION AND DIMENSIONS

Circuits	Order No.
4	92315-04XX
6	92315-06XX
8	92315-08XX
10	92315-10XX
12	92315-12XX
14	92315-14XX
16	92315-16XX
18	92315-18XX
20	92315-20XX
26	92315-26XX

Length	XX
7-99cm	07-99
100cm	01
105cm	02
110cm	03
115cm	04
120cm	05

Replace XX with length in cm (min. 7cm, max. 120cm), see table
Example: 92315-0832 is a cable with two 90327-0308, 32cm long

FEATURES AND SPECIFICATIONS

Features and Benefits

- Cable assembly with two 90327, Z-style connectors
- Sizes 4 to 20 and 26 (see 90327)
- UL 2651, 28 AWG (7 strand) ribbon cable
- Lengths from 7 to 120cm

Reference Information

Packaging: Bag
 Mates With: 90325, 90800, 90814, 90715 and 90779
 Designed In: Millimeters

Electrical

Voltage: 250V
 Current: 1.2A

Mechanical

Mating Force: 1.7N
 Unmating Force: 0.25N
 Durability: 30 cycles max.

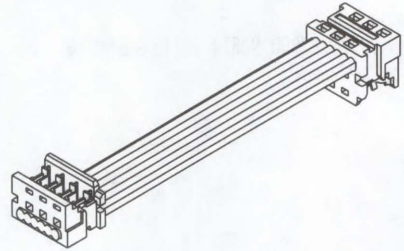
Physical

Housing: 6/6 nylon, UL 94V-0
 Contact: Phosphor Bronze Alloy
 Plating: 3-6µ" Tin/Lead
 Operating Temperature: -20 to +105°C
 Insulation: Cable—Gray PVC
 Wire Range: 28 AWG



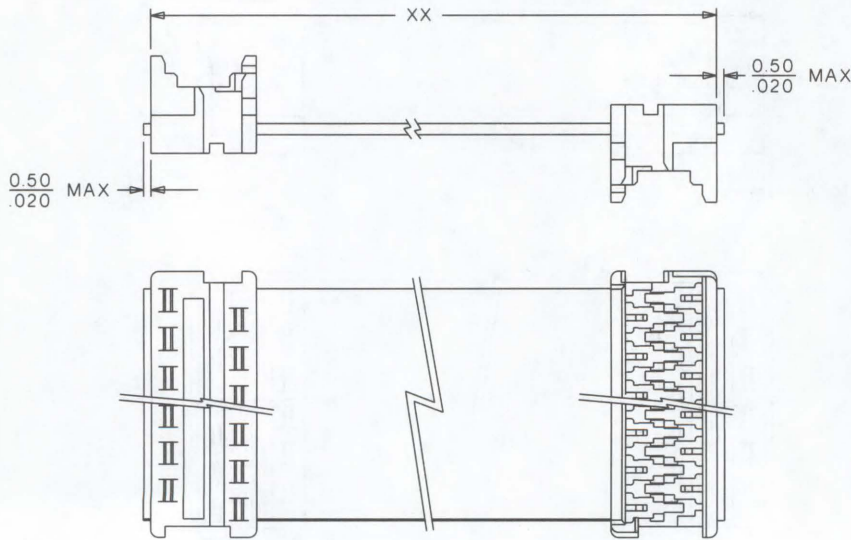
**1.27mm (.050") Pitch
 Picoflex™ PF-50
 Custom Cable Harness**

92317



See 90327 and 6800 cable pages for more specifications

CATALOG DRAWING (FOR REFERENCE ONLY)



ORDERING INFORMATION AND DIMENSIONS

Circuits	Order No.
4	92317-04XX
6	92317-06XX
8	92317-08XX
10	92317-10XX
12	92317-12XX
14	92317-14XX
16	92317-16XX
18	92317-18XX
20	92317-20XX
26	92317-26XX

Length	XX
7-99cm	07-99
100cm	01
105cm	02
110cm	03
115cm	04
120cm	05

Replace XX with length in cm (min. 7cm, max. 120cm), see table
 Example: 92317-0832 is a cable with two 90327-0308, 32cm long

FEATURES AND SPECIFICATIONS

Features and Benefits

- Cable assembly with 90327 and 90584, Z-style connectors
- Sizes 4 to 20 and 26 (see 90327 and 90584)
- UL 2651, 28 AWG (7 strand) ribbon cable
- Lengths from 7 to 120cm

Reference Information

Packaging: Bag

Mates With: 90325, 90800, 90814, 90715 and 90779

Designed In: Millimeters

Electrical

Voltage: 250V

Current: 1.2A

Mechanical

Mating Force: 1.7N

Unmating Force: 0.25N

Durability: 30 cycles max.

Physical

Housing: 6/6 nylon, UL 94V-0

Contact: Phosphor Bronze Alloy

Plating: 3–6µ" Tin/Lead

Operating Temperature: -20 to +105°C

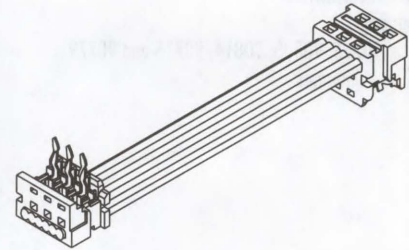
Insulation: Cable—Gray PVC

Wire Range: 28 AWG

See 90327, 90584 and 6800 cable pages for more specifications

molex® 1.27mm (.050") Pitch Picoflex™ PF-50 Custom Cable Harness

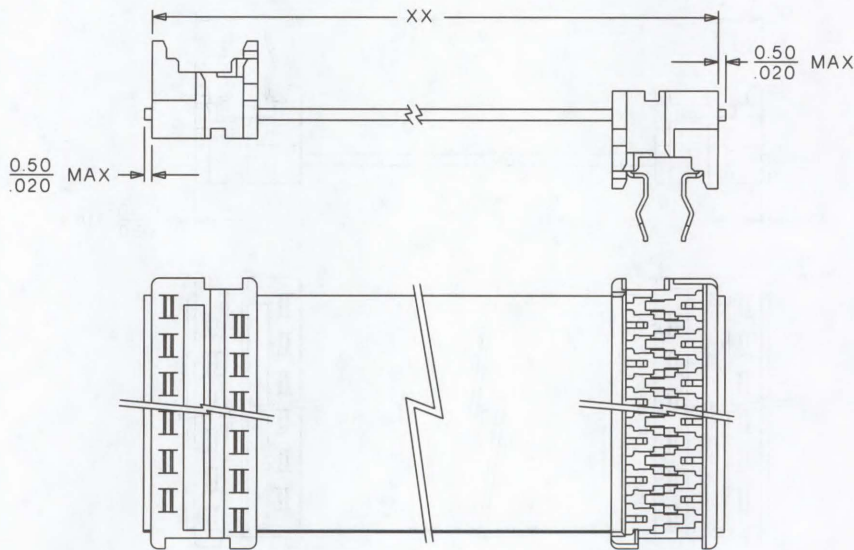
92318



Ribbon Cable Systems

H

CATALOG DRAWING (FOR REFERENCE ONLY)



ORDERING INFORMATION AND DIMENSIONS

Circuits	Order No.
4	92318-04XX
6	92318-06XX
8	92318-08XX
10	92318-10XX
12	92318-12XX
14	92318-14XX
16	92318-16XX
18	92318-18XX
20	92318-20XX
26	92318-26XX

Length	XX
7–99cm	07–99
100cm	01
105cm	02
110cm	03
115cm	04
120cm	05

Replace XX with length in cm (min. 7cm, max. 120cm), see table

Example: 92318-0832 is a cable with 90327-0308 and 90584-2308, 32cm long

FEATURES AND SPECIFICATIONS

Features and Benefits

- Cable assembly with 90327 and 90584 connectors
- Sizes 4 to 20 and 26 (see 90327 and 90584)
- UL 2651, 28 AWG (7 strand) ribbon cable
- Lengths from 7 to 120cm

Reference Information

Packaging: Bag
 Mates With: 90325, 90800, 90814, 90715 and 90779
 Designed In: Millimeters

Electrical

Voltage: 250V
 Current: 1.2A

Mechanical

Mating Force: 1.7N
 Unmating Force: 0.25N
 Durability: 30 cycles max.

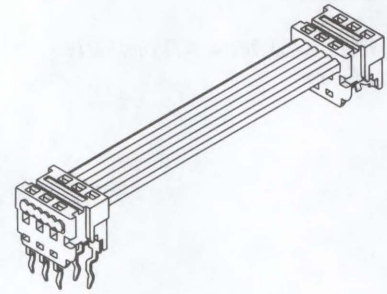
Physical

Housing: 6/6 nylon, UL 94V-0
 Contact: Phosphor Bronze Alloy
 Plating: 3-6µ" Tin/Lead
 Operating Temperature: -20 to +105°C
 Insulation: Cable—Gray PVC
 Wire Range: 28 AWG

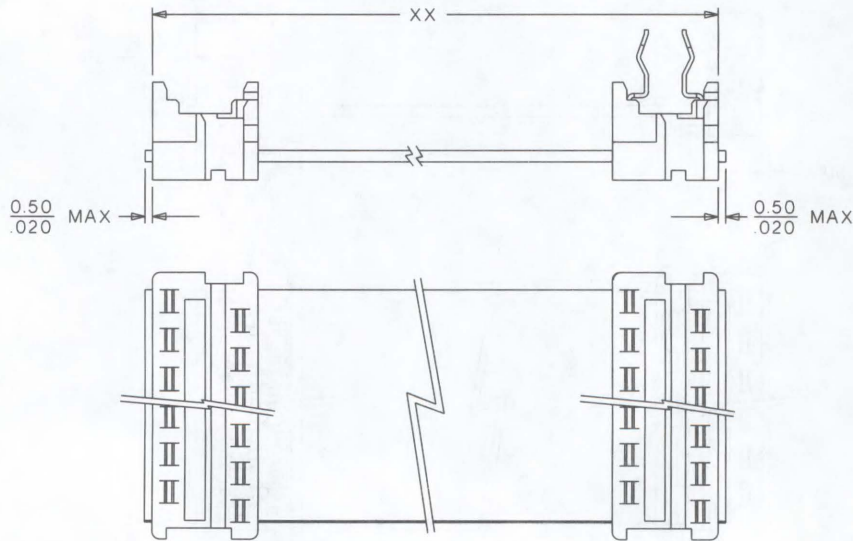
See 90327, 90584 and 6800 cable pages for more specifications

**molex® 1.27mm (.050") Pitch
 Picoflex™ PF-50
 Custom Cable Harness**

92316



CATALOG DRAWING (FOR REFERENCE ONLY)



ORDERING INFORMATION AND DIMENSIONS

Circuits	Order No.	Length	XX
4	92316-04XX	7-99cm	07-99
6	92316-06XX	100cm	01
8	92316-08XX	105cm	02
10	92316-10XX	110cm	03
12	92316-12XX	115cm	04
14	92316-14XX	120cm	05
16	92316-16XX		
18	92316-18XX		
20	92316-20XX		
26	92316-26XX		

Replace XX with length in cm (min. 7cm, max. 120cm), see table
 Example: 92316-0832 is a cable with 90327-0308 and 90584-2308, 32cm long



2.54mm (.100") Pitch QF 50™ Connector System For 1.27mm (.050") Pitch Ribbon Cable

Molex offers one of the widest ranges of connectors for 1.27mm (.050") ribbon cable on the market today. The QF 50 family features a variety of products conforming to industry-standard styles, such as DIN 41651, MIL-C-83503 keying, HE-10, etc. There is a choice of receptacle styles addressed to specific market requirements and a variety of designer-friendly headers.

Receptacles

Built to the highest quality standards, 2 distinct styles are offered:

- 5320 series, incorporating a dual-contact beam independently acknowledged to out-perform others on the market
- 90635 series, a lower-cost single-contact beam product, offering all the technical performance of its dual-beam counterpart, while also offering MIL keying

Headers

Available in 3 styles:

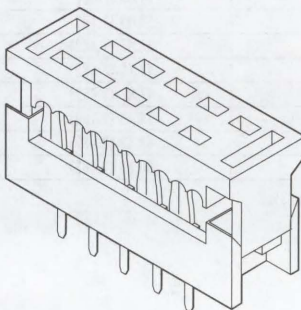
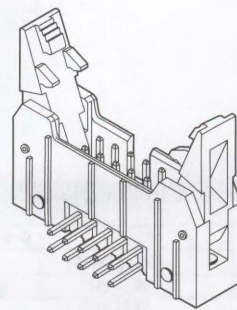
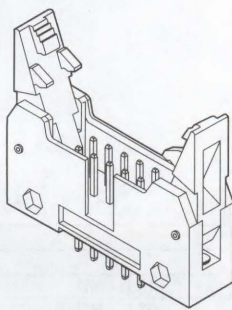
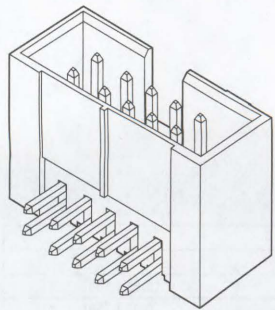
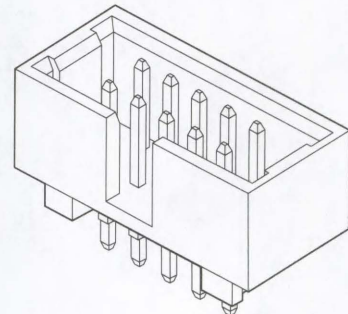
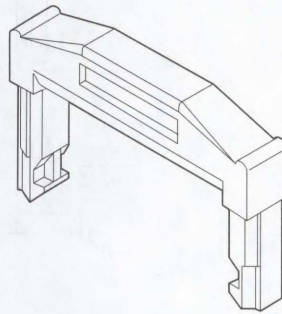
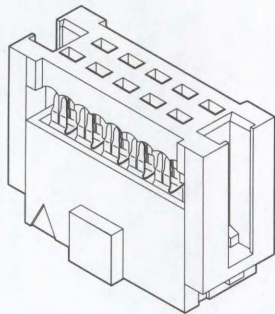
- Latch-eject style uniquely functioning with or without strain reliefs on receptacles and with ejectors that remain flush with the body, thus saving valuable PCB real estate
- Standard shrouded headers
- Low profile headers in industry-standard styles with various options, including variable board location/retention features and SMT-compatible insulators

Application Tooling

Molex has developed a choice of equipment that allows you to tailor your application tooling according to your volumes—from simple hand tools to high-volume automatic termination. Various packaging styles are available as options to optimize your applied cost. Please see end of section.

Cable

In line with the philosophy of offering our customers a complete interconnection solution, Molex also supplies the necessary cable to get you connected! Please refer to section H.



FEATURES AND SPECIFICATIONS

Features and Benefits

- Sizes 10 to 60 circuits
- For 1.27mm (.050") ribbon cable
- Single polarization

Reference Information

Packaging: Tray
 Tooling Information: See end of section
 UL File No.: E29179
 CSA File No.: LR19980
 Mates With: 5330, 5332, 5340 and 5342
 Use With: 5328 strain relief
 Designed In: Millimeters

Electrical

Current: 1.0A
 Contact Resistance: 20mΩ max.
 Dielectric Withstanding Voltage: 500V AC
 Insulation Resistance: 1000 MΩ min.

Physical

Housing: Black glass-filled polyester, UL 94V-0
 Contact: Phosphor Bronze Alloy
 Plating: See Table
 Operating Temperature: -40 to +105°C
 Cable Accommodation: 26 AWG stranded and 28 AWG stranded and solid
 Insulation Range: 1.14mm (.045") diameter max.



2.54mm (.100") Pitch

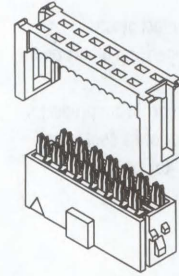
QF 50™

Receptacle

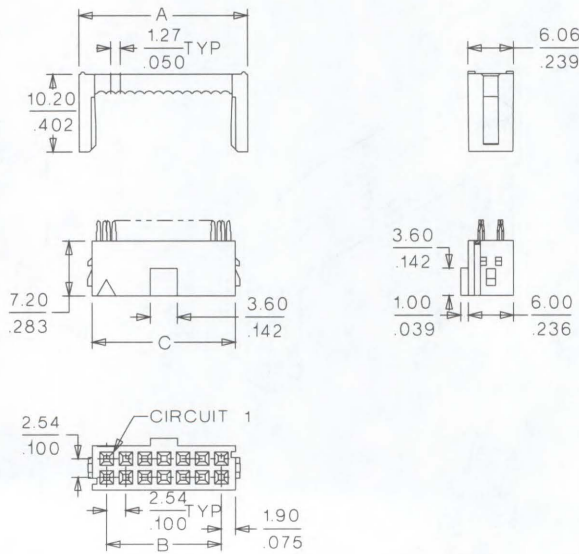
5320-NA

Dual Row

Unloaded Upper Housing



CATALOG DRAWING (FOR REFERENCE ONLY)



ORDERING INFORMATION AND DIMENSIONS

Circuits	Order No.		Dimension		
	Plating NAGS1	Plating NAT2	A	B	C
10	39-51-2100	39-52-1104	17.33 (.682)	10.16 (.400)	13.96 (.550)
14	39-51-2140	39-52-1144	22.41 (.882)	15.24 (.600)	19.04 (.750)
16	39-51-2160	39-52-1164	24.95 (.982)	17.78 (.700)	21.58 (.850)
20	39-51-2200	39-52-1204	30.03 (1.182)	22.86 (.900)	26.66 (1.050)
26	39-51-2260	39-52-1264	37.65 (1.482)	30.48 (1.200)	34.28 (1.350)
30	39-51-2300	39-52-1304	42.73 (1.682)	38.10 (1.500)	39.36 (1.550)
34	39-51-2340	39-52-1344	47.81 (1.882)	40.64 (1.600)	44.44 (1.750)
40	39-51-2400	39-52-1404	55.43 (2.182)	48.26 (1.900)	52.06 (2.050)
50	39-51-2500	39-52-1504	68.13 (2.682)	60.96 (2.400)	64.76 (2.550)
60	39-51-2600		80.83 (3.182)	73.66 (2.900)	77.46 (3.050)

Plating NAGS1: 39μ" (1μm) min. Tin/Lead. Nickel underplate. Contact area: 4μ" (0.1μm) min. Gold. ID area: 39μ" (1μm) min. Tin/Lead.

Plating NAT2: 35μ" (0.9μm) min. Tin overall

FEATURES AND SPECIFICATIONS

Features and Benefits

- Sizes 10 to 64 circuits
- For 1.27mm (.050") ribbon cable
- Single polarization

Reference Information

Packaging: Tray
 UL File No.: E29179
 CSA File No.: LR37272-P21
 Mates With: 5330, 5332, 5340, 5342, 5576 and 5578
 Use With: 5328
 Designed In: Millimeters

Electrical

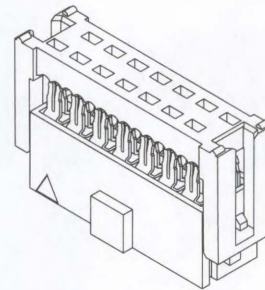
Current: 1.0A
 Contact Resistance: 20mΩ max.
 Dielectric Withstanding Voltage: 500V AC
 Insulation Resistance: 1000 MΩ min.

Physical

Housing: Black glass-filled polyester, UL 94V-0
 Contact: Phosphor Bronze Alloy
 Plating: See Table
 Operating Temperature: -40 to +105°C
 Cable Accommodation: 26 AWG stranded and 28 AWG stranded and solid
 Insulation Range: 1.14mm (.045") diameter max.

molex® 2.54mm (.100) Pitch QF 50™ Receptacle

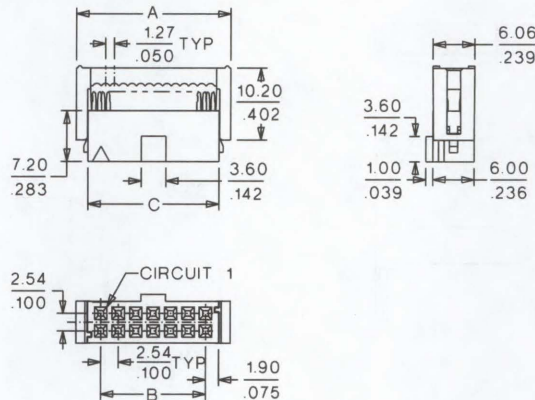
5320-NB Dual Row Preloaded Upper Housing



Ribbon Cable Systems



CATALOG DRAWING (FOR REFERENCE ONLY)



ORDERING INFORMATION AND DIMENSIONS

Circuits	Order No.			Dimension		
	Plating NBGS1	Plating NBGS2	Plating NBT2	A	B	C
10	39-51-2103	39-51-2104	39-52-1105	17.33 (.682)	10.16 (.400)	13.96 (.550)
14	39-51-2143	39-51-2144	39-52-1145	22.41 (.882)	15.24 (.600)	19.04 (.750)
16	39-51-2163	39-51-2164	39-52-1165	24.95 (.982)	17.78 (.700)	21.58 (.850)
20	39-51-2203	39-51-2204	39-52-1205	30.03 (1.182)	22.86 (.900)	26.66 (1.050)
26	39-51-2263	39-51-2264	39-52-1265	37.65 (1.482)	30.48 (1.200)	34.28 (1.350)
30	39-51-2303	39-51-2304	39-52-1305	42.73 (1.682)	35.56 (1.400)	39.36 (1.550)
34	39-51-2343	39-51-2344	39-52-1345	47.81 (1.882)	40.64 (1.600)	44.44 (1.750)
40	39-51-2403	39-51-2404	39-52-1405	55.43 (2.182)	48.26 (1.900)	52.06 (2.050)
50	39-51-2503	39-51-2504	39-52-1505	68.13 (2.682)	60.96 (2.400)	64.76 (2.550)
60	39-51-2603	39-51-2604		80.83 (3.182)	73.66 (2.900)	77.46 (3.050)
64	39-51-2643	39-51-2644		85.91 (3.382)	78.74 (3.000)	82.54 (3.250)

Plating NBGS1: 39μ" (1μm) min. Nickel underplate. Contact area: 4μ" (0.1μm) min. Gold. ID area: 1μm min. Tin/Lead.

Plating NBGS2: 39μ" (1μm) min. Nickel underplate. Contact area: 30μ" (0.76μm) min. Gold. ID area: 1μm min. Tin/Lead.

Plating NBT2: 35μ" (.9μm) min. Tin overall

FEATURES AND SPECIFICATIONS

Features and Benefits

- Sizes 10 to 60 circuits
- Symmetrical

Reference Information

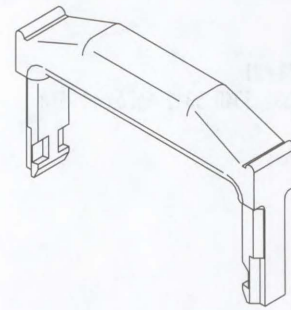
Packaging: Bag
 UL File No.: E29179-E
 Use With: 5320-NA and 5320-NB
 Designed In: Millimeters

Physical

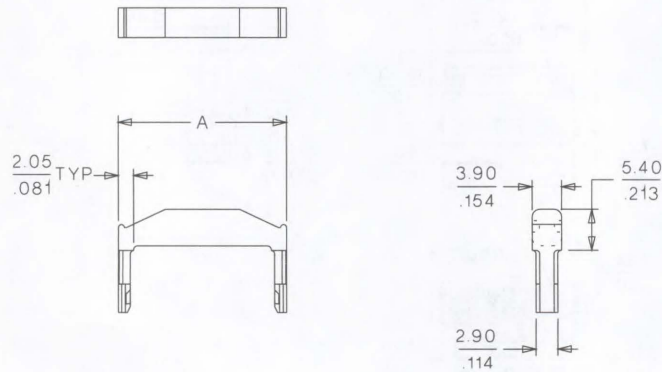
Housing: Black polyester, UL 94V-0

molex® QF 50™ Strain Relief

5328



CATALOG DRAWING (FOR REFERENCE ONLY)



ORDERING INFORMATION AND DIMENSIONS

Circuits*	Order No.	Dimension A
10	15-25-1103	17.33 (.682)
14	15-25-1143	22.41 (.882)
16	15-25-1163	24.95 (.982)
20	15-25-1203	30.03 (1.782)
26	15-25-1263	37.65 (1.482)
30	15-25-1303	42.73 (1.682)
34	15-25-1343	47.81 (1.882)
40	15-25-1403	55.43 (2.182)
50	15-25-1503	68.13 (2.682)
60	15-25-1603	80.83 (3.182)

* Number of circuits on mating connector

FEATURES AND SPECIFICATIONS

Features and Benefits

- Sizes 10 to 64 circuits
- Available with or without polarization
- Complies with industry-standard DIN 41651 and MIL-3-83503 keying
- Selective Gold plating option for contacts
- Available in various packaging styles

Reference Information

Product Specification: PS-99020-0015
 Packaging: Tray (contact Molex for chain)
 Tooling Information: See end of section
 Mates With: 90663
 Use With: 90170 strain relief
 Designed In: Millimeters

Electrical

Voltage: 250V
 Current: 1.0A
 Contact Resistance: 20mΩ max.
 Dielectric Withstanding Voltage: 500V AC
 Insulation Resistance: 1000 MΩ min.

Mechanical

Mating Force: 350g (0.77 lb) max. per circuit
 Unmating Force: 50g (0.11 lb) min. per circuit
 Durability: 300 cycles max.

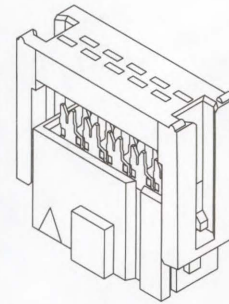
Physical

Housing: Glass-filled polyester, UL 94V-0
 Contact: Copper Alloy
 Plating: See Table
 Operating Temperature: -25 to +85°C
 Cable Accommodation: 26 AWG stranded and 28 AWG stranded and solid

molex® 1.27mm (.050") Pitch QF 50™ Receptacle

90635

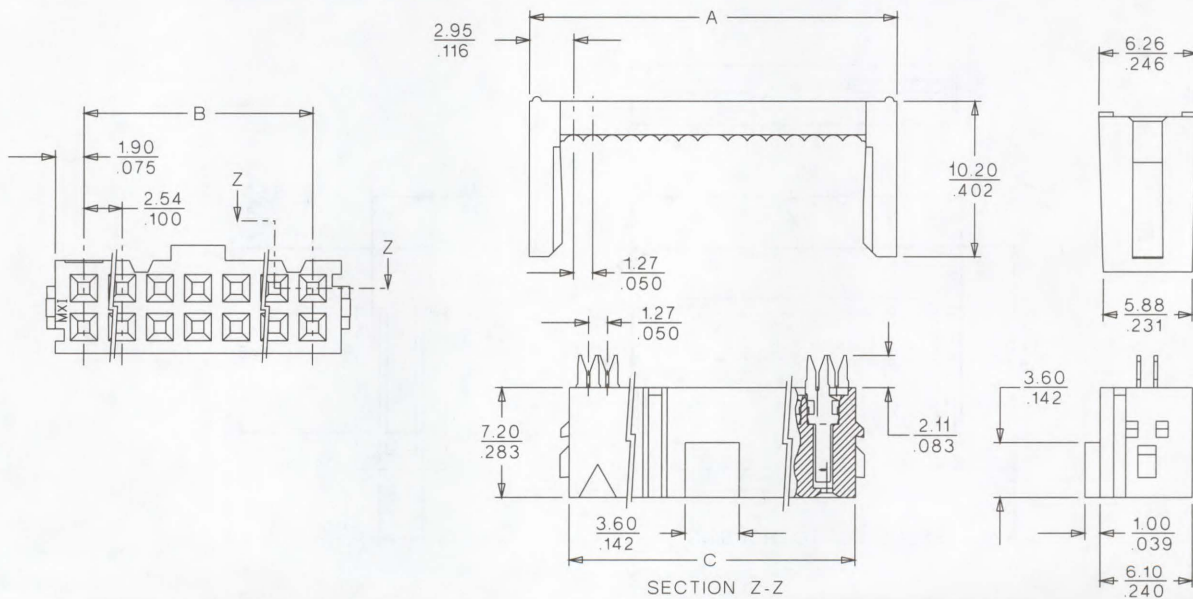
Vertical, MIL/DIN Version



Ribbon Cable Systems

H

CATALOG DRAWING (FOR REFERENCE ONLY)



ORDERING INFORMATION AND DIMENSIONS

Circuits	Order No.						Dimension		
	With Polarization			Without Polarization			A	B	C
	Plating 1	Plating 2	Plating 3	Plating 1	Plating 2	Plating 3			
10	90635-1101	90635-1102	90635-1103	90635-3101	90635-3102	90635-3103	17.30 (.681)	10.16 (.400)	13.96 (.550)
14	90635-1141	90635-1142	90635-1143	90635-3141	90635-3142	90635-3143	22.38 (.881)	15.24 (.600)	19.04 (.750)
16	90635-1161	90635-1162	90635-1163	90635-3161	90635-3162	90635-3163	24.92 (.981)	17.78 (.700)	21.58 (.850)
20	90635-1201	90635-1202	90635-1203	90635-3201	90635-3202	90635-3203	30.00 (1.181)	22.86 (.900)	26.66 (1.050)
24	90635-1241	90635-1242	90635-1243	90635-3241	90635-3242	90635-3243	35.08 (1.381)	27.94 (1.100)	31.74 (1.250)
26	90635-1261	90635-1262	90635-1263	90635-3261	90635-3262	90635-3263	37.62 (1.481)	30.48 (1.200)	34.28 (1.350)
30	90635-1301	90635-1302	90635-1303	90635-3301	90635-3302	90635-3303	42.70 (1.681)	35.56 (1.400)	39.36 (1.550)
34	90635-1341	90635-1342	90635-1343	90635-3341	90635-3342	90635-3343	47.78 (1.881)	40.64 (1.600)	44.44 (1.750)
40	90635-1401	90635-1402	90635-1403	90635-3401	90635-3402	90635-3403	55.40 (2.181)	48.26 (1.900)	52.06 (2.050)
50	90635-1501	90635-1502	90635-1503	90635-3501	90635-3502	90635-3503	68.10 (2.681)	60.96 (2.400)	64.76 (2.550)
60	90635-1601	90635-1602	90635-1603	90635-3601	90635-3602	90635-3603	80.80 (3.181)	73.66 (2.900)	77.46 (3.050)
64	90635-1641	90635-1642	90635-1643	90635-3641	90635-3642	90635-3643	85.88 (3.381)	78.74 (3.100)	82.54 (3.250)

Plating 1: Contact area: 4μm Gold flash min. IDT area: 39μm min. Tin/Lead over Nickel.

Plating 2: Contact area: 30μm Gold min. IDT area: 39μm min. Tin/Lead over Nickel.

Plating 3: Contact area: 15μm Gold min. IDT area: 39μm Tin/Lead over Nickel.

FEATURES AND SPECIFICATIONS

Features and Benefits

- Complies with industry-standard DIN 41651

Reference Information

Product Specification: PS-99020-0015

Packaging: Bag

Use With: 5320 and 90635

Designed In: Inches

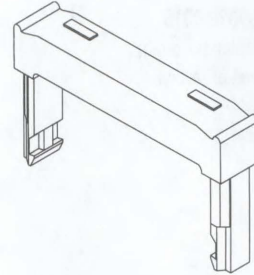
Physical

Housing: Black glass-filled polyester, UL 94V-0

molex® QF 50™ Strain Relief

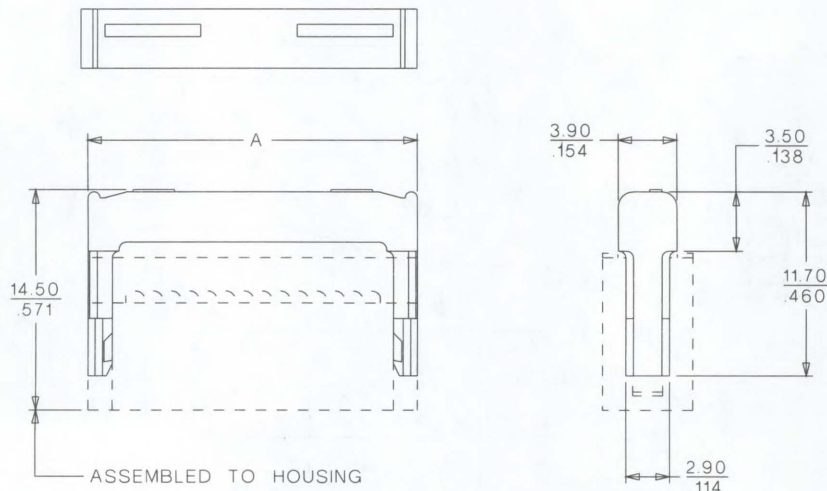
90170

**DIN 41651, Standard
Low Profile**



CATALOG DRAWING (FOR REFERENCE ONLY)

Preferred Version in Europe



ORDERING INFORMATION AND DIMENSIONS

Circuits*	Order No.	Dimension A
10	90170-0010	17.33 (.682)
14	90170-0014	22.41 (.882)
16	90170-0016	24.95 (.982)
20	90170-0020	30.03 (1.182)
26	90170-0026	37.65 (1.482)
30	90170-0030	42.73 (1.682)
34	90170-0034	47.81 (1.882)
40	90170-0040	55.43 (2.182)
50	90170-0050	68.13 (2.682)
60	90170-0060	80.83 (3.182)

* Number of circuits on mating connector

FEATURES AND SPECIFICATIONS

Features and Benefits

- Sizes 10 to 60 circuits
- Selective Gold- and Tin-plated versions

Reference Information

Packaging: Tray
 UL File No.: E29179-E
 Mates With: 5320-NA and 5320-NB
 Designed In: Millimeters

Electrical

Current: 1.0A
 Contact Resistance: 20mΩ max.
 Dielectric Withstanding Voltage: 500V AC
 Insulation Resistance: 1000 MΩ min.

Physical

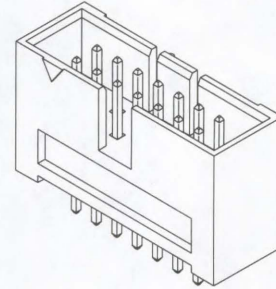
Housing: Black glass-filled polyester, UL 94V-0
 Contact: Brass
 Contact Pin: 0.635mm (.025") square
 Plating: See Table
 Operating Temperature: -40 to +105°C

molex® 2.54mm (.100") Pitch
QF 50™

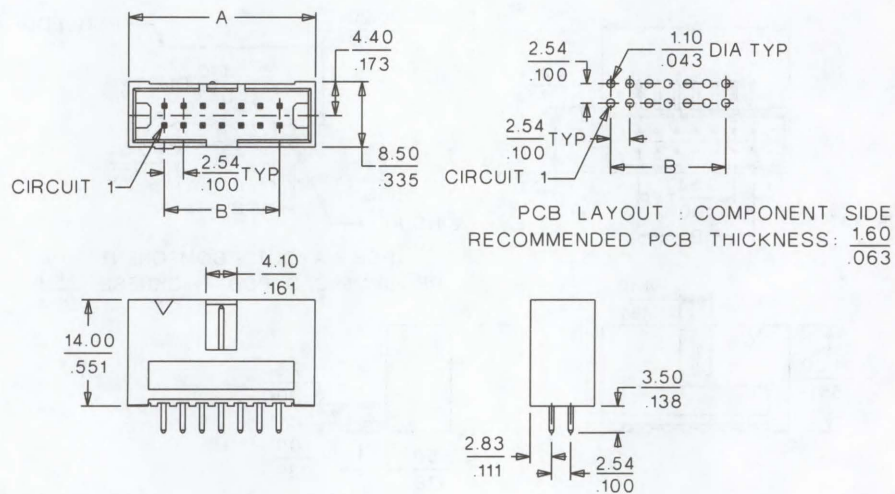
Shrouded Header

5332

**Vertical, Dual Row
 Single Polarization**



CATALOG DRAWING (FOR REFERENCE ONLY)



ORDERING INFORMATION AND DIMENSIONS

Circuits	Order No.		Dimension	
	Plating NGS1	Plating NT2	A	B
10	39-26-7105	39-28-5101	19.66 (.774)	10.16 (.400)
14	39-26-7145	39-28-5141	24.74 (.974)	15.24 (.600)
16	39-26-7165	39-28-5161	27.28 (1.074)	17.78 (.700)
20	39-26-7205	39-28-5201	32.36 (1.274)	22.86 (.900)
26	39-26-7265	39-28-5261	39.98 (1.574)	30.48 (1.200)
30	39-26-7305	39-28-5301	45.06 (1.774)	35.56 (1.400)
34	39-26-7345	39-28-5341	50.14 (1.974)	40.64 (1.600)
40	39-26-7405		57.76 (2.274)	48.26 (1.900)
50	39-26-7505		70.46 (2.774)	60.96 (2.400)
60	39-26-7605		83.16 (3.274)	73.66 (2.900)

Plating NGS1: 39μ" (1μm) min. Nickel underplate. Contact area: 4μ" (0.1μm) min. Gold.
 Solder area: 3μm min. Tin/Lead.

Plating NT2: 35μ" (0.9μm) min. Tin overall

FEATURES AND SPECIFICATIONS

Features and Benefits

- Sizes 10 to 60 circuits
- Selective Gold- and Tin-plated versions

Reference Information

Packaging: Tray
 UL File No.: E29179-E
 Mates With: 5320-NA and 5320-NB
 Designed In: Millimeters

Electrical

Current: 1.0A
 Contact Resistance: 20mΩ max.
 Dielectric Withstanding Voltage: 500V AC
 Insulation Resistance: 1000 MΩ min.

Physical

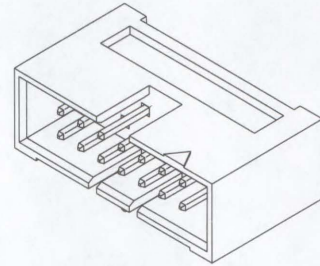
Housing: Black glass-filled polyester, UL 94V-0
 Contact: Brass
 Contact Pin: 0.635mm (.025") square
 Plating: See Table
 Operating Temperature: -40 to +105°C



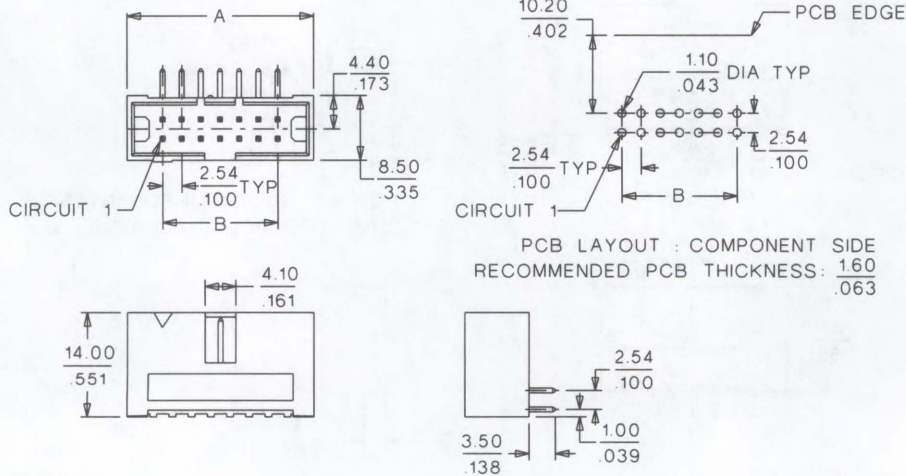
**2.54mm (.100") Pitch
 QF 50™
 Shrouded Header**

5342

**Right Angle, Dual Row Single
 Polarization**



CATALOG DRAWING (FOR REFERENCE ONLY)



ORDERING INFORMATION AND DIMENSIONS

Circuits	Order No.		Dimension	
	Plating NGS1	Plating NT2	A	B
10	39-26-7108	39-28-5104	19.66 (.774)	10.16 (.400)
14	39-26-7148	39-28-5144	24.74 (.974)	15.24 (.600)
16	39-26-7168	39-28-5164	27.28 (1.074)	17.78 (.700)
20	39-26-7208	39-28-5204	32.36 (1.274)	22.86 (.900)
26	39-26-7268	39-28-5264	39.98 (1.574)	30.48 (1.200)
30	39-26-7308	39-28-5304	45.06 (1.774)	35.56 (1.400)
34	39-26-7348	39-28-5344	50.14 (1.974)	40.64 (1.600)
40	39-26-7408		57.76 (2.274)	48.26 (1.900)
50	39-26-7508		70.46 (2.774)	60.96 (2.400)
60	39-26-7608		83.16 (3.274)	73.66 (2.900)

Plating NGS1: 39µ" (1µm) min. Nickel underplate. Contact area: 4µ" (0.1µm) min. Gold.
 Solder area: 3µm min. Tin/Lead.

Plating NT2: 35µ" (0.9µm) min. Tin overall

FEATURES AND SPECIFICATIONS

Features and Benefits

- Sizes 10 to 60 circuits
- Polarized
- Stackable side-by-side
- Latches connector with or without strain relief
- Selective Gold- and overall Tin-plated versions
- Lever spring pins—Stainless Steel

Reference Information

Packaging: Tray
 UL File No.: E29179-E
 CSA File No.: LR19980
 Mates With: 5320-NA and 5320-NB
 Designed In: Millimeters

Electrical

Current: 1.0A
 Contact Resistance: 20mΩ max.
 Dielectric Withstanding Voltage: 500V AC
 Insulation Resistance: 1000 MΩ min.

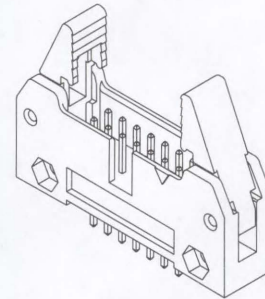
Physical

Housing: Black glass-filled polyester, UL 94V-0
 Contact: Brass
 Contact Pins: 0.635mm (.025") square
 Plating: See Table
 Operating Temperature: -40 to +105°C

molex® 2.54mm (.100") Pitch QF 50™ Shrouded Header

5330

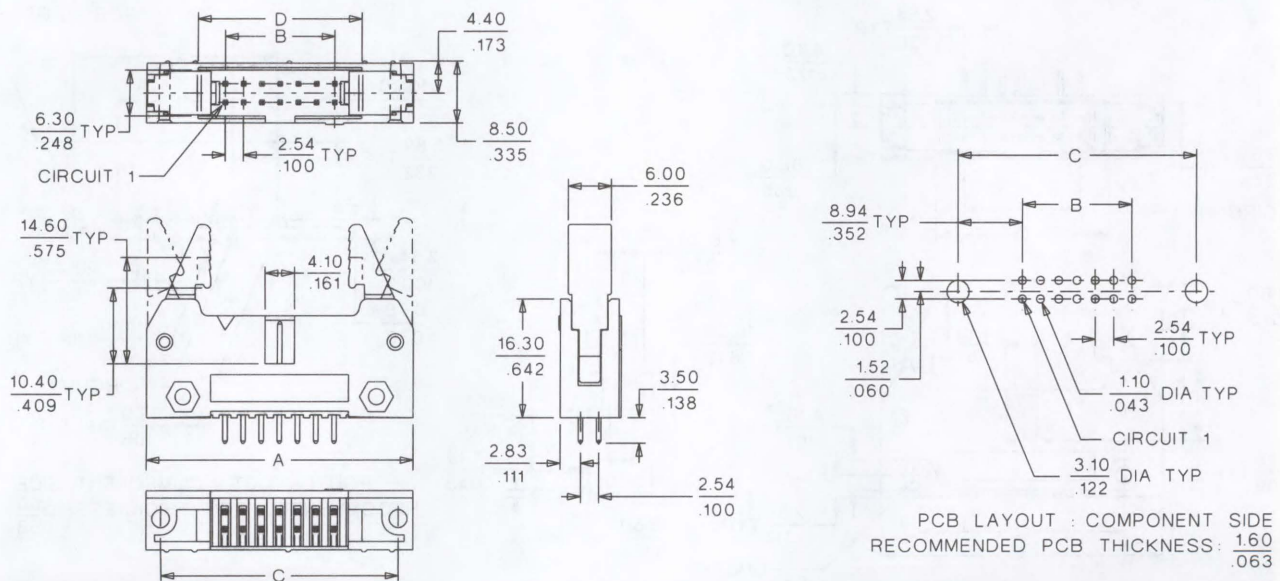
Vertical, Dual Row With Eject Levers



Ribbon Cable Systems

H

CATALOG DRAWING (FOR REFERENCE ONLY)



ORDERING INFORMATION AND DIMENSIONS

Circuits	Order No.		Dimension			
	Plating NBGS1	Plating NBT2	A	B	C	D
10	39-26-6106	39-28-5100	32.16 (1.266)	10.16 (.400)	28.04 (1.104)	17.76 (.700)
14	39-26-6146	39-28-5140	37.24 (1.466)	15.24 (.600)	33.12 (1.304)	22.84 (.900)
16	39-26-6166	39-28-5160	39.78 (1.566)	17.78 (.700)	35.66 (1.404)	25.38 (1.000)
20	39-26-6206	39-28-5200	44.86 (1.766)	22.86 (.900)	40.74 (1.604)	30.46 (1.200)
26	39-26-6266	39-28-5260	52.48 (2.066)	30.48 (1.200)	48.36 (1.904)	38.08 (1.500)
30	39-26-6306	39-28-5300	57.56 (2.266)	35.56 (1.400)	53.44 (2.104)	43.16 (1.700)
34	39-26-6346	39-28-5340	62.64 (2.466)	40.64 (1.600)	58.52 (2.304)	48.24 (1.900)
40	39-26-6406	39-28-5400	70.26 (2.766)	48.26 (1.900)	66.14 (2.604)	55.86 (2.200)
50	39-26-6506	39-28-5500	82.96 (3.266)	60.96 (2.400)	78.84 (3.104)	68.56 (2.700)
60	39-26-6606		95.66 (3.766)	73.66 (2.900)	91.54 (3.604)	81.26 (3.200)

Plating NBGS1: 39μ" (1μm) min. Nickel underplate. Contact area: 4μ" (0.1μm) min. Gold. Solder area: 3μm min. Tin/Lead.
 Plating NBT2: 35μ" (0.9μm) min. Tin overall

FEATURES AND SPECIFICATIONS

Features and Benefits

- Sizes 10 to 60 circuits
- Polarized
- Stackable side-by-side
- Selective Gold- and overall Tin-plated versions
- Lever spring pins—Stainless Steel

Reference

Packaging: Tray
 UL File No.: E29179-E
 Mates With: 5320-NA and 5320-NB
 Designed In: Millimeters

Electrical

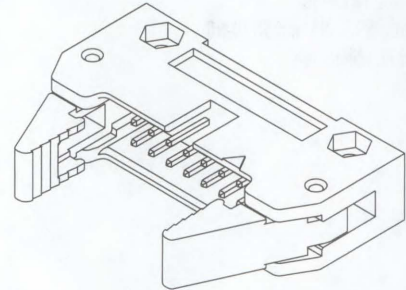
Current: 1.0A
 Contact Resistance: 20mΩ max.
 Dielectric Withstanding Voltage: 500V AC
 Insulation Resistance: 1000 MΩ min.

Physical

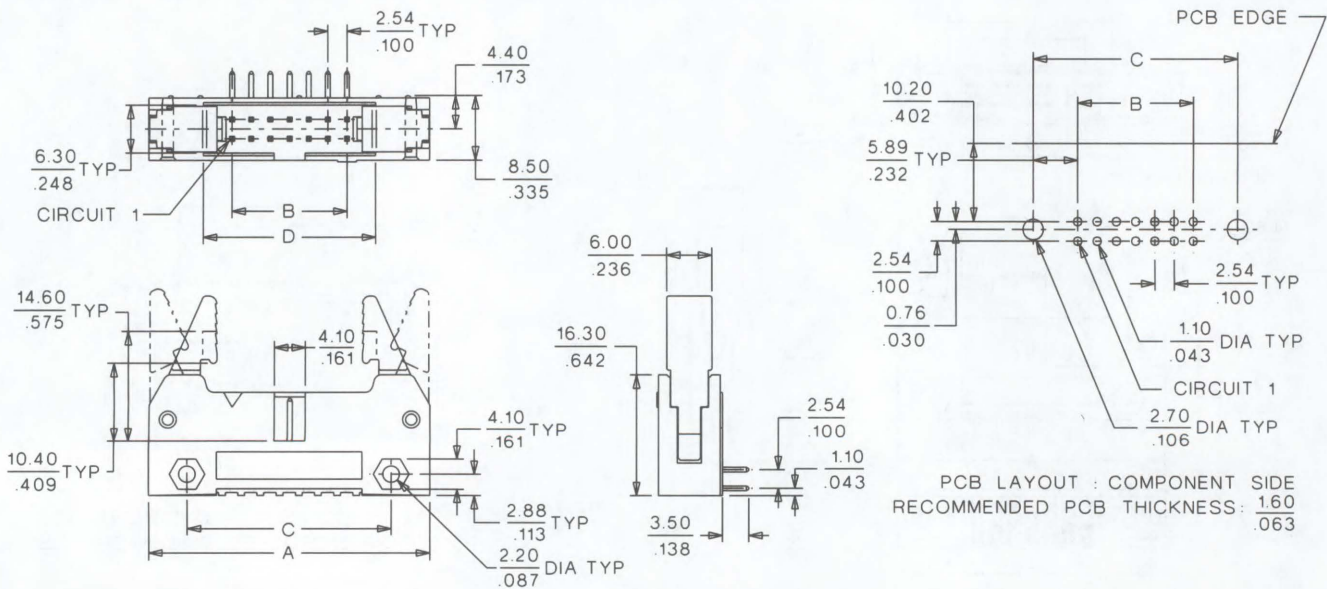
Housing: Black glass-filled polyester, UL 94V-0
 Contact: Brass
 Contact Pin: 0.635mm (.025") square
 Plating: See Table
 Operating Temperature -40 to +105°C

**molex® 2.54mm (.100") Pitch
 QF 50™
 Shrouded Header**

**5340
 Right Angle, Dual Row
 With Eject Levers**



CATALOG DRAWING (FOR REFERENCE ONLY)



ORDERING INFORMATION AND DIMENSIONS

Circuits	Order No.		Dimension			
	Plating NBGS1	Plating NBT2	A	B	C	D
10	39-26-7102	39-28-5103	32.16 (1.266)	17.76 (.700)	21.94 (.864)	10.16 (.400)
14	39-26-7142	39-28-5143	37.24 (1.466)	22.84 (.900)	27.02 (1.064)	15.24 (.600)
16	39-26-7162	39-28-5163	39.78 (1.566)	25.38 (1.000)	29.56 (1.164)	17.78 (.700)
20	39-26-7202	39-28-5203	44.86 (1.766)	30.46 (1.200)	34.64 (1.364)	22.86 (.900)
26	39-26-7262	39-28-5263	52.48 (2.066)	38.08 (1.500)	42.26 (1.664)	30.48 (1.200)
30	39-26-7302	39-28-5303	57.56 (2.266)	43.16 (1.700)	47.34 (1.864)	35.56 (1.400)
34	39-26-7342	39-28-5343	62.64 (2.466)	48.24 (1.900)	52.42 (2.064)	40.64 (1.600)
40	39-26-7402	39-28-5403	70.26 (2.766)	55.86 (2.200)	60.04 (2.364)	48.26 (1.900)
50	39-26-7502	39-28-5503	82.96 (3.266)	68.56 (2.700)	72.74 (2.864)	60.96 (2.400)
60	39-26-7602		95.66 (3.766)	81.26 (3.200)	85.44 (3.364)	73.66 (2.900)

Plating NBGS1: 39µ" (1µm) min. Nickel underplate. Contact area: 4µ" (0.1µm) min. Gold. Solder area: 3µm min. Tin/Lead.
 Plating NBT2: 35µ" (0.9µm) min. Tin overall

FEATURES AND SPECIFICATIONS

Features and Benefits

- 10 to 64 circuits
- Tin plated on solder tail
- Complies with industry standard DIN 41654
- Polarized
- Selective Gold plating options for contacts
- Eject levers allow end-to-end stacking with or without strain relief with no loss of board space

Reference Information

Packaging: Tray
Designed In: Millimeters
Mates With: 5320

Electrical

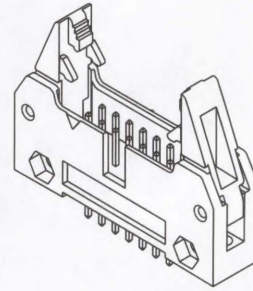
Voltage: 250V
Current: 1.0A
Contact Resistance: 20mΩ max.
Dielectric Withstanding Voltage: 500V
Insulation Resistance: 1000 MΩ min.

Physical

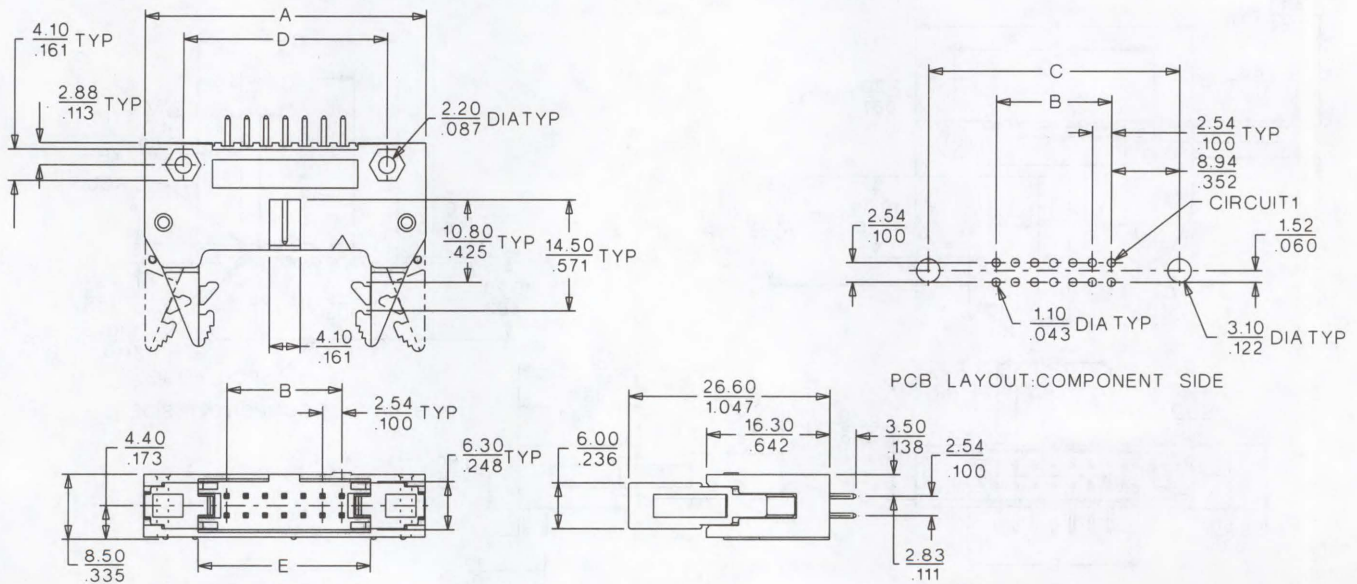
Housing: Glass-filled PBTP
Contact: Brass
Operating Temperature: -40 to +105°C

molex® 2.54mm (.100) Pitch QF 50™ Shrouded Header

5576 Vertical With Eject Levers



CATALOG DRAWING (FOR REFERENCE ONLY)



ORDERING INFORMATION AND DIMENSIONS

Circuits	Order No.			Dimension				
	Plating NBGS1	Plating NBGS2	Plating NBT2	A	B	C	D	E
10	39-27-1103	39-27-1104	39-28-5105	32.16 (1.266)	10.16 (0.400)	28.04 (1.104)	21.94 (0.864)	17.76 (0.700)
14	39-27-1143	39-27-1144	39-28-5145	37.24 (1.466)	15.24 (0.600)	33.12 (1.304)	27.02 (1.064)	22.84 (0.900)
16	39-27-1163	39-27-1144	39-28-5165	39.78 (1.566)	17.78 (0.700)	35.66 (1.404)	29.56 (1.164)	25.38 (1.000)
20	39-27-1203	39-27-1144	39-28-5205	44.86 (1.766)	22.86 (0.900)	40.74 (1.604)	34.64 (1.364)	30.46 (1.200)
26	39-27-1263	39-27-1154	39-28-5265	52.48 (2.066)	30.48 (1.200)	48.36 (1.904)	42.26 (1.664)	38.08 (1.500)
30	39-27-1303	39-27-1154	39-28-5305	57.56 (2.266)	35.56 (1.400)	53.44 (2.104)	47.34 (1.864)	43.16 (1.700)
34	39-27-1343	39-27-1154	39-28-5345	62.64 (2.466)	40.64 (1.600)	58.52 (2.304)	52.42 (2.064)	48.24 (1.900)
40	39-27-1403	39-27-1154	39-28-5405	70.26 (2.766)	48.26 (1.900)	66.14 (2.604)	60.04 (2.364)	55.86 (2.200)
50	39-27-1503	39-27-1154	39-28-5505	82.96 (3.266)	60.96 (2.400)	78.84 (3.104)	72.74 (2.864)	68.56 (2.700)
60	39-27-1603	39-27-1154		95.66 (3.766)	73.66 (2.900)	91.54 (3.604)	85.44 (3.364)	81.26 (3.200)
64	39-27-1643	39-27-1154		100.74 (3.966)	78.74 (3.100)	96.62 (3.804)	90.52 (3.564)	86.34 (3.400)

Plating NBGS1: 39μ" (1μm) min. Nickel underplate. Contact area: 0.1μm min. Gold.
Solder area: 3μm min. Tin/Lead.

Plating NBGS2: 39μ" (1μm) min. Nickel underplate. Contact area: 0.76μm min. Gold.
Solder area: 3μm min. Tin/Lead.

Plating NBT2: 20μ" (0.5μm) min. Nickel underplate. Contact and solder area: 39μ" (1μm) min. Tin.

FEATURES AND SPECIFICATIONS

Features and Benefits

- Sizes 10 to 64 circuits
- Tin plated on solder tail
- Complies with industry-standard DIN 41651 and MIL-3-83503 keying
- Selective Gold plating options for contacts
- Eject levers allow end-to-end stacking with or without strain relief with no loss of board space
- Polarized
- Contact Molex for variations on eject levers

Reference Information

Product Specification: PS-99020-0015
 Packaging: Tray
 Mates With: 90635
 Designed In: Millimeters

Electrical

Voltage: 250V
 Current: 2.5A
 Contact Resistance: 20mΩ max.
 Dielectric Withstanding Voltage: 500V AC
 Insulation Resistance: 1000 MΩ min.

Mechanical

Pin Retention Force: 1.5kg (3.3 lb)
 Mating Force: 350g (0.77 lb) max. per circuit
 Unmating Force: 50g (0.11 lb) min. per circuit
 Durability: 300 cycles max.

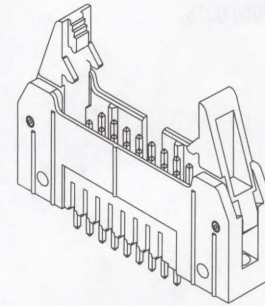
Physical

Housing: Black glass-filled polyester, UL 94V-0
 Contact: Copper Alloy
 Plating: See Table
 Operating Temperature: -25 to +85°C

molex® 2.54mm (.100") Pitch QF 50™ Shrouded Header

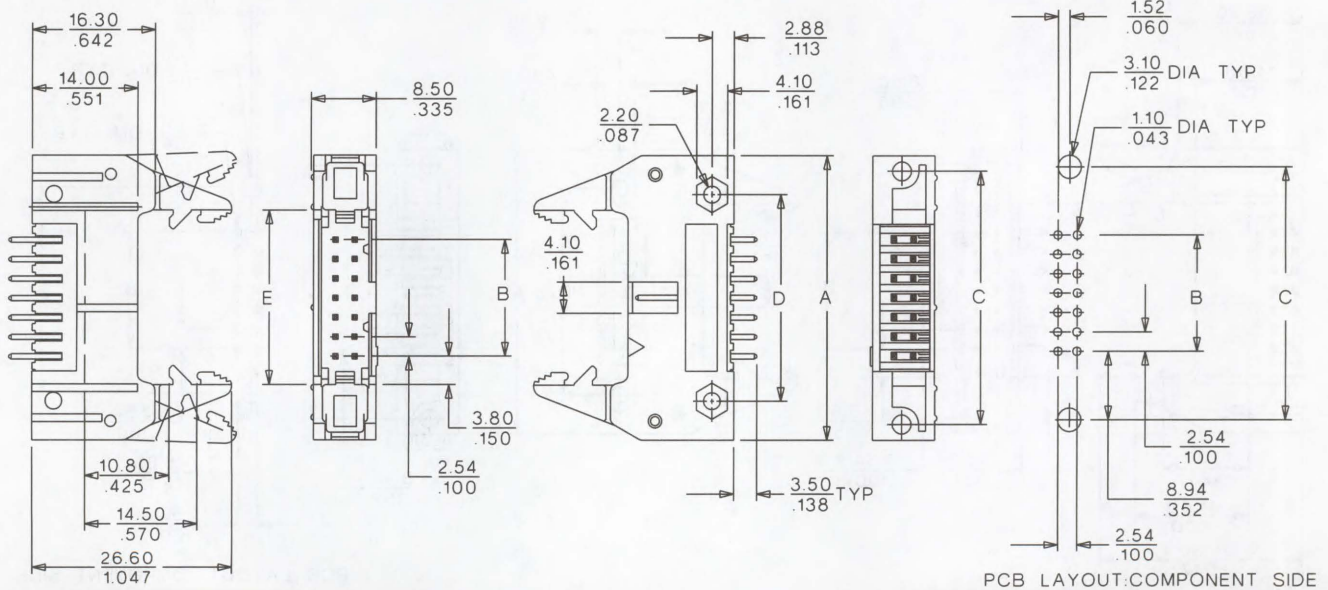
90663

Vertical, MIL Keying With Latch/Eject Levers



Note: Also available with 91081 ejectors. Please contact Molex.

CATALOG DRAWING (FOR REFERENCE ONLY)



ORDERING INFORMATION AND DIMENSIONS

Circuits	Order No.			Dimension				
	Plating 1	Plating 2	Plating 3	A	B	C	D	E
10	90663-1101	90663-1102	90663-1103	32.16 (1.266)	10.16 (.400)	28.04 (1.104)	21.94 (.864)	17.76 (.700)
14	90663-1141	90663-1142	90663-1143	37.24 (1.466)	15.24 (.600)	33.12 (1.304)	27.02 (1.064)	22.84 (.900)
16	90663-1161	90663-1162	90663-1163	39.78 (1.566)	17.78 (.700)	35.66 (1.404)	29.56 (1.164)	25.38 (1.000)
20	90663-1201	90663-1202	90663-1203	44.86 (1.766)	22.86 (.900)	40.74 (1.604)	34.64 (1.364)	30.46 (1.200)
26	90663-1261	90663-1262	90663-1263	52.48 (2.066)	30.48 (1.200)	48.36 (1.904)	42.26 (1.664)	38.08 (1.500)
30	90663-1301	90663-1302	90663-1303	57.56 (2.266)	35.56 (1.400)	53.44 (2.104)	47.34 (1.864)	43.16 (1.700)
34	90663-1341	90663-1342	90663-1343	62.64 (2.466)	40.64 (1.600)	58.52 (2.304)	52.42 (2.064)	48.24 (1.900)
40	90663-1401	90663-1402	90663-1403	70.26 (2.766)	48.26 (1.900)	66.14 (2.604)	60.04 (2.364)	55.86 (2.200)
50	90663-1501	90663-1502	90663-1503	82.96 (3.266)	60.96 (2.400)	78.84 (3.104)	72.74 (2.864)	68.56 (2.700)
60	90663-1601	90663-1602	90663-1603	95.66 (3.766)	73.66 (2.900)	91.54 (3.604)	85.44 (3.364)	81.26 (3.200)
64	90663-1641	90663-1642	90663-1643	100.74 (3.966)	78.74 (3.100)	96.62 (3.804)	90.52 (3.564)	86.34 (3.400)

Plating 1: 4μ" Gold in contact area, 118μ" Tin in solder area, 39μ" Nickel underplate
 Plating 2: 30μ" Gold in contact area, 118μ" Tin in solder area, 39μ" Nickel underplate
 Plating 3: 10μ" Gold in contact area, 118μ" Tin in solder area, 39μ" Nickel underplate

FEATURES AND SPECIFICATIONS

Features and Benefits

- Sizes 10 to 64 circuits
- Tin plated on solder tail
- Complies with industry-standard DIN 41651 and MIL-3 83503 keying
- Selective Gold plating options for contacts
- Eject levers allow end-to-end stacking with or without strain relief with no loss of board space
- Polarized
- Contact Molex for variations on eject levers

Reference Information

Product Specification: PS-99020-0015
 Packaging: Tray
 Mates With: 90635
 Designed In: Millimeters

Electrical

Voltage: 250V
 Current: 2.5A
 Contact Resistance: 20mΩ max.
 Dielectric Withstanding Voltage: 500V AC
 Insulation Resistance: 1000 MΩ2 min.

Mechanical

Pin Retention Force: 1.5kg (3.3 lb)
 Mating Force: 350g (0.77 lb) max. per circuit
 Unmating Force: 50g (0.11 lb) min. per circuit
 Durability: 300 cycles max.

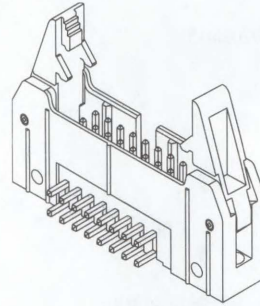
Physical

Housing: Black glass-filled polyester, UL 94V-0
 Contact: Copper Alloy
 Plating: See Table
 Operating Temperature: -25 to +85°C

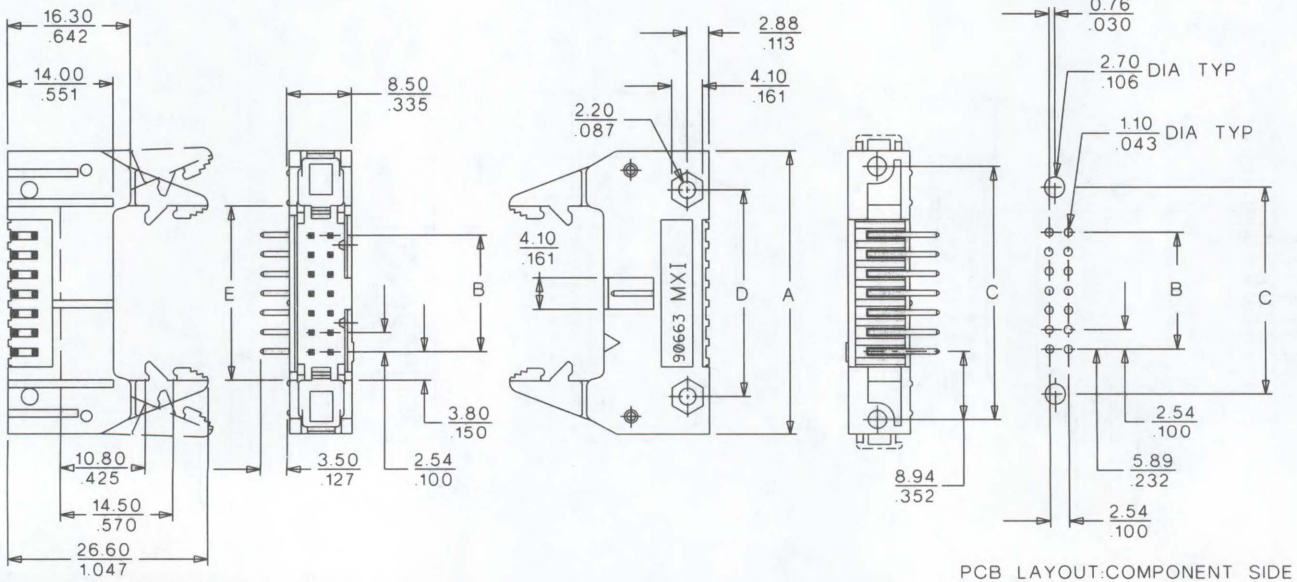
**molex® 2.54mm (.100") Pitch
 QF 50™
 Shrouded Header**

90663

**Right Angle, MIL Keying
 With Latch/Eject Levers**



CATALOG DRAWING (FOR REFERENCE ONLY)



ORDERING INFORMATION AND DIMENSIONS

Circuits	Order No.			Dimension				
	Plating 1	Plating 2	Plating 3	A	B	C	D	E
10	90663-3101	90663-3102	90663-3103	32.16 (1.266)	10.16 (.400)	28.04 (1.104)	21.94 (.864)	17.76 (.700)
14	90663-3141	90663-3142	90663-3143	37.24 (1.466)	15.24 (.600)	33.12 (1.304)	27.02 (1.064)	22.84 (.900)
16	90663-3161	90663-3162	90663-3163	39.78 (1.566)	17.78 (.700)	35.66 (1.404)	29.56 (1.164)	25.38 (1.000)
20	90663-3201	90663-3202	90663-3203	44.86 (1.766)	22.86 (.900)	40.74 (1.604)	34.64 (1.364)	30.46 (1.200)
26	90663-3261	90663-3262	90663-3263	52.48 (2.066)	30.48 (1.200)	48.36 (1.904)	42.26 (1.664)	38.08 (1.500)
30	90663-3301	90663-3302	90663-3303	57.56 (2.266)	35.56 (1.400)	53.44 (2.104)	47.34 (1.864)	43.16 (1.700)
34	90663-3341	90663-3342	90663-3343	62.64 (2.466)	40.64 (1.600)	58.52 (2.304)	52.42 (2.064)	48.24 (1.900)
40	90663-3401	90663-3402	90663-3403	70.26 (2.766)	48.26 (1.900)	66.14 (2.604)	60.04 (2.364)	55.86 (2.200)
50	90663-3501	90663-3502	90663-3503	82.96 (3.266)	60.96 (2.400)	78.84 (3.104)	72.74 (2.864)	68.56 (2.700)
60	90663-3601	90663-3602	90663-3603	95.66 (3.766)	73.66 (2.900)	91.54 (3.604)	85.44 (3.364)	81.26 (3.200)
64	90663-3641	90663-3642	90663-3643	100.74 (3.966)	78.74 (3.100)	96.62 (3.804)	90.52 (3.564)	86.34 (3.400)

Plating 1: 4μ" Gold in contact area, 118μ" Tin in solder area, 39μ" Nickel underplate
 Plating 2: 30μ" Gold in contact area, 118μ" Tin in solder area, 39μ" Nickel underplate
 Plating 3: 10μ" Gold in contact area, 118μ" Tin in solder area, 39μ" Nickel underplate

FEATURES AND SPECIFICATIONS

Features and Benefits

- Sizes 10 to 60 circuits
- 6.00mm (.236") wide; uses minimal board space
- Symmetrical upper housing
- U-contact terminal design

Reference Information

Packaging: Tray
 UL File No.: E29179-E
 CSA File No.: LR19980
 Use Molex Cable: 6800 and 40158
 Designed In: Millimeters

Electrical

Current: 1.0A
 Contact Resistance: 20mΩ max.
 Dielectric Withstanding Voltage: 500V AC
 Insulation Resistance: 1000 MΩ min.

Physical

Housing: Black polyester, UL 94V-0
 Contact: Phosphor Bronze
 Plating: Tin
 Operating Temperature: -40 to +105°C
 Cable Accommodation: 28 AWG stranded
 Insulation Range: 1.14mm (.045") diameter max.



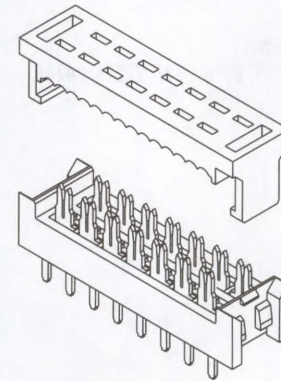
2.54mm (.100") Pitch

QF 50™

Transition Connector

5360

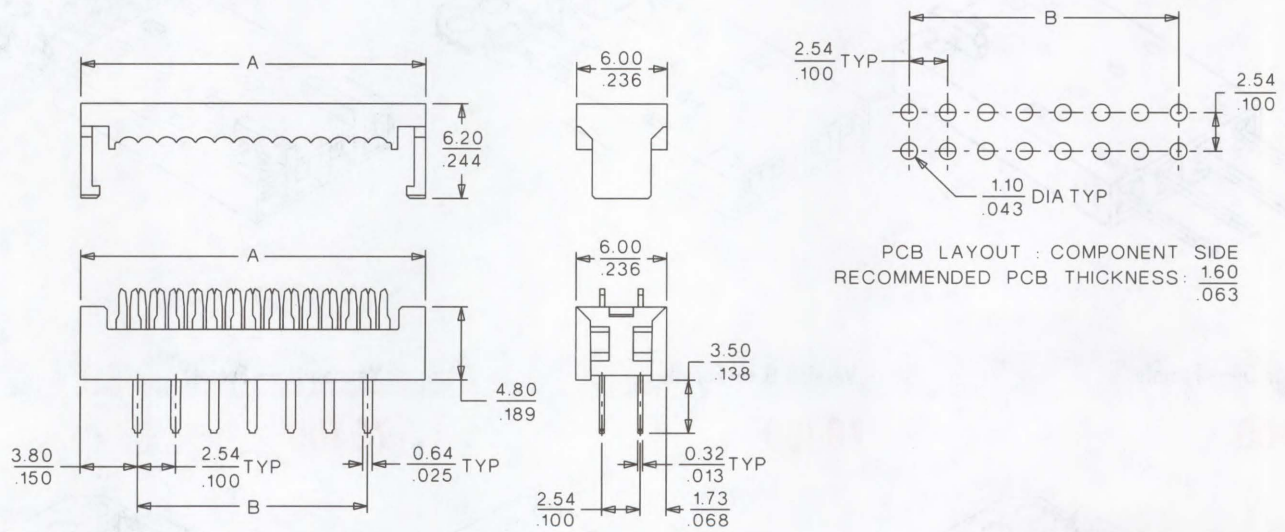
Dual Row,
 Unloaded Upper Housing



Ribbon Cable Systems

H

CATALOG DRAWING (FOR REFERENCE ONLY)



ORDERING INFORMATION AND DIMENSIONS

Circuits	Order No.	Dimension	
		A	B
10	• 15-38-0103	17.76 (.699)	10.16 (.400)
14	• 15-38-0143	22.84 (.899)	15.24 (.600)
16	• 15-38-0163	25.38 (.999)	17.78 (.700)
20	• 15-38-0203	30.46 (1.199)	22.86 (.900)
26	• 15-38-0263	38.08 (1.499)	30.48 (1.200)
30	• 15-38-0303	43.16 (1.699)	35.56 (1.400)
34	• 15-38-0343	48.24 (1.899)	40.64 (1.600)
40	• 15-38-0403	55.86 (2.199)	48.26 (1.900)
50	• 15-38-0503	68.56 (2.699)	60.96 (2.400)
60	• 15-38-0603	81.26 (3.199)	73.66 (2.900)

• US Standard Product, available through Molex franchised distributors

FEATURES AND SPECIFICATIONS

Features and Benefits

- Sizes 2 to 25 circuits
- Modular connectors for use with C-Grid single row shrouded headers and clips
- Terminals preloaded into housings
- Polarization and positive locking options

Reference Information

Packaging: Tube
 UL File No.: E29179
 CSA File No.: LR19980
 Mates With: Single row headers
 Use Molex Cable: 7307, 7767, 8996, 8997, 24226, 24241, 24369 and 24389
 Designed In: Inches

Electrical

Voltage: 250V
 Current: 3.0A max
 Contact Resistance: 15mΩ max.
 Dielectric Withstanding Voltage: 1500V
 Insulation Resistance: 10,000 MΩ min.

Mechanical

Contact Insertion Force: 3.11N (0.7 lb) max.
 Contact Retention to Housing: 17.79N (4 lb) min. for 15 seconds
 Durability: Gold—50 cycles; Tin—25 cycles

Physical

Housing: Polyester, UL 94V-0
 Contact: Phosphor Bronze
 Plating: See Table
 Operating Temperature: -40 to +105°C



2.54mm (.100") Pitch

SL™

Ribbon Cable Connectors

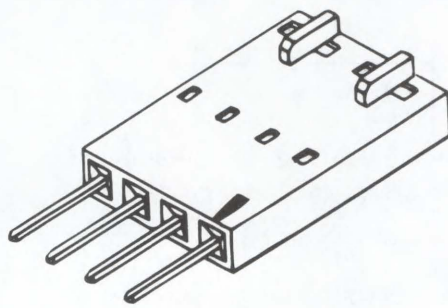
70400/70475

Single Row Cable Connector System

Please refer to section A of this catalog for more detailed information

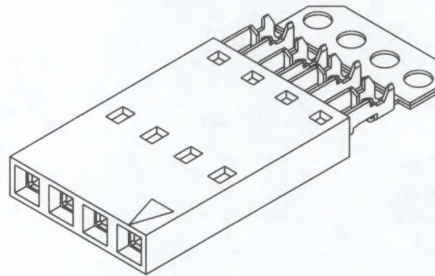
Version D — Male

70475



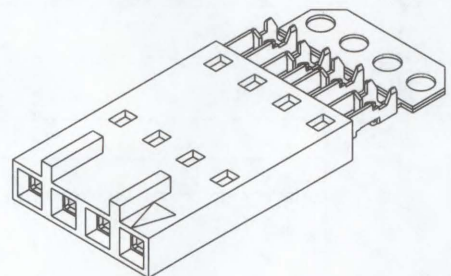
Version A — Female

70400



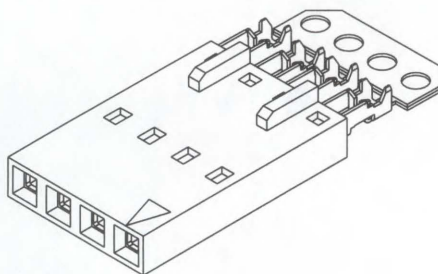
Version C — Female

70400



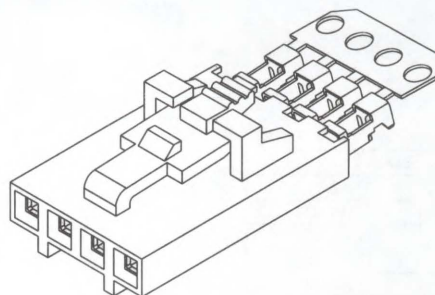
Version D — Female

70400



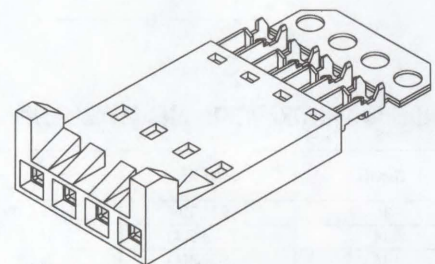
Version G — Female

70400



Version H — Female

70400

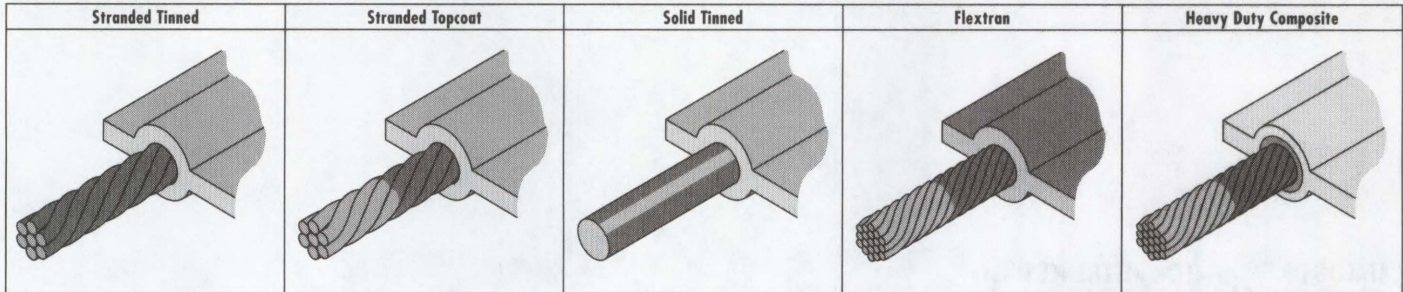




Flat Ribbon Cable Guide and Electrical Specifications

Select Conductor Type:

- **Stranded Tinned**—Flexible conductor formed by individually Tin-coated wires twisted together for added flexibility. Recommended only for assemblies with no stripping of insulation.
- **Stranded Topcoat**—Flexible conductor formed by bare wires twisted together and Tin-coated on top to prevent fraying of exposed wire tips. Provides easier insertion of wires in PC board holes and is ideal for direct soldering of cable PC board. Recommended for board-to-board cable jumpers.
- **Solid Tinned**—Single solid wire conductor, Tin-coated, is less flexible than stranded. Exposed wire tips remain rigid and hold spacing. Easy to insert into PC board holes. Recommended for board-to-board jumpers.
- **Flextran™**—High flex life stranded topcoat conductor made of highly flexible Copper Alloy, used in high flex cycle applications. Ideal for board-to-board jumpers or cable assemblies.
- **Heavy Duty Composite**—Stranded conductor overcoated with irradiated primary insulation to prevent sharp edges from cutting through insulation and to prevent melting conductor. Ideal for board-to-board jumpers or cable assemblies.



Select wire gauge (AWG) and centerline spacing (pitch). Refer to listed page number for bulk cable ordering information. Refer to page H-46 for ordering notched bulk cable and cable assemblies

ROUND CONDUCTOR FLAT CABLE											
Pitch	Circuit Size	AWG	Copper Conductor Type [†]	Max. Conductor Resistance, mΩ/ft	Nominal Characteristic Impedance, Ω		Nominal Capacitance, pf/ft		Nominal Prop. Delay, ns/ft	Min. Dielectric Withstanding Voltage, (VRMS)	Page No.
					GS*	GSG [†]	GS	GSG			
1.00 (.039)	10-50	28	Stranded, Tinned (7 x 36)	68	112	83	11.8	18.3	1.4	1500	H-3
	3-68	28	Stranded, Tinned (7 x 36)	68	123	100	9.1	17.0	1.4	2000	H-4 to H-6
1.27 (.050)	3-64	26	Stranded, Tinned (7 x 34)	43	115	93	8.9	18.0	1.4	2000	
	3-68	28	Stranded, Topcoat (7 x 36)	68	123	100	9.1	17.0	1.4	2000	
1.50 (.059)	2-30	26	Stranded, Topcoat (7 x 34)	43	121	99	9.0	16.5	1.4	2000	H-8
		26	Stranded, Tinned (7 x 34)	43	133	111	7.3	13.4	1.4	2000	
2.00 (.079)	2-28	26	Stranded, Topcoat (7 x 34)	43	133	111	7.3	13.4	1.4	2000	H-10
		24	Stranded, Tinned (7 x 32)	27	124	104	8.2	14.6	1.4	2000	
		24	Stranded, Topcoat (7 x 32)	27	124	104	8.2	14.6	1.4	2000	
		26	Stranded, Tinned (7 x 34)	43	143	121	5.7	10.4	1.4	2000	
2.50 (.098)	2-30	26	Stranded, Topcoat (7 x 34)	43	143	121	5.7	10.4	1.4	2000	H-11
		24	Stranded, Tinned (7 x 32)	27	133	113	6.6	11.8	1.4	2000	
		24	Stranded, Topcoat (7 x 32)	27	133	113	6.6	11.8	1.4	2000	
		26	Solid, Tinned (1 x 26)	45	150	128	5.2	9.2	1.4	2000	
2.54 (.100)	2-36	28	Stranded, Tinned (7 x 36)	68	150	128	5.0	9.1	1.4	2000	H-12
		22	Stranded, Tinned (7 x 30)	17	128	104	7.2	13.4	1.4	2000	
		28	Stranded, Topcoat (7 x 36)	68	150	128	5.0	9.1	1.4	2000	
		26	Stranded, Topcoat (7 x 34)	43	145	123	5.6	10.3	1.4	2000	
		24	Stranded, Topcoat (7 x 32)	27	134	114	6.6	12.0	1.4	2000	H-11
		22	Stranded, Topcoat (7 x 30)	17	128	104	7.2	13.4	1.4	2000	
		26	Stranded, Tinned (7 x 34)	43	145	123	5.6	10.3	1.4	2000	
		24	Stranded, Tinned (7 x 32)	27	134	114	6.6	12.0	1.4	2000	
3.96 (.156)	2-24	22	Stranded, Tinned (7 x 30)	17	140	123	4.7	8.5	1.4	2000	H-15
		18	Stranded, Tinned (19 x 30)	7	128	105	5.9	10.9	1.4	2000	
		22	Stranded, Topcoat (7 x 30)	17	140	123	4.7	8.5	1.4	2000	
		18	Stranded, Tinned (7 x 26)	7	128	105	5.9	10.9	1.4	2000	
FLEXTRAN™ HIGH FLEX LIFE CABLE											
2.00 (.079)	2-28	26	Stranded, Topcoat (19 x 38)	52	164	121	7.6	11.5	1.3	2000	H-9
		24	Stranded, Topcoat (19 x 36)	32	148	106	8.2	12.9	1.3	2000	
2.54 (.100)	2-36	26	Stranded, Topcoat (19 x 38)	54	158	131	5.3	9.2	1.4	2000	H-13
		24	Stranded, Topcoat (19 x 36)	34	146	122	6.2	10.7	1.4	2000	
HEAVY-DUTY COMPOSITE CABLE											
2.54 (.100)	2-24	24	Stranded, Overcoat (19 x 36)	31	113	109	8.8	13.0	1.4	2000	H-14

* GS = Ground Signal

† GSG = Ground Signal Ground

† Number of wires at given wire gauge, forming a single conductor

All information contained herein, including illustrations, specifications and dimensions, is believed to be reliable as of the date of publication, but is subject to change without notice. Current sales drawings and specifications are available upon request. Molex makes no claims or warranties as to the application of this product or its suitability or fitness for any particular purpose. Accordingly, it is recommended that each user independently test and evaluate the product for its intended use.

FEATURES AND SPECIFICATIONS

Features and Benefits

- Sizes 10 to 50 circuits
- Tested for insulation resistance
- Bulk cable available on 100, 300, and 500' reels
- To order notched bulk cable, jumpers cut to length or complete cable assemblies, contact Molex

Reference Information

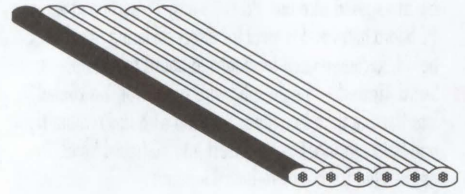
UL File No.: E61522
 UL Style No.: 2678
 CSA File No.: LL61126
 Designed In: Millimeters

Electrical
 Voltage: 150V
 See Electrical Specifications Table
 on Page H-29 for More Information

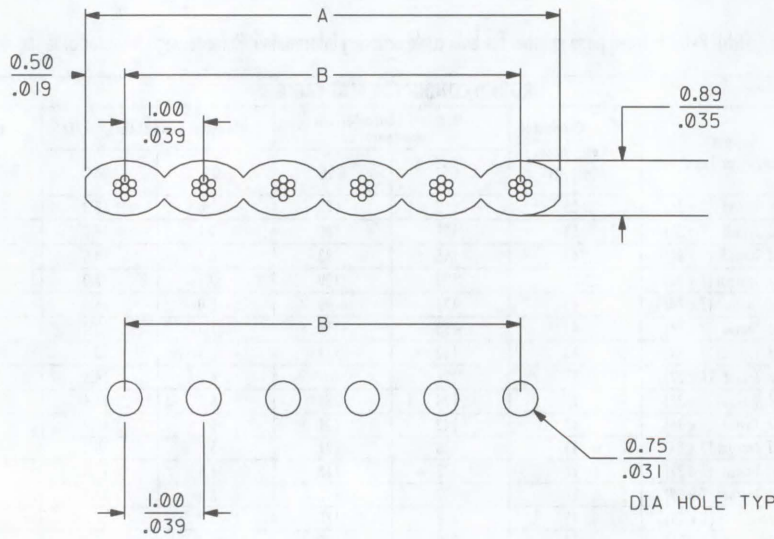
Physical
 Flammability: VW-1
 Operating Temperature: -20 to +105°C
 Insulation: Gray PVC
 Edge Mark: Black

**molex® 1.00mm (.039") Pitch
 Round Conductor Flat Cable**

24500 28 AWG (7 x 36) Stranded, Tinned



CATALOG DRAWING (FOR REFERENCE ONLY)



RECOMMENDED PCB LAYOUT

ORDERING INFORMATION AND DIMENSIONS

For Cable Series No.	Order No.		
	100' Reel	300' Reel	500' Reel
24500-XX	• 82-28-30XX	• 82-28-31XX	• 82-28-32XX
Replace "XX" with number of circuits, 10-50			

Circuits*	Order No.			Dimension	
	100' Reel	300' Reel	500' Reel	A	B
10	82-28-3010		82-28-3210	10.00 (.394)	9.00 (.354)
20	82-28-3020		82-28-3220	20.00 (.787)	19.00 (.748)
24	82-28-3024			24.00 (.945)	23.00 (.906)
40	82-28-3040			40.00 (1.575)	39.00 (1.535)
44	82-28-3044			44.00 (1.732)	43.00 (1.693)
50	82-28-3050	82-28-3150		50.00 (1.969)	49.00 (1.929)

* US Standard Product, available through Molex franchised distributors
 * Other sizes available, contact Molex

FEATURES AND SPECIFICATIONS

Features and Benefits

- Sizes 3 to 68 circuits
- Tested for insulation resistance
- Bulk cable available on 100, 300 and 500' reels
- To order notched bulk cable, jumpers cut to length or complete cable assemblies, contact Molex

Reference Information

UL File No.: E61522
 UL Style No.: 2651
 CSA File No.: LL61126
 Use With: 5360, 70121, 71891, 70625 and 90584
 IDT connectors
 Designed In: Inches

Electrical

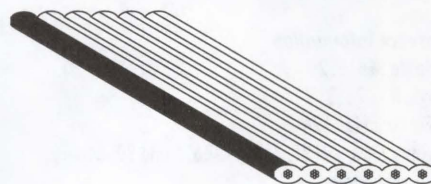
Voltage: 300V
 See Electrical Specifications Table
 on Page H-29 for More Information

Physical

Flammability: VW-1
 Operating Temperature: -20 to +105°C
 Insulation: Gray PVC
 Edge Mark: Black

molex® 1.27mm (.050") Pitch Round Conductor Flat Cable

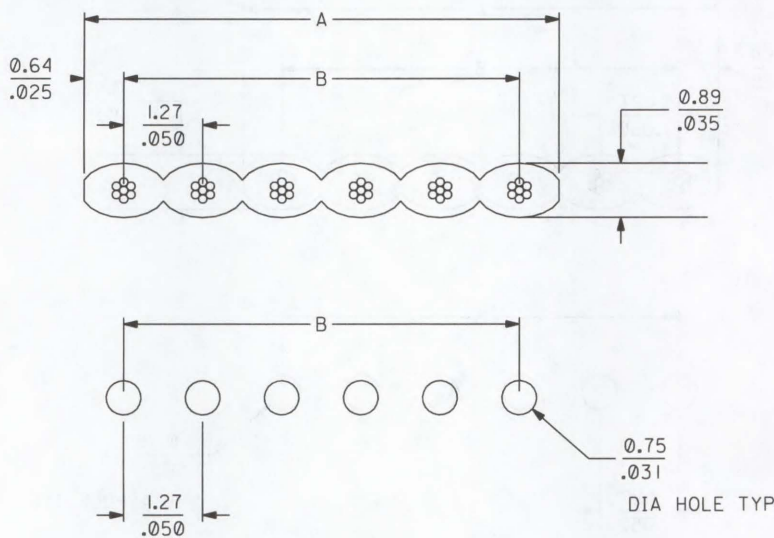
6800 28 AWG (7 x 36) Stranded, Tinned



Ribbon Cable Systems

H

CATALOG DRAWING (FOR REFERENCE ONLY)



RECOMMENDED PCB LAYOUT

ORDERING INFORMATION AND DIMENSIONS

Circuits*	Order No.			Dimension	
	100' Reel	300' Reel	500' Reel	A	B
3	82-28-5703			3.81 (.150)	2.54 (.100)
5	82-28-5705			6.35 (.250)	5.08 (.200)
6	82-28-5706	82-28-5906	82-28-5406	7.62 (.300)	6.35 (.250)
7	82-28-5707	82-28-5907		8.89 (.350)	7.62 (.300)
8		82-28-5908		10.16 (.400)	8.89 (.350)
9	82-28-5709	82-28-5909	82-28-5409	11.43 (.450)	10.16 (.400)
10	82-28-5710	82-28-5910	82-28-5410	12.70 (.500)	11.43 (.450)
12	82-28-5712	82-28-5912		15.24 (.600)	13.97 (.550)
14	82-28-5714	82-28-5914	82-28-5414	17.78 (.700)	16.51 (.650)
15	82-28-5715			19.05 (.750)	17.78 (.700)
16	82-28-5716	82-28-5916	82-28-5416	20.32 (.800)	19.05 (.750)
18	82-28-5718	82-28-5918		22.86 (.900)	21.59 (.850)
20	82-28-5720	82-28-5920	82-28-5420	25.40 (1.000)	24.13 (.950)
21	82-28-5721			26.67 (1.050)	25.40 (1.000)

Circuits*	Order No.			Dimension	
	100' Reel	300' Reel	500' Reel	A	B
22	82-28-5722		82-28-5422	27.94 (1.100)	26.67 (1.050)
24	82-28-5724	82-28-5924	82-28-5424	30.48 (1.200)	29.21 (1.150)
25	82-28-5725	82-28-5925	82-28-5425	31.75 (1.250)	30.48 (1.200)
26	82-28-5726	82-28-5926	82-28-5426	33.02 (1.300)	31.74 (1.250)
30	82-28-5730	82-28-5930	82-28-5430	38.10 (1.500)	36.83 (1.450)
34	82-28-5734	82-28-5934	82-28-5434	43.18 (1.700)	41.91 (1.650)
36	82-28-5736	82-28-5936	82-28-5436	45.72 (1.800)	44.45 (1.750)
37	82-28-5737	82-28-5937	82-28-5437	46.99 (1.850)	45.72 (1.800)
39	82-28-5739			49.53 (1.950)	48.26 (1.900)
40	82-28-5740	82-28-5940	82-28-5440	50.80 (2.000)	49.53 (1.950)
50	82-28-5750	82-28-5950	82-28-5450	63.50 (2.500)	62.23 (2.450)
60	82-28-5760	82-28-5960	82-28-5460	76.20 (3.000)	74.93 (2.950)
64	82-28-5764	82-28-5964	82-28-5464	81.28 (3.200)	80.01 (3.150)
68	82-28-5768	82-28-5968		86.36 (3.400)	85.09 (3.350)

* Other sizes available, contact Molex

FEATURES AND SPECIFICATIONS

Features and Benefits

- Sizes 3 to 68 circuits
- Tested for insulation resistance
- Bulk cable available on 100, 300 and 500' reels
- Tin topcoat provides easy PC board direct termination
- To order notched bulk cable, jumpers cut to length or complete cable assemblies, contact Molex

Reference Information

UL File No.: E61522
 UL Style No.: 2651
 CSA File No.: LL61126
 Use With: 5360, 70121, 71891, 70625 and 90584
 IDT connectors
 Designed In: Inches

Electrical

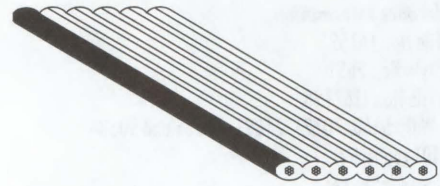
Voltage: 300V
 See Electrical Specifications Table
 on Page H-29 for More Information

Physical

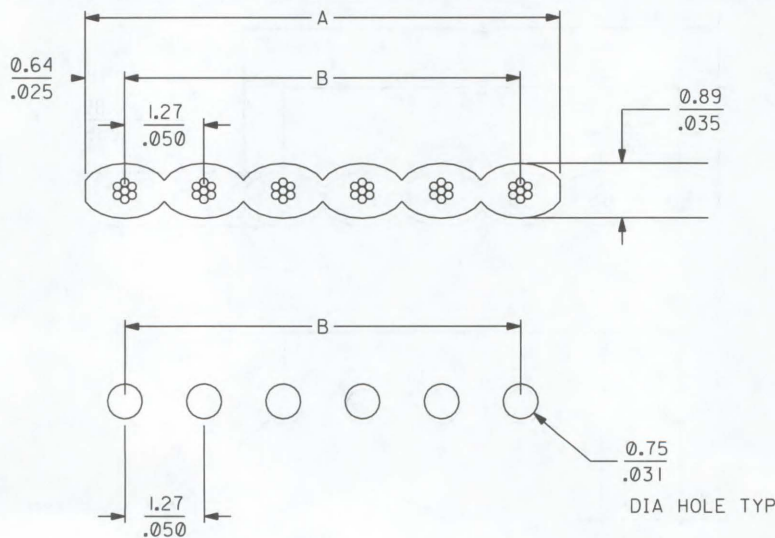
Flammability: VW-1
 Operating Temperature: -20 to +105°C
 Insulation: Gray PVC
 Edge Mark: Black

molex® 1.27mm (.050") Pitch Round Conductor Flat Cable

40158 28 AWG (7 x 36) Stranded, Topcoat



CATALOG DRAWING (FOR REFERENCE ONLY)



RECOMMENDED PCB LAYOUT

ORDERING INFORMATION AND DIMENSIONS

Circuits*	Order No.			Dimension	
	100' Reel	300' Reel	500' Reel	A	B
3			82-28-5603	3.81 (.150)	2.54 (.100)
4			82-28-5604	5.08 (.200)	3.81 (.150)
5		82-28-5305		6.35 (.250)	5.08 (.200)
6	82-28-5506	82-28-5306		7.62 (.300)	6.35 (.250)
8	82-28-5508	82-28-5308	82-28-5608	10.16 (.400)	8.89 (.350)
9		82-28-5309		11.43 (.450)	10.16 (.400)
10	82-28-5510	82-28-5310	82-28-5610	12.70 (.500)	11.43 (.450)
11		82-28-5311		13.97 (.550)	12.70 (.500)
12	82-28-5512	82-28-5312	82-28-5612	15.24 (.600)	13.97 (.550)
14	82-28-5514	82-28-5314	82-28-5614	17.78 (.700)	16.51 (.650)
15		82-28-5315		19.05 (.750)	17.78 (.700)
16	82-28-5516	82-28-5316	82-28-5616	20.32 (.800)	19.05 (.750)
17		82-28-5317		21.59 (.850)	20.32 (.800)
18		82-28-5318		22.86 (.900)	21.59 (.850)

Circuits*	Order No.			Dimension	
	100' Reel	300' Reel	500' Reel	A	B
20	82-28-5520	82-28-5320	82-28-5620	25.40 (1.000)	24.13 (.950)
24	82-28-5524	82-28-5324	82-28-5624	30.48 (1.200)	29.21 (1.150)
25	82-28-5525	82-28-5325	82-28-5625	31.75 (1.250)	30.48 (1.200)
26	82-28-5526	82-28-5326	82-28-5626	33.02 (1.300)	31.75 (1.250)
30	82-28-5530	82-28-5330	82-28-5630	38.10 (1.500)	36.83 (1.450)
34	82-28-5534	82-28-5334	82-28-5634	43.18 (1.700)	41.91 (1.650)
36	82-28-5536	82-28-5336	82-28-5636	45.72 (1.800)	44.45 (1.750)
37	82-28-5537	82-28-5337	82-28-5637	46.99 (1.850)	45.72 (1.800)
40	82-28-5540	82-28-5340	82-28-5640	50.80 (2.000)	49.53 (1.950)
50	82-28-5550	82-28-5350	82-28-5650	63.50 (2.500)	62.23 (2.450)
60	82-28-5560	82-28-5360	82-28-5660	76.20 (3.000)	74.93 (2.950)
64	82-28-5564	82-28-5364	82-28-5664	81.28 (3.200)	80.01 (3.150)
68	82-28-5568	82-28-5368		86.36 (3.400)	85.09 (3.350)

* Other sizes available, contact Molex

FEATURES AND SPECIFICATIONS

Features and Benefits

- Sizes 3 to 64 circuits
- Tested for insulation resistance
- Bulk cable available on 100, 300 and 500' reels
- To order notched bulk cable, jumpers cut to length or complete cable assemblies, contact Molex

Reference Information

UL File No.: E61522
 UL Style No.: 2651
 CSA File No.: LL61126
 Use With: 70625, 70121, 71891 and 90584 IDT connectors
 Designed In: Inches

Electrical

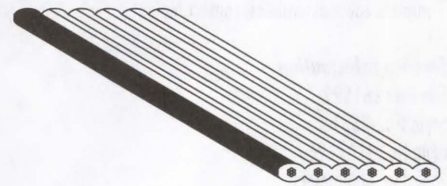
Voltage: 300V
 See Electrical Specifications Table
 on Page H-29 for More Information

Physical

Flammability: VW-1
 Operating Temperature: -20 to +105°C
 Insulation: Gray PVC
 Edge Mark: Black

molex® 1.27mm (.050") Pitch Round Conductor Flat Cable

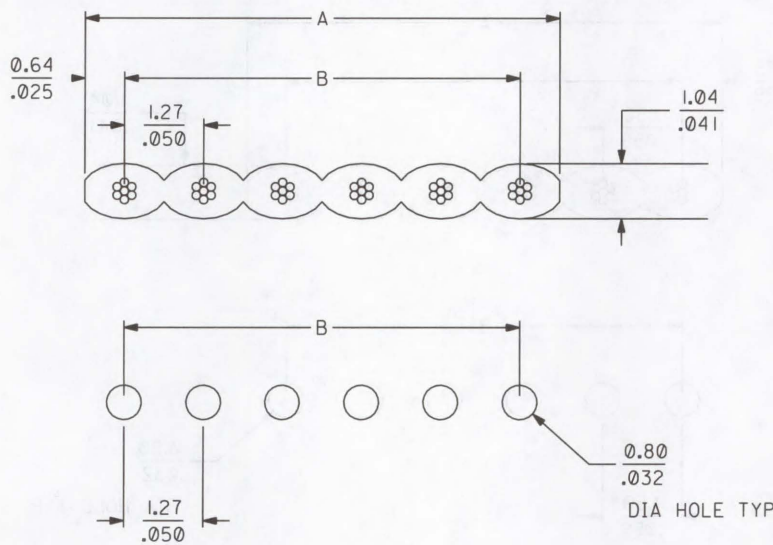
8863 26 AWG (7 x 34) Stranded, Tinned



Ribbon Cable Systems

H

CATALOG DRAWING (FOR REFERENCE ONLY)



RECOMMENDED PCB LAYOUT

ORDERING INFORMATION AND DIMENSIONS

Circuits*	Order No.			Dimension	
	100' Reel	300' Reel	500' Reel	A	B
3	82-26-6803			3.81 (.150)	2.54 (.100)
4	82-26-6804	82-26-7204		5.08 (.200)	3.81 (.150)
5	82-26-6805			6.35 (.250)	5.08 (.200)
8	82-26-6808			10.16 (.400)	8.89 (.350)
9	82-26-6809	82-26-7209		11.43 (.450)	10.16 (.400)
10	82-26-6810		82-26-8010	12.70 (.500)	11.43 (.450)
12	82-26-6812			15.24 (.600)	13.97 (.550)
14	82-26-6814	82-26-7214	82-26-8014	17.78 (.700)	16.51 (.650)
15	82-26-6815	82-26-7215		19.05 (.750)	17.78 (.700)
16	82-26-6816	82-26-7216	82-26-8016	20.32 (.800)	19.05 (.750)
18			82-26-8018	22.86 (.900)	21.59 (.850)
20	82-26-6820	82-26-7220	82-26-8020	25.40 (1.000)	24.13 (.950)
24	82-26-6824	82-26-7224	82-26-8024	30.48 (1.200)	29.21 (1.150)

Circuits*	Order No.			Dimension	
	100' Reel	300' Reel	500' Reel	A	B
25	82-26-6825	82-26-7225	82-26-8025	31.75 (1.250)	30.48 (1.200)
26	82-26-6826	82-26-7226	82-26-8026	33.02 (1.300)	31.74 (1.250)
30	82-26-6830	82-26-7230	82-26-8030	38.10 (1.500)	36.83 (1.450)
34	82-26-6834	82-26-7234	82-26-8034	43.18 (1.700)	41.91 (1.650)
36	82-26-6836	82-26-7236		45.72 (1.800)	44.45 (1.750)
37	82-26-6837	82-26-7237		46.99 (1.850)	45.72 (1.800)
40	82-26-6840	82-26-7240	82-26-8040	50.80 (2.000)	49.53 (1.950)
42	82-26-6842	82-26-7242		53.34 (2.100)	52.07 (2.050)
44	82-26-6844			55.88 (2.200)	54.61 (2.150)
50	82-26-6850	82-26-7250	82-26-8050	63.50 (2.500)	62.23 (2.450)
60		82-26-7260	82-26-8060	76.20 (3.000)	74.93 (2.950)
64				81.28 (3.200)	80.01 (3.150)

* Other sizes available, contact Molex

FEATURES AND SPECIFICATIONS

Features and Benefits

- Sizes 2 to 30 circuits, contact Molex for 29 to 30 circuits
- Tested for insulation resistance
- Bulk cable available on 100, 300 and 500' reels
- Tin topcoat provides easy PC board direct termination
- To order notched bulk cable, jumpers cut to length or complete cable assemblies, contact Molex

Reference Information

UL File No.: E61522
 UL Style No.: 2651
 CSA File No.: LL61126
 Designed In: Millimeters

Electrical

Voltage: 300V
 See Electrical Specifications Table on Page H-29 for More Information

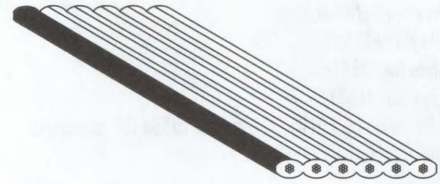
Physical

Flammability: VW-1
 Operating Temperature: -20 to +105°C
 Insulation: Gray PVC
 Edge Mark: Black

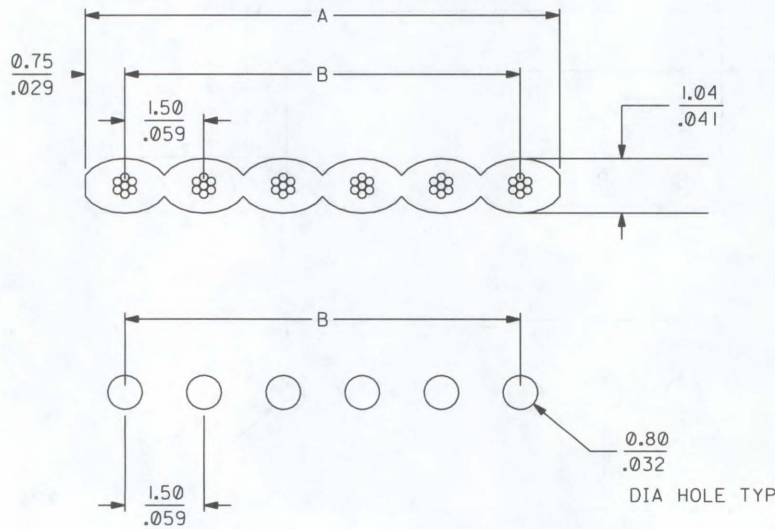


1.50mm (.059") Pitch Round Conductor Flat Cable

24483 26 AWG (7 x 34) Stranded, Topcoat



CATALOG DRAWING (FOR REFERENCE ONLY)



RECOMMENDED PCB LAYOUT

ORDERING INFORMATION AND DIMENSIONS

For Cable Series No.	Order No.		
	100' Reel	300' Reel	500' Reel
24483-XX	• 82-26-38XX	• 82-26-40XX	• 82-26-39XX
Replace "XX" with number of circuits, 04-15			

Circuits*	Dimension	
	A	B
2	3.00 (.118)	1.50 (.059)
3	4.50 (.177)	3.00 (.118)
4	6.00 (.236)	4.50 (.177)
5	7.50 (.295)	6.00 (.236)
6	9.00 (.354)	7.50 (.295)
7	10.50 (.413)	9.00 (.354)
8	12.00 (.472)	10.50 (.413)
9	13.50 (.531)	12.00 (.472)
10	15.00 (.590)	13.50 (.531)
11	16.50 (.649)	15.00 (.590)
12	18.00 (.708)	16.50 (.649)
13	19.50 (.767)	18.00 (.708)

Circuits*	Dimension	
	A	B
14	21.00 (.826)	19.50 (.767)
15	22.50 (.885)	21.00 (.826)
16	24.00 (.945)	22.50 (.886)
17	25.50 (1.004)	24.00 (.945)
18	27.00 (1.063)	25.50 (1.004)
19	28.50 (1.122)	27.00 (1.063)
20	30.00 (1.181)	28.50 (1.122)
21	31.50 (1.240)	30.00 (1.181)
22	33.00 (1.299)	31.50 (1.240)
23	34.50 (1.358)	33.00 (1.299)
24	36.00 (1.417)	34.50 (1.358)
25	37.50 (1.476)	36.00 (1.417)
26	39.00 (1.535)	37.50 (1.476)
27	40.50 (1.595)	39.00 (1.535)
28	42.00 (1.654)	40.50 (1.595)
29	43.50 (1.713)	42.00 (1.654)
30	45.00 (1.772)	43.50 (1.713)

* US Standard Product, available through Molex franchised distributors
 * Contact Molex for 29 and 30 circuits

FEATURES AND SPECIFICATIONS

Features and Benefits

- Sizes 2 to 28 circuits
- Tested for insulation resistance
- Tin topcoat provides easy PC board direct termination
- Bulk cable available on 100, 300 and 500' reels
- To order notched bulk cable, jumpers cut to length or complete cable assemblies, contact Molex

Reference Information

UL File No.: E61522
 UL Style No.: 2651
 CSA File No.: LL61126
 Use With: 30452 and 52484 IDT connectors
 Designed In: Millimeters

Electrical

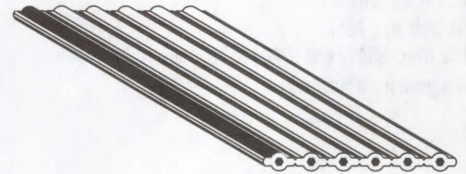
Voltage: 300V
 See Electrical Specifications Table
 on Page H-29 for More Information

Physical

Flammability: VW-1
 Operating Temperature: -20 to +105°C
 Insulation: Gray PVC
 Edge Mark: Black

molex® 2.00mm (.079") Pitch Round Conductor Flat Cable

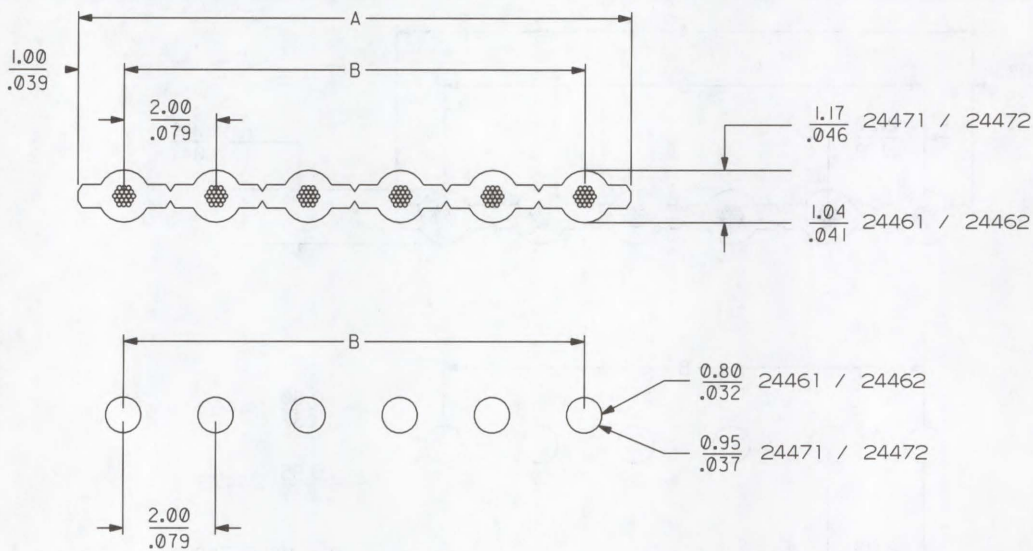
- 24471** 24 AWG (7 x 32) Stranded, Tinned
- 24472** 24 AWG (7 x 32) Stranded, Topcoat
- 24461** 26 AWG (7 x 34) Stranded, Tinned
- 24462** 26 AWG (7 x 34) Stranded, Topcoat



Ribbon Cable Systems

H

CATALOG DRAWING (FOR REFERENCE ONLY)



RECOMMENDED PCB LAYOUT

DIA HOLE TYP

ORDERING INFORMATION AND DIMENSIONS

For Cable Series No.	Order No.		
	100' Reel	300' Reel	500' Reel
24471-XX	• 82-24-41XX	• 82-24-42XX	• 82-24-43XX
24472-XX	• 82-24-44XX	• 82-24-45XX	• 82-24-46XX
24461-XX	• 82-26-41XX	• 82-26-42XX	• 82-26-43XX
24462-XX	• 82-26-44XX	• 82-26-45XX	• 82-26-46XX

Replace "XX" with number of circuits, 02-28

Circuits	Dimension	
	A	B
2	4.00 (.157)	2.00 (.079)
3	6.00 (.236)	4.00 (.157)
4	8.00 (.315)	6.00 (.236)
5	10.00 (.394)	8.00 (.315)
6	12.00 (.472)	10.00 (.394)
7	14.00 (.551)	12.00 (.472)
8	16.00 (.630)	14.00 (.551)
9	18.00 (.709)	16.00 (.630)
10	20.00 (.787)	18.00 (.709)

Circuits	Dimension	
	A	B
11	22.00 (.866)	20.00 (.787)
12	24.00 (.945)	22.00 (.866)
13	26.00 (1.024)	24.00 (.945)
14	28.00 (1.102)	26.00 (1.024)
15	30.00 (1.181)	28.00 (1.102)
16	32.00 (1.260)	30.00 (1.181)
17	34.00 (1.339)	32.00 (1.260)
18	36.00 (1.417)	34.00 (1.339)
19	38.00 (1.496)	36.00 (1.417)
20	40.00 (1.575)	38.00 (1.496)
21	42.00 (1.654)	40.00 (1.575)
22	44.00 (1.732)	42.00 (1.654)
23	46.00 (1.811)	44.00 (1.732)
24	48.00 (1.890)	46.00 (1.811)
25	50.00 (1.969)	48.00 (1.890)
26	52.00 (2.047)	50.00 (1.969)
27	54.00 (2.126)	52.00 (2.047)
28	56.00 (2.205)	54.00 (2.126)

• US Standard Product, available through Molex franchised distributors

FEATURES AND SPECIFICATIONS

Features and Benefits

- Sizes 2 to 28 circuits
- High performance flex life alloy prevents conductor fracture at solder joints
- Increased cable flexibility
- Tin topcoat provides easy PC board direct termination
- Bulk cable available on 100, 300 and 500' reels
- To order notched bulk cable, jumpers cut to length or complete assemblies, contact Molex

Electrical

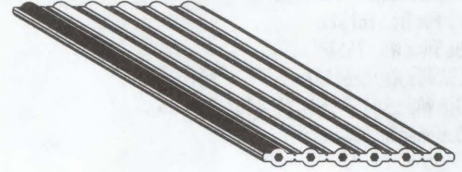
Voltage: 300V
See Electrical Specifications Table on Page H-29 for More Information

Physical

Flammability: VW-1
Operating Temperature: -20 to +105°C
Insulation: Dark gray PVC
Edge Mark: Blue

molex® 2.00mm (.079") Pitch Flextran™ High Flex Life Cable

24463 26 AWG (19 x 38) Stranded, Topcoat
24473 24 AWG (19 x 36) Stranded, Topcoat



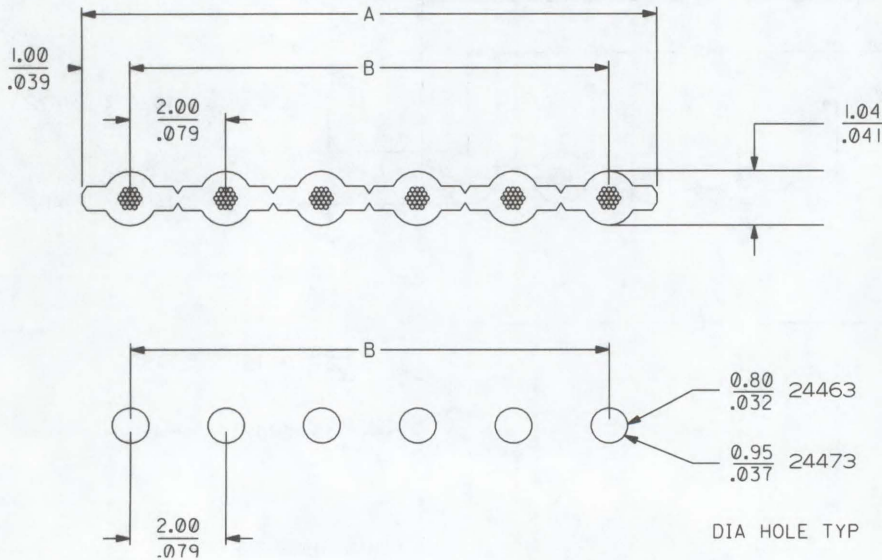
Reference Information

UL File No.: E61522
UL Style No.: 2651
Use With.: 30452 and 52484 IDT connectors
Designed In: Millimeters

Ribbon Cable Systems

H

CATALOG DRAWING (FOR REFERENCE ONLY)



ORDERING INFORMATION AND DIMENSIONS

For Cable Series No.	Order No.		
	100' Reel	300' Reel	500' Reel
24463-XX	• 82-26-30XX	• 82-26-31XX	• 82-26-32XX
24473-XX	• 82-24-34XX	• 82-24-35XX	• 82-24-36XX

Replace "XX" with number of circuits, 02-28

Circuits	Dimension	
	A	B
2	4.00 (.157)	2.00 (.079)
3	6.00 (.236)	4.00 (.157)
4	8.00 (.315)	6.00 (.236)
5	10.00 (.394)	8.00 (.315)
6	12.00 (.472)	10.00 (.394)
7	14.00 (.551)	12.00 (.472)
8	16.00 (.630)	14.00 (.551)
9	18.00 (.709)	16.00 (.630)
10	20.00 (.787)	18.00 (.709)
11	22.00 (.866)	20.00 (.787)
12	24.00 (.945)	22.00 (.866)

Circuits	Dimension	
	A	B
13	26.00 (1.024)	24.00 (.945)
14	28.00 (1.102)	26.00 (1.024)
15	30.00 (1.181)	28.00 (1.102)
16	32.00 (1.260)	30.00 (1.181)
17	34.00 (1.339)	32.00 (1.260)
18	36.00 (1.417)	34.00 (1.339)
19	38.00 (1.496)	36.00 (1.417)
20	40.00 (1.575)	38.00 (1.496)
21	42.00 (1.654)	40.00 (1.929)
22	44.00 (1.732)	42.00 (1.654)
23	46.00 (1.811)	44.00 (1.732)
24	48.00 (1.890)	46.00 (1.811)
25	50.00 (1.969)	48.00 (1.890)
26	52.00 (2.047)	50.00 (1.969)
27	54.00 (2.126)	52.00 (2.047)
28	56.00 (2.205)	54.00 (2.126)

• US Standard Product, available through Molex franchised distributors

FEATURES AND SPECIFICATIONS

Features and Benefits

- Sizes 2 to 30 circuits, contact Molex for 29 and 30 circuits
- Tested for insulation resistance
- Tin topcoat provides easy PCB direct termination
- Bulk cable available on 100, 300 and 500' reels
- To order notched bulk cable, jumpers cut to length or complete cable assemblies, contact Molex

Reference Information

UL File No.: E61522
 UL Style No.: 2641
 CSA File No.: LL61126
 Use With: 42219 and 42254 IDT Connectors
 Designed In: Millimeters

Electrical

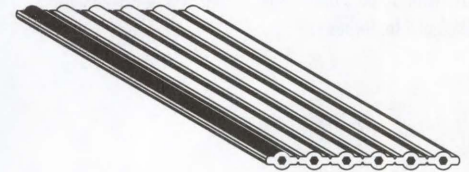
Voltage: 300V
 See Electrical Specifications Table
 on Page H-29 for More Information

Physical

Flammability: VW-1
 Operating Temperature: -20 to +105°C
 Insulation: Gray PVC
 Edge Mark: Black

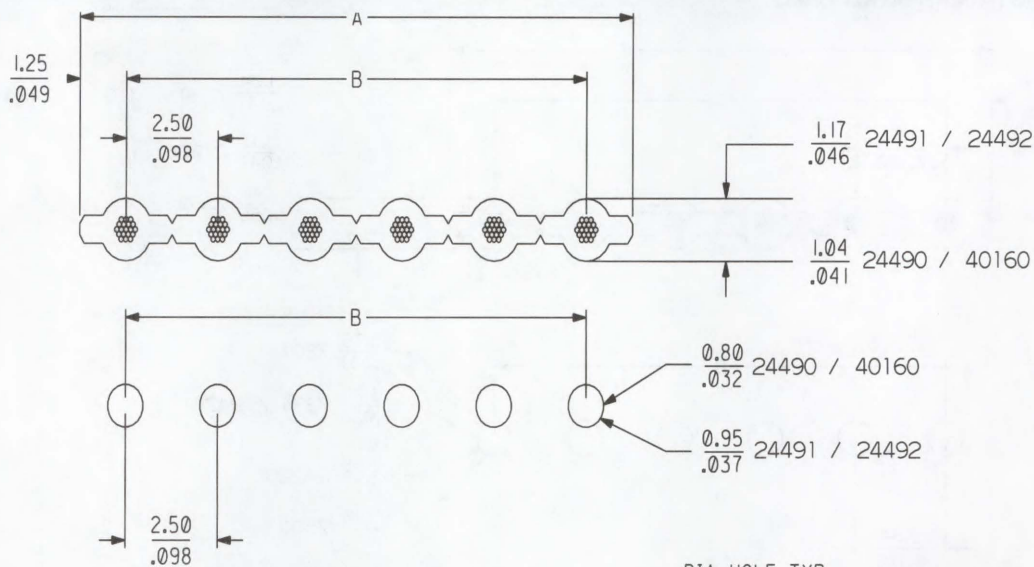
molex® 2.50mm (.098") Pitch Round Conductor Flat Cable

- 24491** 24 AWG (7 x 32) Stranded, Tinned
- 24492** 24 AWG (7 x 32) Stranded, Topcoat
- 24490** 26 AWG (7 x 34) Stranded, Tinned
- 40160** 26 AWG (7 x 34) Stranded, Topcoat



Ribbon Cable Systems

CATALOG DRAWING (FOR REFERENCE ONLY)



RECOMMENDED PCB LAYOUT

DIA HOLE TYP

ORDERING INFORMATION AND DIMENSIONS

For Cable Series No.	Order No.		
	100' Reel	300' Reel	500' Reel
24491-XX	• 82-24-50XX	• 82-24-51XX	• 82-24-52XX
24492-XX	• 82-24-85XX	• 82-24-86XX	• 82-24-87XX
24490-XX	• 82-26-35XX	• 82-26-36XX	• 82-26-37XX
40160-XX	• 82-26-55XX	• 82-26-81XX	• 82-26-82XX

Replace "XX" with number of circuits, 02-30

Circuits	Dimension	
	A	B
2	5.00 (.197)	2.50 (.098)
3	7.50 (.295)	5.00 (.197)
4	10.00 (.394)	7.50 (.295)
5	12.50 (.492)	10.00 (.394)
6	15.00 (.591)	12.50 (.492)
7	17.50 (.689)	15.00 (.591)
8	20.00 (.787)	17.50 (.689)
9	22.50 (.886)	20.00 (.787)
10	25.00 (.984)	22.50 (.886)
11	27.50 (1.083)	25.00 (.984)

Circuits	Dimension	
	A	B
12	30.00 (1.181)	27.50 (1.083)
13	32.50 (1.280)	30.00 (1.181)
14	35.00 (1.378)	32.50 (1.280)
15	37.50 (1.476)	35.00 (1.378)
16	40.00 (1.575)	37.50 (1.476)
17	42.50 (1.673)	40.00 (1.575)
18	45.00 (1.772)	42.50 (1.673)
19	47.50 (1.870)	45.00 (1.772)
20	50.00 (1.968)	47.50 (1.870)
21	52.50 (2.067)	50.00 (1.968)
22	55.00 (2.165)	52.50 (2.067)
23	57.50 (2.264)	55.00 (2.165)
24	60.00 (2.362)	57.50 (2.264)
25	62.50 (2.461)	60.00 (2.362)
26	65.00 (2.559)	62.50 (2.461)
27	67.50 (2.657)	65.00 (2.559)
28	70.00 (2.756)	67.50 (2.657)
29	72.50 (2.854)	70.00 (2.756)
30	75.00 (2.953)	72.50 (2.854)

• US Standard Product, available through Molex franchised distributors

FEATURES AND SPECIFICATIONS

Features and Benefits

- Sizes 2 to 36 circuits
- Tested for insulation resistance
- Bulk cable available on 100, 300 and 500' reels
- To order notched bulk cable, jumpers cut to length or complete cable assemblies, contact Molex

Reference Information

UL File No.: E61522
 UL Style No.: 2651
 CSA File No.: LL61126
 Use With: 7720, 70400, 70475, and 40555 IDT connectors
 Designed In: Inches

Electrical

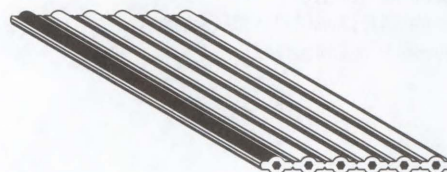
Voltage: 300V
 See Electrical Specifications Table
 on Page H-29 for More Information

Physical

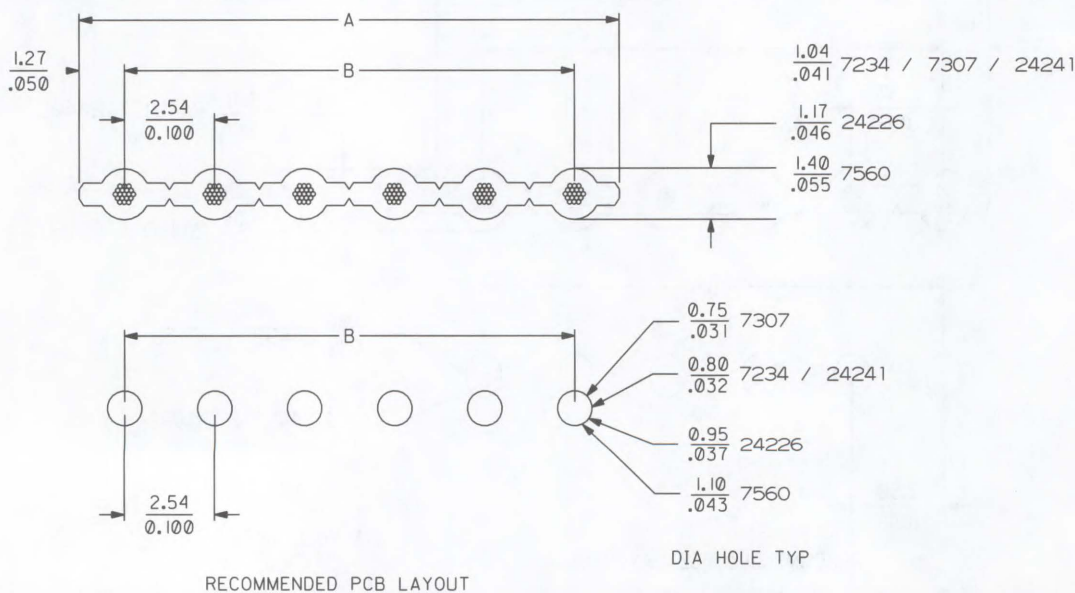
Flammability: VW-1
 Operating Temperature: -20 to +105°C
 Insulation: Gray PVC
 Edge Mark: Black

molex® 2.54mm (.100") Pitch Round Conductor Flat Cable

- 7307** 28 AWG (7 x 36) Stranded, Tinned
7234 26 AWG (1 x 26) Solid, Tinned
24241 26 AWG (7 x 34) Stranded, Tinned
24226 24 AWG (7 x 32) Stranded, Tinned
7560 22 AWG (7 x 30) Stranded, Tinned



CATALOG DRAWING (FOR REFERENCE ONLY)



ORDERING INFORMATION AND DIMENSIONS

For Cable Series No.	Order No.		
	100' Reel	300' Reel	500' Reel
7234-XX	82-26-57XX	82-26-59XX	82-26-66XX
7307-XX	82-28-58XX	• 82-28-6XX2	• 82-28-6XX5
7560-XX	• 82-22-61XX	• 82-22-62XX	• 82-22-71XX
24241-XX	• 82-26-56XX	• 82-26-53XX	• 82-26-75XX
24226-XX	• 82-24-77XX	• 82-24-73XX	• 82-24-55XX

Replace "XX" with number of circuits, 02-36

Circuits	Dimension	
	A	B
2	5.08 (.200)	2.54 (.100)
3	7.62 (.300)	5.08 (.200)
4	10.16 (.400)	7.62 (.300)
5	12.70 (.500)	10.16 (.400)
6	15.24 (.600)	12.70 (.500)
7	17.78 (.700)	15.24 (.600)
8	20.32 (.800)	17.78 (.700)

Circuits	Dimension	
	A	B
9	22.86 (.900)	20.32 (.800)
10	25.40 (1.000)	22.86 (.900)
11	27.94 (1.100)	25.40 (1.000)
12	30.48 (1.200)	27.94 (1.100)
13	33.02 (1.300)	30.48 (1.200)
14	35.56 (1.400)	33.02 (1.300)
15	38.10 (1.500)	35.56 (1.400)
16	40.64 (1.600)	38.10 (1.500)
17	43.18 (1.700)	40.64 (1.600)
18	45.72 (1.800)	43.18 (1.700)
19	48.26 (1.900)	45.72 (1.800)
20	50.80 (2.000)	48.26 (1.900)
21	53.34 (2.100)	50.80 (2.000)
22	55.88 (2.200)	53.34 (2.100)
23	58.42 (2.300)	55.88 (2.200)
24	60.96 (2.400)	58.42 (2.300)

Circuits	Dimension	
	A	B
25	63.50 (2.500)	60.96 (2.400)
26	66.04 (2.600)	63.50 (2.500)
27	68.58 (2.700)	66.04 (2.600)
28	71.12 (2.800)	68.58 (2.700)
29	73.66 (2.900)	71.12 (2.800)
30	76.20 (3.000)	73.66 (2.900)
31	78.74 (3.100)	76.20 (3.000)
32	81.28 (3.200)	78.74 (3.100)
33	83.82 (3.300)	81.28 (3.200)
34	86.36 (3.400)	83.82 (3.300)
35	88.90 (3.500)	86.36 (3.400)
36	91.44 (3.600)	88.90 (3.500)

• US Standard Product, available through Molex franchised distributors

FEATURES AND SPECIFICATIONS

Features and Benefits

- Sizes 2 to 36 circuits
- Tested for insulation resistance
- Tin topcoat provides easy PCB card direct termination
- Bulk cable available on 100, 300 and 500' reels
- To order notched bulk cable, jumpers cut to length or complete cable assemblies, contact Molex

Reference Information

UL File No.: E61522
 UL Style No.: 2651
 CSA File No.: LL61126
 Use With: 40555, 7720, 70400 and 70475 IDT connectors
 Designed In: Inches

Electrical

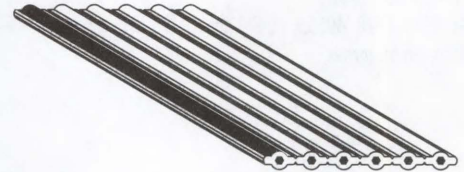
Voltage: 300V
 See Electrical Specifications Table
 on Page H-29 for More Information

Physical

Flammability: VW-1
 Operating Temperature: -20 to +105°C
 Insulation: Gray PVC
 Edge Mark: Black

molex® 2.54mm (.100") Pitch Round Conductor Flat Cable

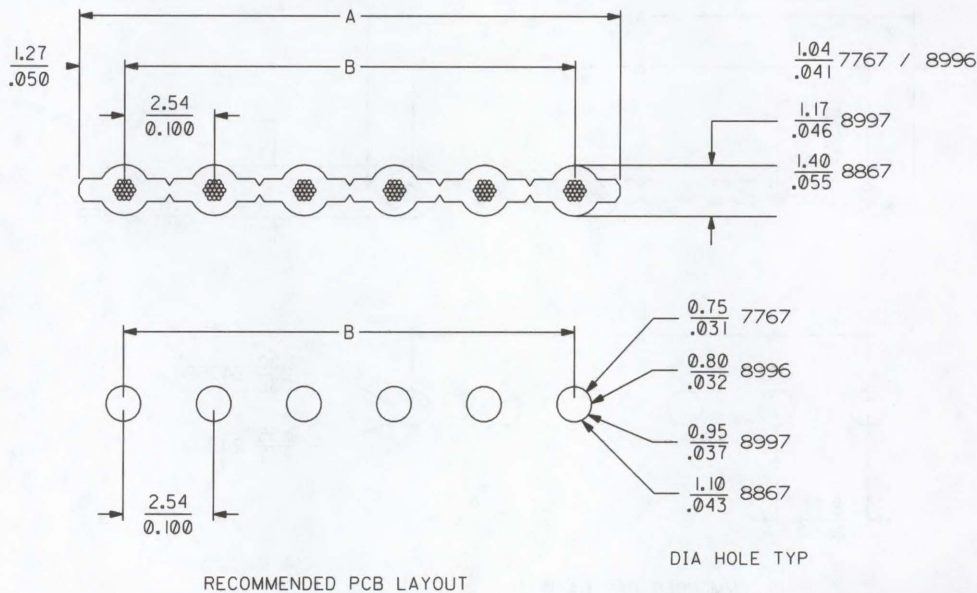
- 7767** 28 AWG (7 x 36) Stranded, Topcoat
- 8996** 26 AWG (7 x 34) Stranded, Topcoat
- 8997** 24 AWG (7 x 32) Stranded, Topcoat
- 8867** 22 AWG (7 x 30) Stranded, Topcoat



Ribbon Cable Systems

H

CATALOG DRAWING (FOR REFERENCE ONLY)



ORDERING INFORMATION AND DIMENSIONS

For Cable Series No.	Order No.		
	100' Reel	300' Reel	500' Reel
7767-XX	• 82-28-6XX1	• 82-28-6XX3	• 82-28-6XX8
8996-XX	• 82-26-58XX	• 82-26-71XX	• 82-26-76XX
8997-XX	• 82-24-59XX	• 82-24-60XX	• 82-24-65XX
8867-XX	• 82-22-60XX	• 82-22-65XX	• 82-22-74XX

Replace "XX" with number of circuits, 02-36

Circuits	Dimension	
	A	B
2	5.08 (.200)	2.54 (.100)
3	7.62 (.300)	5.08 (.200)
4	10.16 (.400)	7.62 (.300)
5	12.70 (.500)	10.16 (.400)
6	15.24 (.600)	12.70 (.500)
7	17.78 (.700)	15.24 (.600)
8	20.32 (.800)	17.78 (.700)
9	22.86 (.900)	20.32 (.800)

Circuits	Dimension	
	A	B
10	25.40 (1.000)	22.86 (.900)
11	27.94 (1.100)	25.40 (1.000)
12	30.48 (1.200)	27.94 (1.100)
13	33.02 (1.300)	30.48 (1.200)
14	35.56 (1.400)	33.02 (1.300)
15	38.10 (1.500)	35.56 (1.400)
16	40.64 (1.600)	38.10 (1.500)
17	43.18 (1.700)	40.64 (1.600)
18	45.72 (1.800)	43.18 (1.700)
19	48.26 (1.900)	45.72 (1.800)
20	50.80 (2.000)	48.26 (1.900)
21	53.34 (2.100)	50.80 (2.000)
22	55.88 (2.200)	53.34 (2.100)
23	58.42 (2.300)	55.88 (2.200)
24	60.96 (2.400)	58.42 (2.300)
25	63.50 (2.500)	60.96 (2.400)

Circuits	Dimension	
	A	B
26	66.04 (2.600)	63.50 (2.500)
27	68.58 (2.700)	66.04 (2.600)
28	71.12 (2.800)	68.58 (2.700)
29	73.66 (2.900)	71.12 (2.800)
30	76.20 (3.000)	73.66 (2.900)
31	78.74 (3.100)	76.20 (3.000)
32	81.28 (3.200)	78.74 (3.100)
33	83.82 (3.300)	81.28 (3.200)
34	86.36 (3.400)	83.82 (3.300)
35	88.90 (3.500)	86.36 (3.400)
36	91.44 (3.600)	88.90 (3.500)

• US Standard Product, available through Molex franchised distributors

FEATURES AND SPECIFICATIONS

Features and Benefits

- Sizes 2 to 36 circuits
- High-performance flex life alloy prevents conductor fracture at solder joints
- Increased cable flexibility
- Tin topcoat provides easy PC board direct termination
- For notched bulk cable, jumpers cut to length or complete cable assemblies, contact Molex

Reference Information

UL File No.: E61522
 UL Style No.: 2651
 Use With: 7720, 40555, 70400 and 70475 IDT connectors
 Designed In: Inches

Electrical

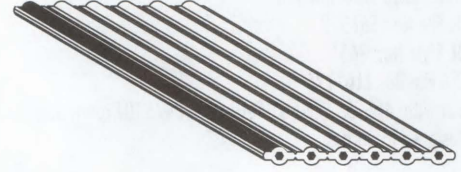
Voltage: 300V
 See Electrical Specifications Table on Page H-29 for More Information

Physical

Flammability: VW-1
 Operating Temperature: -20 to +105°C
 Insulation: Dark gray PVC
 Edge Mark: Blue

molex® 2.54mm (.100") Pitch Flextran™ High Flex Life Cable

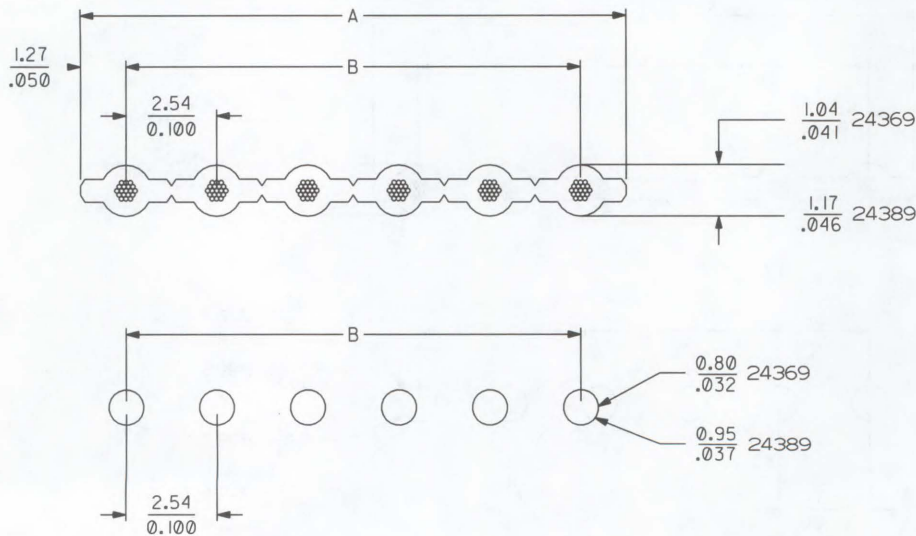
24369 26 AWG (19 x 38) Stranded, Topcoat
24389 24 AWG (19 x 36) Stranded, Topcoat



Ribbon Cable Systems

H

CATALOG DRAWING (FOR REFERENCE ONLY)



DIA HOLE TYP

RECOMMENDED PCB LAYOUT

ORDERING INFORMATION AND DIMENSIONS

For Cable Series No.	Order No.		
	100' Reel	300' Reel	500' Reel
24369-XX	• 82-26-62XX	• 82-26-60XX	• 82-26-65XX
24389-XX	• 82-24-80XX	• 82-24-81XX	• 82-24-82XX

Replace "XX" with number of circuits, 02-36

Circuits	Dimension	
	A	B
2	5.08 (.200)	2.54 (.100)
3	7.62 (.300)	5.08 (.200)
4	10.16 (.400)	7.62 (.300)
5	12.70 (.500)	10.16 (.400)
6	15.24 (.600)	12.70 (.500)
7	17.78 (.700)	15.24 (.600)
8	20.32 (.800)	17.78 (.700)
9	22.86 (.900)	20.32 (.800)
10	25.40 (1.000)	22.86 (.900)
11	27.94 (1.100)	25.40 (1.000)

Circuits	Dimension	
	A	B
12	30.48 (1.200)	27.94 (1.100)
13	33.02 (1.300)	30.48 (1.200)
14	35.56 (1.400)	33.02 (1.300)
15	38.10 (1.500)	35.56 (1.400)
16	40.64 (1.600)	38.10 (1.500)
17	43.18 (1.700)	40.64 (1.600)
18	45.72 (1.800)	43.18 (1.700)
19	48.26 (1.900)	45.72 (1.800)
20	50.80 (2.000)	48.26 (1.900)
21	53.34 (2.100)	50.80 (2.000)
22	55.88 (2.200)	53.34 (2.100)
23	58.42 (2.300)	55.88 (2.200)
24	60.96 (2.400)	58.42 (2.300)
25	63.50 (2.500)	60.96 (2.400)
26	66.04 (2.600)	63.50 (2.500)
27	68.58 (2.700)	66.04 (2.600)

Circuits	Dimension	
	A	B
28	71.12 (2.800)	68.58 (2.700)
29	73.66 (2.900)	71.12 (2.800)
30	76.20 (3.000)	73.66 (2.900)
31	78.74 (3.100)	76.20 (3.000)
32	81.28 (3.200)	78.74 (3.100)
33	83.82 (3.300)	81.28 (3.200)
34	86.36 (3.400)	83.82 (3.300)
35	88.90 (3.500)	86.36 (3.400)
36	91.44 (3.600)	88.90 (3.500)

• US Standard Product, available through Molex franchised distributors

FEATURES AND SPECIFICATIONS

Features and Benefits

- Sizes 2 to 24 circuits
- Tough primary insulation resists cut/melt-through
- Tested for insulation resistance
- Tin topcoat provides easy PC board direct termination
- Bulk cable available in 100, 300 and 500' reels
- For notched bulk cable, jumpers cut to length or complete cable assemblies, contact Molex

Reference Information

Use With: 70400, 70475, 7720 and 40555 IDT connectors
Designed In: Inches

Electrical

See Electrical Specifications Table
on Page H-29 for More Information

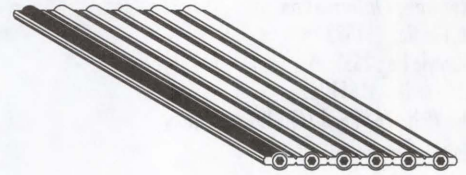
Physical

Flammability: VW-1
Operating Temperature: -20 to +105°C
Insulation: Primary—Orange irradiated PVC
Secondary—Tan PVC
Edge Mark: Black



2.54mm (.100") Pitch Heavy Duty Composite Cable

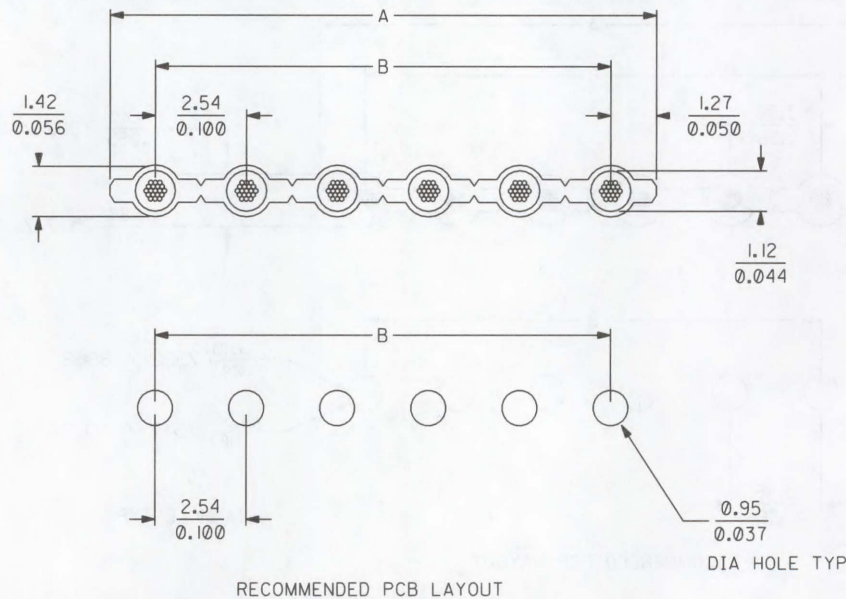
24327 24 AWG (19 x 36) Stranded,
Overcoat Pre-Insulated



Ribbon Cable Systems

H

CATALOG DRAWING (FOR REFERENCE ONLY)



ORDERING INFORMATION AND DIMENSIONS

For Cable Series No.	Order No.		
	100' Reel	300' Reel	500' Reel
24327-XX	• 82-24-84XX	• 82-24-79XX	• 82-24-75XX
Replace "XX" with number of circuits, 02-24			

Circuits	Dimension	
	A	B
2	5.08 (.200)	2.54 (.100)
3	7.62 (.300)	5.08 (.200)
4	10.16 (.400)	7.62 (.300)
5	12.70 (.500)	10.16 (.400)
6	15.24 (.600)	12.70 (.500)
7	17.78 (.700)	15.24 (.600)
8	20.32 (.800)	17.78 (.700)
9	22.86 (.900)	20.32 (.800)
10	25.40 (1.000)	22.86 (.900)

Circuits	Dimension	
	A	B
11	27.94 (1.100)	25.40 (1.000)
12	30.48 (1.200)	27.94 (1.100)
13	33.02 (1.300)	30.48 (1.200)
14	35.56 (1.400)	33.02 (1.300)
15	38.10 (1.500)	35.56 (1.400)
16	40.64 (1.600)	38.10 (1.500)
17	43.18 (1.700)	40.64 (1.600)
18	45.72 (1.800)	43.18 (1.700)
19	48.26 (1.900)	45.72 (1.800)
20	50.80 (2.000)	48.26 (1.900)
21	53.34 (2.100)	50.80 (2.000)
22	55.88 (2.200)	53.34 (2.100)
23	58.42 (2.300)	55.88 (2.200)
24	60.96 (2.400)	58.42 (2.300)

• US Standard Product, available through Molex franchised distributors

FEATURES AND SPECIFICATIONS

Features and Benefits

- Sizes 2 to 24 circuits
- Tested for insulation resistance
- Tin topcoat provides easy PC board direct termination
- Bulk cable available on 100, 300, and 500' reels
- To order notched bulk cable, jumpers cut to length or complete cable assemblies, contact Molex

Reference Information

UL File No.: E61522
 UL Style No.: 2651
 CSA File No.: LL61126
 Use With: 7674 and 7675 IDT connectors
 Designed In: Inches

Electrical

Voltage: 300V
 See Electrical Specifications Table
 on Page H-29 for More Information

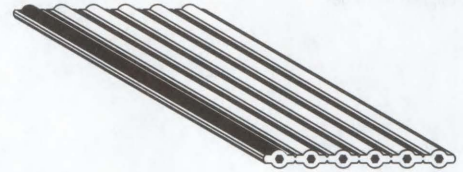
Physical

Flammability: VW-1
 Operating Temperature: -20 to +105°C
 Insulation: Gray PVC
 Edge Mark: Black



3.96mm (.156") Pitch Round Conductor Flat Cable

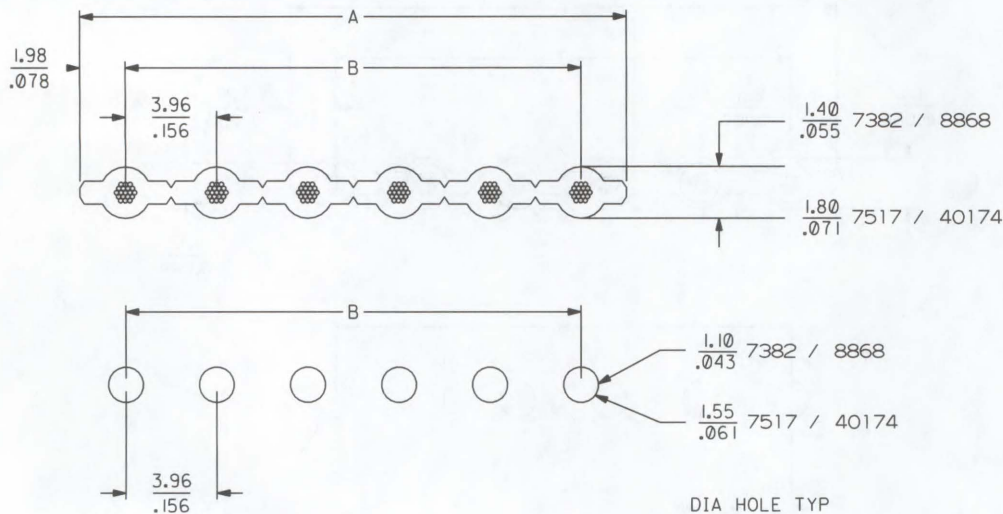
- 7382** 22 AWG (7 x 30) Stranded, Tinned
- 7517** 18 AWG (19 x 30) Stranded, Tinned
- 40174** 18 AWG (7 x 26) Stranded, Tinned
- 8868** 22 AWG (7 x 30) Stranded, Topcoat



Ribbon Cable Systems

H

CATALOG DRAWING (FOR REFERENCE ONLY)



RECOMMENDED PCB LAYOUT

ORDERING INFORMATION AND DIMENSIONS

For Cable Series No.	Order No.		
	100' Reel	300' Reel	500' Reel
7382-XX	• 82-22-58XX	• 82-22-63XX	• 82-22-73XX
7517-XX	• 82-18-5XX1	• 82-18-5XX2	• 82-18-5XX3*
40174-XX	• 82-18-60XX	• 82-18-61XX	• 82-18-62XX*
8868-XX	• 82-22-59XX	• 82-22-67XX	• 82-22-68XX

Replace "XX" with number of circuits, 02-24

Circuits	Dimension	
	A	B
2	7.93 (.312)	3.96 (.156)
3	11.89 (.468)	7.93 (.312)
4	15.85 (.624)	11.89 (.468)
5	19.81 (.780)	15.85 (.624)
6	23.77 (.936)	19.81 (.780)
7	27.74 (1.092)	23.77 (.936)
8	31.70 (1.248)	27.74 (1.092)
9	35.66 (1.404)	31.70 (1.248)

Circuits	Dimension	
	A	B
10	39.62 (1.560)	35.66 (1.404)
11	43.59 (1.716)	39.62 (1.560)
12	47.55 (1.872)	43.59 (1.716)
13	51.51 (2.028)	47.55 (1.872)
14	55.47 (2.184)	51.51 (2.028)
15	59.44 (2.340)	55.47 (2.184)
16	63.40 (2.496)	59.44 (2.340)
17	67.36 (2.652)	63.40 (2.496)
18	71.32 (2.808)	67.36 (2.652)
19	75.29 (2.964)	71.32 (2.808)
20	79.25 (3.120)	75.29 (2.964)
21	83.21 (3.276)	79.25 (3.120)
22	87.17 (3.432)	83.21 (3.276)
23	91.14 (3.588)	87.17 (3.432)
24	95.10 (3.744)	91.14 (3.588)

* US Standard Product, available through Molex franchised distributors

* Contact Molex for 500' reels

FEATURES AND SPECIFICATIONS

Features and Benefits

- Standard lengths for faster designs
- Economical board-to-board interconnection
- Variety of lengths and circuit sizes for design flexibility
- Strip and retain for protecting wire leads
- Tin topcoat provides easy PC board direct termination
- Contact Molex for samples

Reference Information

UL File No.: E61522
 UL Style No.: 2651
 CSA File No.: LL61126
 Designed In: Inches

Electrical

Voltage: 300V
 See Electrical Specifications Table
 on Page H-29 for More Information

Physical

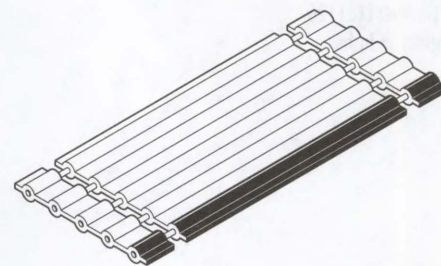
Flammability: VW-1
 Operating Temperature: -20 to +105°C
 Insulation: Gray PVC
 Edge Mark: Black



2.54mm (.100") Pitch Board-to-Board Standard Length Ribbon Cable Jumper

25001 26 AWG, Stranded Topcoat Wire,
 Strip and Retain

25002 24 AWG, Stranded Topcoat Wire,
 Strip and Retain



Ribbon Cable Systems

H

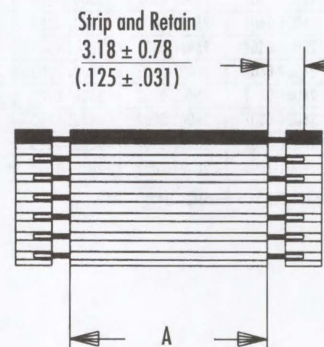
ORDERING INFORMATION AND DIMENSIONS

Circuits	Dimension A							
	1.000"	2.000"	3.000"	4.000"	5.000"	6.000"	7.000"	8.000"
3	25001-0301	25001-0302	25001-0303	25001-0304	25001-0305	25001-0306	25001-0307	25001-0308
4	25001-0401	25001-0402	25001-0403	25001-0404	25001-0405	25001-0406	25001-0407	25001-0408
5	25001-0501	25001-0502	25001-0503	25001-0504	25001-0505	25001-0506	25001-0507	25001-0508
6	25001-0601	25001-0602	25001-0603	25001-0604	25001-0605	25001-0606	25001-0607	25001-0608
7	25001-0701	25001-0702	25001-0703	25001-0704	25001-0705	25001-0706	25001-0707	25001-0708
8	25001-0801	25001-0802	25001-0803	25001-0804	25001-0805	25001-0806	25001-0807	25001-0808
9	25001-0901	25001-0902	25001-0903	25001-0904	25001-0905	25001-0906	25001-0907	25001-0908
10	25001-1001	25001-1002	25001-1003	25001-1004	25001-1005	25001-1006	25001-1007	25001-1008

Note: 25001 jumpers are made of 8996 series cable

Note: Recommended PCB hole diameter .032"

25002



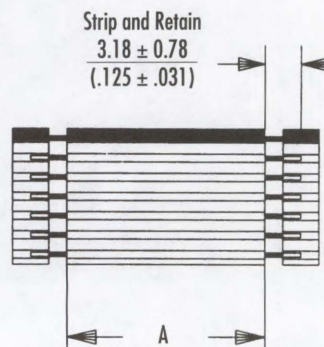
ORDERING INFORMATION AND DIMENSIONS

Circuits	Dimension A							
	1.000"	2.000"	3.000"	4.000"	5.000"	6.000"	7.000"	8.000"
3	25002-0301	25002-0302	25002-0303	25002-0304	25002-0305	25002-0306	25002-0307	25002-0308
4	25002-0401	25002-0402	25002-0403	25002-0404	25002-0405	25002-0406	25002-0407	25002-0408
5	25002-0501	25002-0502	25002-0503	25002-0504	25002-0505	25002-0506	25002-0507	25002-0508
6	25002-0601	25002-0602	25002-0603	25002-0604	25002-0605	25002-0606	25002-0607	25002-0608
7	25002-0701	25002-0702	25002-0703	25002-0704	25002-0705	25002-0706	25002-0707	25002-0708
8	25002-0801	25002-0802	25002-0803	25002-0804	25002-0805	25002-0806	25002-0807	25002-0808
9	25002-0901	25002-0902	25002-0903	25002-0904	25002-0905	25002-0906	25002-0907	25002-0908
10	25002-1001	25002-1002	25002-1003	25002-1004	25002-1005	25002-1006	25002-1007	25002-1008

Note: 25002 jumpers are made of 8997 series cable

Note: Recommended PCB hole diameter .032"

25001



FEATURES AND SPECIFICATIONS

Features and Benefits

- Standard lengths for faster designs
- Economical board-to-board interconnection
- Variety of lengths and circuit sizes for design flexibility
- Kinked tails for PCB retention
- Solid conductor wire tips hold spacing for easy insertion into PCB
- Contact Molex for samples

Reference Information

UL File No.: E61522
 UL Style No.: 2651
 CSA File No.: LL61126
 Designed In: Inches

Electrical

Voltage: 300V
 See Electrical Specifications Table
 on Page H-29 for More Information

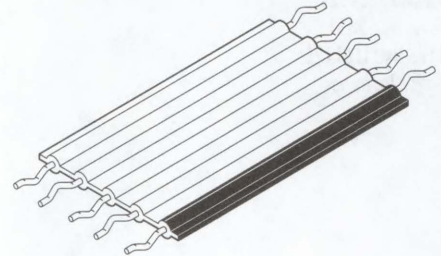
Physical

Flammability: VW-1
 Operating Temperature: -20 to +105°C
 Insulation: Gray PVC
 Edge Mark: Black



**2.54mm (.100") Pitch
 Board-to-Board
 Standard Length
 Ribbon Cable Jumper**

26001 24 AWG, Solid Tinned Wire,
 Kinked Tails

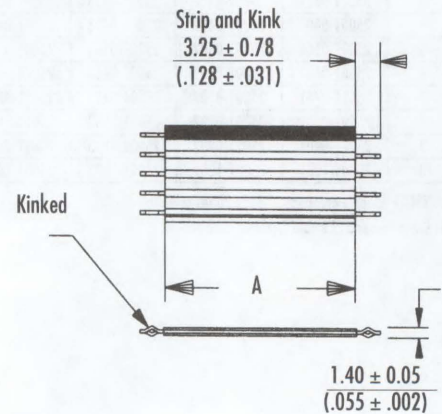


ORDERING INFORMATION AND DIMENSIONS

Circuits	Dimension A							
	1.000"	2.000"	3.000"	4.000"	5.000"	6.000"	7.000"	8.000"
3	26001-0301	26001-0302	26001-0303	26001-0304	26001-0305	26001-0306	26001-0307	26001-0308
4	26001-0401	26001-0402	26001-0403	26001-0404	26001-0405	26001-0406	26001-0407	26001-0408
5	26001-0501	26001-0502	26001-0503	26001-0504	26001-0505	26001-0506	26001-0507	26001-0508
6	26001-0601	26001-0602	26001-0603	26001-0604	26001-0605	26001-0606	26001-0607	26001-0608
7	26001-0701	26001-0702	26001-0703	26001-0704	26001-0705	26001-0706	26001-0707	26001-0708
8	26001-0801	26001-0802	26001-0803	26001-0804	26001-0805	26001-0806	26001-0807	26001-0808
9	26001-0901	26001-0902	26001-0903	26001-0904	26001-0905	26001-0906	26001-0907	26001-0908
10	26001-1001	26001-1002	26001-1003	26001-1004	26001-1005	26001-1006	26001-1007	26001-1008

Note: Recommended PCB hole diameter .042"

26001



molex® Custom Ribbon Cable Jumper

Features and Benefits

- Topcoat conductor cable used for easy PCB termination
- Economical board-to-board interconnection
- Variety of options:
 - Strip and retain for protecting wire leads
 - End notching for IDT termination
 - Kinked tails for PCB retention (in .079" or .100" pitch, 24 AWG solid conductor only)
 - Circuit voiding available
 - Flex notching for added flexibility and solder joint strain relief

Other features on 28XXX cable jumpers include end notching for IDT termination and intermittent notching for increased flexibility.

Contact Molex with the following information:

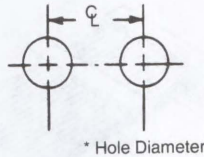
- Cable series (topcoat conductor only)
- Circuit size
- Overall length, including wire tips (min. overall length 1.00", no max.)
- Strip and retain dimensions between 3.18 to 8.00mm (.125 to .315") or kinked tails (.128" only)
- Notching dimensions (if any)
- Special requirements (if any)
- Circuit voids (if any)

Specifications

Cable Spacings: 1.27mm (.050")
 2.54mm (.100")
 3.96mm (.156")
 2.50mm (.098")
 2.00mm (.079")
 1.50mm (.059")

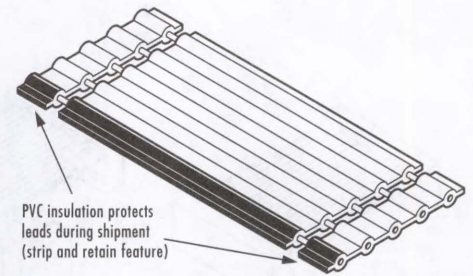
Circuits: 10 to 60
 3 to 36
 2 to 24
 3 to 30
 4 to 28
 6 to 30

Wire Gauge (Stranded, Topcoat)	Recommended Hole Diameter	
	mm (in.)	Tolerance
28	0.75 (.031)	±0.08 (.003)
26	0.80 (.032)	±0.08 (.003)
24	0.95 (.037)	±0.10 (.004)
22	1.10 (.043)	±0.10 (.004)



A practical and cost-effective method of board-to-board interconnection—not requiring a disconnect is the Molex PVC cable jumper system. Our jumpers utilize solid or topcoated conductors in a variety of spacings with a strip and retain feature that protects the wire leads during shipment and handling.

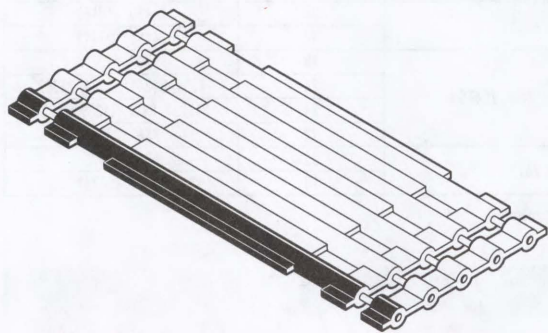
Molex has recognized the need for a system to design, quote and produce cable jumpers quickly. Our 28XXX system provides immediate quotations and the shortest lead times possible! Contact Molex for samples.



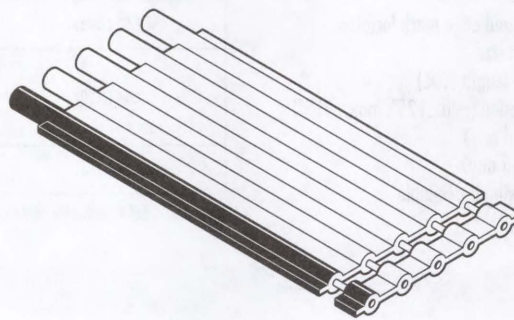
Cable jumpers are available through Molex franchised US distributors

Ribbon Cable Systems

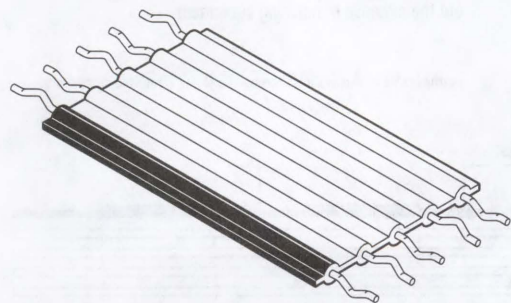
H



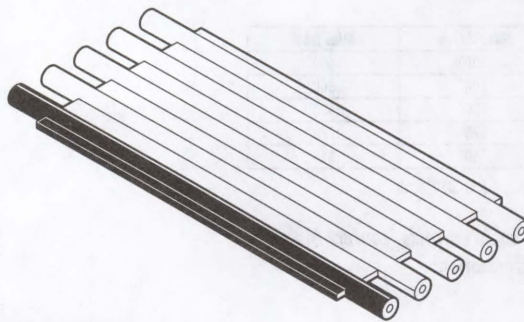
Strip and Retain with "Flex" Notches



Strip and Retain with End Notch for IDT



Kinked Tails on Both End



Both Ends Notched for IDT

Molex offers a variety of custom cable assemblies at industry-competitive prices.

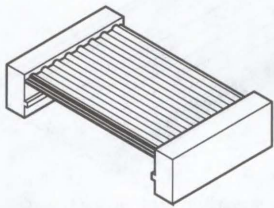
- Quality assurance guaranteed
- Production quantities in 4 to 6 weeks
- We provide finished assemblies or components and equipment for you to complete your own assemblies
- SPC and EDT used in all cable facilities
- Contact Molex for assembly samples

Features

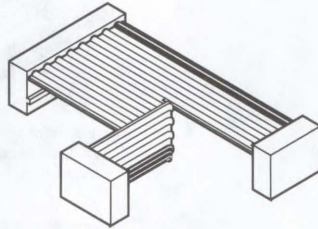
- Double-ended assemblies—fully disconnects from PC board
- Multi-connector assemblies
- Daisy chain assemblies—multiple connectors on the same electrical path
- Single-ended assemblies—single disconnect on one end
 - Strip and retain feature available for all pitches
 - Kinked tails, offering improved PCB retention, available for .100 and .079" assemblies
 - End notching for IDT termination, flex notching
- Cable folding, custom labels available
- Circuit voiding

Ribbon Cable Systems

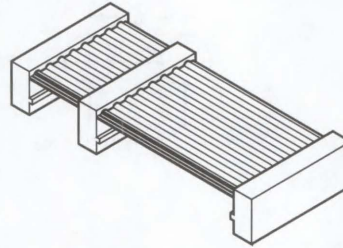
H



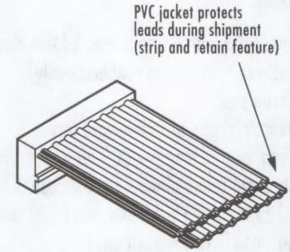
Double-Ended Assembly



Multi-Connector Assembly



Daisy-Chain Assembly



Single-Ended Assembly

PVC jacket protects leads during shipment (strip and retain feature)

To order custom cable assemblies, contact Molex or your local sales representatives with the following information:

- Assembly type/configuration
- Connector part numbers
- Connector orientation and edge mark location
- Cable series and circuit size
- Total overall assembly length (TOL)
- Strip and retain dimension (min. .125", max. .315")
- Notching dimensions (if any)
- Special requirements (if any)
- Provide sketch or drawing if available

Pitch	IDT Connector Series	AWG	Cable Series
1.27 (.050)	5360, 70121, 71891, 70625, 90584	28	6800, 40158*
		26	8863
2.00 (.079)	30452, 52484	26	24461*, 24462, 24463
		24	24471*, 24472, 24473
2.50 (.098)	42219, 42254	26	24490*, 40160
		24	24491*, 24492
2.54 (.100)	7720, 40555, 70400, 70475	28	7767, 7307*
		26	7234, 24241*, 8996, 24369
		24	24226*, 8997, 24389, 24327
		22	8867, 7560*
3.96 (.156)	7674, 7675	22	8868, 7382*
		18	7517*, 40174*

* Note: Stranded Tinned cable not recommended for strip & retain application

Features

- Available on 100, 300 and 500' reels
- Samples available through Molex
- Minimum notching dimensions:

Pitch	Min. Notch	Min. DBN
2.00 (.079)	.500"	.600"
2.50 (.098)	.500"	.600"
2.54 (.100)	.500"	.600"
3.96 (.156) (18 AWG)	.670"	.770"
3.96 (.156) (22 AWG)	.750"	.850"

Note: Notching not available on 1, 1.5 or .050" pitch

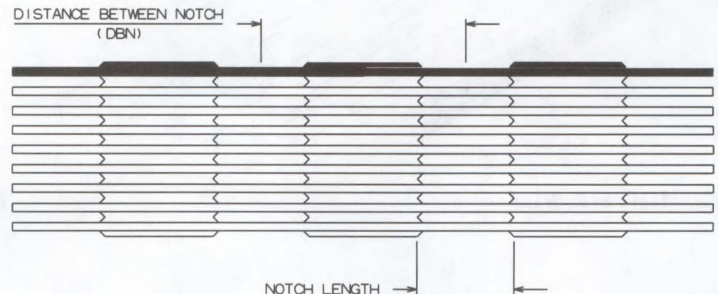
To order pre-notched cable on reels, contact Molex with the following information:

- Cable series
- Circuit size
- Reel size
- Notch length
- Distance Between Notches (DBN)

Pre-Notched Cable on Reels

Molex offers cable pre-notched for connector termination. Pre-notched cable offers the benefits of jumpers or bulk cable without the expense of notching equipment.

Notched cable is also available through US Molex franchised distributors



FEATURES AND SPECIFICATIONS

Features

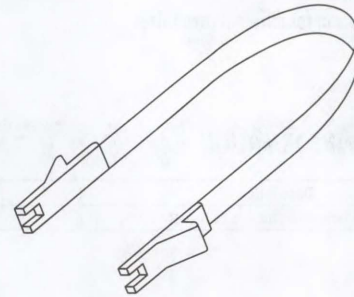
- Steel and plastic construction with moulded heads
- Long life spring steel handle
- Designed for "in the field" use, will help prevent damage to termination area and to connectors
- Suitable for all circuit sizes 4 to 26

This extraction tool is used to unmate the Picoflex connector 90327 from its header

Specifications

Size: (open) 105 x 110 x 12mm
Weight: 0.05kg approximate

Manual Extraction Tool for Picoflex™



ORDERING INFORMATION

Description	Order No.	Used with Molex Connector
Extraction Tool for 4 to 26 circuits	69008-1070	90327

FEATURES AND SPECIFICATIONS

Features

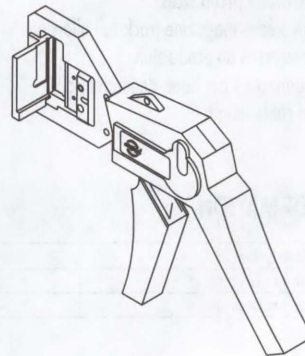
- Terminates Molex connectors 90327 and 90584, 4 to 26 circuits
- Designed for prototype: small batch and field repair applications
- Daisy chain and jumper harnesses can be made on this handtool with a small amount of adjustment

Parallel Action Handtool with cable guide

Specifications

Size: 260 x 150 x 50mm
Weight: 0.75kg
Working Services: None
Engineering Number: 69008-1080

Manual Handtool for Picoflex™



ORDERING INFORMATION

Description	Order No.	Used with Molex Connector
Picoflex Hand Tool for 4 to 26 circuits	69008-1080	90327, 90584

FEATURES AND SPECIFICATIONS

Features

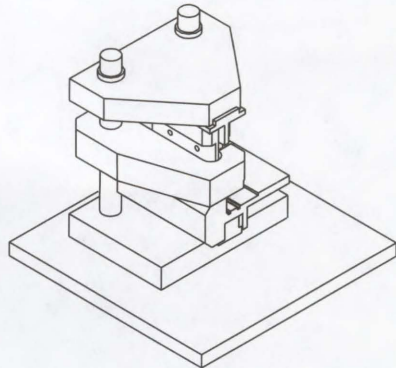
- Fully manual operation - requires no electrical or air supply
- Hand loading of connector and cable
- Cable guide
- Fits into Arbor press number 69020-0660
- Optional connector clamp 69020-1935
- Feed to and feed through application
- Suitable for all circuit sizes 4 to 26
- Terminates 90327 and 90584 series

Allows manual termination of pre-cut ribbon cable in an Arbor press

Specifications

Weight: 1kg
Dimensions: 15.5 x 110 x 90mm
Working Services: None
Engineering Number: 69020-1902

Manual Press Tool Kit for Picoflex™



ORDERING INFORMATION

Description	Order No.	Used with Molex Connector
Tool Kit for 4 to 26 circuits	69020-1902	90327, 90584
Manual Press for Tool Kit	69020-0660	90327, 90584
Optional Connector Clamp	69020-1935	90327, 90584



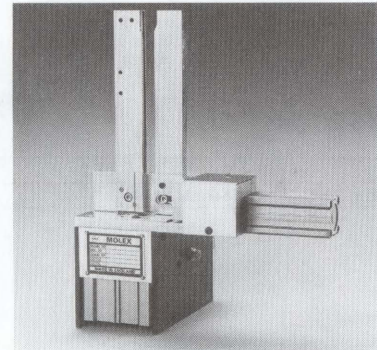
FEATURES

- For Picoflex 90327 connector (4 to 26 circuits)
- Fully pneumatic
- Cable triggers termination
- Production rate: 520 per hour
- Magazine feed
- Cable guidance
- Quick adjustment for different circuit sizes

Specifications

Weight: 12kg (26.45 lb)
 Pneumatics: Pressure—6 BAR
 Size: Width—210mm (8.26")
 Depth—30mm (1.18")
 Length—330mm (12.99")

**Semi-Automatic PB14
 Pneumatic Machine for
 Picoflex™**



ORDERING INFORMATION

Description	Order No.	Connector
PB14 Terminator for 4 to 26 circuits	69127-1001	90327

Ribbon Cable Systems

FEATURES AND SPECIFICATIONS

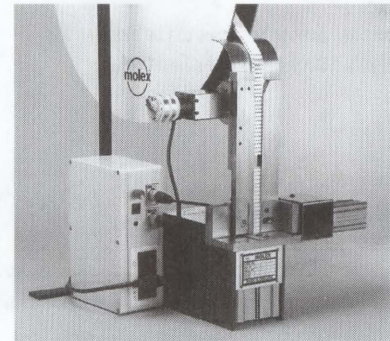
Features

- Automatic tape feed which increases the production capabilities of the PB14 terminator
- Cable entry triggers termination
- Quick adjustment between circuit sizes
- Sensor automatically keeps magazine track full allowing the operator to concentrate on production
- Rate: Up to 2100 connectors per hour, dependent on operator speed and cable length

Specifications

Weight: 25kg (55.12 lb)
 Pneumatics: Pressure—6 BAR
 Size: Width—280mm (11.00")
 Depth—330mm (12.99")
 Height—500mm (19.69")
 Electrical: 220V—50 Hz; 120V—60 Hz

**Semi-Automatic PB14T Tape
 Feed Machine for Picoflex™**



ORDERING INFORMATION

Description	Order No.	Connector
PB14T Terminator (220V) for 4 to 26 circuits	69127-1004	90327
PB14T Terminator (120V) for 4 to 26 circuits	69127-1024	90327

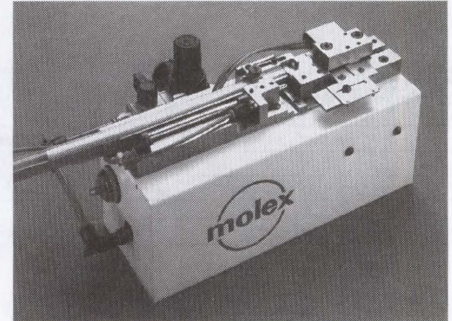
H

FEATURES AND SPECIFICATIONS

- For Picoflex 90584
- Fully pneumatic
- Automatic connector reloading
- Tube feed with connector orientation
- Timer to ensure complete termination
- Cable entry triggers termination

Specifications
 Weight: 25kg (55.12 lb)
 Pneumatics: Pressure—6 BAR (90psig)
 Size: Width—125mm (4.92")
 Depth—175mm (6.89")
 Length—700mm (27.56")

Semi-Automatic PB16 Tube Feed Pneumatic Machine for Picoflex™



ORDERING INFORMATION

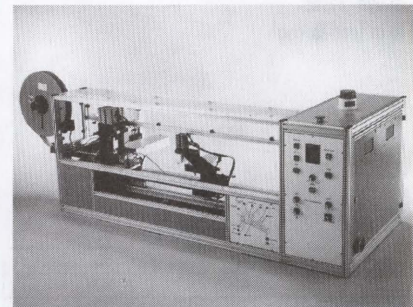
Description	Order No.	Connector
PB16 Terminator	69127-1010	90584

FEATURES

- Features**
- Medium volume, with fully automatic means of termination
 - Pneumatically actuated
 - Continuity testing built in
 - Wire straightener
 - PLC control
 - Harness collection tray

Specifications
 Weight: 140kg (308 lb)
 Electrical: 240V, 50 Hz single phase
 Pneumatics: Pressure—6 BAR (90psig)
 Consumption—6L per minute (0.22 CFM)
 Rate: Up to 360 harnesses per hour, dependent on operator speed and application

Automatic Desktop (PDT) Machine for Picoflex™



ORDERING INFORMATION

Description	Order No.	Connector
Picoflex Desktop Machine	Contact Molex	90327, 90584

Ribbon Cable Systems

H

FEATURES

- For low volume, prototype and field repair
- Snap-on modular die for terminating 1.27mm (.050") center ribbon cable to MX-50™ connectors 71247, 70625, 70121 and 71007

Manual Ribbon Cable Handtool for QF50



ORDERING INFORMATION

Description	Order No.	Notes
Pistol	63600-0478	Required for all modules
Power Adapter and Table Clamp	11-31-3337	Required for all modules

Description	Order No.	Use with Connector
Module	11-31-4652	QF 50™ 5320

FEATURES AND SPECIFICATIONS

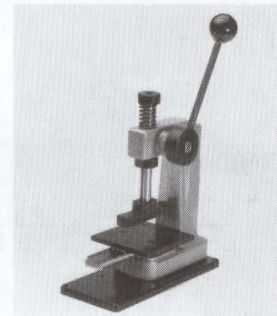
Features

- Lightweight, portable, reliable, low cost assembly
- Cable shearing capabilities
- Interchangeable tooling which is compatible with most competitive presses
- Feed-to or feed-through

Specifications

Size: Width—203mm (8")
 Depth—305mm (12")
 Height—360mm (14")
 Weight: 6.9kg (15 lb)
 Rate: Up to 110 assemblies per hour, dependent on operator speed

Manual Low Force Press and Interchangeable Tool Kits for QF-50 for Ribbon Cable



ORDERING INFORMATION

Description	Order No.	Tool Change Kit Order No.	Use with Connector
Manual Press Only	11-21-0679		All .050" Pitch Molex connectors
Universal Adapter Plate Assembly*	11-31-2176	11-31-2187	5360 QF 50
Universal Adapter Plate Assembly*	11-31-2176	11-31-2335	5320 QF 50

* If customer already owns Universal Adapter Plate Assembly (11-31-2176), all that is required for each above connector is the appropriate Tool Change Kit

Customer Application Note: If application requires terminating the 71007, 70121, 70625 or 5320 connector above 60 circuits, the customer is advised to check the arbor press platen length. However, if the customer already has an arbor press, it is possible the platen length is 3.250". The platen is a black aluminum "T"-shaped piece located at the bottom end of the arbor press ram. If the customer expects to terminate 64 circuit connectors, the extended platen (3.750") may be ordered using the following number: Order No. 11-10-1055.

Note: For more information, reference Application Tooling section

Ribbon Cable Systems

H

FEATURES

Features

- Modular interchangeable tooling
- Quick tooling changeovers
- Ratchet terminator assures completion of full cycle
- Lightweight and portable

Specifications

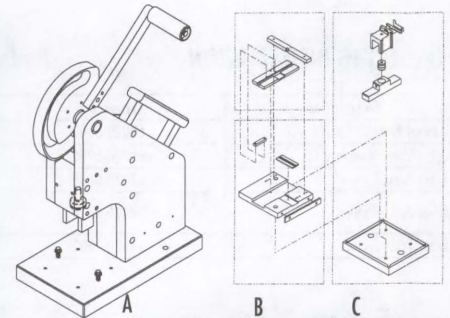
Size: Width—152mm (6")
 Depth—533mm (10.5")
 Height—267mm (21")
 Weight: 23kg (50 lb)
 Max. Force: 13.3kw (3000 lb)
 Shut Height 42.00mm (1.650")
 Stroke Length: 43.00mm (1.690")

Manual High Force Standard Press and Interchangeable Tool Kits for QF-50 Ribbon Cable

ORDERING INFORMATION

Basic Press and Tooling Order No.	Press Tool Kits Order No.*	Tool Change Kits Order No.†	Terminates Connector
11-20-1168	11-21-9652	11-31-2187	5360 QF 50™
11-20-1169	11-21-9653	11-31-2335	5320 QF 50

Description	Order No.	Reference
Basic Manual Press	11-31-6356	A
Ribbon Cable Tooling Adapter	11-20-0947	B
Basic Press with Tooling Adapter	11-20-1170	A, B
Universal Adapter Plate	11-31-2176	C



Ribbon Cable Systems

FEATURES AND SPECIFICATIONS

Features

- Automatic connector reloading
- Magazine feed with connector orientation
- Timer to ensure complete termination
- Cable guide
- Quick adjustment between circuit sizes
- Foot pedal operation
- Automatic tape feed—optional

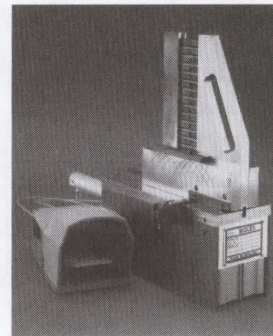
Specifications

Weight: 28kg
 Pneumatics: Pressure—6 BAR (90psig)
 Consumption—14L per minute (0.5 CFM)

Semi-Automatic PB15 Pneumatic Machine for QF-50 Ribbon Cable

ORDERING INFORMATION

Description	Order No.	Connector
PB15 Magazine	69127-1050	90635, 40312
PB15 Tape	69127-1100	90635, 40312



H

FEATURES AND SPECIFICATIONS

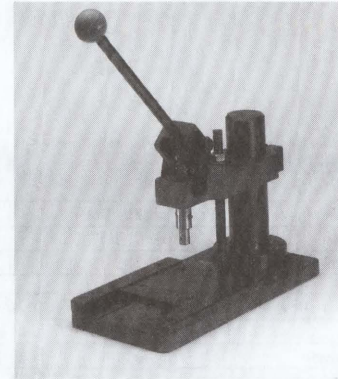
Features

- Lightweight, portable, reliable assembly
- Cable shearing capabilities
- Feed-to or feed-through

Specifications

Size: Width—153mm (6")
 Depth—305mm (12")
 Height—457mm (18")
 Weight: 7.8kg (17.2 lb)
 Rate: Up to 110 assemblies per hour, dependent on operator speed and cable length

Modular Euro Arbor Press for Ribbon Cable Connectors



ORDERING INFORMATION

Preferred Version in Europe—Not Available in the US

Description	Order No.	Type	For Use With
Manual Press	69020-0660	Manual Press Modular System	All equipment listed below
Cable Shear Module	69020-0900	Cable Preparation	To shear ribbon scale of all sizes
Arbor Press Fixture	69020-0680	Termination Tooling	Connectors 5320, 90635
Arbor Press Fixture	69020-0710		Connectors 5350, 5370 and 5380 QF 50
Arbor Press Fixture	69020-1902		Connectors 90327, 90584

Ribbon Cable Systems

FEATURES AND SPECIFICATIONS

Preferred Version in the Far East—Not Available in the US

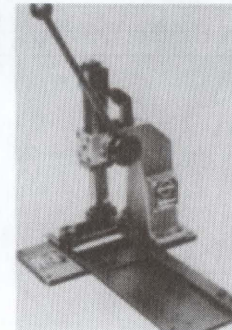
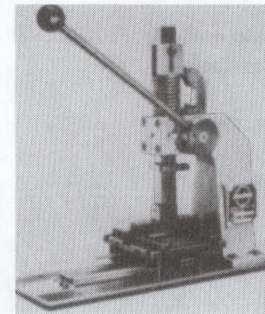
Features

- Manually operated, ratchet type
- QF 50™

Specifications

Weight: Bench—7.80kg (17.2 lb)
 Space: 153 by 305mm (6 by 12")
 Height: 457mm (18")

J 5930 Series Press and Cutter



ORDERING INFORMATION

Description	Order No.	Type	For Use With
Press Frame	11-26-0075	Press	All equipment listed in press section
Base Assembly	11-26-0081		Press Frame
Kit QF Female	11-26-0082		Connector 5320
Kit QF 2.54mm (.100") Grid	11-26-0083		Connector 5360
Press Frame	11-26-0075	Cutter	All equipment listed in cutter section
Cutter	11-26-0078		Press Frame

H

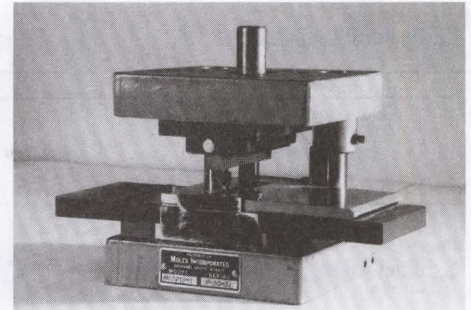
Features

- Notches cable for feed through or end termination of Molex IDT connectors
- Must be used with Molex 3BF Press (see Application Tooling for press information)

Specifications

Size: Width—254mm (10")
 Depth—229mm (9")
 Height—203mm (8")
 Weight: 22.5kg (50 lb)
 Rate: Up to 500 notches per hour, dependent on operator speed and application

Semi-Automatic Bench Mounted Prep Cable Notcher for Ribbon Cable



Ribbon Cable Systems

H

ORDERING INFORMATION

Press	
Description	Order No.
Rebuilt 3BF Press	Contact Molex

Description	Order No.	Cable Series No.
.156" Pitch Cable Notcher (18-22 gauge) 2-24 circuits	11-21-0728	7382, 7517, 8868, 40174
.156" Pitch Cable Notcher (18-24 gauge) 2-24 circuits	11-39-0263	7382, 7517, 8868, 40174
.156" Pitch Cable Notcher (18-24 gauge) 2-24 circuits	11-20-1121	7382, 7517, 8868, 40174
[†] .100" Pitch Cable Notcher (22-24 gauge) 2-28 circuits	11-21-4114	7560, 8867, 8997, 24226, 24327, 24389
[§] .100" Pitch Cable Notcher (24-28 gauge) 2-28 circuits	11-20-0944	7234, 7307, 7767, 8996, 8997, 24226, 24241, 24327, 24369, 24389
[†] .100" Pitch Cable Notcher (26-30 gauge) 2-28 circuits	11-21-4112	7234, 7307, 7767, 8996, 24241, 24369
[†] .100" Pitch Cable Notcher (26-30 gauge) 2-28 circuits	11-20-0464	7234, 7307, 7767, 8996, 24241, 24369
[†] 2.50mm Pitch Cable Notcher (24-28 gauge) 2-28 circuits	11-20-0439	24490, 24491, 24492, 40160
2.50mm Pitch Cable Notcher (24-28 gauge) 2-28 circuits	11-20-1258	24490, 24491, 24492, 40160
2.00mm Pitch Cable Notcher (24-26 gauge) 2-28 circuits	11-20-1321	24461, 24462, 24463, 24471, 24472, 24473

- * Wide notch
- [†] Full notch (no-web standard application in the US)
- [†] Web notch (non-standard application in the US)
- [§] Full notch for SL™ application only

FEATURES AND SPECIFICATIONS

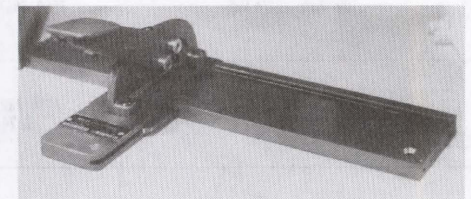
Features

- Accommodates all Molex cable
- Table mounted hand tool for fast, accurate and low cost cable cutting
- Cable stop to control cut length
- Maximum cable width 92.42mm (3-7/8")
- Also for flat flexible cable

Specifications

Size: Width—510mm (20")
 Depth—254mm (10")
 Height—127mm (5")
 Weight: 2.13kg (4.75 lb)

Bench Style Cable Shear



ORDERING INFORMATION

Description	Order No.
Bench Style Cable Shear	11-20-0785

Note: See prior page for notch data

FEATURES AND SPECIFICATIONS

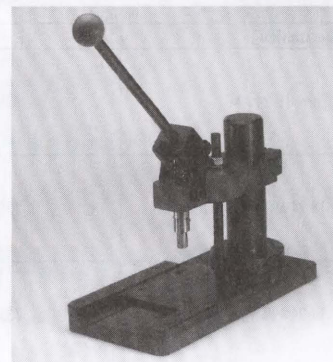
Features

- Lightweight, portable, reliable assembly
- Cable shearing capabilities
- Feed-to or feed-through

Specifications

Size: Width—153mm (6")
 Depth—305mm (12")
 Height—457mm (18")
 Weight: 7.8kg (17.2 lb)
 Rate: Up to 110 assemblies per hour, dependent on operator speed and cable length

Modular Euro Arbor Press for Ribbon Cable Connectors



ORDERING INFORMATION

Preferred Version in Europe—Not Available in the US

Description	Order No.	Type	For Use With
Manual Press	69020-0660	Manual Press Modular System	All equipment listed below
Cable Shear Module	69020-0900	Cable Preparation	To shear ribbon scale of all sizes

**Cable Notcher
Punch Configurations**

Ribbon Cable Systems

H

2.00mm (.079") Cable

Description	Cable Series No.	Connector Series No.	Punch Configuration
2.00mm Pitch	24461, 24462, 24463, 24471, 24472, 24473	30452	

2.50mm (.098") Cable

Description	Cable Series No.	Connector Series No.	Punch Configuration
2.50mm Pitch	24490, 24491, 24492, 40160	SPOX™—42219, 42254; User Friendly—90650, 90652 KK® Connector 7795	
2.50mm Pitch	24490, 24491, 24492, 40160	SPOX—42219, 42254; User Friendly—90650, 90652 KK Connector 7795	

2.54mm (.100") Cable

Description	Cable Series No.	Connector Series No.	Punch Configuration
.100" Pitch 22-24 AWG	7560, 8867, 8997, 24226, 24327, 24389	7720, 7720S, 7822, 40555	
.100" Pitch 22-24 AWG	7560, 8867, 8997, 24226, 24327, 24389	7720, 7720S, 7822, 40555	
.100" Pitch 24-28 AWG SL	7234, 7307, 7767, 8996, 8997, 24226, 24241, 24327, 24369, 24389	SL 70400 Series	
.100" Pitch 26-30 AWG	7234, 7307, 7767, 8996, 24241, 24369	7720, 7720S, 7822, 40555	
.100" Pitch 26-30 AWG	7234, 7307, 7767, 8996, 24241, 24369	7720, 7720S, 7822, 40555	

3.96mm (.156") Cable

Description	Cable Series No.	Connector Series No.	Punch Configuration
.156" Pitch 18-24 AWG	7382, 7517, 8868, 40174	7674, 7675, 6952	
.156" Pitch 18-24 AWG Wide Notch	7382, 7517, 8868, 40174	7674, 7675, 6952	
.156" Pitch 18-24 AWG Wide Notch	7382, 7517, 8868, 40174	7674, 7675, 6952	