

# **FCN-234D/235D\*\*\*-G/\*, 237R\*\*\*-G/\***

## **FCN-230R Series SCSI II,III,IPI Connectors**

### FEATURES

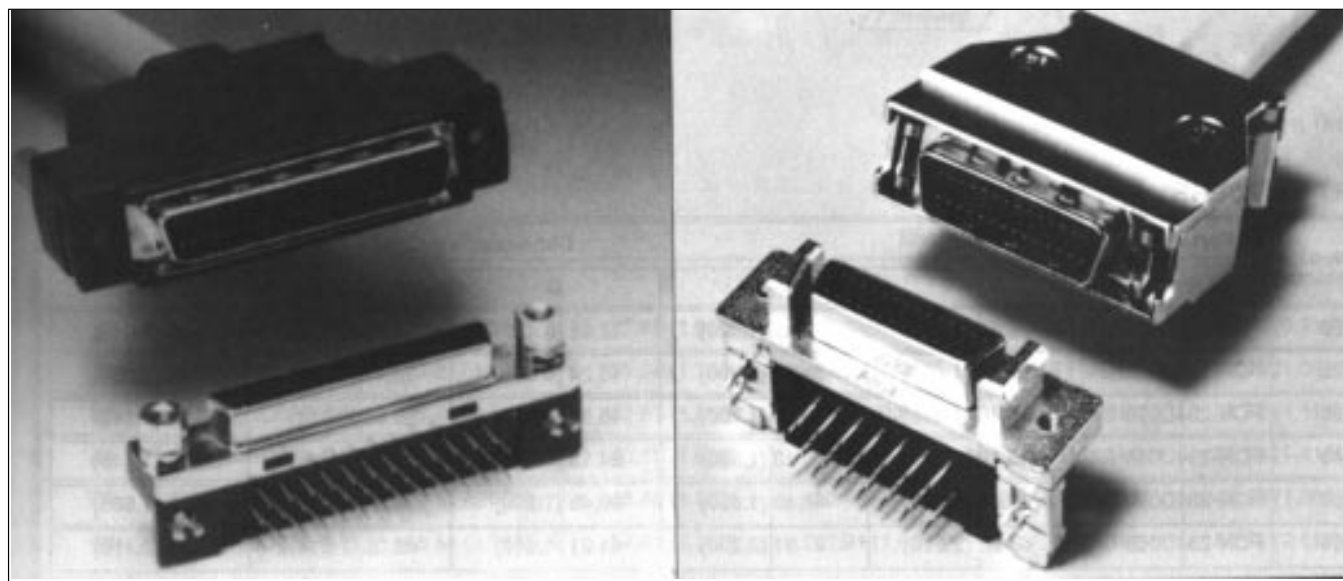
- Mating contacts have 1.27 mm (0.050 in.) pitch configuration, enabling high density mounting and interface
- Conforms to the SCSI-II, SCSI-III specification approved by ANSI (50 and 68 positions)
- Conforms to MII/100baseT interface specification (40 position)
- Conforms to RS-232 Alt (26 position)
- Conforms to the IPI (Intelligent Peripheral Interface) and HSC (High Speed Channel) recommended by ANSI (50,100 pin)
- Discrete wire (AWG#28, #30) I/O cable can be assembled by IDC
- Terminals are arranged in a staggered configuration (1.27 mm × 1.905 mm (0.050 in. × 0.075 in.))

### SPECIFICATIONS

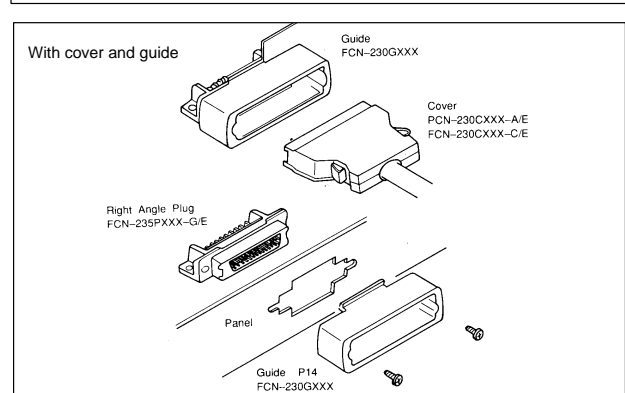
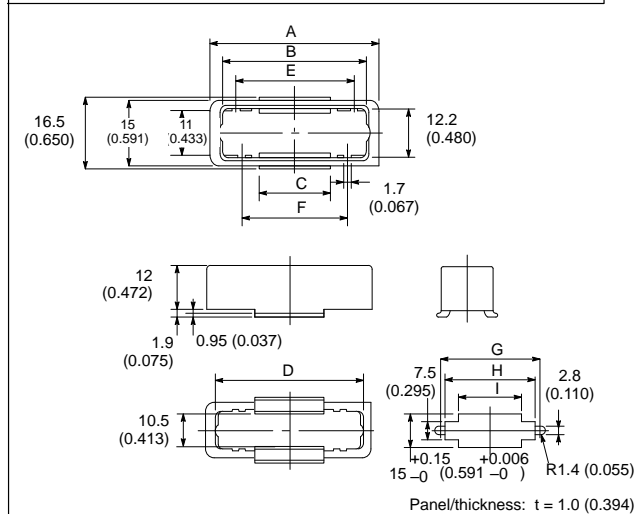
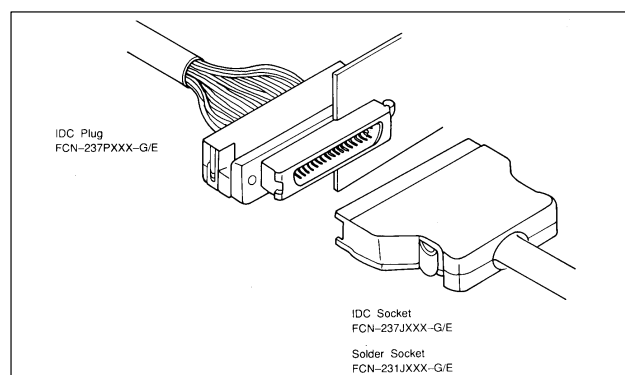
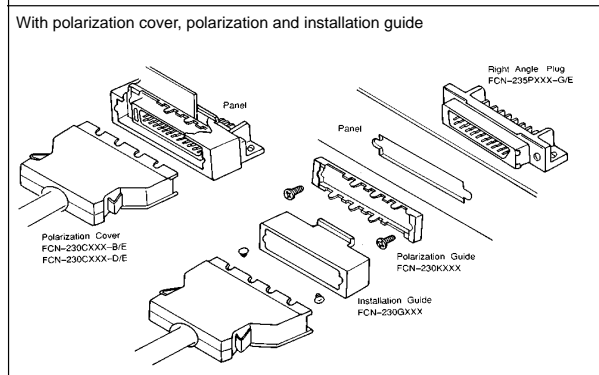
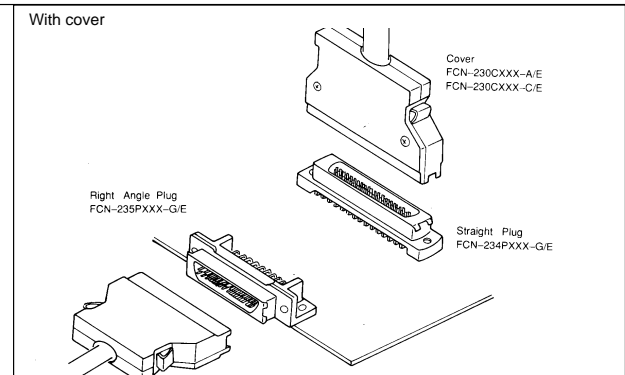
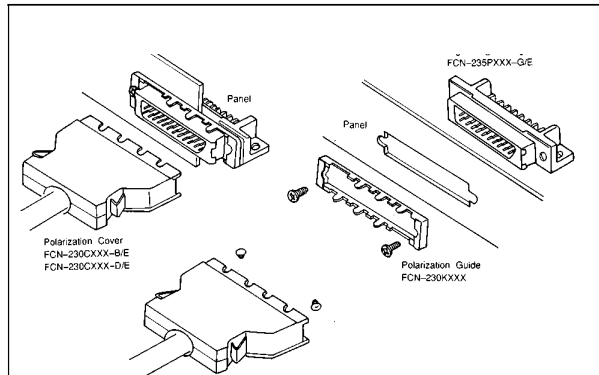
Operating Temperature Range	−55 to +105°C
Maximum Allowable Current	1 ADC
Maximum Allowable Voltage	240 VAC
Contact Resistance	30 mΩ max at 6 VDC, 0.1 A
Insulation Resistance	1000 MΩ min at 500 VAC
Dielectric Strength	750 VAC for 1 minute
Applicable Wire	AWG #28 OR #30 (wire diameter: Ø0.5 to Ø0.65 mm (0.020 to 0.026) or Ø0.8 to Ø0.88 (0.03 to 0.035 in.))

### MATERIALS

Insulator	Polimide Resin (UL94V-0)
Conductor	Copper alloy
Contact Plating	Gold over palladium over nickel (PAGOS)



## EXAMPLES OF CONNECTOR APPLICATIONS (PCB TO CABLE)



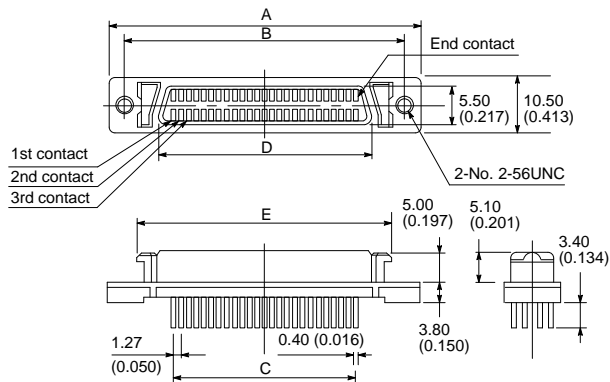
Unit: mm (in.)

## PART NUMBERS Installation Guide

No. of Contacts	Part Number	Dimensions								
		A	B	C	D	E	F	G	H	I
20	FCN-230G020	37.4 (1.472)	30.7 (1.209)	11 (0.433)	33 (1.297)	25 (0.984)	8 (0.315)	27.4 (1.079)	23.7 (0.933)	11.3 (0.445)
28	FCN-230G028	42.5 (1.673)	35.8 (1.409)	16 (0.630)	38.1 (1.500)	30 (1.181)	16 (0.630)	32.5 (1.280)	28.8 (1.134)	16.3 (0.642)
36	FCN-230G036	47.6 (1.874)	40.9 (1.610)	20 (0.787)	43.2 (1.701)	34 (1.339)	31 (1.220)	37.6 (1.480)	33.9 (1.335)	20.3 (0.799)
50	FCN-230G050	56.3 (2.217)	49.6 (1.953)	30 (1.181)	52.1 (2.051)	42 (1.654)	39 (1.535)	46.5 (1.831)	42.8 (1.685)	30.3 (1.193)
68	FCN-230G068	67.7 (2.665)	61 (2.462)	40 (1.575)	63.5 (2.500)	52 (2.047)	49 (1.929)	57.9 (2.280)	54.1 (2.130)	40.3 (1.587)

FCN-234D\*\*\*-G/E STRAIGHT TYPE, BOARD-SOCKET

DIMENSIONS

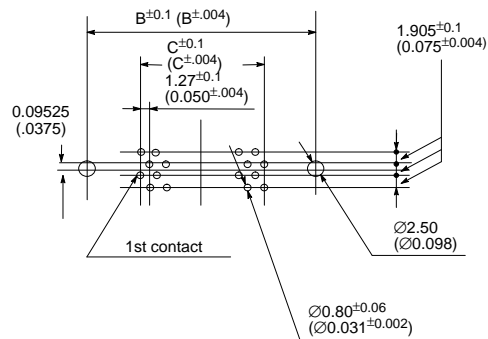
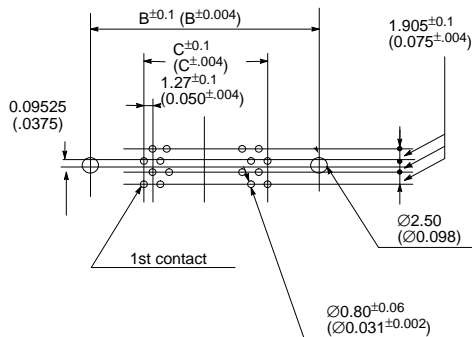


2

MOUNTING HOLE LAYOUT

26, 50-contacts

20, 28, 40, and 68-contacts



Unit mm (in.)

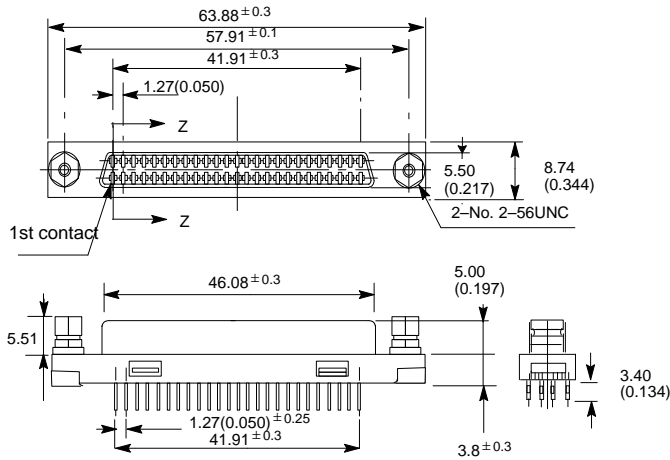
PART NUMBERS

No. of Contacts	Part Number	Dimensions				
	Straight	A	B	C	D	E
20	FCN-234D020-G/E	33.40 (1.315)	27.43 (1.080)	11.43 (0.450)	15.60 (0.614)	23.24 (0.915)
26	FCN-234D026-G/E	37.21 (1.465)	31.24 (1.230)	15.24 (0.600)	19.41 (0.764)	27.05 (1.065)
28	FCN-234D028-G/E	38.48 (1.515)	32.51 (1.280)	16.51 (0.650)	20.68 (0.814)	28.32 (1.115)
40	FCN-234D040-G/E	46.10 (1.815)	40.13 (1.580)	24.13 (0.950)	28.30 (1.114)	35.94 (1.415)
50	FCN-234D050-G/E	52.45 (2.065)	46.48 (1.830)	30.48 (1.200)	34.65 (1.364)	42.29 (1.665)
68	FCN-234D068-G/E	63.88 (2.515)	57.91 (2.280)	41.91 (1.650)	46.08 (1.814)	53.72 (2.115)

Note: See recommended panel cut-out in Backshells and Accessories for 230/240 Series.

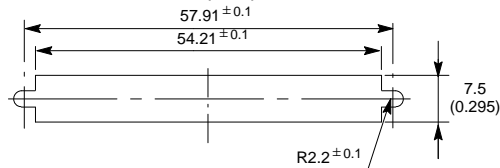
## FCN-234D068-G/P\*\*\* STRAIGHT TYPE, BOARD-SOCKET

### DIMENSIONS



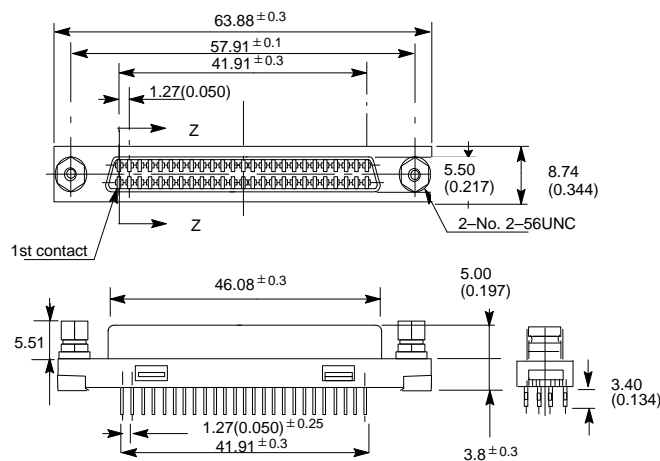
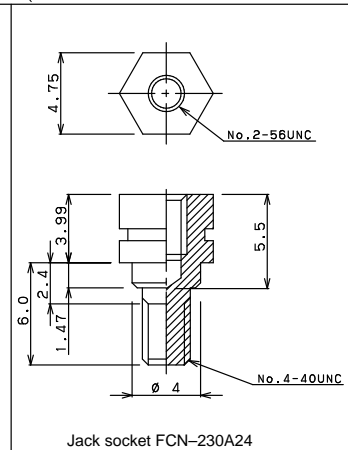
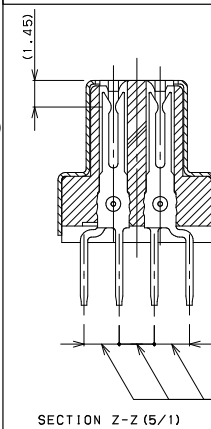
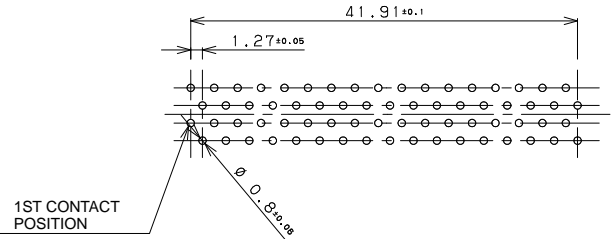
### PANEL LAYOUT

PANEL/THICKNESS:  $t = 1.0(0.039)$



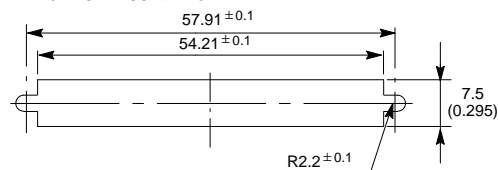
PART NO. : FCN-234D068-G/P#DO

### MOUNTING HOLE LAYOUT PCB THICKNESS : 1.6mm

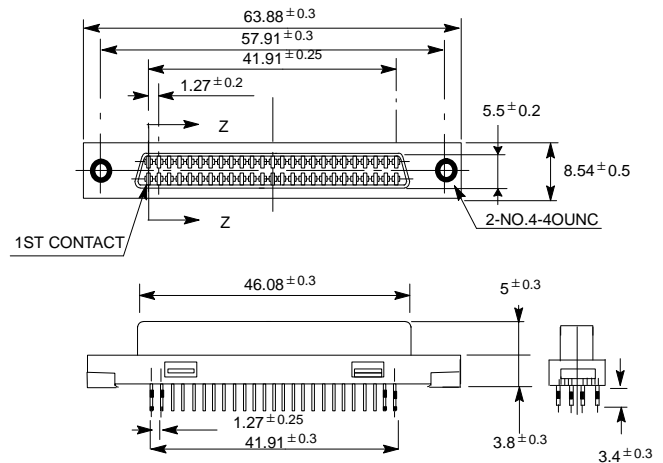


### PANEL LAYOUT

PANEL/THICKNESS:  $t = 1.5\text{mm}$

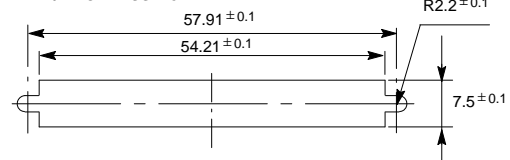


PART NO. : FCN-234D068-G/P #Bo



### PANEL LAYOUT

PANEL/THICKNESS: 1.5mm

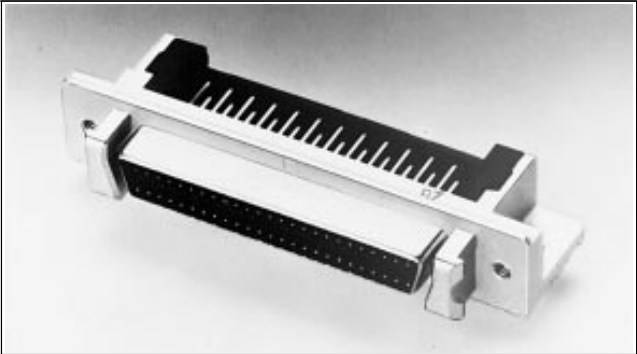
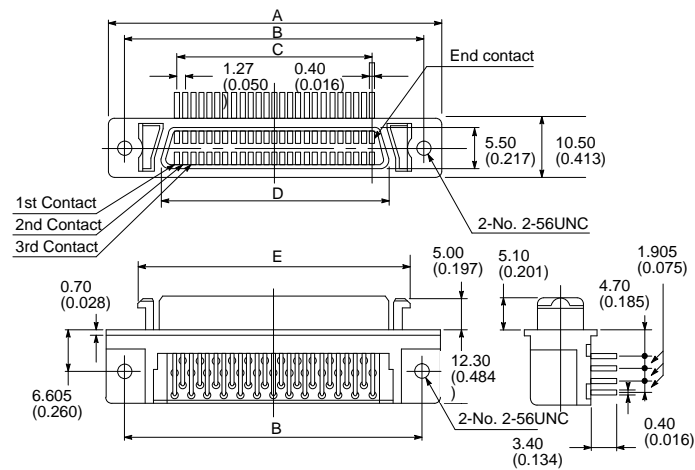


PART NO. : FCN-234D068-G/P

- NOTE:**
1. Housing : 6T-NYLON UL94V-0
  2. Contact : Phosphor bronze  
Surface treatment : Gold over Palladium
  3. Unless otherwise specified, dimensions are in mm and tolerances are 0.5mm.

FCN-235D\*\*\*-G/E RIGHT-ANGLE, BOARD-SOCKET  
(SCSI II 50,68 Pos Connector) (RS-232-Alt 26 Pos Connector)

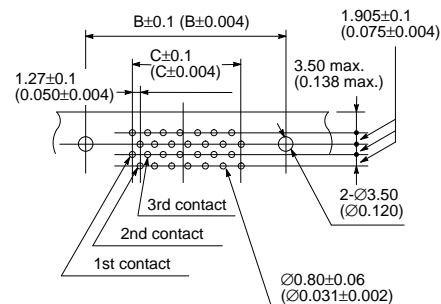
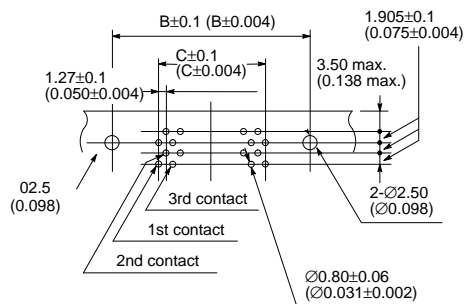
DIMENSIONS



MOUNTING HOLE LAYOUT

26, 50-Contacts

20, 28, 40, 68-Contacts



Unit: mm (in.)

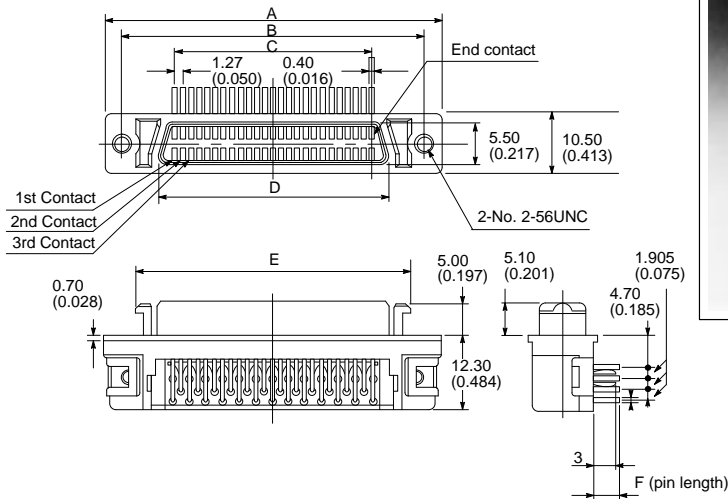
PART NUMBERS

No. of Contacts	Part Number	Dimensions				
	Right-Angle	A	B	C	D	E
20	FCN-235D020-G/E	33.40 (1.315)	27.43 (1.080)	11.43 (0.450)	15.60 (0.614)	23.24 (0.915)
26	FCN-235D026-G/E	37.21 (1.465)	31.24 (1.230)	15.24 (0.600)	19.41 (0.764)	27.05 (1.065)
28	FCN-235D028-G/E	38.48 (1.515)	32.51 (1.280)	16.51 (0.650)	20.68 (0.814)	28.32 (1.115)
40	FCN-235D040-G/E	46.10 (1.815)	40.13 (1.580)	24.13 (0.950)	28.30 (1.114)	35.94 (1.415)
50	FCN-235D050-G/E	52.45 (2.065)	46.48 (1.830)	30.48 (1.200)	34.65 (1.364)	42.29 (1.665)
68	FCN-235D068-G/E	63.88 (2.515)	57.91 (2.280)	41.91 (1.650)	46.08 (1.814)	53.72 (2.115)

Note: See recommended panel cut-out in Backshells and Accessories for 230/240 Series.

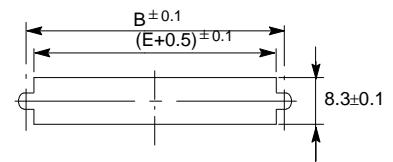
## FCN-235D\*\*\*-G/H RIGHT-ANGLE, BOARD-SOCKET WITH BOARD LOCKS (SCSI II 50,68 Pos Connector) (RS-232-Alt 26 Pos Connector)

### DIMENSIONS



### PANEL LAYOUT

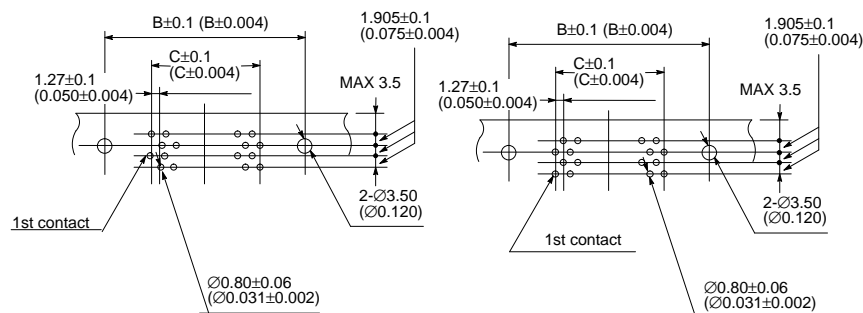
PANEL/THICKNESS:  $t = 1.0$



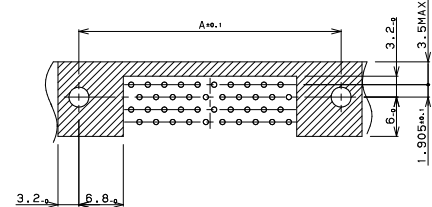
### PCB LAYOUT

20, 28, 40, 68-Contacts

26, 50-Contacts



NO PATTERN AREA

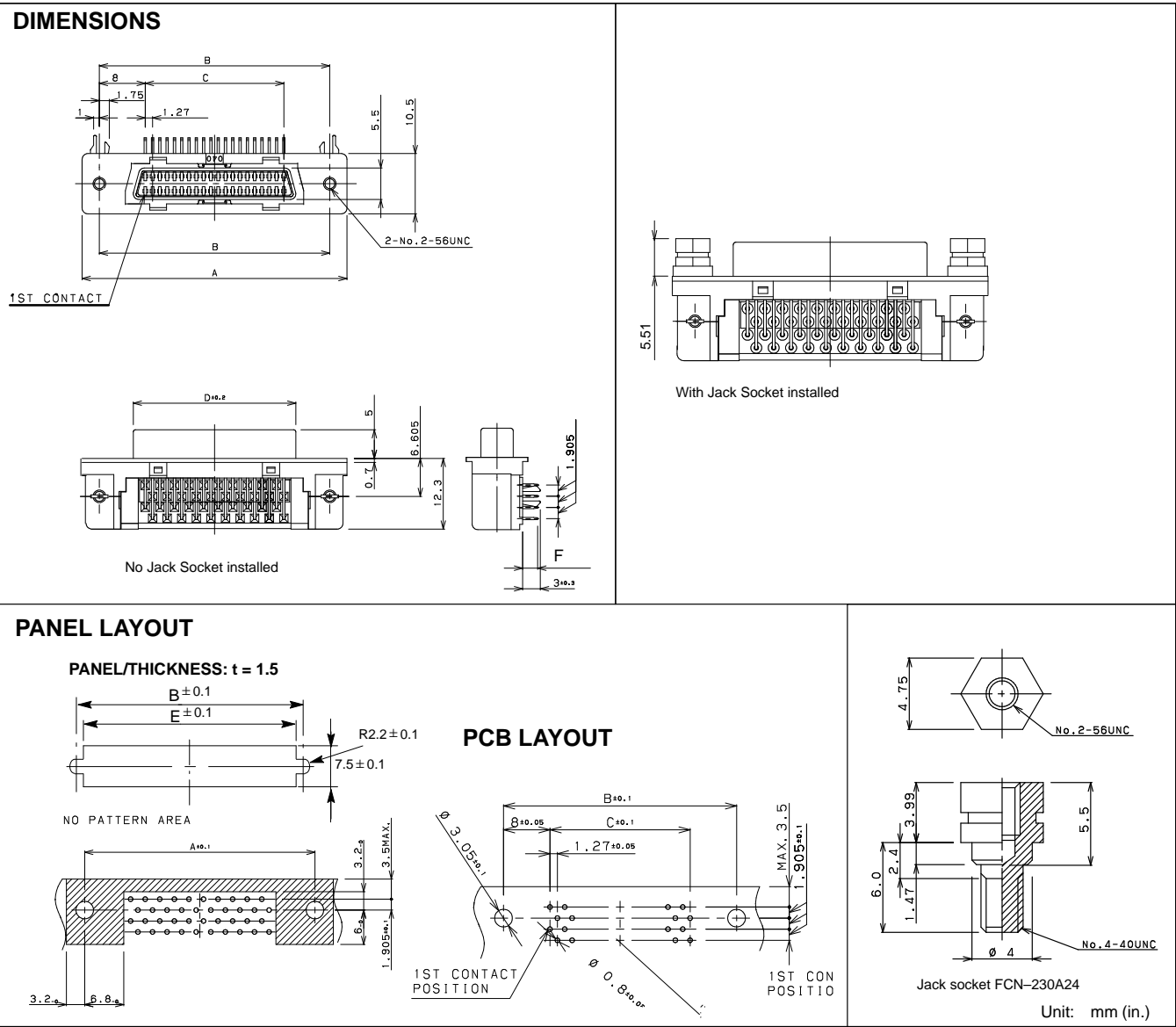


Unit: mm (in.)

### PART NUMBERS

	No. of Contacts	Part Number	Dimensions					
			A	B	C	D	E	F
*	20	FCN-235D020-G/H	33.40 (1.315)	27.43 (1.080)	11.43 (0.450)	15.60 (0.614)	23.24 (0.915)	3.40
*	26	FCN-235D026-G/H	37.21 (1.465)	31.24 (1.230)	15.24 (0.600)	19.41 (0.764)	27.05 (1.065)	3.40
*	28	FCN-235D028-G/H	38.48 (1.515)	32.51 (1.280)	16.51 (0.650)	20.68 (0.814)	28.32 (1.115)	3.40
*	40	FCN-235D040-G/H	46.10 (1.815)	40.13 (1.830)	24.13 (0.950)	28.30 (1.114)	35.94 (1.415)	3.40
*	50	FCN-235D050-G/H	52.45 (2.065)	46.48 (1.830)	30.48 (1.200)	34.65 (1.364)	42.29 (1.665)	3.40
*	68	FCN-235D068-G/H	63.88 (2.515)	57.91 (2.280)	41.91 (1.650)	46.08 (1.814)	53.72 (2.115)	3.40

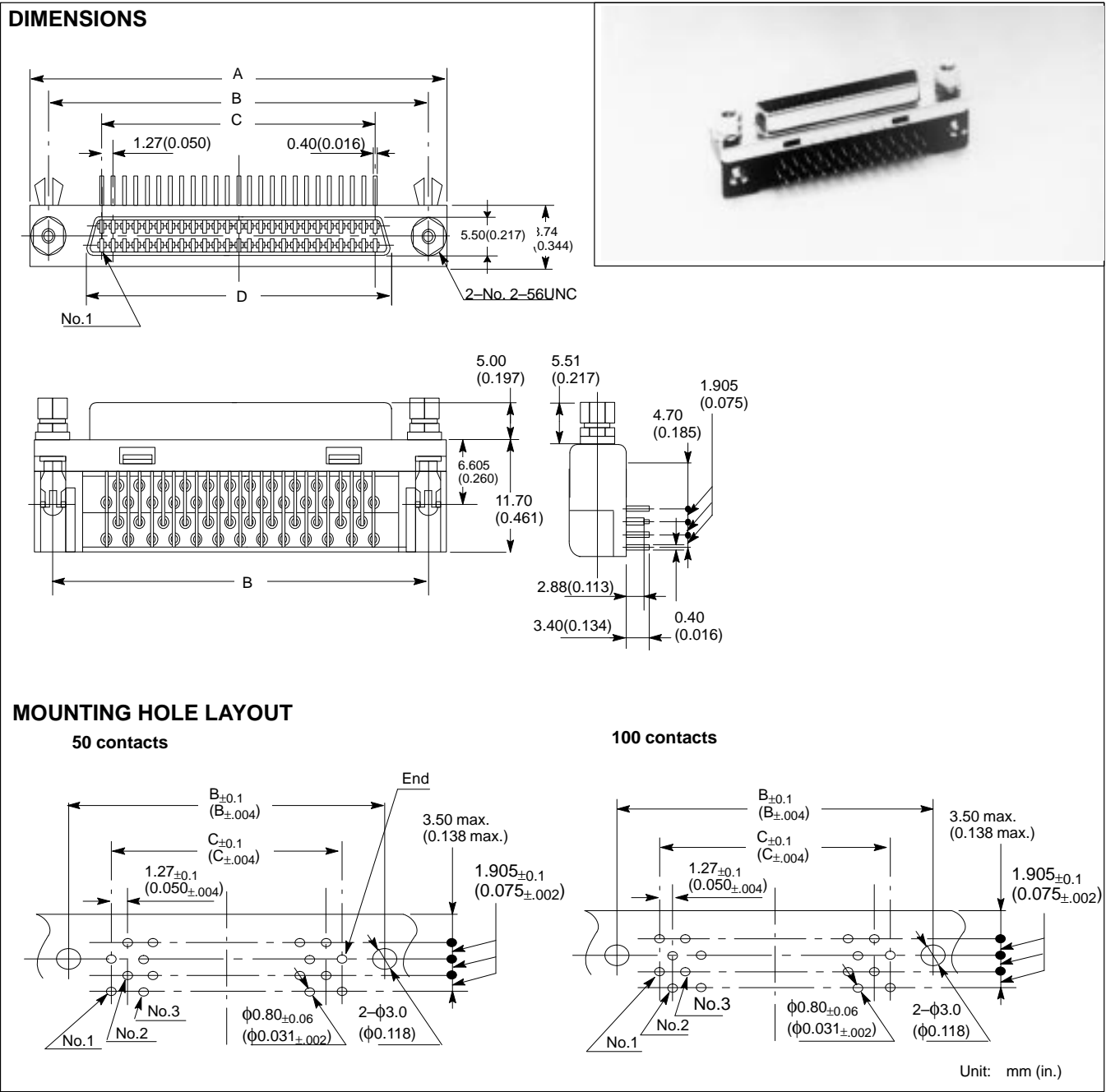
FCN-235D-G/\*\* RIGHT ANGLE, BOARD-SOCKET, METAL SHELL,  
BOARDLOCKS (40 Pin MII/100 base T std) (68 Pin SCSI III std)



PART NUMBERS

No. of Contracts	Part Number	A	B	C	D	E	F	Jack Sockets
40	FCN-235D040-G/HASR	46.10 (1.815)	40.13 (1.830)	24.13 (0.950)	28.30 (1.114)	36.43 (1.434)	2.54	INSTALLED
40	FCN-235D040-G/HAR	46.10 (1.815)	40.13 (1.830)	24.13 (0.950)	28.30 (1.114)	36.43 (1.434)	3.40	INSTALLED
40	FCN-235D040-G/HBSR	46.10 (1.815)	40.13 (1.830)	24.13 (0.950)	28.30 (1.114)	36.43 (1.434)	2.54	————
40	FCN-235D040-G/HBR	46.10 (1.815)	40.13 (1.830)	24.13 (0.950)	28.30 (1.114)	36.43 (1.434)	3.40	————
68	FCN-235D068-G/HASR	63.88 (2.515)	57.91 (2.280)	41.91 (1.650)	46.08 (1.814)	54.21 (2.134)	2.54	INSTALLED
68	FCN-235D068-G/HAR	63.88 (2.515)	57.91 (2.280)	41.91 (1.650)	46.08 (1.814)	54.21 (2.134)	3.40	INSTALLED
68	FCN-235D068-G/HBSR	63.88 (2.515)	57.91 (2.280)	41.91 (1.650)	46.08 (1.814)	54.21 (2.134)	2.54	————
68	FCN-235D068-G/HBR	63.88 (2.515)	57.91 (2.280)	41.91 (1.650)	46.08 (1.814)	54.21 (2.134)	3.40	————

FCN-235D\*\*\*-G/P#BA RIGHT-ANGLE SOCKET (Meets Hippi & IPI std)



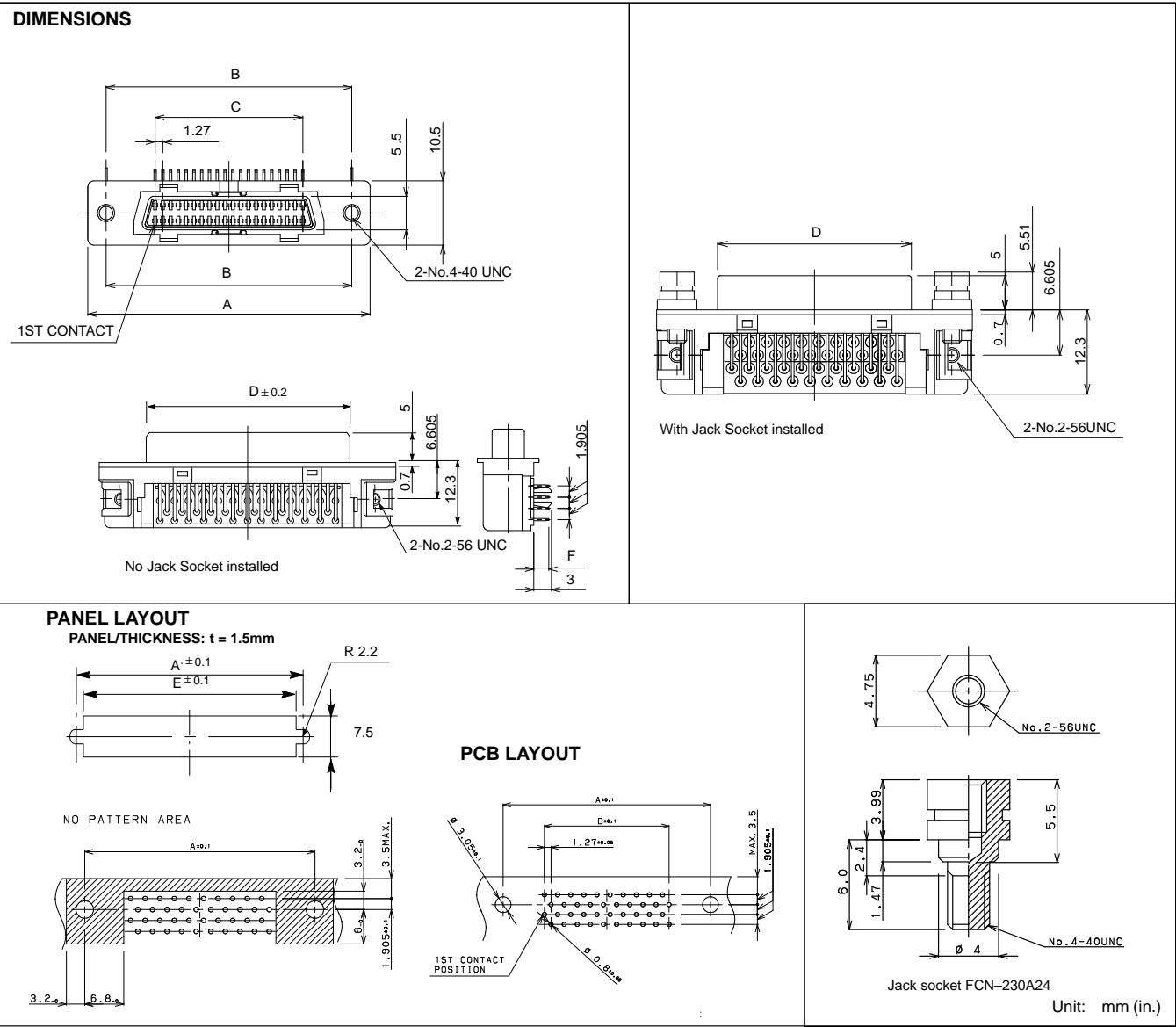
PART NUMBERS

No. of Contacts	Part Number	Dimensions			
		A	B	C	D
50	FCN-235D050-G/P#BA	52.45 (2.065)	46.48 (1.830)	30.48 (1.200)	34.65 (1.364)
100	FCN-235D100-G/P#BA	84.20 (3.315)	78.23 (3.080)	62.23 (2.450)	66.40 (2.614)

**Note:** See recommended panel cut-out in Backshells and Accessories for 230/240 Series.  
For SCSI III board mount connectors see page 3-32.



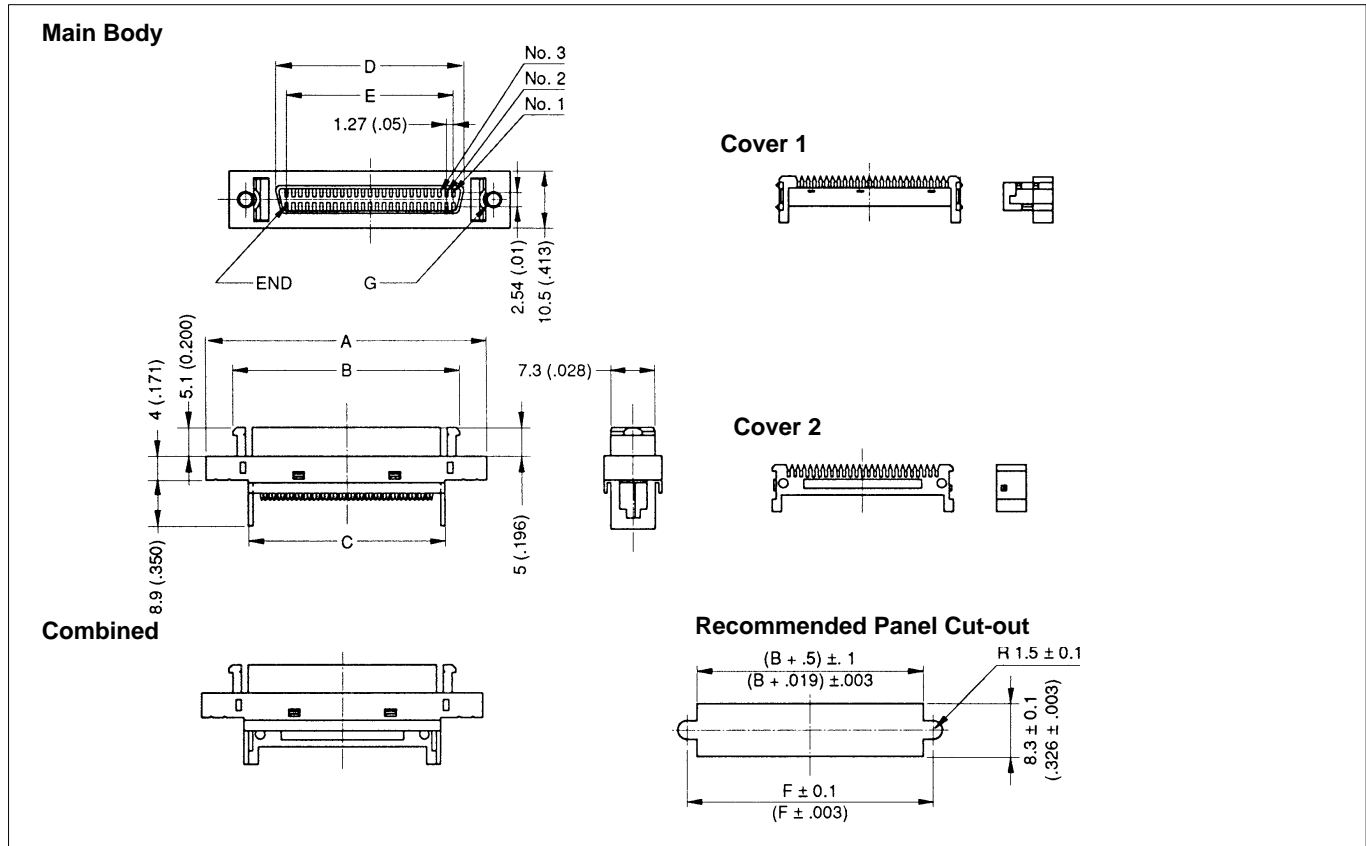
FCN-235D068-G/\*\* METAL SHELL TYPE SOCKET, BOARDLOCK  
(SCSI III)



PART NUMBERS

No. of Contracts	Part Number	A	B	C	D	E	F	Jack Sockets
68	FCN-235D068-G/HA	63.88 (2.515)	57.91 (2.280)	41.91 (1.650)	46.08 (1.814)	54.21 (2.134)	3.4	Installed
68	FCN-235D068-G/HB	63.88 (2.515)	57.91 (2.280)	41.91 (1.650)	46.08 (1.814)	54.21 (2.134)	3.40	——

## FCN-237D\*\*\*-G/\*\* SCSI PANEL MOUNT CONNECTORS



2

### PART NUMBERS

No. of Contacts	Part Number	A	B	C	D	E	F	G
50	FCN-237D050-G/CG	52.45 (2.064)	42.29 (1.664)	37.90 (1.492)	34.65 (1.364)	30.48 (1.2)	46.48 (1.829)	2-M2.5
	FCN-237D050-G/EG	52.45 (2.064)	42.29 (1.664)	37.90 (1.492)	34.65 (1.364)	30.48 (1.2)	46.48 (1.829)	No. 2-56UNC
68	FCN-237D068-G/CG	63.88 (2.515)	53.72 (2.114)	49.33 (1.942)	46.08 (1.814)	41.91 (1.65)	57.91 (2.279)	2-M2.5
	FCN-237D068-G/EG	63.88 (2.515)	53.72 (2.114)	49.33 (1.942)	46.08 (1.814)	41.91 (1.65)	57.91 (2.279)	No. 2-56UNC

### CABLE ASSEMBLY TOOL

Cable aligner and IDC tool are required for cable assembly.

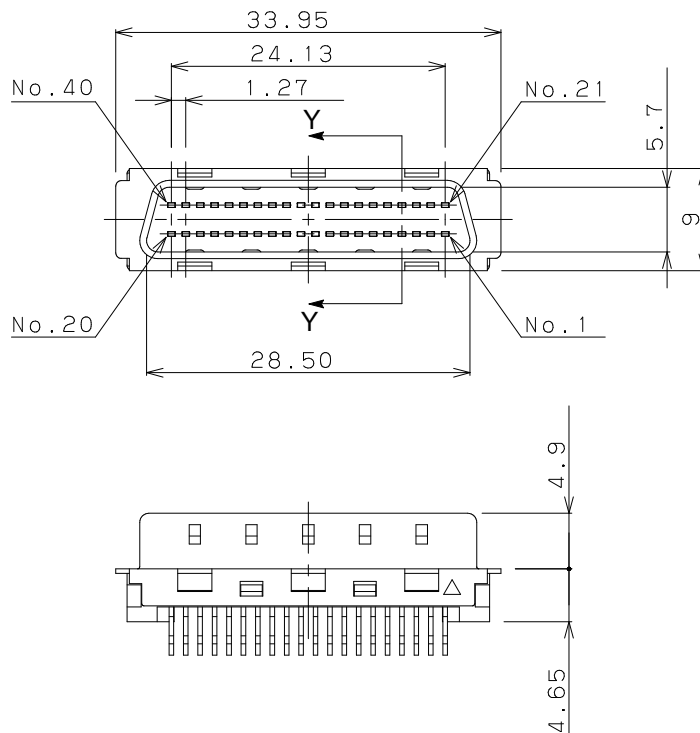
Position Number	External Diameter of Applied Wire (mm)	Connector Part No.	Cable Aligner		IDC Tool	
			Hand Tool	Semi-Auto		
50	#28 or #30 (0.65-0.8)	FCN-237D050-G/CG	FCN-237T-T062/H	(see below*)	Hand press: FCN-237T-T109/H Head and Locator: FCN-237T-T075/H	
		FCN-237D050-G/EG				
68		FCN-237D068-G/CG				
		FCN-237D068-G/EG				

**Note:** There are 2 alternatives for the semi-automatic cable aligner

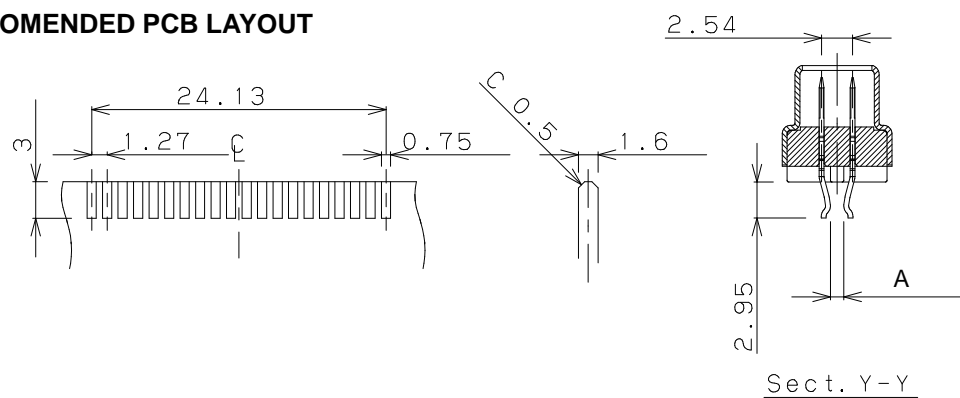
- FCN-M550 series  
Body: FCN-M551-120 (for 120V), FCN-M551-220 (for 220V)  
Head: FCN-H550-1/A  
Applidator: FCN-A550-1/A\*\*\* (\*\* = Pos. no.: 050,068)  
Stand: FCN-D550
- FCN-M560 series  
Body: FCN-M561-A  
Controller: FCN-B561 (for 100V or 115 V), FCN-B561-220 (for 220V)  
Bed: FCN-P560-2/a  
Adapter: FCN-K560-R\*\*\* (\*\* = Pos. no.: 050, 068)

FCN-238P040-G/\* STRADDLE MOUNT PLUG MII/100 base T

DIMENSIONS



RECOMENDED PCB LAYOUT

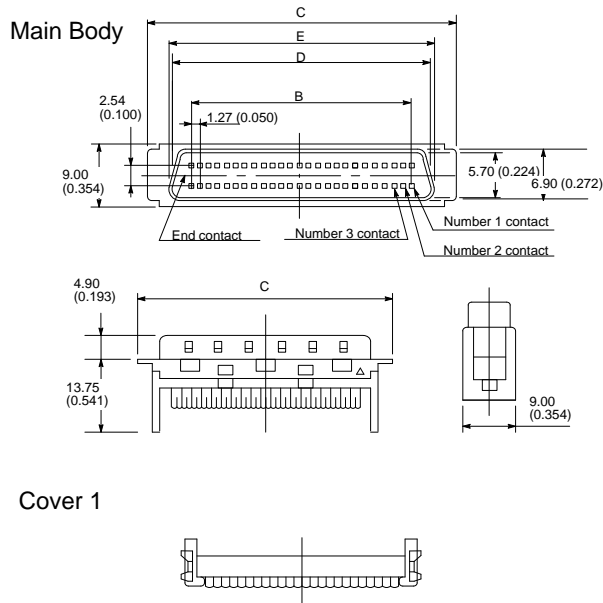


FCN-238P040-G/F (A=1.1±0.3)

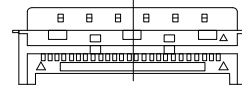
Unit: mm (in.)

## FCN-237R\*\*\*-G/\* IDC TYPE, CABLE-PLUG

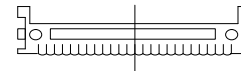
### DIMENSIONS



Assembled Part



Cover 2



Unit: mm (in.)

2

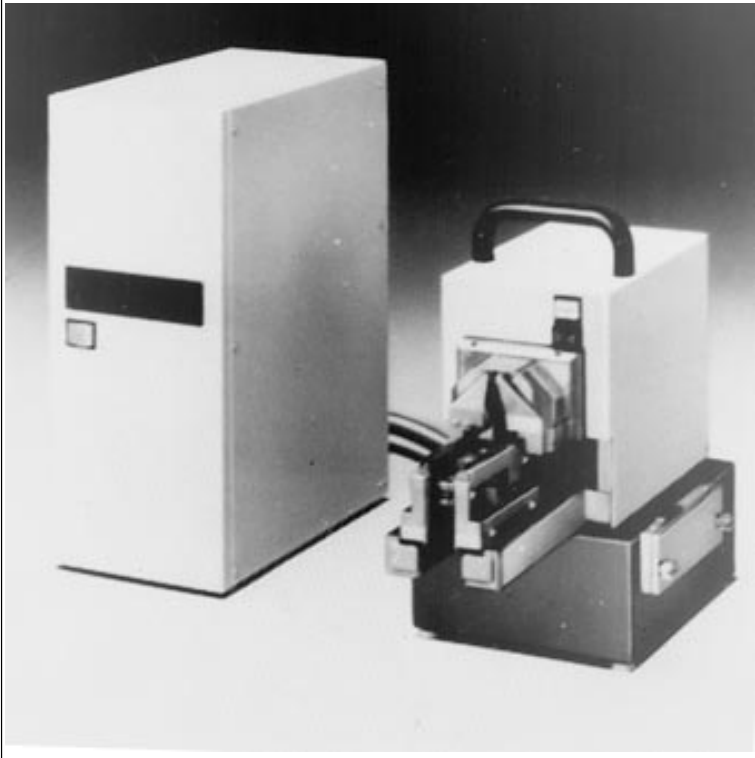
### PART NUMBERS

No. of Contacts	External Diameter of Applied Wire	Part Number	Dimensions				
			A	B	C	D	E
20	Ø0.8 to 0.88 mm (0.031 to 0.035)	FCN-237R020-G/F	16.75 (0.659)	11.43 (0.450)	21/25 (0.837)	15.80 (0.622)	17.00 (0.669)
	Ø0.5 to 0.65 mm (0.020 to 0.026)	FCN-237R020-G/E					
	Ø0.66 to 0.79 mm (0.026 to 0.030)	FCN-237R020-G/G					
26	Ø0.8 to 0.88 mm (0.031 to 0.035)	FCN-237R026-G/F	20.56 (0.809)	15.24 (0.600)	25.06 (0.987)	19.61 (0.722)	20.81 (0.819)
	Ø0.5 to 0.65 mm (0.020 to 0.026)	FCN-237R026-G/E					
28	Ø0.8 to 0.88 mm (0.031 to 0.035)	FCN-237R028-G/F	21.83 (0.859)	16.51 (0.650)	26.33 (1.037)	20.88 (0.822)	22.08 (0.869)
	Ø0.5 to 0.65 mm (0.020 to 0.026)	FCN-237R028-G/E					
40	Ø0.8 to 0.88 mm (0.031 to 0.035)	FCN-237R040-G/F	29.45 (1.159)	24.13 (0.950)	33.95 (1.377)	28.50 (1.122)	29.70 (1.169)
	Ø0.66 to 0.79 mm (0.026 to 0.030)	FCN-237R040-G/G					
50	Ø0.8 to 0.88 mm (0.031 to 0.035)	FCN-237R050-G/F	35.80 (1.409)	30.48 (1.200)	40.30 (1.587)	34.85 (1.587)	36.05 (1.419)
	Ø0.5 to 0.65 mm (0.020 to 0.026)	FCN-237R050-G/E					
	Ø0.66 to 0.79 mm (0.026 to 0.030)	FCN-237R050-G/G					
68	Ø0.8 to 0.88 mm (0.031 to 0.035)	FCN-237R068-G/F	47.23 (1.859)	41.91 (1.650)	51.73 (2.037)	46.28 (1.822)	47.48 (1.869)
	Ø0.5 to 0.65 mm (0.020 to 0.026)	FCN-237R068-G/E					
	Ø0.66 to 0.79 mm (0.026 to 0.030)	FCN-237R068-G/G					
100	Ø0.8 to 0.88 mm (0.031 to 0.035)	FCN-237R100-G/F	67.55 (2.659)	62.23 (2.450)	72.05 (2.837)	66.60 (2.622)	67.80 (2.669)
	Ø0.5 to 0.65 mm (0.020 to 0.026)	FCN-237R100-G/E					

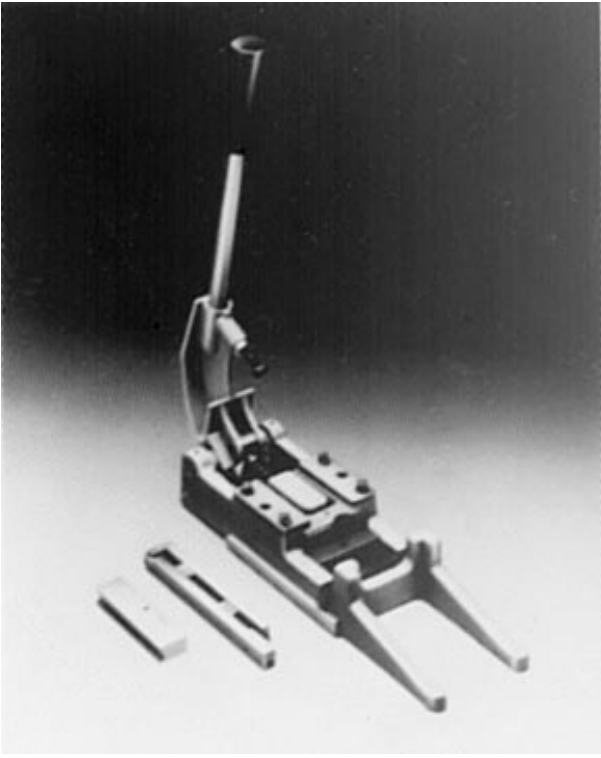
**Notes:** See recommended panel cut-out in Backshells and Accessories for 230/240 Series.  
Panel mount/cable mount socket also available.  
Please consult sales representative for more information.

FCN-234D/235D\*\*\*-G/\*  
FCN-237R\*\*\*-G/\*

Semi-automatic cable aligner  
Cable Aligning Machine  
Main Body (FCN-M561-A)



IDC tool



FCN-230R SERIES SCSI II CABLE CONNECTORS

PLUG: FCN-237R\*\*\*-G/E,-G/F (\*\*\*: 020, 026, 028, 050, 068)

Pos No.	Applied Wire (wire Dia.: mm)	Connector Part Number	Cable Aligner		IDC Tool
			Hand Tool	Semi-Auto	
20   68	#28 or #30 (0.8 to 0.88)	FCN-237R020-G/F   FCN-237R068-G/F	FCN-237T-T062/H or FCN-237T-T043/H	(See below*)	HAND PRESS: FCN-237T-T109/H HEAD & Locator: FCN-237T-T067/H
	#28 or #30 (0.5 to 0.65)	FCN-237R020-G/E   FCN-237R-068-G/E			

\*Semi-automatic cable aligner

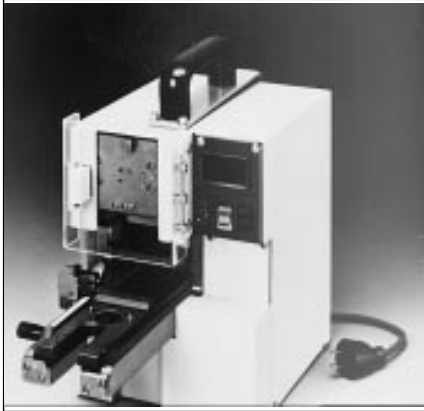
Body :FCN-M561-A

Controler :FCN-B561-120 (FOR 120V), FCN-B561-220 (FOR 220V)

Bed :FCN-P560-2/A

Adapter :FCN-K560-R-\*\*\* (\*\*\*:020, 026, 028, 040, 050, 068, 100)

**Semi-Automatic Tools**  
**Cable Aligning Machine**  
**Main Body (FCN-M551-120, FCN-M551-220)**



Head (FCN-H550-1/A)



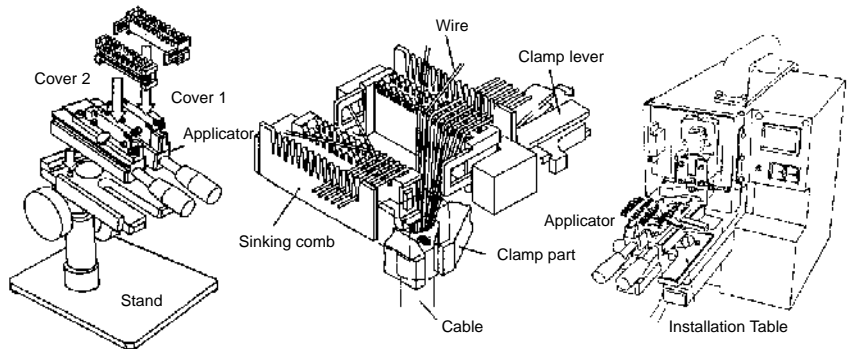
Stand (FCN-D550)



Applicator (FCN-A550-1/A-xxx)



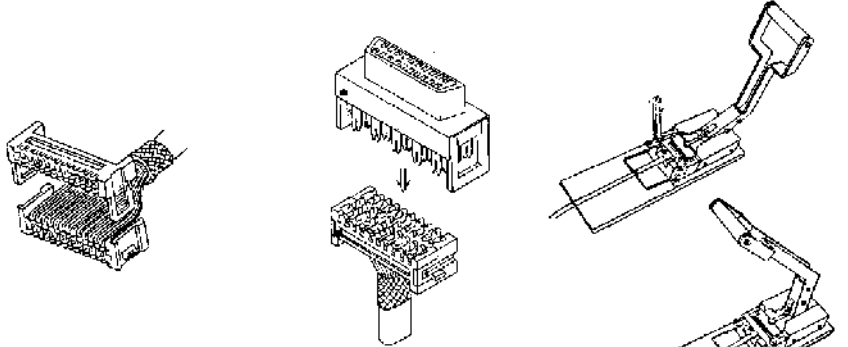
IDC Tool (FCN-237T-T109/H,  
FCN-237T-T067/H locator)



1. Set the applicator on the stand.  
Set covers 1 and 2 in the applicator

2. Push the wires into the sinking  
combs.

3. Set the applicator onto the  
installation table and begin  
cable alignment.



4. Take the covers off the  
applicator.

5. Put covers together and  
pre-assemble them to  
the connector body.

6. Conduct final assembly as shown.

2

**FCN-230R SERIES SCSI II CABLE CONNECTORS**

**PLUG: FCN-237R\*\*\*-G/E, -G/F (\*\*\*: 020, 026, 028, 050, 068)**

Pos No.	Applied Wire (wire Dia.: mm)	Connector Part Number	Cable Aligner		IDC Tool
			Hand Tool	Semi-Auto	
20   68	#28 or #30 (0.8 to 0.88)	FCN-237R020-G/F   FCN-237R068-G/F	FCN-237T-T062/H or FCN-237T-T043/H	(See below*)	HAND PRESS: FCN-237T-T109/H HEAD & Locator: FCN-237T-T067/H
	#28 or #30 (0.5 to 0.65)	FCN-237R020-G/E   FCN-237R-068-G/E			

Semi-automatic-Medium Level

Body: :FCN-M551-120

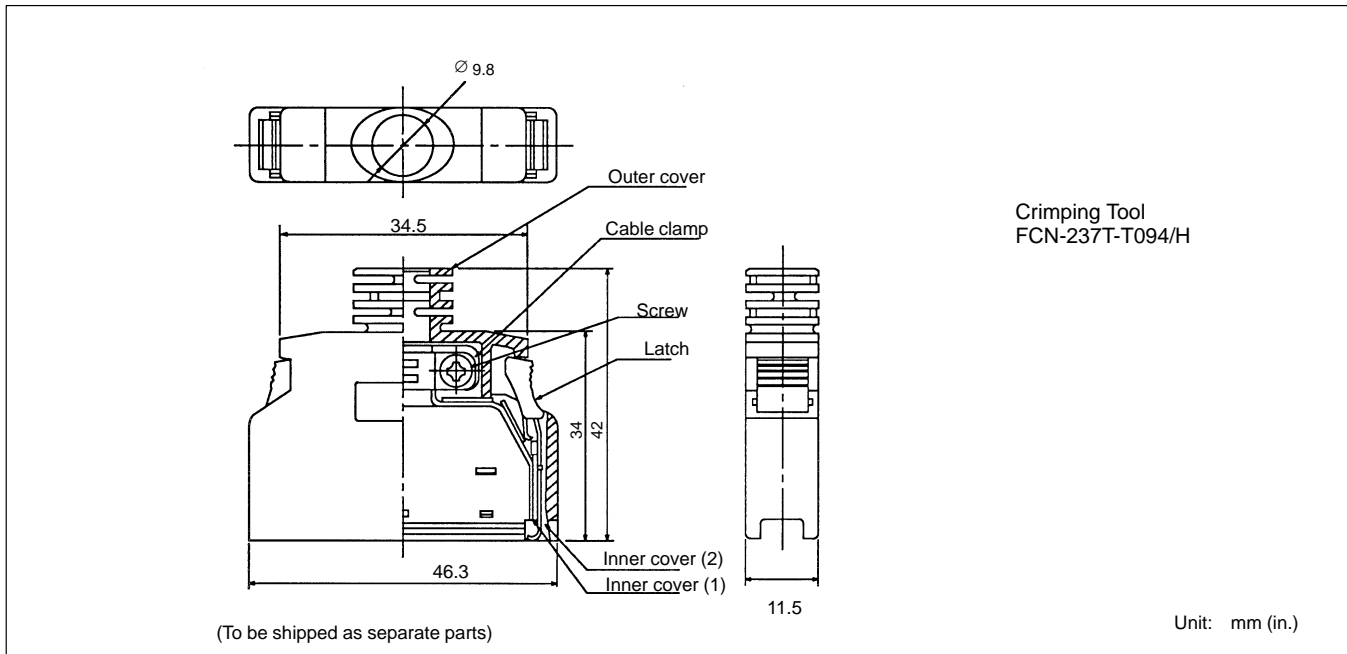
Head Assembly: :FCN-H550

Applicator: :FCN-A550-1/A-\*\*\* (\*\*\*: 020, 028, 036, 050, 068, 080)

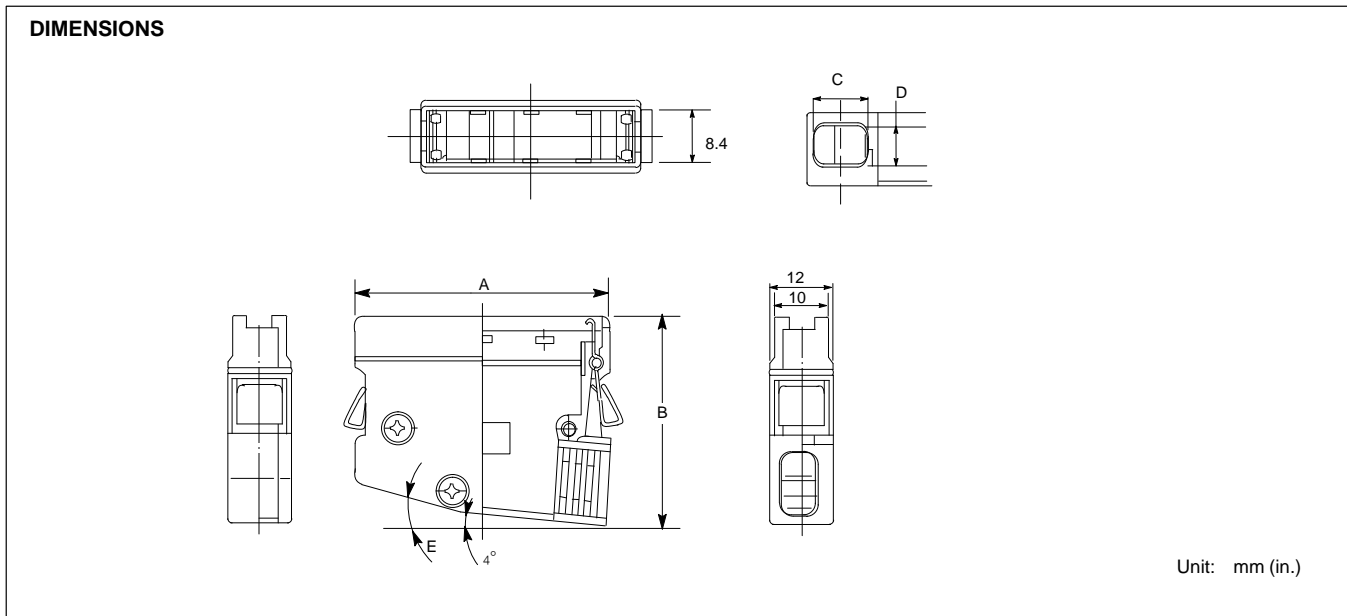
Stand: :FCN-D550

FCN-230C050-E/SC

[Covers have built-in cable strain relief]



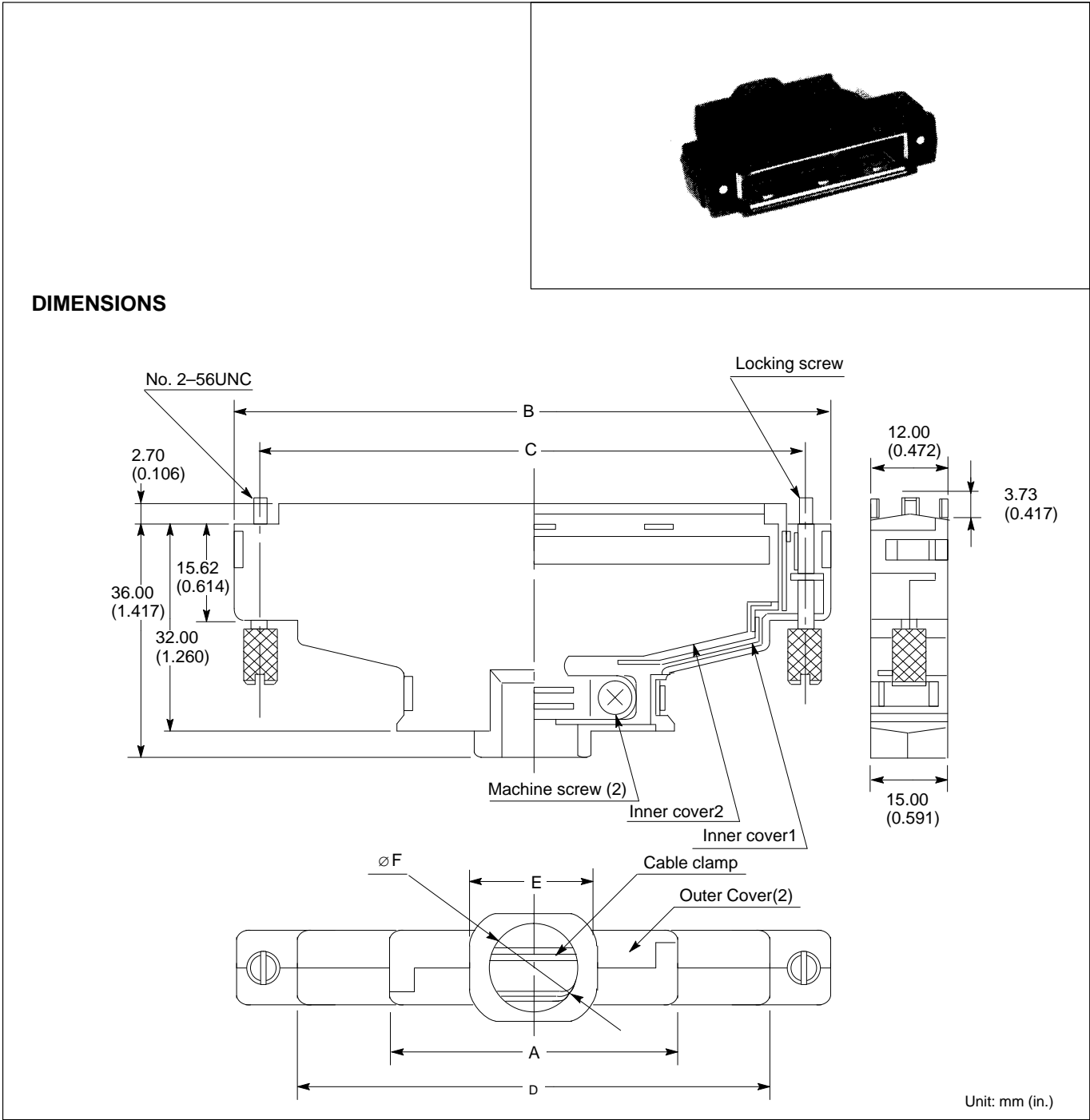
[Covers have built-in cable strain relief]



**PART NUMBERS**

No. of Contacts	Part Number	Dimensions				
		A	B	C	D	E
40	FCN-230C040-L/E	41.65	33.80	10.60	6.34	19°
50	FCN-230C050-L/E	48.00	35.50	11.38	6.70	15°

FCN-230C\*\*\*-E/S COVER FOR PLUG (MEETS SCSI III, IPI II/III STANDARDS)

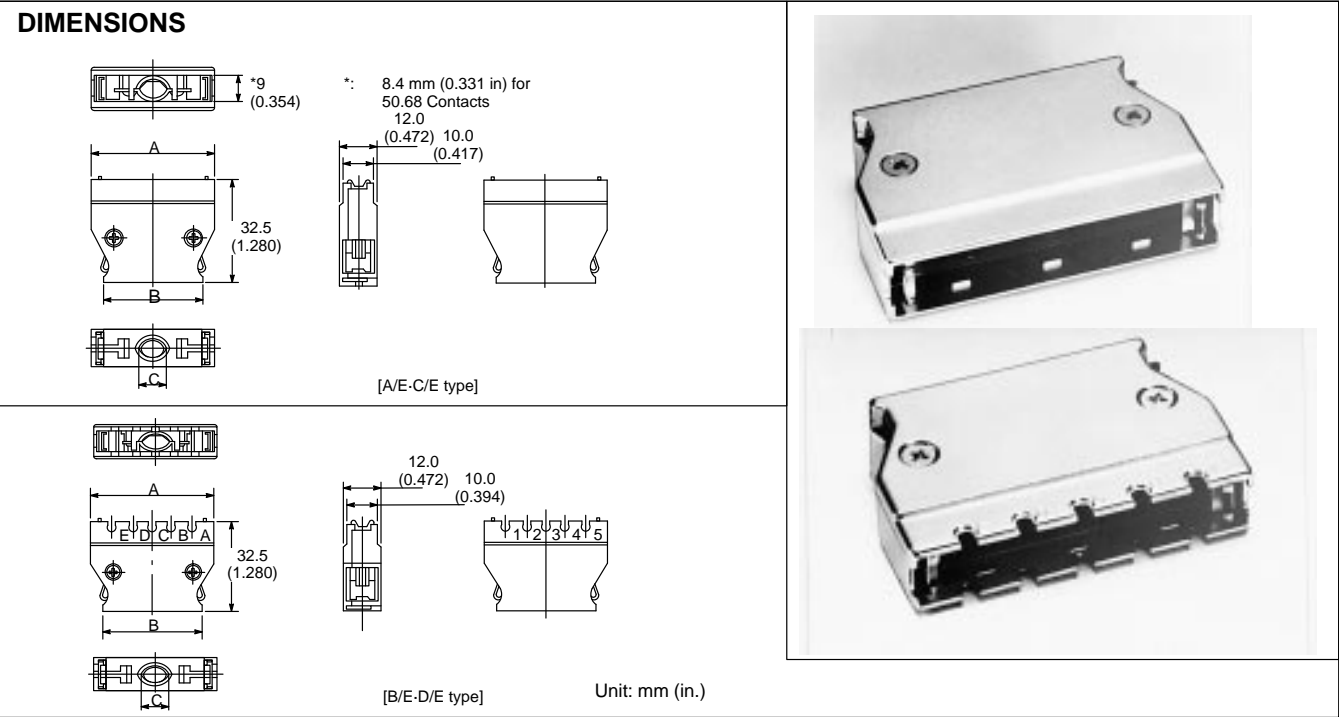


PART NUMBERS

Pin No.	Part Number	A	B	C	D	E	F
50	FCN-230C050-E/S	35.00 (1.378)	54.00 (2.126)	46.48 (1.830)	35.00 (1.378)	15.00 (0.606)	10.50 (0.413)
68	FCN-230C068-E/S	38.40 (1.512)	66.41 (2.575)	57.91 (2.280)	46.43 (1.828)	—	14.00 (0.551)
100	FCN-230C100-E/S	42.00 (1.654)	85.73 (3.375)	78.23 (3.080)	66.75 (2.678)	17.00 (0.669)	13.00 (0.512)



FCN-230C\*\*\*-\*/E METAL COVER



PART NUMBERS

No. of Contacts	Part Number	Dimensions		
		A	B	C
20	FCN-230C020-A/E	28.95(1.140)	11.43 (0.450)	6.5 4.5 (0.256 0.177)
	FCN-230C020-C/E			8.5 8.2 (0.335 0.323)
	FCN-230C020-B/E			6.5 4.5 (0.256 0.177)
26	FCN-230C026-C/E	32.76(1.1290)	24.96(0.983)	7.2 8.5 (0.283 0.335)
28	FCN-230C028-A/E	34.03(1.340)	26/23 (1.033)	6.50 6.0 (0.256 0.236)
	FCN-230C028-C/E			8.5 7.2 (0.335 0.283)
	FCN-230C028-B/E			6.50 6.0 (0.256 0.236)
36	FCN-230C036-A/E	39.11 (1.540)	31.31 (1.233)	9.5 8.0 (0.374 0.315)
	FCN-230C036-B/E	39.11 (1.540)	31.31 (1.233)	9.5 8.0 (0.374 0.315)
	FCN-230C036-C/E	39.11 (1.540)	31.31 (1.233)	9.0 10.0 (0.354 0.394)
40	FCN-230C040-C/E	41.15 (1.639)	33.85 (1.334)	8.0 10.6 (0.315 0.417)
50	FCN-230C050-A/E	48.00 (1.890)	40.20 (1.583)	8.5 7.0 (0.334 0.276)
	FCN-230C050-C/E			9.7 10.0 (0.382 0.394)
	FCN-230C050-D/E			14.7 10.4 (0.579 0.409)
	FCN-230C050-B/E			8.5 7.0 (0.335 0.276)
68	FCN-230C068-A/E	59.43 (2.340)	51.63 (2.033)	9.0 8.0 (0.354 0.315)
	FCN-230C068-C/E			10.0 9.7 (0.394 0.354)
	FCN-230C068-D/E			14.7 10.4 (0.579 0.409)
	FCN-230C068-B/E			9.0 8.0 (0.354 0.315)
80	FCN-230C080-D/E	67.05 (2.640)	59.25 (2.333)	9.0 10.0 (0.354 0.394)
96	FCN-230C096-C/E	77.21 93.040)	69.41 (2.733)	9.0 11.5 (0.354 0.453)
	FCN-230C096-D/E			

FCN-230KXXX POLARIZATION GUIDE

PART NUMBERING FOR POLARIZATION GUIDE  
VARIATIONS

FCN-230K0XX#  
(1) (2)

(1) △ : Enter the number (1, 2, 3, 4, 5) corresponding to the desired snapped nail position on the lower edge.

(2) ○ : Enter the letter (A, B, C, D, E) corresponding to the desired snapped nail position on the upper edge.

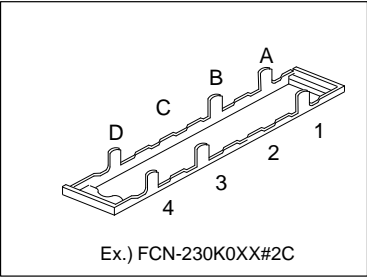
PART NUMBERING FOR POLARIZATION COVER  
VARIATIONS (WITH RIVET)

FCN-230C0XX-B/E#  
-D/E (1) (2)

(1) △ : Enter the number (1, 2, 3, 4, 5) corresponding to the desired rivet position on the lower plate.

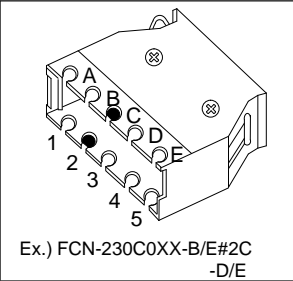
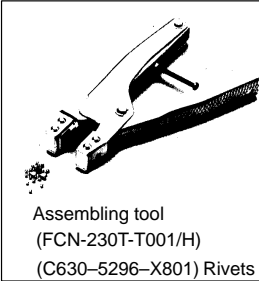
(2) ○ : Enter the letter (A, B, C, D, E) corresponding to the desired rivet position on the upper plate.

When you buy rivet separately, please assemble it by using the following tool.



Designation of standard hollow position with rivet.

No. of contacts	Designation			
20-contacts	1B	1C	2A	3A
28-contacts	1D	2C	3B	4A
36-contacts	1D	2C	3B	4A
50-contacts	1E	2D	4B	5A
68-contacts	1E	2D	4B	5A



Polarization key arrangement

20-contacts

28•36-contacts

50•68-contacts

PART NUMBERS

No. of Contacts	Part Number	Dimensions	
		A	C
20	FCN-230K020	32.60 (1.283)	27.40 (1.079)
28	FCN-230K028	37.70 (1.484)	32.48 (1.279)
36	FCN-230K036	42.80 (1.685)	37.60 (1.480)
50	FCN-230K050	51.70 (2.035)	46.45 (1.829)
68	FCN-230K068	63.10 (2.484)	57.88 (2.279)

DIMENSIONS

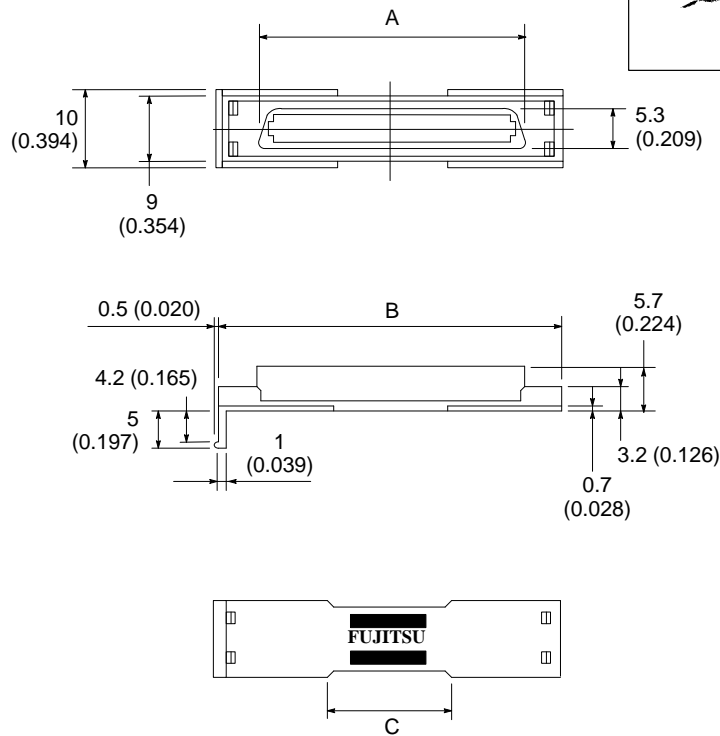
Screw ( \* )

( \* ) 2 screw attached

Unit: mm (in.)

# FCN-230Cxxx-21 DUST CAP FOR BOARD-PLUG

## DIMENSIONS



Unit: mm (in.)

## PART NUMBERS

No. of Contacts	Part Number	Dimensions		
		A	B	C
20	FCN-230C020-21	15.60(0.614)	25.50(1.004)	10.00(0.394)
28	FCN-230C028-21	20.68(0.814)	30.58(1.004)	10.00(0.394)
36	FCN-230C036-21	25.76(1.014)	35.66(1.404)	10.00(0.394)
50	FCN-230C050-21	34.65(1.364)	44.55(1.754)	15.00(0.591)
68	FCN-230C068-21	46.08(1.814)	55.98(2.204)	20.00(0.787)