

WHIZZARD[®]

3300 FAMILY



The Whizzard 3300 family of computer graphics systems combines top price/performance value with a high-resolution color raster display, 2D and optional 3D real-time dynamic transformations, multiple viewports, continuous zoom/pan and Megatek's proprietary Graphics Engine™ for high speed performance. This full-function graphics system supports a broad range of graphics applications, especially in the areas of mechanical and electronic CAD, AEC, simulation, and command and control.

The Whizzard 3355 includes Tektronix™ 4014 and VT™ 100 emulation as standard features. The RS-232C interface has its own 16-bit processor and 256K byte of local RAM, which performs local memory management. Megatek's communications interface supports data transfer rates up to 19.2K BPS. An optional IEEE-488 parallel interface is available.

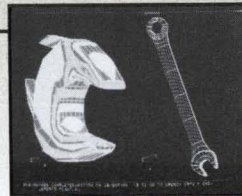
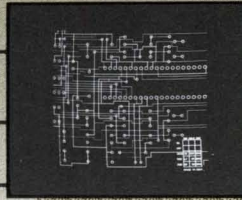
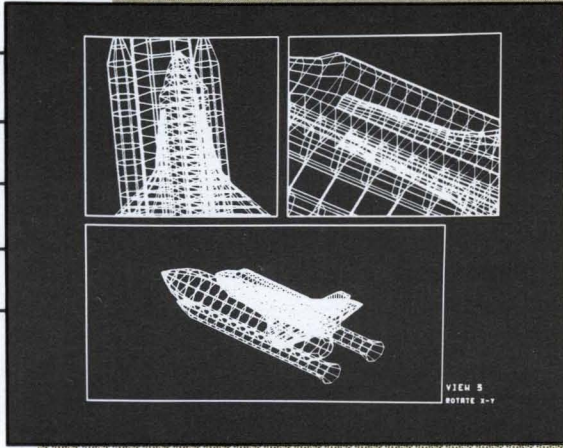
The Whizzard 3375 offers a Unibus™ DMA parallel interface that can provide communications speeds up to 1.5 megabytes per second.

The 3300s are software compatible with all Whizzard graphics systems through Megatek's WAND® and TEMPLATE™ software. WAND

features include multi-level functionality supporting 2D and 3D vector graphics, sophisticated memory management including CORE based segment and subroutines, and peripheral support for a wide range of interactive devices. A wide variety of third-party applications software is also available for use with the 3300 family.

WHIZZARD[®]

3300 FAMILY



Standard Features:

- 19" 1024 x 1024 Hz non-interlaced monitor
- 16 simultaneously displayable colors out of a possible 4096
- Complex 2D graphics transformations (rotate, translate, continuous scale, clip)
- 4096 x 4096 x 4096 virtual display space
- Ergonomic keyboard
- Hardware blink and dash patterns
- Tower module housing Megatek's Graphics Engine

Optional Features:

- Parallel IEEE-488 interface (3355 only)
- 3D hardware clip, rotate, scale, translate
- Surface fill processor
- Color hardcopy
- Additional vector memory
- Graphics tablet and digitizer
- Joystick
- Pick Module
- Function switches and control dials
- WAND software
- TEMPLATE software

For further information:

In CA, 800/824-4489 In USA, 800/854-1975

Headquarters

9645 Scranton Road
San Diego, CA 92121
619/455-5590
TWX: 910-337-1270

Western Regional Sales Office

Los Angeles, CA
213/215-3333

Eastern Regional Sales Office

Falls Church, VA
703/821-0445

Central Regional Sales Office

Dallas, TX
214/437-3800

Unibus and VT are trademarks of Digital Equipment Corporation. Tektronix is a registered trademark of Tektronix Corporation. Whizzard and TEMPLATE are registered trademarks of Megatek Corporation. Graphics Engine, Megatek and WAND are trademarks of Megatek Corporation.

Printed in U.S.A. © 1985 MEGATEK CORPORATION