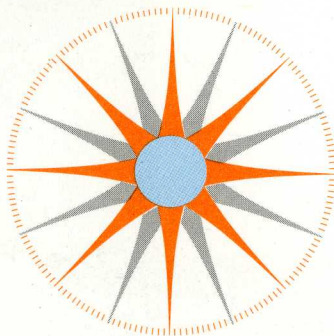
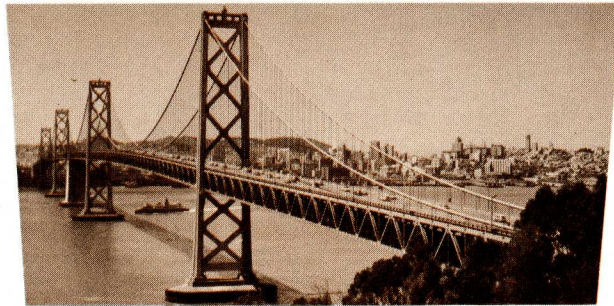
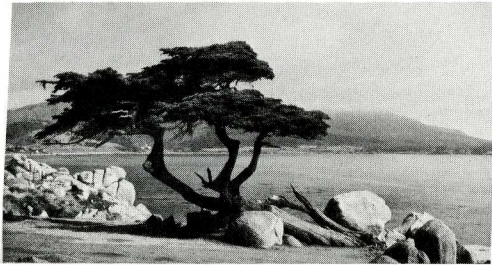
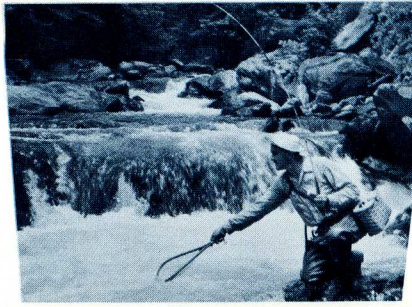
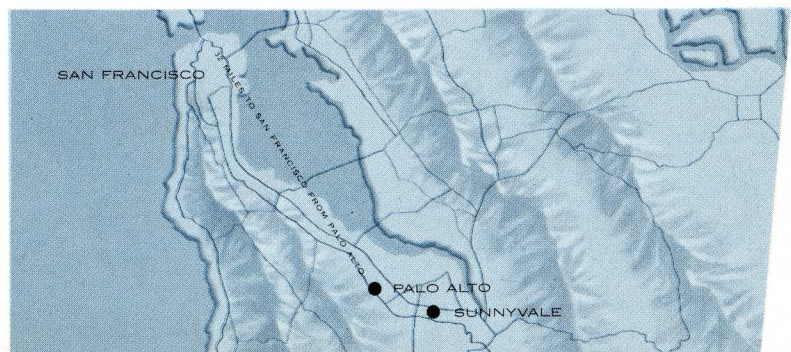
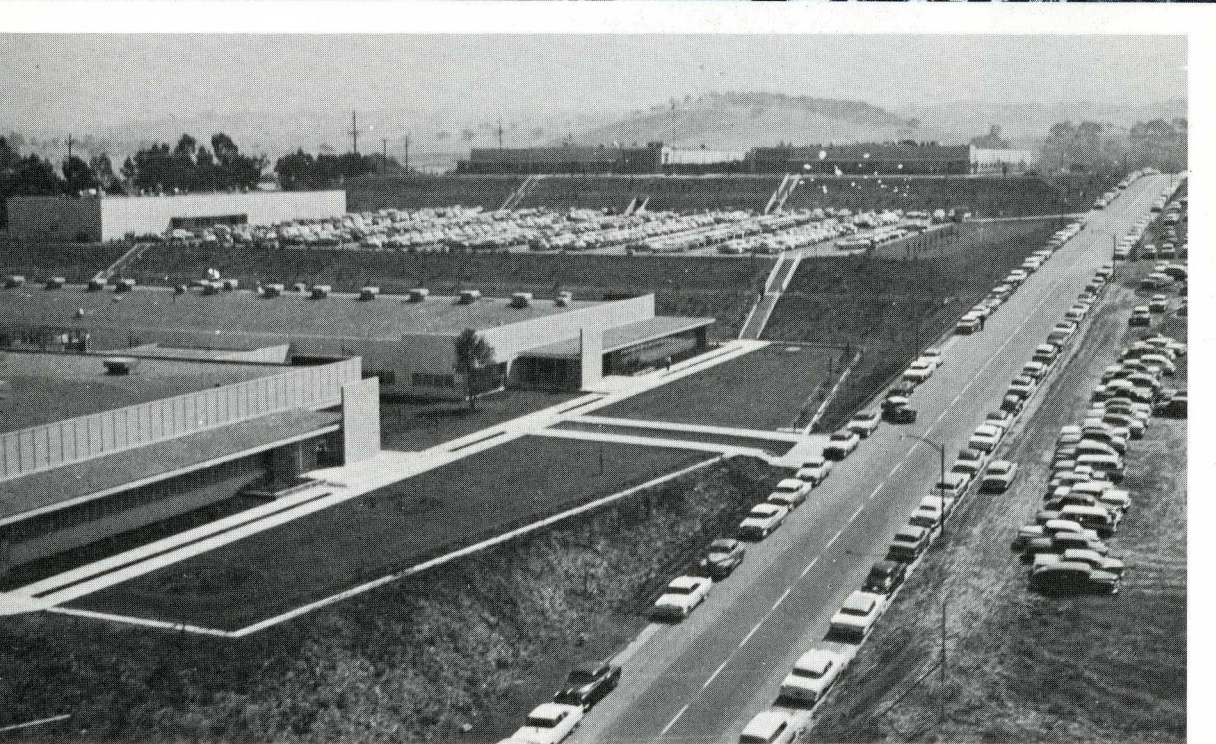
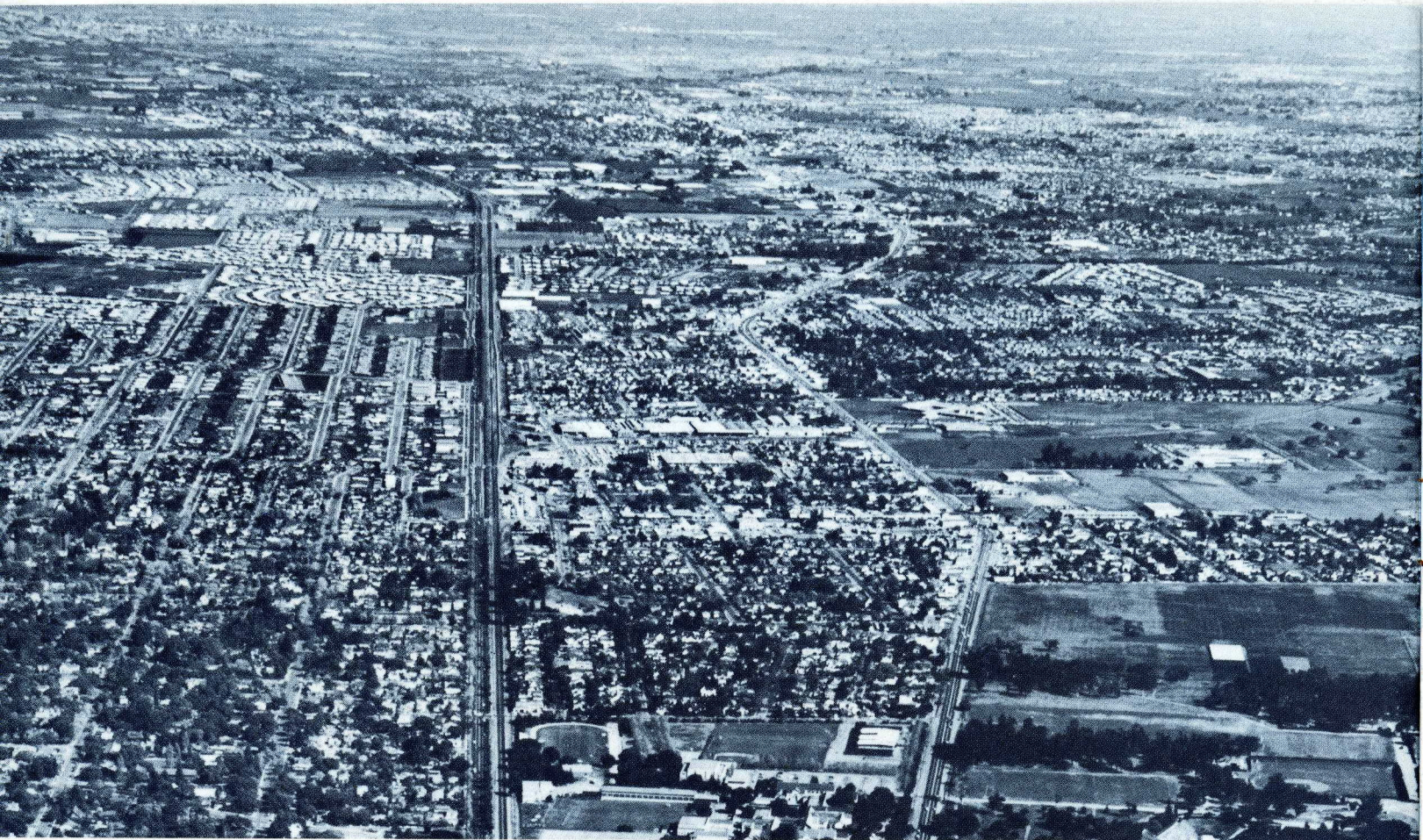


**HOME
LIFE
IN
CALIFORNIA'S
SANTA CLARA
VALLEY**



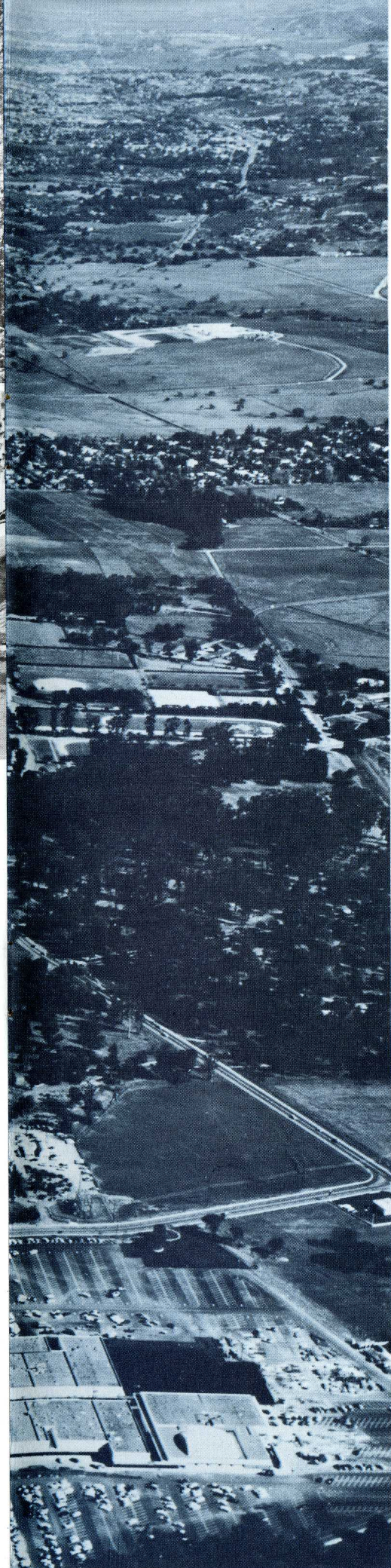
LOCKHEED MISSILE SYSTEMS DIVISION





LOCKHEED MISSILE SYSTEMS DIVISION, PALO ALTO, CALIFORNIA





■
In 1955, when our expansion program at Lockheed Missile Systems Division required new facilities, we searched across the country for the ideal community in which scientists and engineers would find living and working conditions to their fullest satisfaction.

In our quest, we sought a well-planned community which combined these elements :

... a scientific environment offering friendship and association with scientists and engineers in allied fields ;

... nearby universities where Lockheed staff members could advance their education when desired and enjoy the stimulus of an academic atmosphere ;

... a mild, pleasant climate which would attract scientists, engineers and their families ;

... an area permitting a wide choice of home life in rustic, suburban and metropolitan neighborhoods ;

... attractive sites where spacious, modern engineering and research facilities could be established and where enough land was available to permit continued expansion ;

... a well-developed system of schools and churches ;

... a wide choice of recreational areas, near and far.

We found such an area on the San Francisco Peninsula in the Santa Clara Valley, depicted and described in this brochure.

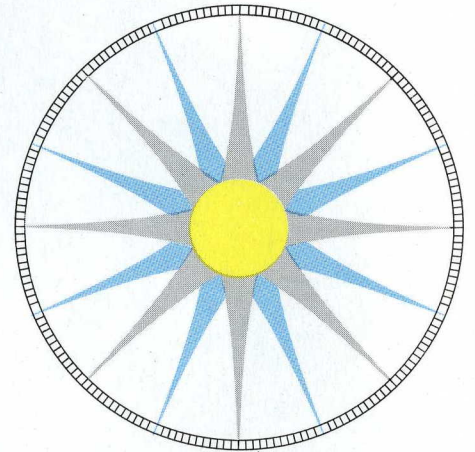
One of the many advantages of the Sunnyvale-Palo Alto region is the planned nature of the industrial area. Set apart from residential sections, it blends into hills and fields. Here are no pluming smokestacks or grimy factories but modern structures where engineers and scientists perform research and development in a wide range of professional areas.

Two sites—Sunnyvale and Palo Alto—in the northern portion of the Santa Clara Valley were selected for Lockheed's expanding research and development program. Today most Lockheed families live within a 10-mile radius of the two sites in one of the residential communities in that part of the Valley.

San Francisco is but an hour to the north, at the tip of the Peninsula.

To the south, 45 minutes distant, soar giant Redwoods in Big Basin and Portola State Parks. An hour away beats the Pacific surf at Santa Cruz, and not much further to the south you find the picturesque Carmel-Monterey seaside communities.

Four hours to the east rise the beautiful Sierra Nevada mountains with their deep-cleft valleys and gorges, countless lakes, streams and glaciers.

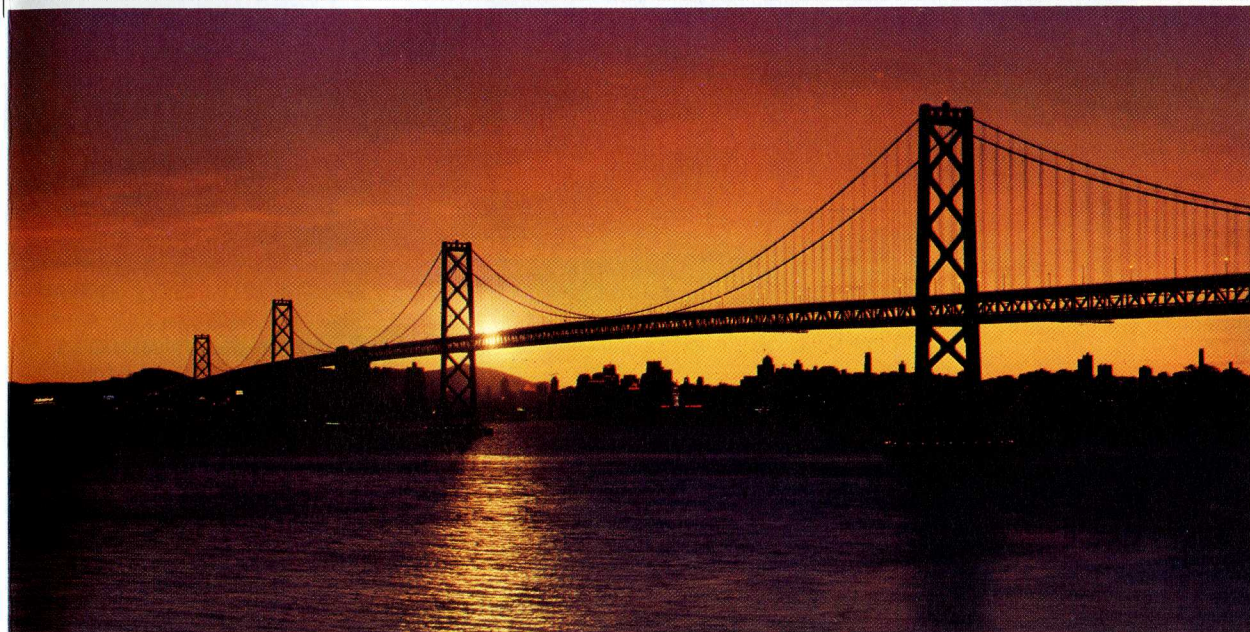


Wind-carved cypress trees look down on Carmel surf. Huge coastal redwoods provide picnicking and hiking.

And at hand, within the Santa Clara Valley, there are modern universities, schools, shopping centers, and a wide range of living and recreational modes—all in a climate free of harsh extremes in summer and winter.



Looking down on Santa Clara Valley from Santa Cruz Mountains. In distance – San Francisco Bay, northeastern boundary of Santa Clara Valley.



San Francisco-Oakland Bay Bridge frames San Francisco skyline.

homes

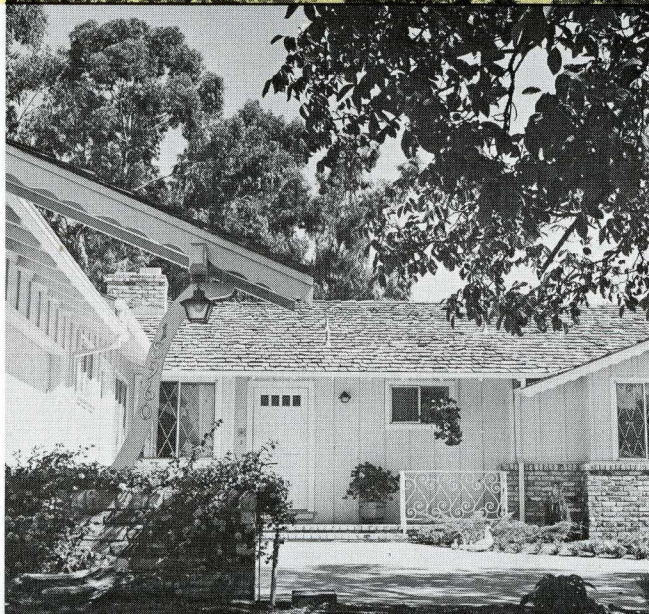
The northern portion of the Santa Clara Valley is a land of residential communities set among cherry and apricot orchards, along the fringes of the Santa Cruz Mountains and in the level floor of the Valley.

One of the most striking features of the Valley is the wide choice of homes and communities it offers. Well-planned subdivisions are numerous and varied in price and architecture. For those who wish to build, the Valley and bordering hills provide scenic sites to suit every taste.

Shown on these pages are four typical homes from four of the Valley communities. They range in price from \$15,000 to \$24,000.

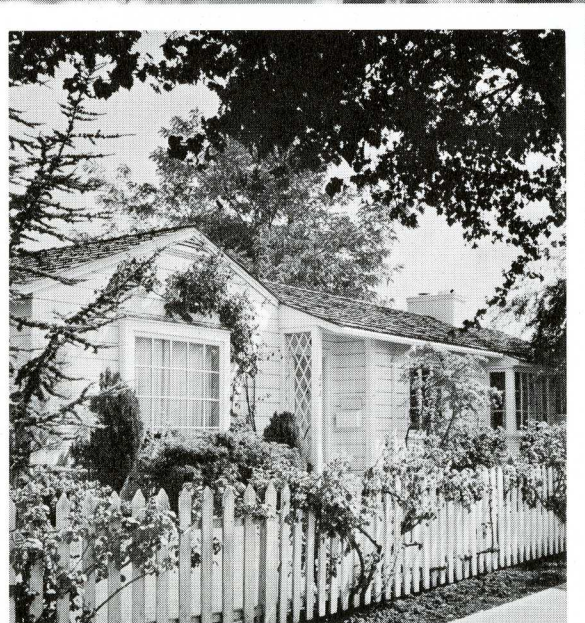


A Los Altos home – a community close to the Santa Cruz Mountains.



A Cupertino home. Map on pages 16 and 17 shows location of Valley communities.

A wide-limbed oak tree shades a Mountain View home (*at right*). Trees, shrubs, flowers thrive in fertile, black soil and sunshine of the Valley. In the insert at right is a Palo Alto home on one of the typically quiet streets of that university town.





Lockheed families frequently live in apartment houses such as these, either as permanent residences or while they are getting settled in their own home. Apartments on this page rent from \$90.00 to \$135.00 unfurnished.



Two Menlo Park apartment houses are pictured at left. Apartments in Colonial-style house include two bedrooms, living room, tile bathroom, kitchen, laundry with washer and dryer for tenants and garage. The second apartment house offers one and two bedrooms, living room, colored tile bathroom, electric kitchen, separate patio for each apartment and garage.

A Mountain View apartment house (*below*). Apartments in this house include bedroom, living room, tile bathroom, hardwood floors, kitchen, laundry room and garage.





A contemporary home of a type frequently seen in the Valley. Many families express themselves through their homes — modern, ranch style, early American, Spanish or whatever their taste may be.



Here Physicist Ed Stearns turns his talents from inertial guidance to barbecuing. Harriett Stearns keeps a weather eye on the amateur while son Bob, 9, sets the table. The Stearns bought their home in Menlo Park, 15 minutes from Ed's Sunnyvale office.

now let's look at Lockheed Missile families at home

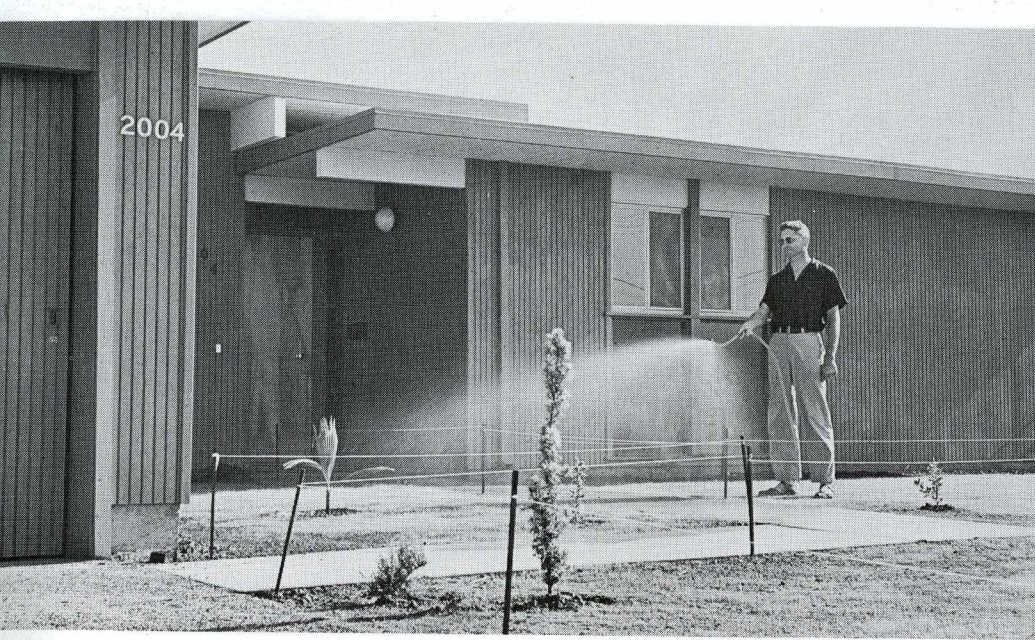


Son Larry, 11, volleys with Ed. Mild climate makes patio and backyard activities important to Valley life.



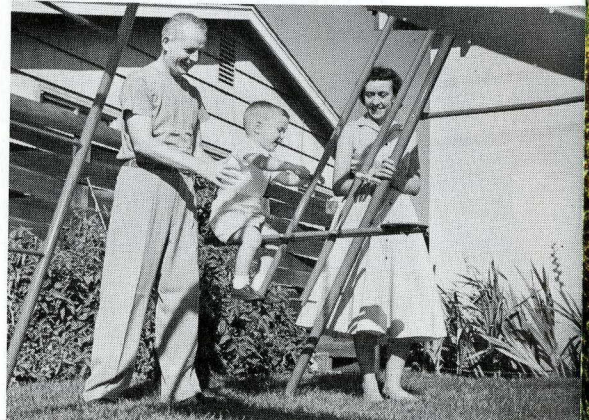
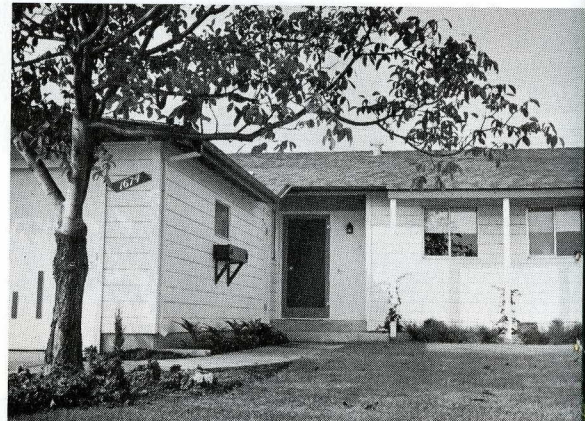
Reliability Engineer Carl Lindberg joins his family in after-hours relaxation. Three growing sons – Dennis, 10, Gerald, 8, and Paul, 3 – have lots of romping room in the backyard. Flora Lindberg keeps it all in tip-top shape.

Bicycling is a favorite pastime with the Lindbergs. Quiet streets, wooded parks provide new cycling horizons from week to week. The Lindbergs rent their home in Los Altos, approximately 15 minutes from Sunnyvale.



Watering the lawn is a pleasant, early evening pastime for Dr. Horace Jacobs at left. Newly-planted lawns and shrubs grow quickly in rich Valley soil. He is engaged in linguistic reports at the Palo Alto Research Laboratory. It's a 10-minute drive to work from his Palo Alto home.

Charles F. Hummel receives instructions from son, Ronnie, on the correct method of operating a lawnmower. He is a member of the Electronics Department staff at the Palo Alto Research Laboratory, 10 minutes from his Mountain View home. The Hummel home is shown below right. In the lower picture, Clare Hummel joins dad and son in backyard play.





Mrs. Elaine Doersam and daughter, Judy, prepare dinner in their Los Altos home. Roomy kitchen is a pleasure to mother and daughter. Judy, 15, attends Los Altos High School.

Phil Doersam is a staff scientist at the Palo Alto Research Laboratory, a 12-minute drive from his home. An exterior view of the Doersam home is shown at left.

Evening time is Hi-Fi time for Dr. Jobe Jenkins and his wife, Jean, in their Palo Alto home (*below*). The home reflects Jean's artistic bents. She is an exhibiting artist in ceramics, sculpture and jewelry. Jobe is a member of the Systems Analysis Department at the Palo Alto Research Laboratory. It takes him 10 to 12 minutes to reach his office.

The Stearns, Lindberg, Jacobs, Hummel, Doersam and Jenkins families share an important advantage of Santa Clara Valley life: schools, churches, shopping centers and work are close at hand.



shopping centers

Shopping centers are close and complete in the Santa Clara Valley. Department stores and supermarkets combine with specialty shops to make shopping an adventure in variety and bargains. When you desire a change, the leisurely pace of Valley shopping can be exchanged for the metropolitan bustle of San Francisco. The centers shown are representative of the Valley.



Los Altos Rancho Shopping Center. Rustic motifs such as this are found frequently in the Valley.



The Stanford shopping center (*at left*) is located at the entrance to Stanford University.

Blossom Plaza (*at right*) is one of the newest shopping centers in the Santa Clara Valley.

Harriett Stearns shops for Danish china in the J. Christian of Copenhagen shop in Town and Country Village in Palo Alto (*below left*). There are more than 60 shops specializing in everything from cutlery to tropical fish in the Village.

Flora Lindberg and Paul replenish the pantry in a Palo Alto market (*below right*). Wide aisles and large variety of stocks are typical of California supermarkets. Vegetables and fruits are freshly picked from nearby farms.



One of the most cosmopolitan cities, San Francisco offers a charm and atmosphere distinctly its own. Like the Santa Clara Valley, it is complete in itself — a city of virtually unlimited cultural, shopping, recreational and business opportunities. It is an hour's drive from the heart of the Valley. Cable cars such as one below are a trademark of this historic city.





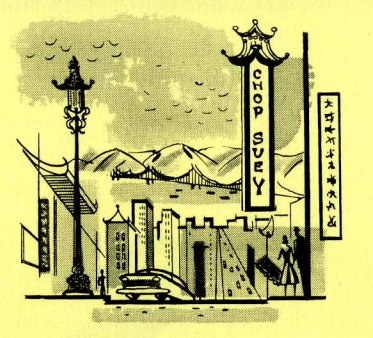
San Francisco's Montgomery Street is the West's financial center (*above*). It intersects with nearby Market Street, main thoroughfare of San Francisco.

San Francisco spreads beneath glass-walled lounge of "Top of the Mark" (*at right*). In distance - San Francisco Bay Bridge reaches across to Oakland and Berkeley, site of University of California.

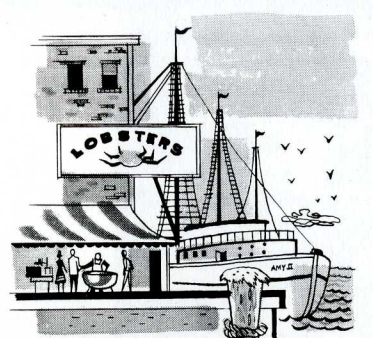




RUSSIAN RIVER COUNTRY
3 HOURS



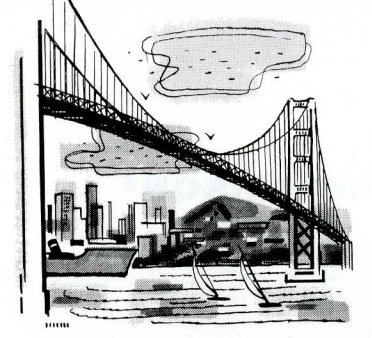
CHINATOWN - SAN FRANCISCO
1 1/4 HOURS



FISHERMAN'S WHARF - SAN FRANCISCO
1 1/4 HOURS



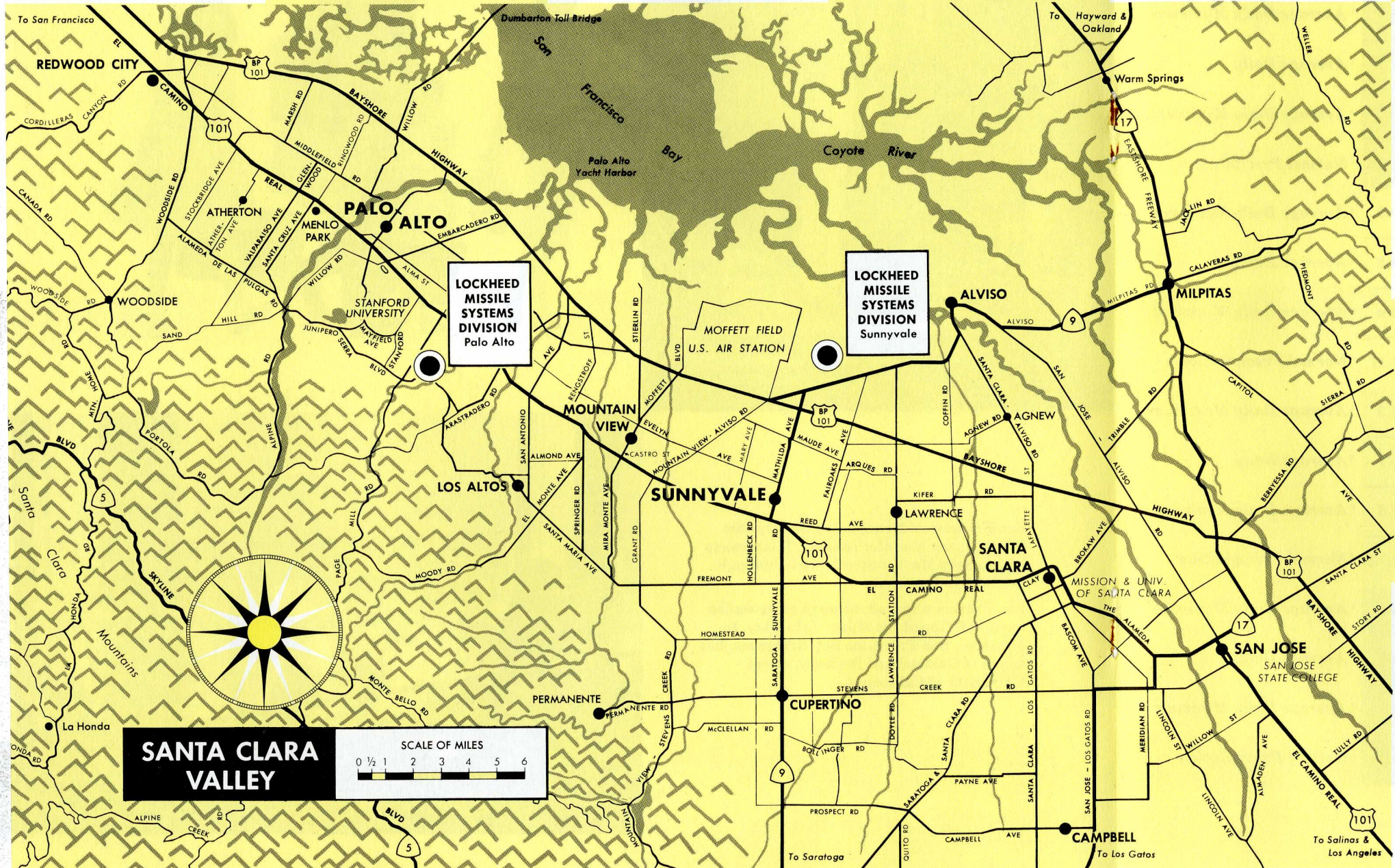
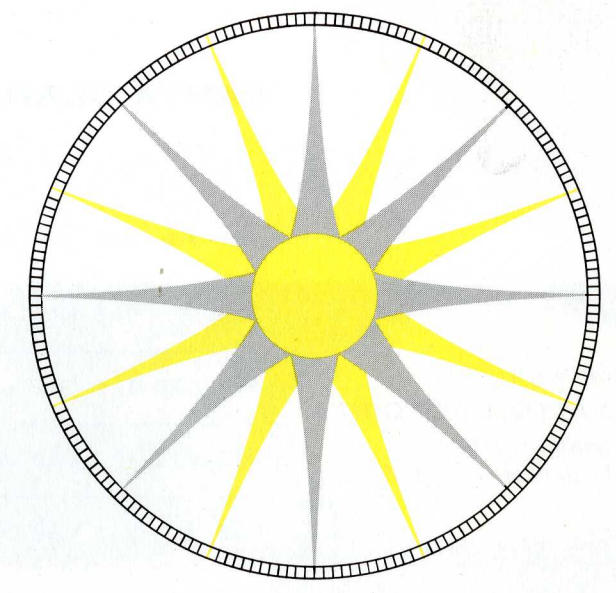
STATE CAPITOL - SACRAMENTO
3-3 1/2 HOURS



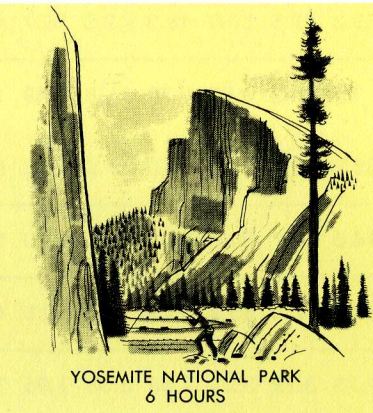
GOLDEN GATE BRIDGE - 1 HOUR
SAN FRANCISCO BAY - 10 MINUTES



HIGH SIERRA WINTER PLAYGROUND
5-6 HOURS



LAKE TAHOE RESORTS
5 HOURS



YOSEMITE NATIONAL PARK
6 HOURS



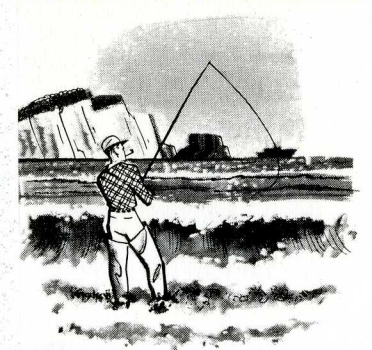
MOTHER LODGE COUNTRY
4 HOURS

Santa Clara Valley—a land of homes, orchards, shopping centers, churches, schools, universities, parks, industries, research laboratories, and a gentle climate.

The Valley extends 60 miles south of the San Francisco Bay, but this brochure is concerned primarily with the northern end of the Santa Clara county at the foot of the San Francisco Peninsula. Here, between San Jose on the south and Redwood City on the north, live most of the Lockheed families.

Further to the north lies San Francisco. To the south, the Valley opens up into rich farmlands with thousands of acres of orchards. Mountains flank the Valley east and west with the San Francisco Bay forming the north-east border.

And fanning out from the heart of the Valley are highways and roads leading to virtually every form of recreational and cultural activity—all within a short drive.



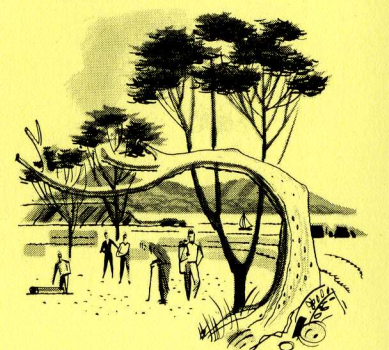
SURF FISHING - CALIFORNIA COAST
1 HOUR



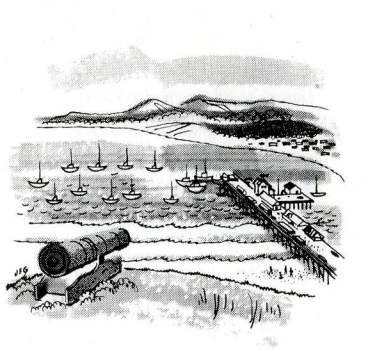
BIG BASIN REDWOODS
3/4 HOUR



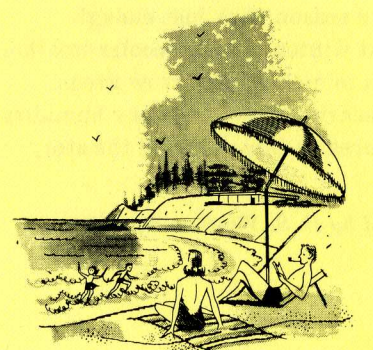
SAN CARLOS MISSION - CARMEL
2 1/4 HOURS



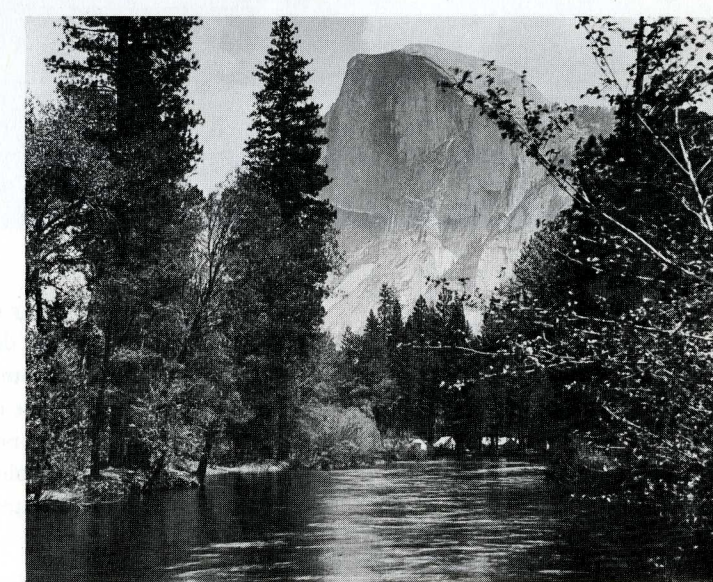
THE "17 MILE DRIVE" - MONTEREY
2 HOURS



FISHERMAN'S WHARF - MONTEREY
1 1/2 HOURS



SANTA CRUZ BEACH
1 HOUR



Merced River and Half Dome, Yosemite National Park.

SANTA CLARA VALLEY CLIMATE: A COMPARISON*

JAN FEB MAR APR MAY JUNE JULY AUG SEPT OCT NOV DEC ANN

<p><i>Elevation: 57 Feet.</i> PALO ALTO, CALIFORNIA <i>Latitude: 37°26' N.</i> <i>Longitude: 122°10' W.</i></p>	55.8 59.7 63.8 67.5 71.9 76.4 77.8 76.7 76.8 71.9 64.7 56.9 68.3	¹ <i>Average Daily Maximum</i>
	46.6 50.0 53.2 56.2 60.0 63.9 65.6 65.0 64.0 59.9 53.3 47.9 57.1	² <i>Average Daily</i>
	37.3 40.4 42.7 45.0 48.0 51.4 53.4 53.3 51.4 47.7 41.9 39.0 46.0	³ <i>Average Daily Minimum</i>
	3.28 3.04 2.13 0.97 0.47 0.13 0.01 0.03 0.25 0.74 1.48 2.93 15.46	⁴ <i>Normal Precipitation</i>
<p><i>Elevation: 95 Feet.</i> SAN JOSE, CALIFORNIA <i>Latitude: 37°20' N.</i> <i>Longitude: 121°54' W.</i></p>	57.5 61.0 64.8 68.8 72.5 77.6 80.6 80.0 79.2 73.7 66.1 58.2 70.0	¹ <i>Average Daily Maximum</i>
	48.1 51.5 54.2 57.1 60.3 64.5 67.2 66.8 65.6 61.0 54.4 49.0 58.3	² <i>Average Daily</i>
	38.9 41.9 43.5 45.3 48.1 51.4 53.8 53.5 52.0 48.3 42.8 39.7 46.6	³ <i>Average Daily Minimum</i>
	2.77 2.49 2.40 1.09 0.50 0.11 T 0.02 0.25 0.70 1.35 2.49 14.17	⁴ <i>Normal Precipitation</i>
<p><i>Elevation: 610 Feet.</i> CHICAGO, ILLINOIS <i>Latitude: 41°47' N.</i> <i>Longitude: 87°45' W.</i></p>	32.7 35.0 45.0 57.6 69.7 80.0 85.3 83.0 75.9 64.3 47.6 35.3 59.3	¹ <i>Average Daily Maximum</i>
	24.9 27.4 37.0 48.1 59.2 69.4 74.6 72.7 65.6 54.1 39.5 28.0 50.1	² <i>Average Daily</i>
	17.1 19.8 29.0 38.6 48.7 58.8 63.9 62.3 55.2 43.9 31.3 20.6 40.8	³ <i>Average Daily Minimum</i>
	1.84 1.41 2.85 2.82 3.66 4.15 2.73 3.19 3.23 2.56 2.33 1.95 32.72	⁴ <i>Normal Precipitation</i>
<p><i>Elevation: 10 Feet.</i> NEW YORK CITY, N. Y. <i>Latitude: 40°42' N.</i> <i>Longitude: 74°01' W.</i></p>	39.9 40.1 48.5 57.9 69.0 77.07 82.3 80.4 74.5 64.5 53.0 42.4 60.9	¹ <i>Average Daily Maximum</i>
	32.9 32.7 40.7 49.8 60.8 69.8 74.6 73.2 67.3 57.0 46.3 35.7 53.4	² <i>Average Daily</i>
	25.8 25.3 32.8 41.7 52.5 61.8 66.9 66.0 60.1 49.5 39.5 28.9 45.9	³ <i>Average Daily Minimum</i>
	3.46 3.13 3.56 3.22 3.51 3.70 4.24 4.34 3.67 3.04 3.09 3.07 42.03	⁴ <i>Normal Precipitation</i>

The Santa Clara Valley climate provides a daily bonus in better living. It's best described as mild and pleasant. There's a gradual transition from season to season with just enough warm weather to make a pleasant winter; enough cooler weather to make a mild winter; enough rain to make lawns grow green, flowers and orchards bloom. No searing heat; no heavy humidity; no biting cold. The comparative figures on this page tell the story.

¹Based on 28 years of record

²Based on 40 years of record

³Based on 44 years of record

⁴Based on 77 years of record

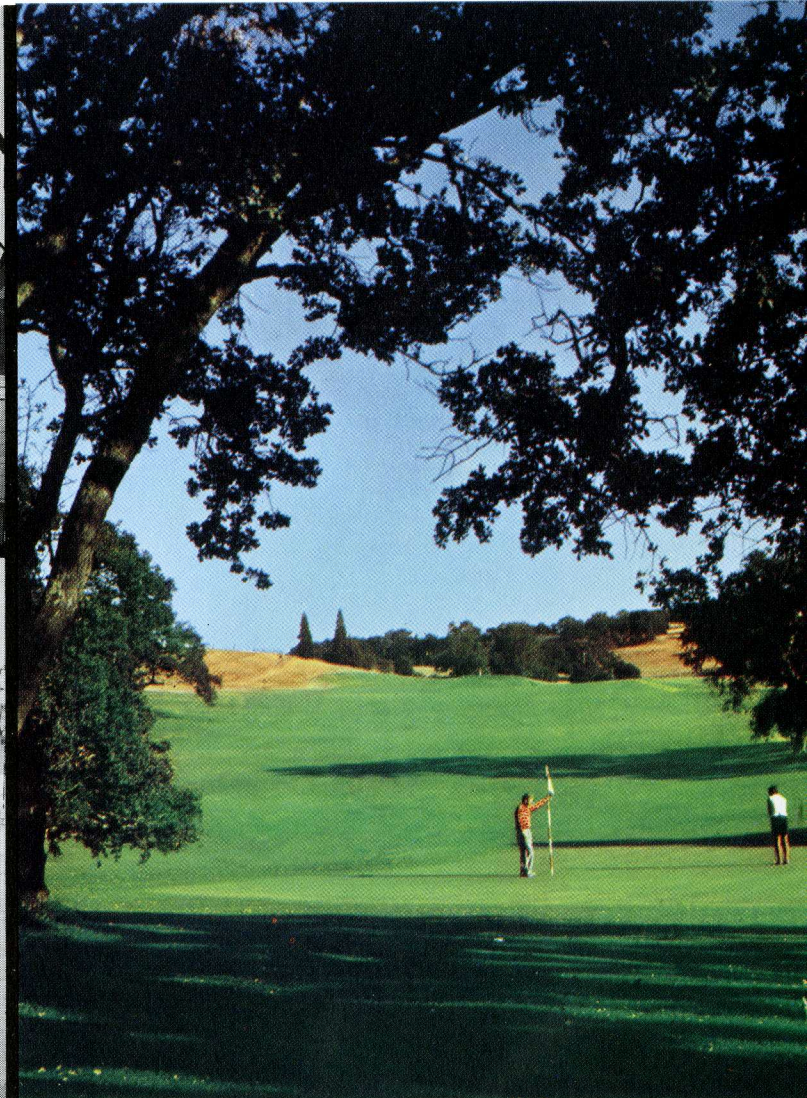
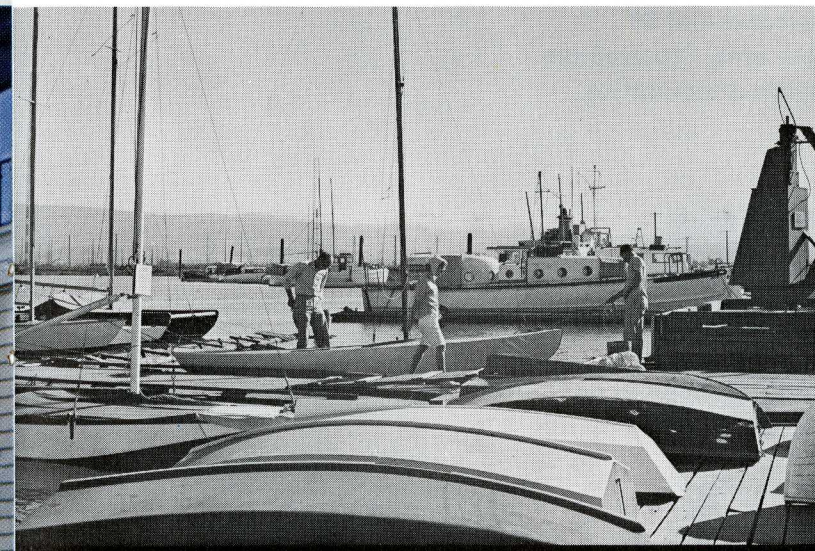
*Climatological summaries prepared by U. S. Weather Bureau

⁵Based on 29 years of record

Rolling hills, green fairways, shady trees and the lurking sand trap make pursuit of par both pleasant and challenging. Golf, like all outdoor activities, flourishes in Santa Clara Valley. Golfers (*below right*) are at the 18th hole on the Stanford course.

Palo Alto Yacht Harbor (*below left*) is headquarters for Valley "salts." Fresh water sailing is also available.

Children splash beneath watchful eye of lifeguard at Washington Park pool in Sunnyvale (*bottom left*). Pools and parks throughout the Valley offer small fry safe, healthy recreation.





First Church of Christ
Scientist in Los Altos

churches

Churches have filled an important role in Santa Clara Valley from days when Spanish Padres trod the historic El Camino Real in 1777. There are more than 200 churches and 30 different denominations in the area. Pictured are some of the churches in various communities.



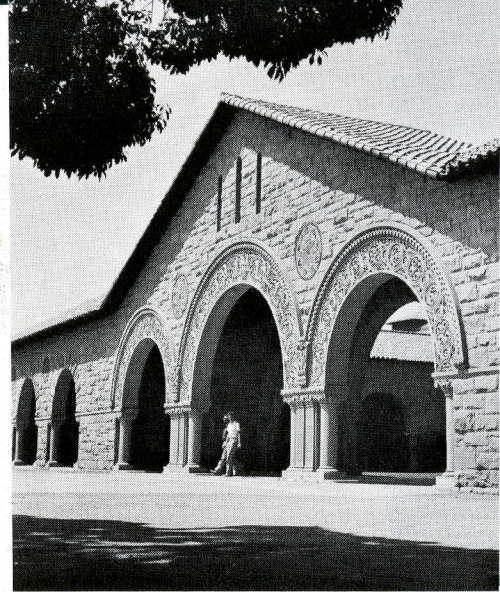
First Presbyterian
Church of Mountain View



Holy Trinity Episcopal
Church in Menlo Park



Mission Santa Clara,
founded in 1777 by
Spanish Padres.



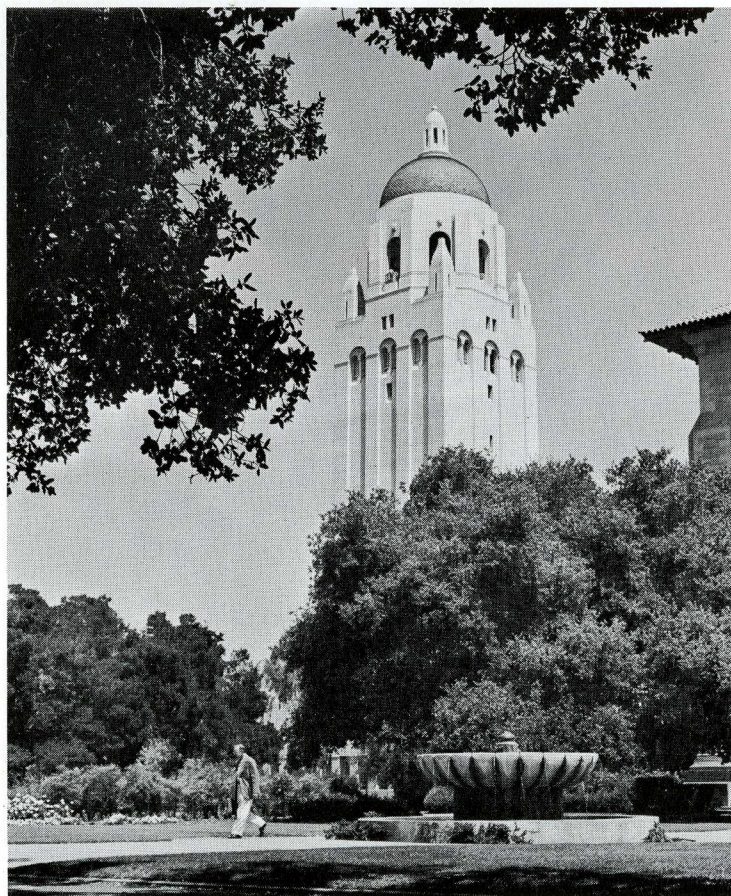
North Arch of Stanford's Inner Quadrangle



Main Library at Stanford

**universities
and schools**

Stanford University exerts a major influence in the lives and careers of Lockheed families. The Lockheed Research Laboratory is located in Stanford's Industrial Park, an area of gently rolling hills set aside by Stanford for orderly, light industrial growth. From their offices scientists and engineers look out on Stanford's famed Hoover Tower. One of the cultural centers of the Valley, Stanford is also a participating university in the company's Advanced Study Program, in which staff members attain M.S. and Ph.D. degrees while working at Lockheed.



Hoover Tower, Stanford's 285 foot landmark. It houses the Hoover Institute and Library on War, Revolution and Peace.

Venetian mosaics on Stanford's Memorial Church depict the Sermon on the Mount. Symbolic figures below represent Faith, Hope, Charity and Love. Among the unique mosaics inside is a reproduction of The Last Supper in the Sistine Chapel in Rome. The church is open to all denominations.

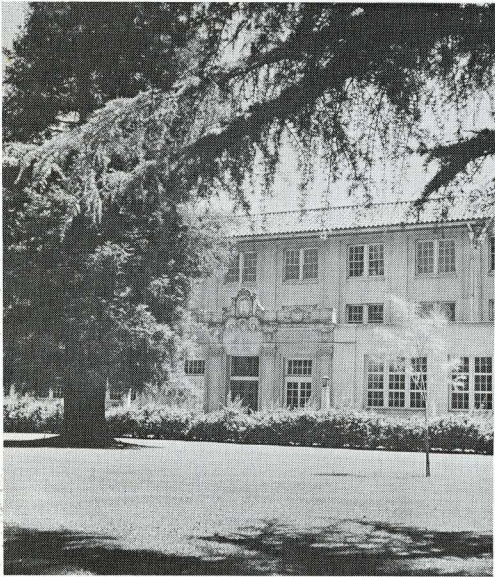


Scientists, engineers and students have their choice of many other colleges and universities in Santa Clara Valley and nearby areas.

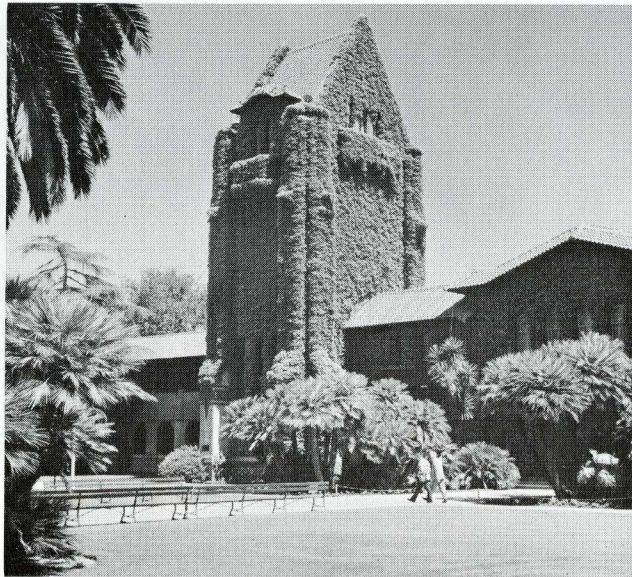
Ninety minutes away is the University of California in Berkeley, also one of the participating universities in Lockheed's Advanced Study Program. The University of San Francisco and other important educational institutions are close by.

Within the Valley itself are San Jose State College, founded in 1857, and the University of Santa Clara, founded by Jesuit scholars in 1851. It is an outgrowth of famed Mission Santa Clara.

The academic stimulus of these universities and colleges is felt throughout the Valley.



Kenna Hall at University of Santa Clara



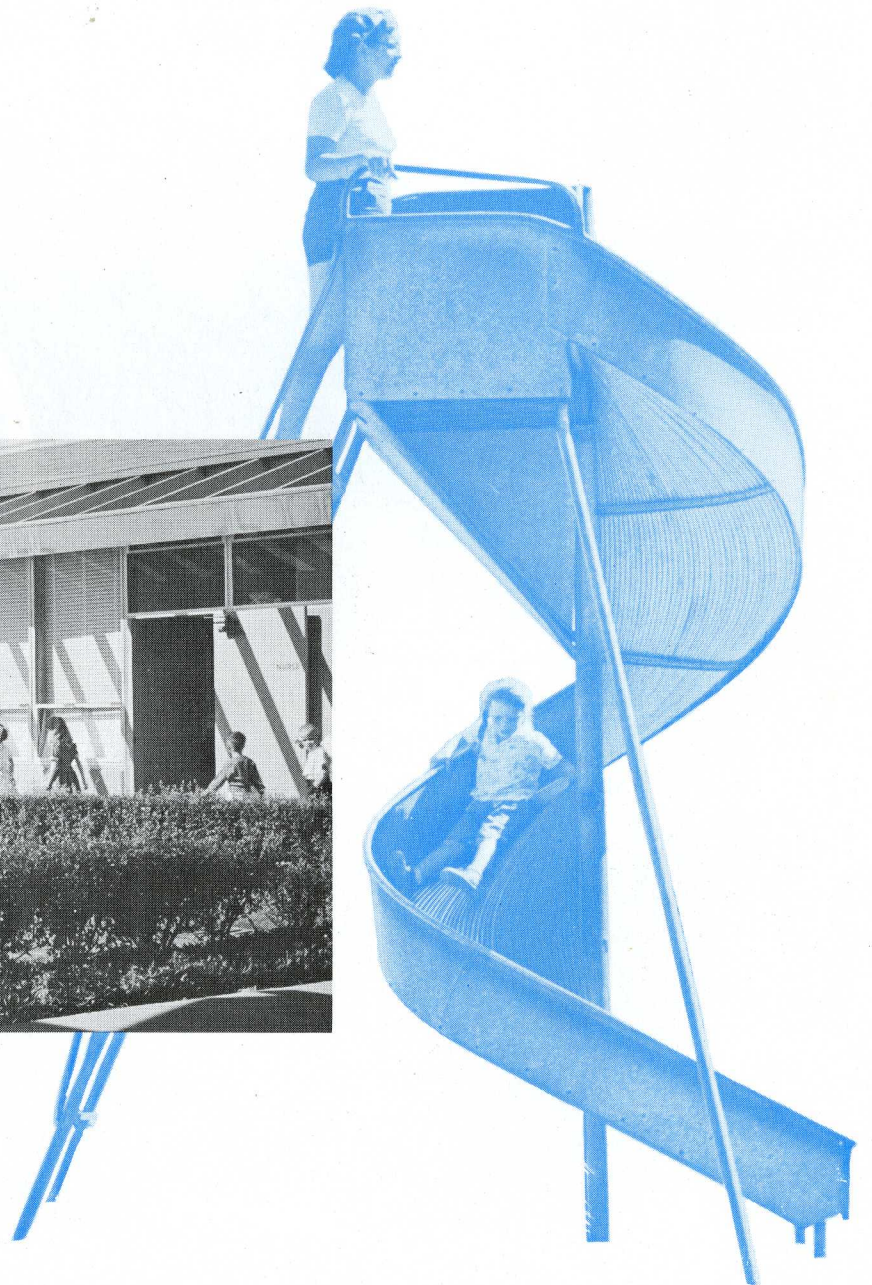
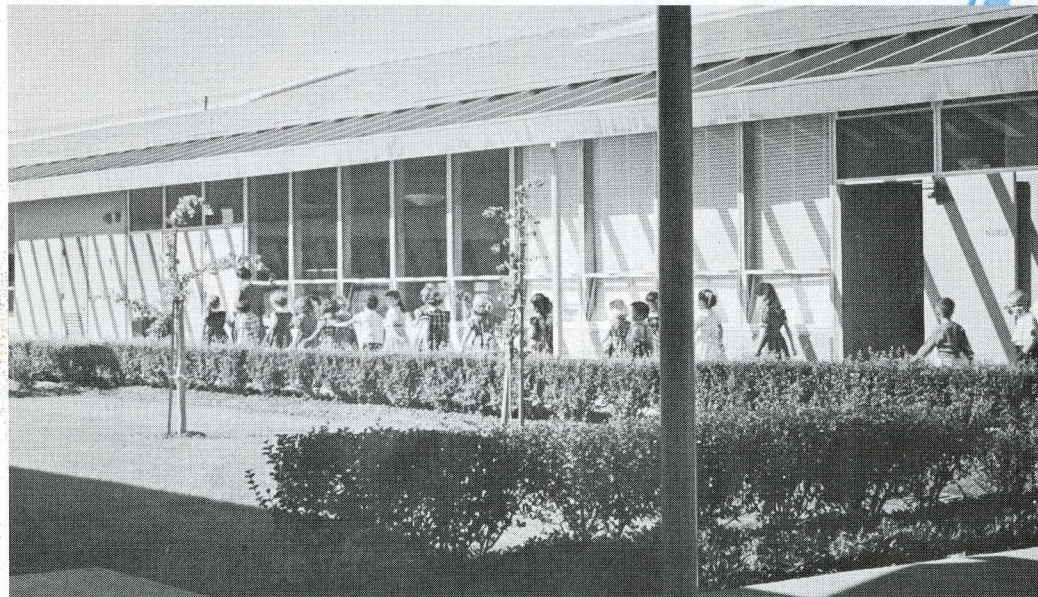
La Torre and inner-quadrangle at San Jose State College

The Campanile is a landmark of the University of California at Berkeley. Stevens Union, on the campus, is shown in insert.



Santa Clara Valley schools reflect progress of the area—modern, spacious, advanced in architectural concepts. High scholastic standards are a source of community pride. Shown here are two schools which typify the educational facilities provided students in all grades.

Ellis Elementary School in Sunnyvale (*below*). The oldest school in Sunnyvale was built in 1950.





Well-lighted library provides students with finest study conditions in Menlo-Atherton High School (*above*). The library contains more than 11,000 books and a record collection made up of classical music, foreign language, Elizabethan and Shakesperian records.

Menlo-Atherton High School students relax during lunch hour (*below*). Pleasant climate makes outdoor life possible throughout the school year.



cultural activities

For those whose way of life demands cultural satisfaction, Santa Clara Valley and San Francisco offer rich fulfillment. Symphonies, drama, ballet and many other cultural events are staged throughout the year. And in a major academic, engineering and scientific community such as the Valley, you can express yourself through participating groups covering virtually every field of cultural activity. Shown here are a few of the cultural outlets that draw the interest of Lockheed families.



Young thespians enact "The Ghost of Mr. Penny" by Rosemary Musil at the Children's Theatre in Palo Alto's Community Center (*above left*).

Leland Stanford Museum (*above right*) is another important cultural center in the Valley.

Plays are only one of the attractions presented throughout the year at San Jose Civic Auditorium (*right*). Egyptian Museum, also in San Jose, draws more than 100,000 visitors each year.

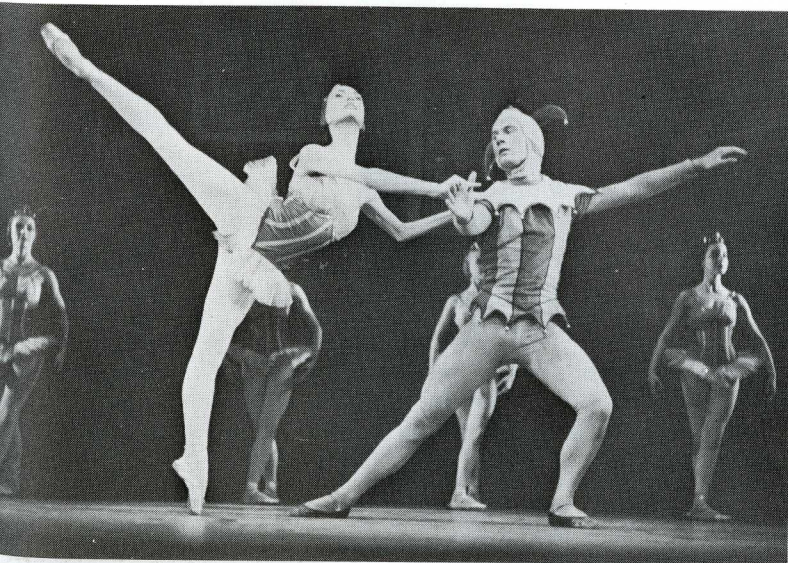


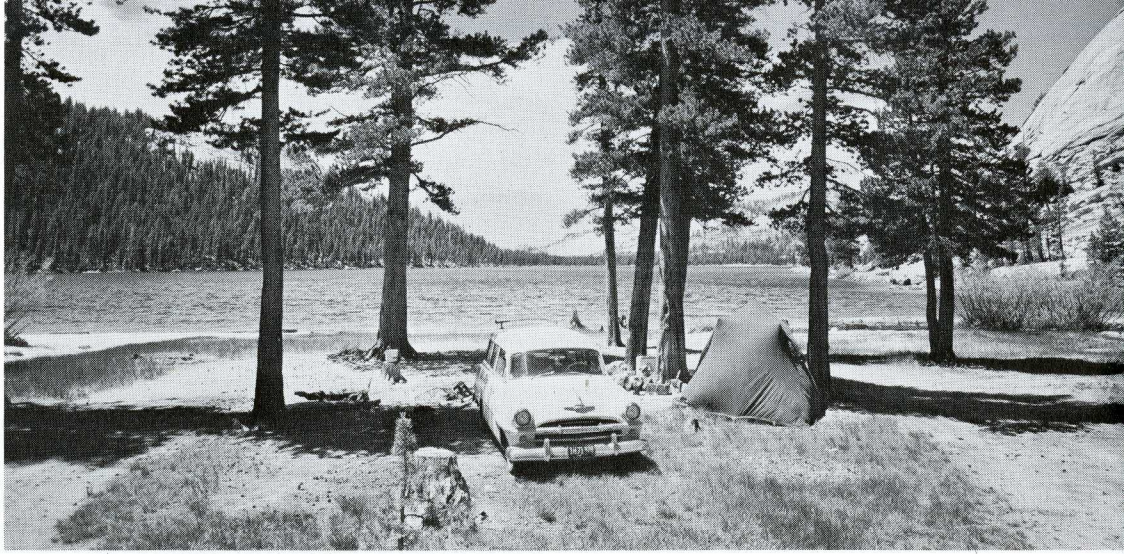


Distinguished artists of San Francisco Opera Company make opening night (*above*) one of the major cultural events on the West Coast.

Balletomanes enjoy artistry of a high order at performances of San Francisco Ballet Company (*below left*).

San Francisco Symphony (*below right*) is famous throughout the world. It performs at Stanford Memorial Auditorium each year. Operas, chorals, dramas and many other significant events are staged at the Memorial Auditorium.





Weekend campers have a limitless horizon. Santa Cruz Mountains and state parks offer camping among the redwoods. For variety, you can camp along eastern and western slopes of the Sierra Nevada Mountains for years, with a different site each time. Lake Tenaya (*above*) on Tioga Road above Yosemite is a typical example.

recreation

Outdoors and indoors, the recreational season for Lockheed families is 12 months long. And in such a diversified area, it is only natural to find Lockheed families active in so many sports and hobbies—golf, tennis, bowling, croquet, fishing, hunting, skiing, hiking, riding, and many others. Spectator sports are equally varied.

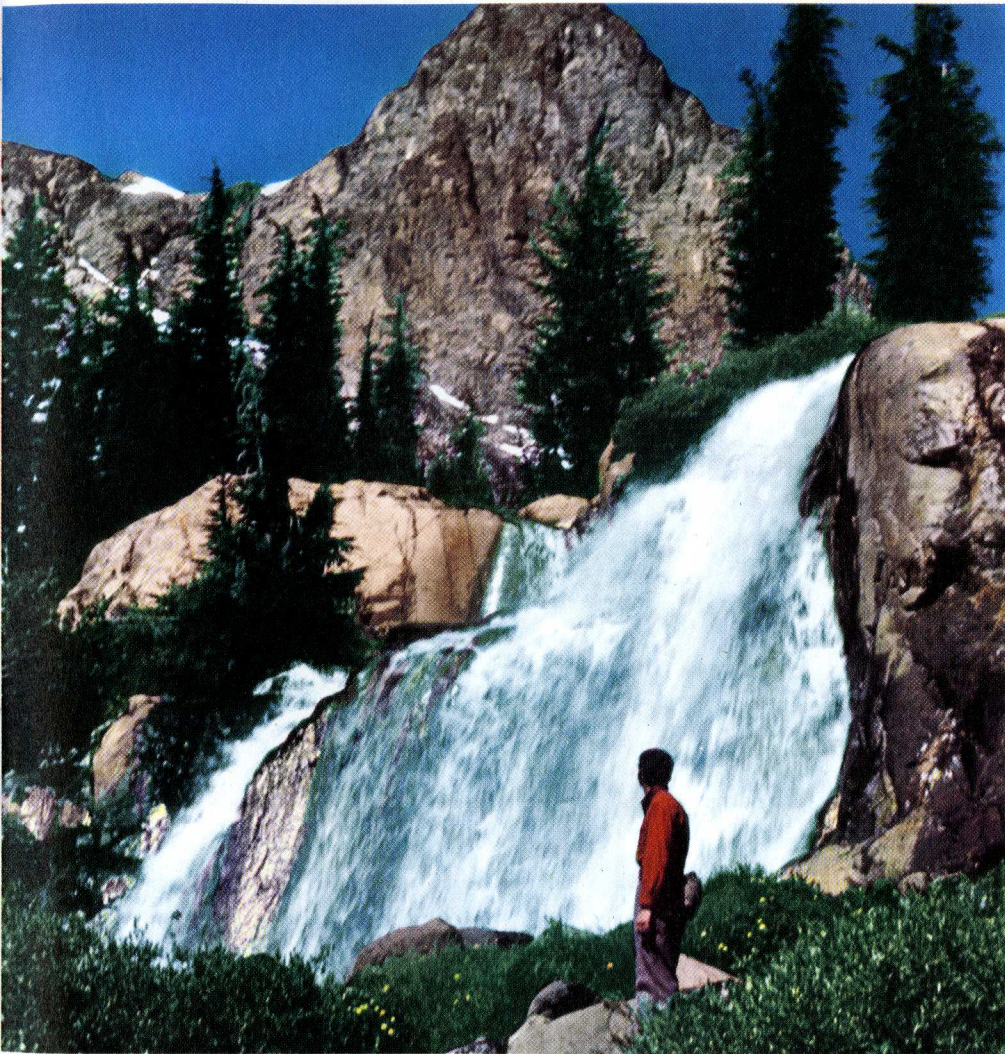
A dip in the Pacific is an hour's drive away at Santa Cruz (*below left*), one of the leading coast beach resorts.

San Francisco Bay calls many a sailor to the tiller (*below right*). An after-hours sail is simple when you can see the ocean from your office.



Schussers and ski-bunnies (*below right*) match their skill against Sierra slopes under top conditions. The season is long (Thanksgiving to May), and the snow is deep (up to 35 feet annually). Resorts in Yosemite and Lake Tahoe area are popular with skiers. Squaw Valley overlooking Lake Tahoe is site of 1960 Winter Olympics.

Valley anglers are but a short drive from battling trout (*bottom right*). In Santa Cruz Mountains, they can cast for rainbows and steelhead. Icy streams and lakes of Sierra Nevada Mountains teem with rainbows, brookies, brownies, goldens, mackinaws and kamloops. Warm water black bass and sunfish are the main catches in Santa Clara County lakes.

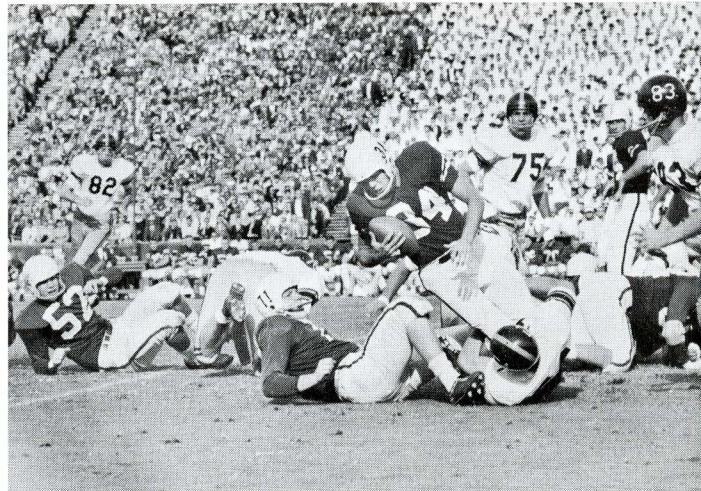


Sierra Nevada Mountains are unmatched for hiking, mountaineering, rock climbing. Mt. Ritter (*above*) is in one of the most beautiful regions of the Sierra – the spire-crested Minarets area.

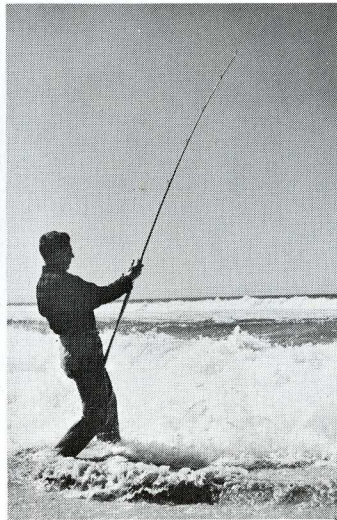
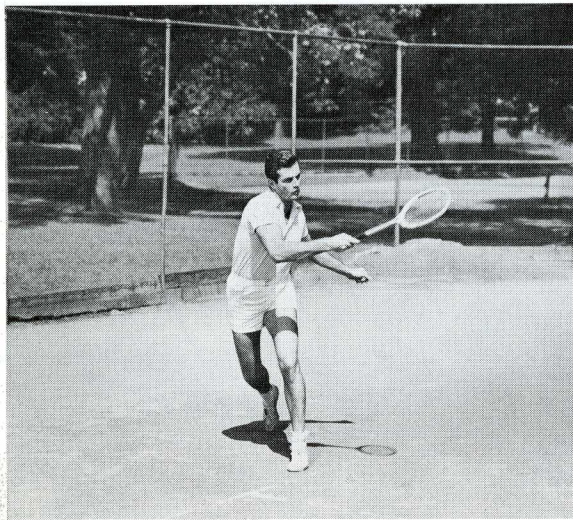
Bridal paths and cross-country riding delight the Valley horseman (*right*). Weekend riders view spectacular scenery in nearby Sierra Nevada Mountains.



Stanford Fullback Lou Valli bucks University of Southern California line in a crucial game (*right*). San Jose University, University of California at Berkeley and the professional San Francisco 49ers give football enthusiasts a rich and varied schedule.



With the Pacific only an hour away and San Francisco Bay but minutes distant, surf fishermen have ample opportunity to bait a hook for striped bass, surf perch, salmon and rock fish (*below*). Deep sea fishermen go mainly for fighting albacore, salmon, ling cod and various types of rock fish.



Tennis is a popular year 'round sport in Valley.

Thundering hoofs at Tanforan and Bay Meadows tracks thrill turf fans.

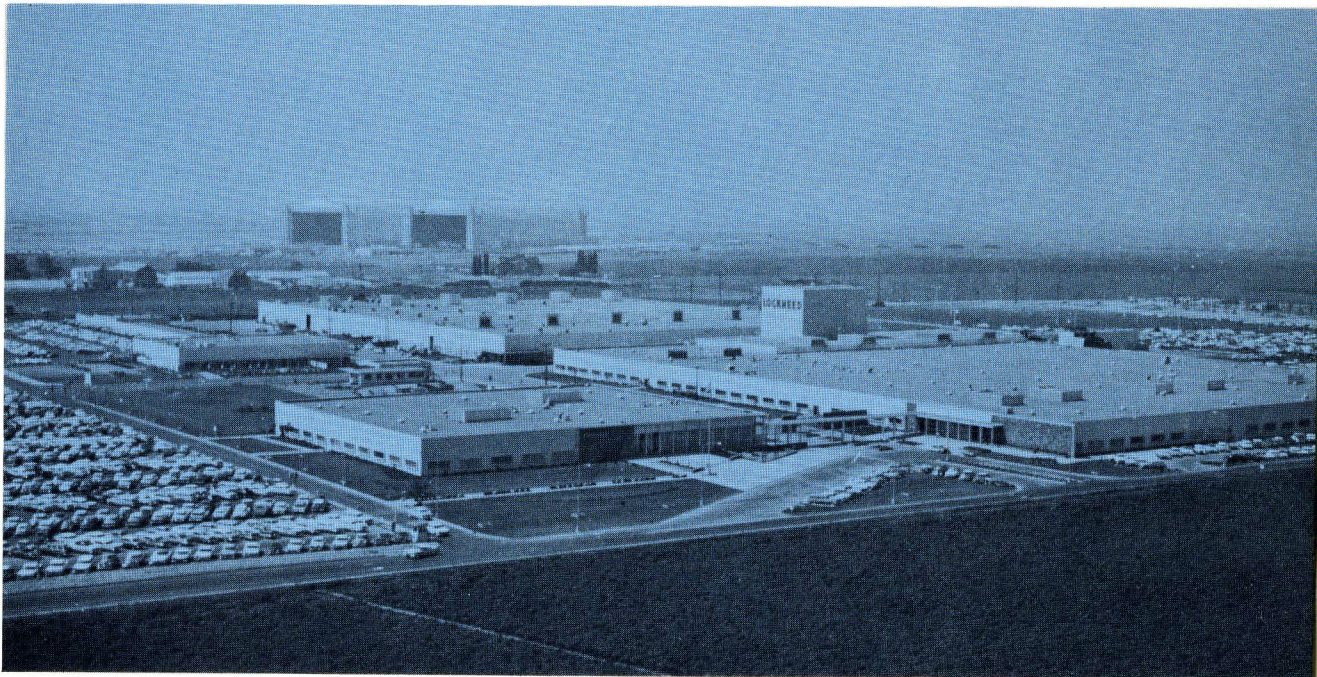


Lockheed /

MISSILE SYSTEMS DIVISION

SUNNYVALE, PALO ALTO, SANTA CRUZ, SANTA MARIA, CALIFORNIA

CAPE CANAVERAL, FLORIDA; ALAMOGORDO, NEW MEXICO



DIVISION HEADQUARTERS, SUNNYVALE, CALIFORNIA

LOCKHEED MISSILE SYSTEMS DIVISION