

501

 System/36

Updating to a
New Release
5360, 5362



UPDATE to RLS 5.1

IBM System/36

Updating to a New Release - 5360, 5362

Program Number 5727-SS1

File Number
S36-34

Order Number
SC21-9051-4

Fifth Edition (April 1987)

This major revision makes obsolete SC21-9051-3. Changes or additions to the text and illustrations are indicated by a vertical line to the left of the change or addition.

Changes are periodically made to the information herein; any such changes will be reported in subsequent revisions or Technical Newsletters. See "About This Manual" for a summary of major changes to this edition.

This edition applies to Release 5, Modification Level 1, of IBM System/36 System Support Program Product (Program 5727-SS1), and to all subsequent releases and modifications until otherwise indicated in new editions or Technical Newsletters.

The numbers at the bottom right of illustrations are publishing control numbers and are not part of the technical content of this manual.

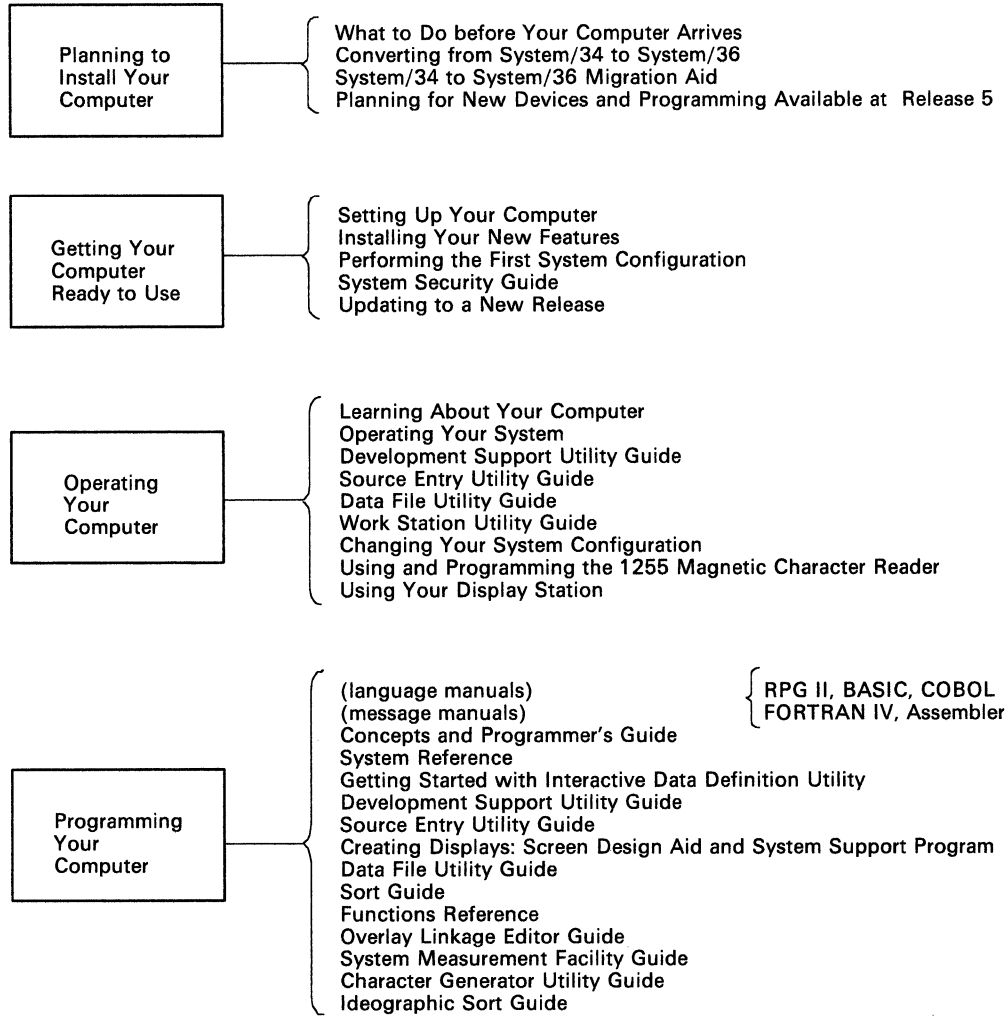
References in this publication to IBM products, programs, or services do not imply that IBM intends to make these available in all countries in which IBM operates. Any reference to an IBM licensed program in this publication is not intended to state or imply that only IBM's licensed program may be used. Any functionally equivalent program may be used instead.

Publications are not stocked at the address given below. Requests for IBM publications should be made to your IBM representative or to your IBM-approved remarketer.

This publication could contain technical inaccuracies or typographical errors. A form for readers' comments is provided at the back of this publication. If the form has been removed, comments may be addressed to IBM Corporation, Information Development, Department 245, Rochester, Minnesota, U.S.A. 55901. IBM may use or distribute whatever information you supply in any way it believes is appropriate without incurring any obligation to you.

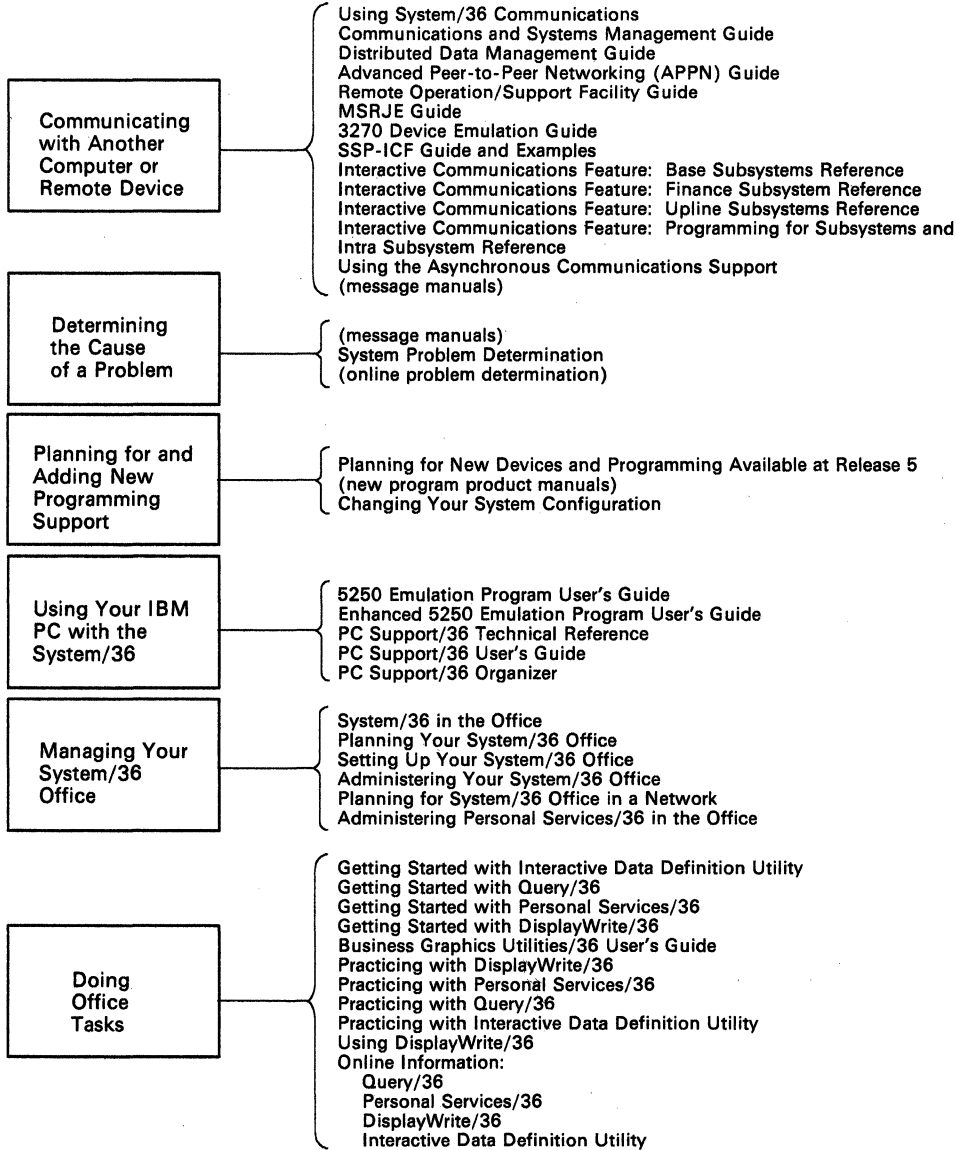
When You Are:

You Can Find Information In:



When You Are:

You Can Find Information In:



Contents

About This Manual	vii
Who should use this manual . . .	viii
A note about diskettes . . .	viii
What you should have . . .	ix
How this manual is arranged . . .	x
If you want more information . . .	xi
How this manual has changed . . .	xii
Chapter 1. Getting Ready to Install the Release Update	1-1
Chapter 2. Installing the Release Update	2-1
Chapter 3. If You Are Adding New System Support	3-1
If You Are Adding New Programming Support	3-1
If You Are Adding New Display Stations or Printers	3-3
If You Are Installing New Features for a 5362 System Unit	3-4
Backing Up Your System after Adding New Support	3-4
Appendix A. Backing Up Libraries and Diskettes	A-1
Backing Up Libraries	A-1
Backing Up SSP and Program Product Diskettes	A-7
Backing Up Microcode Diskettes	A-9
Appendix B. Source Entry Utility (SEU) Source Format Member	B-1
Appendix C. Nonstandard Versions of System/36 Programming Support	C-1
Ideographic Version	C-2
Kanji-Preferred Version	C-4
Southeast Asia Region (SEAR) Version	C-6

About This Manual

This manual provides information about preparing for and installing Release 5, Modification Level 1 on a system that has any previous release installed. It includes information about both the 5360 System Unit and the 5362 System Unit.

This manual describes how to update your *current* IBM-supplied programs only. It does not describe how to install a new program product, such as a programming language, or a new device, such as a printer. You should first use this manual to update the IBM-supplied programs currently on your system, and then use the *Changing Your System Configuration* manual to install any new program product or configure a new device.

To use this manual, you should be familiar with the planning done for Release 5, Modification Level 1. If you are planning to install new features, you or your system manager should already have used *Planning for New Devices and Programming Available at Release 5, Modification Level 1* to plan for these release enhancements.

If you are planning to install new features on a 5362 System Unit, first use this manual to update the IBM-supplied programs currently on your system, and then use the *Installing Your New Features* manual to install the new features.

If you plan to use the Software Distribution Support feature to update your remote systems, first use this manual to update your central site system, then use the manual *Guide to Installing Multiple Systems*, SC21-9867, to update your remote systems.

Use the System Support Program Product (SSP) diskettes, microcode diskettes, program temporary fix (PTF) diskettes, and documentation that are specified for the release you want to load. **All your diskettes and documentation must be at the same release level.**

When you begin your release update, carefully read each step, and do each in the *proper sequence*. Do not try to begin your release update in the middle of these steps.

Who should use this manual . . .

This manual is intended to be used by the system operator or the system manager. If you have password security on your system, you must have service aid authority. If you want more information about security procedures, see the manual, *System Security Guide*.

To install a new release on your system, you should know how to perform the following tasks:

- Perform initial program load (IPL)
- Operate display stations and printers
- Initialize and use diskettes
- Run the CNFIGSSP procedure

If you want information about one or more of these tasks, you can find the necessary information in the manuals listed in the manual, *System/36 Library: Guide to Publications*.

A note about diskettes . . .

Before you begin using the new release diskettes, here are just a few reminders about proper diskette handling:

- Do not place diskettes near magnetic materials, smoke, or any substances that can contaminate the diskettes.
- Do not touch or try to clean diskette surfaces.
- Do not use clips or rubber bands on a diskette.
- Do not place heavy books on a diskette.
- Do not expose diskettes to heat greater than 51.5° C (125° F) or to direct sunlight.
- Do not write outside the label area on diskettes. If you write on the label, use a soft fibertip pen.

What you should have . . .

Before you begin your release update, you should have backup copies of your current System/36 libraries, files, and folders, including your system library, program products libraries, and configuration library. Brief instructions for saving the system library and program product libraries are in Appendix A, "Backing Up Libraries and Diskettes," in this manual. The manual *Operating Your System - 5360, 5362*, SC21-9452, has more complete information about saving and maintaining files and libraries.

You will need the new release diskettes that contain the microcode, the SSP, and other programming support currently installed on your system.

If you have a diskette magazine drive, you will need two empty diskette magazines for the SSP diskettes. You will need additional empty diskette magazines for your other programming support.

If you have placed your own user members in #LIBRARY or in program product libraries, you will need initialized diskettes on which to save those user members.

You should have a printed copy of your current master configuration record. Use the CNFIGSSP procedure to print the master configuration record *before* you begin the update. *Changing Your System Configuration*, SC21-9052, has information about printing the master configuration record.

You should schedule at least 2 hours of dedicated system time to do the release update. Additional time is required, depending on how much programming support is currently installed on your system.

You must have the key to the security switch on your system unit.

How this manual is arranged . . .

Chapter 1, “Getting Ready to Install the Release Update,” describes what you can do to prepare your system and the diskettes containing the new release. Included in these steps are instructions to:

- Identify the new release diskettes.
- For systems with a magazine drive, insert the diskettes into the proper magazines.
- Check your master configuration record to make sure you have all the diskettes you need for the release update.

Chapter 2, “Installing the Release Update,” describes how to install the new release for support currently on your system. Included in these steps are instructions to:

- Ensure that no other jobs or operators are using the system during the release update.
- Copy to diskette any user members from the system library and program product libraries.
- Update the SSP and other programming support currently on your system.
- Apply the PTF diskettes, if you received such diskettes.
- Return to disk any user members you copied to diskette.

Chapter 3, “If You Are Adding New Support,” describes what you should do after you have updated your SSP and current programming support. Included is information about how to add new system support, and to install new features for a 5362 System Unit.

Appendix A, “Backing Up Libraries and Diskettes,” has brief instructions on saving libraries and copying diskettes.

Appendix B, “Source Entry Utility (SEU) Source Format Member,” has information about renaming or removing the SEU source format member.

Appendix C, “Nonstandard Versions of System/36 Programming Support,” has information about the nonstandard programming support.

If you want more information . . .

Use the following System/36 manuals if you want more information:

- *Guide to Publications*, GC21-9015, which describes the System/36 publications. It also contains a task index that shows which manuals are required for a task, and a master glossary that defines the system's technical terms.
- *Changing Your System Configuration*, SC21-9052, which describes how to change your system configuration. Configuration changes might include installing a new program product or device, changing the characteristics of a display station or printer, or changing the base SSP values.
- *Installing Your New Features*, SA21-9486 (5362), which contains the step-by-step instructions for installing new features on a 5362 System Unit.
- *Operating Your System – 5360, 5362*, SC21-9452, which describes how to operate the system.
- *Planning for New Devices and Programming Available at Release 5, Modification Level 1*, SA21-9907, which contains the planning forms and the instructions to plan for updating the system with new enhancements.
- *System Reference*, SC21-9020, which describes the procedures that you will use during this release update.
- *System Security Guide*, SC21-9042, which describes system security procedures.

How this manual has changed . . .

The following programming support was added for Release 5, Modification Level 0:

- Swedish DisplayWrite/36 (DW/36) Language Dictionary
- Norwegian DW/36 Language Dictionary
- Dutch DW/36 Language Dictionary
- Icelandic DW/36 Language Dictionary
- Advanced Peer-to-Peer Networking (APPN)
- External disk support (5362 only)
- To PC Support/36:
 - Shared folders
 - Online information for shared folders
 - PC Support/36 Organizer
- PC Support/36 Expansion feature
- To Personal Services/36:
 - Document Library Services (DLS)
 - Online information for DLS

The following programming support was added for Release 5, Modification Level 1:

- Portuguese DW/36 Language Dictionary
- Software Distribution support
- Local Area Network (LAN) Communications support
- To Personal Services/36:
 - Professional Office System (PROFS) bridge
- To PC Support/36:
 - IBM Token-Ring Network support
 - PC Support/36 Work Station Feature
 - PC Support/36 pass-through

*Note: The personal computer storage requirements increased for PC Support/36. Refer to the personal computer storage requirements tables in the **PC Support/36 User's Guide**, SC21-9088.*

Chapter 1. Getting Ready to Install the Release Update

Before you begin the release update,

- Make sure your security profile will allow you to do the release update. If password security is active on your system, you must have service aid authority. If you have secured any program product or feature library, file, or folder, you must have owner access for that library, file, or folder. Check with your master security officer to ensure that you have the required authorization in your profile, before you begin the release update. If you want more information about system security procedures, refer to the *System Security Guide*.
- Make sure you have a printed copy of your master configuration record. *Changing Your System Configuration* has instructions on how to print your master configuration record.
- Make sure you have backup copies of your current System/36 libraries, files, and folders, including the system library (#LIBRARY) and program product libraries. If you keep your configuration members in #CNFGLIB, you should also have a backup of that library.

Note: When you update to Release 5, Modification Level 1 from Release 4 or a previous release, you must convert all DisplayWrite/36 folders to the Release 5 format after the release update. The converted folders cannot be used with your previous release level; therefore, be sure to make a backup copy of each of your folders before you convert the folders.

If you are updating from Modification Level 0 of Release 5 to Modification Level 1, your folders are already converted.

- Schedule at least 2 hours of dedicated system time to do the release update. Additional time is required, depending on how much programming support is to be loaded on your system. **Dedicated** system time means that no other jobs or operators can use the system. The best time to do the release update is immediately after you have completed your normal backup of your libraries, files, and folders.
- If you currently have programming support on your system that you do not plan to update to the new release, delete that support before you begin the release update. The manual *Changing Your System Configuration* has instructions to delete programming support. In addition, an overview of the steps you must perform to delete support is included at the end of this chapter.

Step 1: Identify the new release diskettes.

Because the system will prompt you to load particular diskettes during the release update, it is important to identify each diskette by its label. Each diskette label specifies the name of the support contained on the diskette.

Note: The diskette labels shown in this manual are examples only and may not look exactly like the labels on your diskettes.

1a. Identify the diskettes containing the new release System Support Program Product (SSP).

The following is an example of the information on an SSP diskette label:

```
5727-SS1      R05   M01   FEAT nnnn
              S/36 SYSTEM SUPPORT PROGRAM
IDENT. M1.01                      VOL01 OF 11
```

Each diskette label identifies the release level and modification level of the diskette. The release level is Release 5 (R05) and the modification level is Modification Level 1 (M01).

The feature number (FEAT) on the label depends on your system unit and the language version of your programming support.

The IDENT field indicates magazine placement for diskette magazine drives. It specifies the diskette magazine slot (M1.01), and the slot within the magazine (M1.01) for the diskette.

The label also indicates the volume number of the diskette (VOL01 of 11) and how many diskettes there are for the support (VOL01 of 11). Some language versions have a different number of diskettes.

1b. Identify the program temporary fix (PTF) diskettes.

There might be one or more diskettes that contain the new release PTFs. The IDENT field on the diskette label identifies each PTF diskette:

```
SYSTEM SUPPORT PROGRAM/MCODE  
IDENT. S/36 PTFDKnnnn VOL01 OF nn
```

where:

nnnn Is the number of the PTF level.

nn Is the number of the PTF diskette volumes.

1c. Identify the microcode diskette.

Your microcode diskettes depend on your system unit.

For a 5360 System Unit, some models have two microcode diskettes labeled DSKT21 and DSKT24; other models have one microcode diskette labeled DSKT44. The IDENT field on the diskette label identifies each microcode diskette. The following is an example of the information on a microcode diskette label for a *5360 System Unit*:

```
5727-SS1   R05   M01   FEAT 9049
           S/36 SYSTEM SUPPORT PROGRAM
IDENT. MCODE DSKT21   VOL01 OF 02
```

For a 5362 System Unit, there are three microcode diskettes labeled DSKT01, DSKT02, and DSKT03. The IDENT field on the diskette label identifies each microcode diskette. The following is an example of the information on a microcode diskette label for a *5362 System Unit*:

```
5727-SS1   R05   M01   FEAT 9069
           S/36 SYSTEM SUPPORT PROGRAM
IDENT. MCODE DSKT01   VOL01 OF 03
```

The number of microcode diskettes you receive for the release update depends on the feature number that was ordered for the SSP. The following list shows the different feature numbers, and the number of microcode diskettes you will receive with each feature number:

- 9049** This feature number is for systems with a 5360 System Unit. There will be two microcode diskettes labeled DSKT21 and DSKT24.
- 9069** This feature number is for systems with a 5362 System Unit. There will be three microcode diskettes labeled DSKT01, DSKT02, and DSKT03.
- 9079** This feature number is for systems with both a 5360 System Unit and a 5362 System Unit. There will be DSKT21, DSKT24, and DSKT44 for the 5360 System Unit. There will be DSKT01, DSKT02, and DSKT03 for the 5362 System Unit.
- 9089** This feature number is for systems with a 5360 Model D System Unit. There will be one microcode diskette labeled DSKT44.

Note: If your programming support is not the standard English version, your feature numbers will be different. However, the number of microcode diskettes will be the same, depending on your system unit.

1d. Identify the diskettes containing the program products.

During the release update, the system uses only those diskettes containing the program products currently on your system. If you have any newly ordered program products, you will install them *after* you have completed the release update. However, you can identify these diskettes now.

The following table shows the diskette label names for the program products.

Diskette Label Name	Programming Support
✓ 5727-UT1	Utilities (DFU, WSU, SEU, SDA)
✓ 5727-RG1	RPG II
5727-CB1	COBOL
5727-BA1	BASIC
5727-FO1	FORTRAN
5727-AS1	Assembler
5727-WP1	DisplayWrite/36 (DW/36)
5727-WP2	DisplayWrite/36 Language Dictionaries: English French I French II (Canada) Spanish Italian Danish German Swedish Norwegian Dutch Icelandic Portuguese
5727-WP2	
5727-WP2	
5727-WP2	
5727-WP2	
5727-WP2	
5727-WP2	
5727-WP2	
5727-WP2	
5727-WP2	
5727-WP3	Personal Services/36
↖ 5727-QU1	Query/36
5727-EP1	3278 Device Emulation via IBM Personal Computer
↖ 5727-WS1	PC Support/36
5727-WS1	PC Support/36 Expansion Feature
5727-WS1	PC Support/36 Work Station Feature
5727-BG1	Business Graphics Utilities/36 (BGU/36)
5727-DS1	Development Support Utility (DSU)
5727-LC1	Local Area Network (LAN) Communications Support

Make a check mark beside the diskette label name of each diskette you have. You can use these check marks in step 3 when you determine if you have all the diskettes you need for the update.

1e. Identify the diskettes containing the SSP programming support.

During the release update, the system uses only those diskettes containing the SSP programming support that is currently on your system. If you have any newly ordered SSP programming support, you will install them *after* you have completed the release update. However, you can identify these diskettes now.

The following table shows the diskette label names for the SSP programming support.

Diskette Label Name	Programming Support
✓ 5727-SS1	Base Communications
✓ 5727-SS1	3270 Device Emulation
✓ 5727-SS1	MSRJE
5727-SS1	Data Encryption Subroutine
5727-SS1	Distributed Disk File Facility (DDFF)
5727-SS1	C & SM
5727-SS1	Distributed Data Management (DDM)
5727-SS1	Display Station Pass-Through (DSPT)
✓ 5727-SS1	Additional SSP
✓ 5727-SS1	Tape Support
5727-SS1	SSP-ICF Base Support
5727-SS1	SSP-ICF Upline Support
5727-SS1	SSP-ICF Finance Support
5727-SS1	Advanced Peer-to-Peer Networking (APPN)
5727-SS1	External Disk Support (5362 only)
5727-SS1	Software Distribution Support

Make a check mark beside the diskette label name of each diskette you have. You can use these check marks in step 4 when you determine if you have all the diskettes you need for the update.

Notes:

1. *Extended SSP/tape support is replaced by two separate features: Additional SSP and Tape Support. If you currently have Base Extended SSP support on your system, the Additional SSP feature is loaded during your release update. If you currently have tape support on your system, the Tape Support feature is loaded during your release update.*
2. *SSP-ICF is replaced by three separate features. If you currently have Base SSP-ICF support on your system, the SSP-ICF Base Support feature is loaded during the release update. If you currently have Finance support on your system, SSP-ICF Finance Support feature is loaded. If you currently have Upline support on your system, SSP-ICF Upline Support feature is loaded during your release update.*
3. *The Intra subsystem is now a part of the Communications feature.*
4. *The 3278 Device Emulation via IBM Personal Computer is now a program product.*

Step 2: Get the diskettes ready for the release update.

2a. If your system has a single-slot diskette drive, no preparation is necessary other than identifying the diskettes for the release update. Go to **Step 3** on page 1-15.

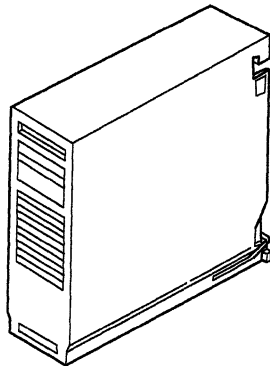
If your system has a diskette magazine drive, you will need from three to ten diskette magazines to use with the new release diskettes. You will need two magazines for the SSP diskettes. If you have any SSP programming features, you will need one or two magazines for the SSP features diskettes. If you have program products, you will need from one to six magazines for the program products. You cannot complete the release update without the diskette magazines.

Note: The magazine placement in this chapter is for the standard English, Uppercase English, Spanish, and Spanish MNCS (Multinational Character Set) versions of programming support. If you have Ideographic, Kanji-preferred, or SEAR (Southeast Asia Region) programming support, refer to Appendix C, "Nonstandard Versions of System/36 Programming Support," for the correct diskette magazine placement.

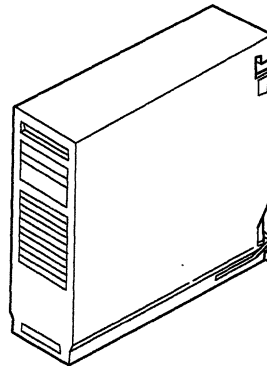
✓ **2b.** Insert the SSP diskettes into diskette magazines.

Take one of the diskette magazines and label it *SSP Magazine 1*. Take another of the diskette magazines and label it *SSP Magazine 2*.

SSP
Magazine 1



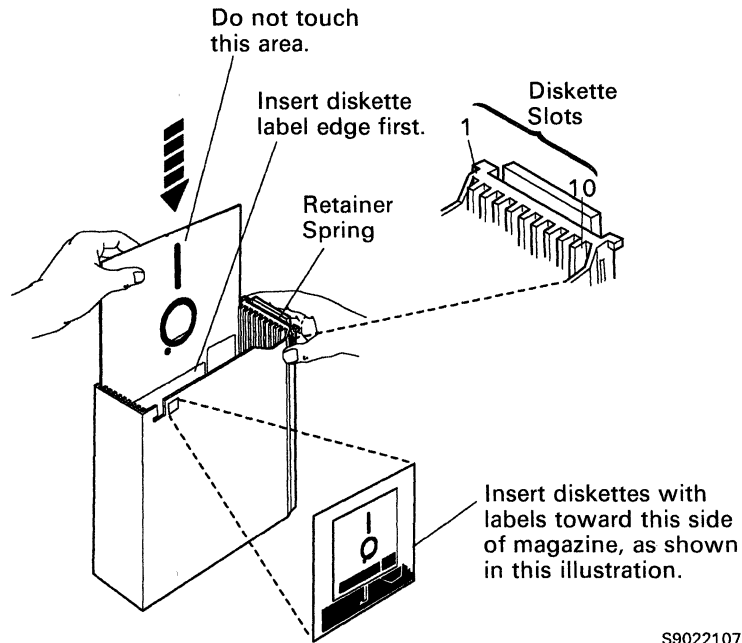
SSP
Magazine 2



S9051008-0

- 2c. Insert the SSP diskettes (labeled 5727-SS1) into the diskette magazines. Put the first SSP diskette (VOL01) in slot 1 of the magazine labeled *SSP Magazine 1*. Put the second SSP diskette (VOL02) in slot 2, and so on until the first ten SSP diskettes are in *SSP Magazine 1*.

If you have more SSP diskettes, put the eleventh SSP diskette (VOL11) in slot 1 of the magazine labeled *SSP Magazine 2*, and so on until the remaining SSP diskettes are in *SSP Magazine 2*.



S9022107-0

- 2d. If you have program products, insert the program products diskettes into diskette magazines.

During the release update, the system will use only the program products that are currently installed on your system. However, if you will be installing new program products following the release update, you can insert these program product diskettes into the magazine now. (You can use these same magazines for installing the new program products.)

Use the following tables to determine how many magazines you need for the program products. The tables show which diskette magazine and which diskette magazine slot *must* be used for each program product diskette. If you do not have a particular program product diskette, the magazine slot for that program product *must be left empty*.

If you have any of the diskettes shown in the following table, take a diskette magazine and label it *Programming Support Magazine 1*. Insert the diskettes into the magazine slots as indicated in the table.

Diskette Label Name	Programming Support	Diskette Magazine Slot
5727-UT1	Utilities	1 and 2
5727-RG1	RPG II	3
5727-CB1	COBOL	4
5727-BA1	BASIC	5
5727-FO1	FORTRAN	6
5727-AS1	Assembler	7

Use this table for Programming Support Magazine 1.

If you have any of the diskettes shown in the following table, take another diskette magazine and label it *Programming Support Magazine 2*. Insert the diskettes into the magazine slots as indicated in the table.

Diskette Label Name	Programming Support	Diskette Magazine Slot
5727-WP1	DisplayWrite/36	1 through 4
5727-WP2	DisplayWrite/36 English Language Dictionary	5 and 6
5727-BG1	BGU/36	7 and 8
5727-WP2	Portuguese Dictionary	9

Use this table for Programming Support Magazine 2.

If you have any of the diskettes shown in the following table, take another diskette magazine and label it *Programming Support Magazine 3*. Insert the diskettes into the magazine slots as indicated in the table.

Diskette Label Name	Programming Support	Diskette Magazine Slot
5727-WP3	Personal Services/36	1 through 8

Use this table for Programming Support Magazine 3.

If you have any of the diskettes shown in the following table, take another diskette magazine and label it *Programming Support Magazine 4*. Insert the diskettes into the magazine slots as indicated in the table.

Diskette Label Name	Programming Support	Diskette Magazine Slot
5727-DS1	Development Support Utility	1 through 3
X 5727-QU1	Query/36	4 through 6

Use this table for Programming Support Magazine 4.

If you have any DisplayWrite/36 Language Dictionary diskettes as shown in the following table, take another diskette magazine and label it *Programming Support Magazine 5*. Insert the diskettes into the magazine slots as indicated in the table. If you have only one Language Dictionary diskette, place it in the slot indicated and *leave the other slots empty*.

Diskette Label Name	DW/36 Language Dictionary	Diskette Magazine Slot
5727-WP2	Dutch Dictionary	1
5727-WP2	Icelandic	2
5727-WP2	French I	3
5727-WP2	French II (Canada)	4
5727-WP2	Spanish	5
5727-WP2	Italian	6
5727-WP2	Danish	7
5727-WP2	German	8
5727-WP2	Norwegian	9
5727-WP2	Swedish	10

Use this table for **Programming Support Magazine 5**.

If you have any of the diskettes shown in the following table, take another diskette magazine and label it *Programming Support Magazine 6*. Insert the diskettes into the magazine slots as indicated in the table.

Diskette Label Name	Programming Support	Diskette Magazine Slot
5727-WS1	PC Support/36	1 through 3
5727-WS1	PC Support/36 Expansion Feature	4
5727-WS1	PC Support/36 Work Station Feature	5

Use this table for **Programming Support Magazine 6**.

- 2e. If you have any of the SSP programming support diskettes shown in the following table, take another diskette magazine and label it *Programming Support Magazine 7*. Insert the diskettes for the SSP programming support as indicated in the following table.

During the release update, the system will use only the SSP programming support that is currently installed on your system. However, if you will be installing new SSP programming support following the release update, you can insert these diskettes into the magazine now. (You can use these same magazines for installing the new SSP programming support.)

The following table shows which diskette magazine slot *must* be used for each programming support diskette. If you do not have a particular SSP programming support diskette, the magazine slot for that diskette *must be left empty*.

Diskette Label Name	Programming Support	Diskette Magazine Slot
X 5727-SS1	Additional SSP	1
X 5727-SS1	Base Communications	2 and 3
X 5727-SS1	3270 Device Emulation	4
5727-EP1	3278 Emulation via IBM Personal Computer	5
X 5727-SS1	MSRJE	6
5727-SS1	Data Encryption Subroutine	7
5727-SS1	Distributed Disk File Facility (DDFF)	8
5727-SS1	C & SM	9

Use this table for Programming Support Magazine 7.

If you have any of the SSP programming support diskettes shown in the following table, take another diskette magazine and label it *Programming Support Magazine 8*. Insert the diskettes for the programming support as indicated in the following table.

Diskette Label Name	Programming Support	Diskette Magazine Slot
5727-SS1	Display Station Pass-Through (DSPT)	1
5727-SS1	Distributed Data Management (DDM)	2
X 5727-SS1	Tape Support	3
5727-SS1	SSP-ICF Base Support	4
5727-SS1	SSP-ICF Upline Support	5
5727-SS1	SSP-ICF Finance Support	6
5727-SS1	Advanced Peer-to-Peer Networking (APPN)	7
5727-LC1	LAN Communications	8
5727-SS1	Software Distribution Support	9 and 10

Use this table for Programming Support Magazine 8.

- 2f. Do not insert the PTF diskette or the microcode diskette(s) into a diskette magazine. You will be prompted in later steps to separately insert these diskettes into slot S1 of the diskette magazine drive.

Step 3: Make sure you have all the diskettes you need to reinstall the programming support currently on your system. Use the printout of your master configuration record to see what support is currently installed. (You will use the master configuration record as the basis of the update.) Any programming support that has an asterisk (*) in the printout will be reinstalled during the release update. (Compare the asterisks to the check marks you made in steps 1d and 1e.) **Do not begin the release update unless you have all the diskettes for the support marked with an asterisk.**

Note: If you do not want to reinstall support that has an asterisk, delete the support from your master configuration record **before** you begin the release update. To delete the support, you must run the CNFIGSSP procedure:

1. Change your configuration member by typing a minus (-) beside the prompt for the support you want to delete.
2. Select option 12 (**Apply change to the master configuration record**) on the CNFIGSSP Main menu to delete the support from the master configuration record.
3. During the IPL that follows the CNFIGSSP procedure, respond with Y (Yes) when you are prompted to drop the support. The manual **Changing Your System Configuration** has more information about deleting programming support.

Stop here for a moment.

Review what you have done. Have you:

- Made backup copies of your current libraries, files, and folders?
- Printed the current master configuration record?
- Identified the new release diskettes?
- Made sure you have all the diskettes for the support currently on your system; this support is marked with an asterisk (*) in the printout of your master configuration record.
- Put the diskettes into the proper diskette magazine slots if you have a system with a diskette magazine drive?
- Scheduled at least 2 hours of dedicated system time to do the release update? Additional time may be required, depending on how much programming support is currently loaded on your system.

Continue with **Step 4**.

Chapter 2. Installing the Release Update

Step 4: Sign on at the system console. The release update must be done at the system console.

If password security is active on your system, you must have service aid authority.

If you have secured any program product library, you must have owner access for that library.

If you have created your own default menu, that menu must not be stored in the system library (#LIBRARY).

Step 5: Make sure your system is dedicated for your use only.

5a. Type the following on the command line:

```
MSG ALL,STARTING RELEASE UPDATE: PLEASE SIGN OFF
```

Press the Enter key.

This sends a message to all display stations on the system.

5b. Type the following on the command line:

```
STOP WORKSTN,ALL
```

Press the Enter key.

This ensures that any users signed on the system cannot start jobs or put jobs on the job queue. It allows:

- Jobs currently running to complete
- Jobs on the job queue to run
- Entries in the spool file to print
- SSP-ICF sessions to continue

5c. Make sure the job queue is empty. Use the STATUS JOBQ (or D J) command to see whether any jobs are waiting on the job queue.

5d. Make sure the spool file is empty. Use the STATUS PRT (or D P) command to see whether any output is printing or waiting to be printed.

5e. Make sure all remote work stations are offline. Use the STATUS WORKSTN (or D W) command to see whether the remote display stations and printers are offline.

5f. Make sure there are no user jobs active. Use the STATUS USERS (or D U) command to see whether any user jobs are active.

5g. If you have SSP-ICF support, make sure any SSP-ICF subsystems are disabled, and that there are no active SSP-ICF sessions. Use the STATUS SUBSYS (or D I) command to see whether any subsystems are enabled; use the STATUS SUBSESS (or D N) command to see whether any sessions are active.

The manual *Operating Your System* has more information on controlling the job queue and spool file entries. It also has information on using the VARY OFF command to place remote work stations offline, and information on disabling SSP-ICF subsystems and sessions.

Step 6: Increase your system library (#LIBRARY).

Type the following:

```
COMPRESS A1,FREELow
```

Press the Enter key. Type the following:

```
ALoCLIBR #LIBRARY,500,,,INCR
```

Press the Enter key. Now type the following:

```
COMPRESS A1,FREEHIGH
```

Press the Enter key.

Step 7: If you have DisplayWrite/36 (DW/36) currently installed on your system, follow these directions:

Note: After the release update, you must convert all DW/36 folders to Release 5 format. The converted folders cannot be used on your previous release level; therefore, be sure to make a backup copy of all your DW/36 folders before you convert the folders.

If you currently have online information for DW/36 installed on your system, delete the library #TULIB; a new #TULIB will be created during the update. You can delete the library by entering the following:

```
DELETE #TULIB,F1,,,LIBR
```

The *System Reference* manual has more information about the DELETE procedure.

Step 8: If you have Source Entry Utility (SEU) currently installed on your system, follow these directions:

If you have SEU format source members on your system, a source member named #SE@XTRA might be in your system library. You can check to see if this member is in your system library by entering the following:

```
SYSLIST CRT
```

Now enter the following:

```
LISTLIBR #SE@XTRA,LIBRARY,#LIBRARY,,,,DIRINFO
```

If the member #SE@XTRA is in your system library, go to Appendix B, "Source Entry Utility (SEU) Source Format Member" to determine if you should remove or rename this member.

If the member is not in your system library, continue with **Step 9**.

Step 9: If you have placed any of your own library members in #LIBRARY or program product libraries, copy these user members to diskette. If you do not copy the members to diskette, they will be destroyed when you load the new SSP.

9a. To copy to diskette all user members you have placed in #LIBRARY, use the FROMLIBR procedure.

Notes:

1. *If you have changed any IBM-supplied members, these members will be copied as user members.*
2. *#LIBRARY must be the current session library when you perform the FROMLIBR procedure in this step.*
3. *Do not use any procedure other than the **FROMLIBR** procedure to copy your user members to diskette.*

If you are unsure whether user members are contained in #LIBRARY, you should run the FROMLIBR procedure anyway. If no user members are in the library, the FROMLIBR procedure will issue the following system message:

Given members in this library are IBM

The following example shows how you can enter the FROMLIBR procedure to copy all user members in #LIBRARY to diskette.

```
FROMLIBR ALL,LIBRARY,USERMEM,,IBMIRD,#LIBRARY
```

- | | |
|----------|---|
| ALL | In the first parameter and LIBRARY in the second parameter indicate that all user members are to be copied. |
| USERMEM | Is the diskette file to be created for this example. You may use a different name. |
| IBMIRD | Is the diskette volume ID used in this example. <i>Your diskette volume ID may be different.</i> You can use the CATALOG procedure to determine the volume ID of your diskette. |
| #LIBRARY | Indicates that the user members are to be copied from the system library. |

- 9b. If you have placed user members in any of your program product libraries, you should also copy these members to diskette. For example, you might have assembler subroutines in your RPG II library. The following example shows how you can enter the FROMLIBR procedure to copy all user members in a program product library to a file on diskette.

```
FROMLIBR ALL,LIBRARY,RPGMEM,,,IBMIRD,#RPGLIB
```

RPGMEM Is the diskette file to be created for this example. You may use a different name.

#RPGLIB Is the name of the RPG II program product library.

See Appendix A, "Backing Up Libraries and Diskettes," for a list of program product library names.

The *System Reference* manual has more information about the CATALOG, LISTLIBR, and FROMLIBR procedures.

Step 10: Update the SSP and microcode.

10a. If you have a single-slot diskette drive, insert the first SSP diskette (labeled 5727-SS1, VOL01) into the diskette drive.

If you have a diskette magazine drive:

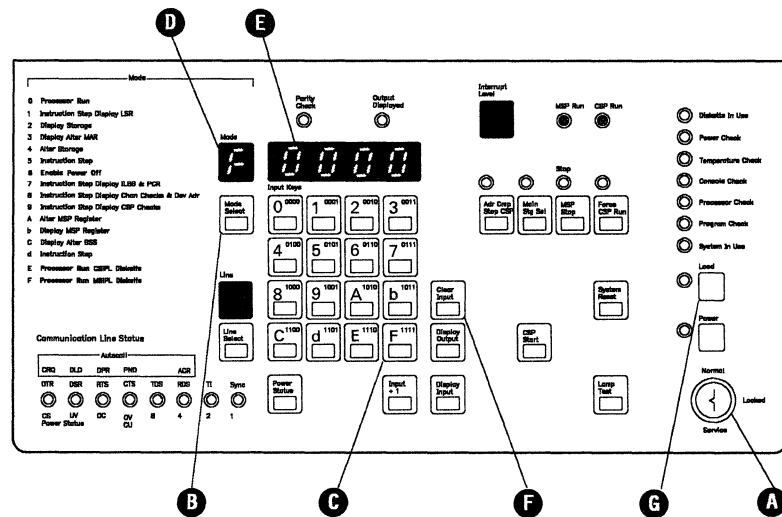
- Insert the diskette magazine labeled *SSP Magazine 1* into magazine slot 1 (M1).
- Insert the diskette magazine labeled *SSP Magazine 2* into magazine slot 2 (M2).

10b. Turn the security switch **A** on the system control panel to the Service position.

10c. To perform an IPL from diskette, follow the instructions for your system unit.

For a 5360 System Unit:

1. Press the Mode Select key **B**.
2. Press the F key **C**. The Mode display **D** should show an F.
3. Make sure the Input/Output display **E** shows all zeros. If it does not show all zeros, press the Clear Input key **F**.
4. Press the Load key **G**.

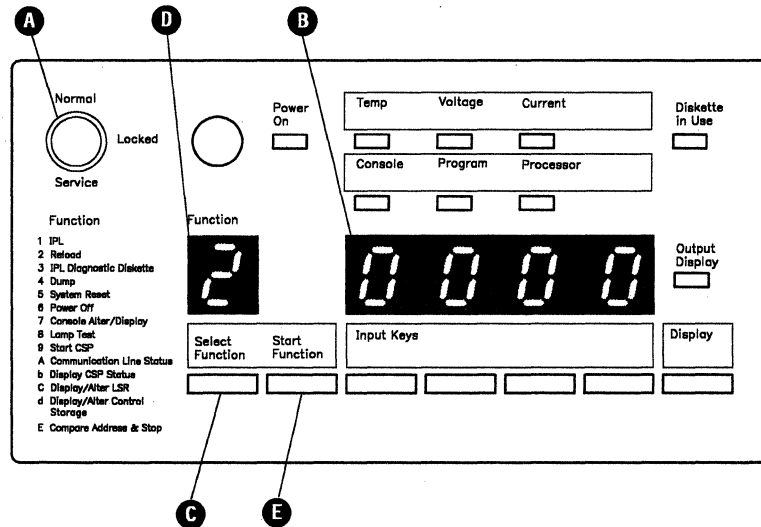


Control Panel for 5360 System Unit

S9051009-1

For a 5362 System Unit:

1. Make sure the output display **B** shows all zeros. If it does not contain all zeros, turn the security switch **A** to the Normal position, then back again to the Service position. Now the output display should show all zeros.
2. Press the Select Function key **C** until the Function display **D** shows a 2.
3. Press the Start Function key **E**. A countdown screen is displayed on the system console.



Control Panel for 5362 System Unit

S9051010-1

If an error during the IPL from diskette causes you to terminate the IPL from diskette, you can do the following to attempt to recover:

- Correct the error condition, then return to **Step 10a** and perform an IPL from diskette again using the Release 5 diskettes.
- If you cannot correct the error condition immediately (for example, you might need a replacement diskette), you can reload the previous release, beginning with the IPL from diskette.

To reload the previous release:

- Use the diskettes you used to load the previous release.

You need the SSP diskettes, microcode diskettes, PTF diskettes, program product diskettes, and feature diskettes for the release you want to load.

All of your diskettes must be at the same release level.

- Use the documentation you used to load the previous release.

When you loaded the previous release, you used either the setup manual or a previous edition of the *Updating to a New Release* manual. Use that manual to reload the previous release.

Your documentation must be at the same release level as your diskettes.

- 10d.** When the SSP Generation and Reload - Sign On display appears at the system console, type in your user ID and, if the password prompt appears, type your password. Press the Enter key.

If SYS-3922 SSP level error or SYS-3923 SSP level error is displayed, make sure you are using your new microcode diskettes, and then press the Enter key to continue.

- 10e. **For a single-slot diskette drive**, insert the remaining SSP diskettes as indicated by the prompts on the system console display. As the system loads the programming support, it displays messages indicating what is being loaded. The order in which the diskettes are loaded is not sequential. The system might not use all of the diskettes.

After the system reads the SSP diskettes, it will prompt for the microcode. Insert the microcode diskette indicated by the prompt, and press the Enter key. If you are prompted for another microcode diskette, insert that diskette and press the Enter key. You might not be prompted for all of the microcode diskettes.

For a diskette magazine drive, the system will load the SSP from the diskettes. As the system loads the programming support, it displays messages indicating what is being loaded. The order in which the system loads the diskettes is not sequential. The system might not use all of the diskettes.

After the system reads the SSP diskettes, it will prompt you to insert the microcode. Insert the microcode diskette indicated by the prompt into diskette slot 1 and press the Enter key. If you are prompted for another microcode diskette, insert that diskette into diskette slot 1 and press the Enter key.

- 10f. After the SSP and microcode have been loaded, one or more of the following messages will appear:

SSP reload complete, remove diskettes.
Microcode load complete, remove diskette.
SSP generation complete, MSIPL from disk required.

For a single-slot diskette drive, remove the remaining diskette from the diskette drive. You will use the diskette drive again for step 10.

For a diskette magazine drive, leave the magazines in the drive.

Place the microcode diskettes with the rest of your microcode diskettes; you will not need them for the following steps.

*Note: Retain **both** your new microcode diskettes **and** your previous microcode diskettes. These diskettes may be needed if you require service on your system.*

Step 11: To perform an IPL from disk, do the following.

11a. Turn the security switch on the system control panel to the Normal position.

11b. To perform the IPL, follow the instructions for your system unit.

For a 5360 System Unit:

1. Press the Mode Select key.
2. Press the 0 key. The Mode display should show a 0.
3. Press the Load key.

For a 5362 System Unit:

1. Press the Select Function key. The Function display should show a 1.
2. Press the Start Function key. A countdown screen is displayed on the system console.

11c. If the system is unable to increase a system area to the size specified in the master configuration record, system message SYS-3917 is displayed. Press the Enter key to continue. The system area will be increased as much as possible.

11d. If you are loading SEAR programming support, you are prompted for your language version. After you select the appropriate language version, you are prompted to verify your selection. Respond to these prompts and continue.

11e. The IPL Sign On display will be shown. Respond to the prompts on the sign-on display. For the

Overrides?

prompt, specify N (no) except in the following cases:

- If you have specified *Automatic Vary On* for your remote work stations, specify Y (Yes) for the overrides prompt. Select the option to change communications status (option 3), then specify N (No) for the option to vary on remote work stations.
- If you have a startup procedure (#STRTUP1 or #STRTUP2) that automatically starts a job or enables a subsystem, and if this procedure is not stored in #LIBRARY, specify Y (Yes) for the overrides prompt. On the IPL Overrides menu, select the option to display programs to be run during IPL (option 2). On the next display, specify N (No) for the startup procedure. When the IPL Overrides menu is redisplayed, select option 1 to continue the IPL.

11f. After the IPL, the Main System/36 help menu or a default menu is shown.

Step 12: Update any SSP programming features and program products currently on your system. Also, you will be prompted to apply PTFs at the end of this step; apply the PTF diskette(s) if you have received any.

12a. Enter the following:

CNFIGSSP

12b. On the CNFIGSSP Main menu (display 1.0), select option 13 (*Rebuild the master configuration record [Update to next release]*).

12c. On the Configuration Member Definition display (3.0), select option 5 (*Master configuration*).

The system runs the CONDENSE procedure, then loads the programming support.

If you get an error message at any point in step 12 and you can select only option 2 or 3, press the Print key to record the error. Then select option 3 to terminate the CNFIGSSP procedure. You can use one of the following methods to attempt to recover:

- Correct the error condition, then begin the CNFIGSSP procedure again. Create a new configuration member based on the configuration in the master configuration record. Save the configuration member, then select option 12 on the CNFIGSSP Main menu and specify the new configuration member. Only the support that did not load during the release update will be loaded.
- If you cannot correct the error condition immediately (for example, you might need a replacement diskette) and you want to try to use the new release programming that has successfully loaded, return to **Step 11** and perform an IPL from disk.

When you correct the error condition that required termination of the update, begin the CNFIGSSP procedure again. Create a new configuration member based on the configuration in the master configuration record. Save the configuration member, then select option 12 on the CNFIGSSP Main menu and specify the new configuration member. Only the support that did not load during the release update will be loaded.

- If you cannot correct the error condition immediately because you need a replacement diskette and most of the support has successfully loaded, return to **Step 11** and perform an IPL from disk. Then begin the CNFIGSSP procedure again and create a new configuration member based on the configuration in the master configuration record. Place a minus (-) beside the prompt for the support that cannot be loaded. (If you place a minus beside support that is required for another product, you must also place a minus beside the other product.) Save the new configuration member, then select option 12 from the CNFIGSSP Main Menu and specify the new configuration member. Only the support that did not load during the release update will be loaded. During IPL, specify N (No) for the prompt that asks if you want to drop support.

When you have the replacement diskette, run the CNFIGSSP procedure and place a plus (+) for the support in the configuration member. Save the configuration member, then use option 12 with the changed configuration member. Only the support with the plus (+) will be loaded.

- Reload the previous release, beginning with the IPL from diskette.

To reload the previous release:

- Use the diskettes you used to load the previous release.

You need the SSP diskettes, microcode diskettes, PTF diskettes, program product diskettes, and feature diskettes for the release you want to load.

All of your diskettes must be at the same release level.

- Use the documentation you used to load the previous release.

When you loaded the previous release, you used either the setup manual or a previous edition of the *Updating to a New Release* manual. Use that manual to reload the previous release.

Your documentation must be at the same release level as your diskettes.

If you want more information about the CNFIGSSP procedure, refer to the manual, *Changing Your System Configuration*.

12d. Insert the diskettes or diskette magazines as indicated by the prompts:

If you have a single-slot diskette drive, each prompt will usually identify the diskette by diskette label name and volume number. For example, 5727-SS1,3 is the prompt for volume 03 of the SSP. If the prompt asks for the next diskette, insert the next sequential diskette. Insert each diskette indicated by the current prompts, then enter 0 (zero). Go to **Step 12e**.

If you have a diskette magazine drive, the magazines labeled *SSP Magazine 1* and *SSP Magazine 2* should be in diskette magazine slots 1 and 2. Press the Enter key to respond to the prompts to insert the magazines.

If you have program products or features currently installed on your system, you will be prompted to insert the magazines in the appropriate magazine slot. If you are prompted for M1, place the magazine in magazine slot 1. If you are prompted for M2, place the magazine in magazine slot 2.

The system will load the information needed from the diskettes and display a message indicating the support is being loaded.

- 12e.** If you have SEU on your system, you might be prompted to specify whether you want the SEU display format source members installed. The SEU source members allow you to change the display formats supplied with SEU. Respond with a Y (Yes) or N (No).

If you have BASIC on your system, you might be prompted to specify whether you want the BASIC help facility installed. Respond with Y (Yes) or N (No).

If you have 3270 Device Emulation on your system, you might be prompted to enter the language number for the input/output interface code to be used with the remote host, and to enter the language number for the translation tables to be used with this system. You can find this information on the System Configuration Planning Form (one of the J forms in your planning packet).

- 12f.** When the SSP programming features and program products reload is complete, respond to the prompt:

Do you want a printout of this configuration?

If you respond with a Y (Yes), save the printout for future reference. You might want to have such a printout if you will be adding software or hardware. Wait until the printing has stopped before you continue.

Remove the diskette or diskette magazine remaining in the diskette drive.

12g. Respond to the prompt:

- Did you receive a special PTF diskette with your set of SSP diskettes?

If you did not receive PTF diskettes with your new release diskettes, type in an N (No) and press the Enter key. Continue with **Step 12h**.

If you received one or more PTF diskettes with your release diskettes, press the Enter key and do the following:

Note: Use only the PTFs that you received with your new release diskettes. Do not use PTFs from a previous release.

For a single-slot diskette drive:

1. Insert the first PTF diskette (labeled VOL 01) into the diskette drive.
2. Type 0 and press the Enter key.
3. If you have more than one PTF diskette, remove the first PTF diskette and continue inserting the PTF diskettes into the diskette drive as prompted.

For a diskette magazine drive:

1. Insert the first PTF diskette (labeled VOL 01) into slot S1.
2. If you have a second PTF diskette (labeled VOL 02), insert it into slot S2.
3. If you have a third PTF diskette (labeled VOL 03), insert it into slot S3.
4. Type 0 and press the Enter key.
5. If you have more than three PTF diskettes, remove the first three PTF diskettes and continue inserting the PTF diskettes into slots S1, S2, and S3 as prompted.

If you received PTF diskettes, but this prompt is not displayed, complete the release update and then install the PTF diskettes. *Operating Your System* has instructions on installing PTF diskettes.

Note: If you plan to install new program products after you complete your release update, install these PTF diskettes again after the new program products have been installed.

If the message SYS-3349 The PTF library named above will be deleted. is displayed, select option 0 and continue.

12h. When the following message appears:

System configuration complete.
Press the Enter key in order to IPL from disk.

remove the PTF diskette from the diskette drive.

Press the Enter key. The system will perform an IPL from disk.

If the following message appears:

SYS-3914 System area will be cleared.

select option 0 to continue.

12i. Respond to the prompts on the IPL Sign On display. For the
Overrides?

prompt, make sure a N (No) is specified.

Step 13: If you applied PTFs in step 12, you should condense your system library. You must have a dedicated system to condense your system library. Step 5 has instructions to make sure your system is dedicated. To condense your system library, enter the following command:

```
CONDENSE #LIBRARY
```

Step 14: If you copied your user members to diskette in step 9, return these members to a library on disk. If you did not copy user members to diskette, go to **Step 15**.

Note: You and your system manager or programmer should consider placing the user members you copied from the system library (#LIBRARY) to a user library instead of #LIBRARY. Similarly, if you had user members in program product libraries (such as #RPGLIB), you might want to place them in user libraries as well.

Use the TOLIBR procedure to return to disk the user members you copied to diskette in step 9. To use the TOLIBR procedure, insert into the diskette drive the diskette you used to copy the members. Type the following:

```
TOLIBR
```

and press the Help key. The TOLIBR help screen is displayed.

1. For the *Name of file containing library members* prompt, type the name of the diskette file you used when you copied the members to diskette. In our example, we used the name USERMEM for the user members in #LIBRARY. The name you used may be different.
2. For the *Name of library to contain members* prompt, type the name of the library you want to place the members in.

Do not change the other parameters. Press the Enter key.

The *System Reference* manual has more information about the TOLIBR procedure.

Step 15: Because the system library (#LIBRARY), the microcode, and the program product libraries have been replaced, consider the following:

- If you updated from Release 4 or a previous release, and if you have DW/36 folders on your system, you must convert the folders to the Release 5 format. You can convert all the folders at one time by using the DOCCNV procedure. The *System Reference* manual has information about the DOCCNV procedure. If you do not use the DOCCNV procedure to convert the folders, each folder will be converted the first time it is used. (It takes approximately 3 minutes to convert a folder containing 500 documents.) Because the converted folders cannot be used with your previous release programming, make sure your release has been successfully loaded before you convert your folders. Make sure you have a backup copy of each folder before it is converted. (If you updated from Release 5, Modification Level 0, your folders are already converted.)
- If you have a 5360 System Unit that has a single line communications adapter (SLCA), the SLCA must be at the Release 5 level in order to use asynchronous communications. If you want to use asynchronous communications and your SLCA is at a previous release level, contact your service representative to make the necessary hardware changes.
- If you had other IBM programs installed on your system before the release update, you may have to load these programs again. Use the same procedure you used when you loaded the programs the first time. (Other programs are programs that were not included in the program products table in step 2d.)
- If you have used the RESPONSE procedure to change automatic response values for messages, these changes will no longer be in effect after the release update. Run the RESPONSE procedure again for each automatic response member. The *System Reference* manual has information about the RESPONSE procedure.
- If any IBM-supplied modules in #LIBRARY or in any program product library were modified before the release update, these modifications were removed during the release update. If the modifications are still required, they *must be* made again.
- If you have disabled any SSP-ICF subsystems or sessions, or have placed any remote work stations offline, the manual *Operating Your System* has information to enable the subsystems or sessions with the ENABLE command, and information to place the remote work stations online with the VARY ON command.

Step 16: Download any personal computer programs.

- 16a.** If you had PC Support/36 installed on your system before the release update, you need to reinstall the PC Support/36 program to the personal computer. The manual *PC Support/36 Technical Reference*, SC21-9097, has information about installing this support using an install diskette.
- 16b.** If you had 3278 Emulation via IBM Personal Computer installed on your system before the release update, refer to the *3278 Emulation via IBM Personal Computer—User's Guide*, SC09-1086, for information to copy the 3278 emulation program to the personal computer.

Step 17: The support you currently have installed on your system has been updated.

Because you increased the size of the system library (#LIBRARY) before the release update, you might have unused space in #LIBRARY. (If you plan to add programming support to your system, do not decrease the size of #LIBRARY until after you have added the support.) To determine if you have unused space in #LIBRARY:

1. Use the CATALOG procedure to find the current size of #LIBRARY.
2. Use the configuration support aids to calculate the recommended #LIBRARY size. Chapter 8 in the manual *Changing Your System Configuration* has instructions to use the configuration support aids.
3. Compare the current #LIBRARY size to the recommended size. If the current size is much larger than the recommended size, decrease the size of #LIBRARY.

To decrease the size of the system library:

1. Use the SLIB procedure to change your session library; you cannot change the size of #LIBRARY if it is the current session library.
2. Use the ALOCLIBR procedure to change the size of #LIBRARY. Add 100 blocks to the recommended #LIBRARY size, and use this value to set the new size of #LIBRARY.

Back up #LIBRARY, other libraries, files, and folders. See Appendix A, "Backing Up Libraries and Diskettes" on page A-1 for information about saving files and libraries. Also, retain your backup copies from the previous release until you are sure your system is functioning correctly with the new release.

Store your diskettes in a safe place. You should keep the diskettes that contain your current release of SSP, microcode, PTFs, and other programming support. Store them with this manual in case you need to reload your system.

If you plan to add new support to your system, continue with Chapter 3, "If You Are Adding New System Support."

Chapter 3. If You Are Adding New System Support

If you are adding new system support, you will use the CNFIGSSP procedure to change your configuration member and master configuration record. The manual *Changing Your System Configuration* has instructions for the CNFIGSSP procedure. In addition, there might be other tasks to perform while adding your new support. Use the following lists as an outline of the tasks necessary for adding the new support.

To help you install the new support, use the planning forms you completed from the manual *Planning for New Devices and Programming Available at Release 5*.

If You Are Adding New Programming Support

1. If you are adding new programming support, you might need to increase the size of your system library (#LIBRARY) before you add the support. To check the current size of #LIBRARY, enter the following:

```
CATALOG #LIBRARY
```

This procedure tells you the number of blocks currently in #LIBRARY. It also tells you the total number of blocks on your disk (device capacity) and how much space is available on disk.

2. Make sure you have enough disk space available to add the new programming support and increase #LIBRARY. Appendix B in the manual *Changing Your System Configuration* has the space required on disk and in #LIBRARY for each program product and feature.

3. Increase the size of #LIBRARY by the number of blocks required for the new support:
 - a. Enter the following:
COMPRESS A1,FREELOW
 - b. Enter the following:
ALOCLIBR #LIBRARY,nnnnn,,,INCR

where nnnnn is the number of blocks to increase #LIBRARY.
 - c. Enter the following:
COMPRESS A1,FREEHIGH
4. Use the CNFIGSSP procedure to add the new programming support to your configuration member. Chapter 3 in *Changing Your System Configuration* has instructions.
5. Copy the changes from your configuration member to the master configuration record. Use option 12 (*Apply change to the master configuration record*) on the CNFIGSSP Main Menu (display 1.0). You will be prompted to insert the diskettes for any new programming support. Chapter 7 in *Changing Your System Configuration* has additional instructions.
6. Apply the PTF diskette or diskettes again (if you received PTF diskettes with your new release diskettes) after you install any new program products. The manual *Operating Your System* has instructions on installing the PTF diskettes.

If You Are Adding New Display Stations or Printers

If you are adding new display stations or printers, they must be added to the master configuration record after they are installed. The manual *Changing Your System Configuration* has instructions to perform the following tasks.

1. Local display stations and printers are automatically added to the master configuration record during IPL. However, you will need to copy the master configuration record to a new configuration member. “Using Automatic Configuration” in Chapter 2 of the manual *Changing Your System Configuration* has instructions.
2. Remote display stations, printers, and remote controllers must be added to the master configuration record by using the CNFIGSSP procedure. “Adding or Deleting Remote Work Stations” in Chapter 2 of the manual *Changing Your System Configuration* has instructions to make additions to the configuration member.
3. You might want to use the CNFIGSSP procedure to make one of the following changes for your new work stations:
 - Change the characteristics of a new printer. You can change characteristics such as lines per inch, number of separator pages, and whether you want the printer to automatically vary on at IPL.
 - Change the characteristics of a new display station. You can change characteristics such as display type, heading lines and borders for print key output, and whether you want the display station to automatically vary on at IPL.
 - Assign default printers to your new display stations.
 - Assign subconsoles to your new printers.
 - Assign a new printer as the system printer.
 - Change work station IDs.
4. If you change your configuration member, copy the new information to the master configuration record. Use option 12 (*Apply change to the master configuration record*) on the CNFIGSSP Main menu (display 1.0).

If You Are Installing New Features for a 5362 System Unit

If you are adding the main storage feature, work station feature, communications feature, or the 6157 Tape Drive feature to a 5362 System Unit, see the manual *Installing Your New Features (5362)* for instructions.

Backing Up Your System after Adding New Support

After adding any system support, back up #LIBRARY and other libraries, disk files, and folders. Appendix A, "Backing Up Libraries and Diskettes," has information about saving files and libraries. Also, retain your backup copies from the previous release until you are sure your system is functioning correctly with the new release.

Appendix A. Backing Up Libraries and Diskettes

This appendix has instructions to back up libraries that are loaded on your system. It also has instructions to copy SSP diskettes, microcode diskettes, and program product diskettes.

If you have the Software Distribution Support feature, you can use this feature to back up your programming support more easily than the procedures documented in this appendix. Refer to the BUILD operation in the manual *Guide to Installing Multiple Systems*, SA21-9867.

Backing Up Libraries

Anytime you add programming support or make other changes to your system configuration, you should make new backup copies of your system library, configuration library, and the libraries and folders for the programming support. This appendix has brief instructions on how to save to diskette the system library (#LIBRARY), the configuration library (#CNFGLIB), and other program support libraries and folders. For more detailed instructions on saving libraries and for instructions on how to save PTF libraries, see the manual *Operating Your System*. For instructions to back up programming support to tape, see the manual *Changing Your System Configuration*.

Step 1: Determine how many diskettes you need to save the libraries or folders. Use type 2D diskettes.

For program product libraries, files, and folders, the number of diskettes required is included in the following tables.

For #LIBRARY and #CNFGLIB, use the configuration support aids to determine how many diskettes you need to save each library.

a. To use the configuration support aids, enter the following:

```
CNFIGSSP
```

b. On the CNFIGSSP Main menu (display 1.0), select option 10 (*Configuration support aids*).

c. On the Support Aids menu (display 34.0), select option 4 (*Number of diskettes needed to save a library*).

- d. Type the name of the library to be saved. For the system library, use the name #LIBRARY. If you store your configuration members in #CNFGLIB, use that name for the configuration library. Press the Enter key.

The display shows how many diskettes are required to save the library.

- e. Press the Enter key to return to the Support Aids menu (display 34.0).
- f. Press command key 3 to return to the CNFIGSSP Main menu (display 1.0).
- g. Select option 14 (*End CNFIGSSP*).

Step 2: Use the INIT procedure to initialize the backup diskettes.

Insert a backup diskette or diskettes and type INIT. Press the Help key. The INIT help screen is displayed.

- a. For the *volume ID* parameter:
 - Type SYSTEM for the system library (#LIBRARY) or the configuration library (#CNFGLIB).
 - Type the volume ID indicated in the tables in this appendix for the other libraries, files, or folders.
- b. For the *Initializing function*, type FORMAT2.
- c. If you are using a diskette magazine, specify the *Starting diskette location* and *Ending diskette location*. All the diskettes will have the same volume identifier.
- d. Press the Enter key.

If there are active files on the diskette, the system will issue a message. If you no longer need the files on the diskette, enter 0 (zero) to continue. If you do need the files on the diskette, type 3 and press the Enter key to end the procedure. Use a different diskette and begin the INIT procedure again.

Step 3: Save the library or folder.

Insert the diskette or diskettes required to save the library or folder. If more than one diskette is required, be sure you **label each diskette volume in the sequence it is saved.**

a. To save the system library or configuration library, type SAVELIBR and press the Help key. The SAVELIBR help screen is displayed:

1. For the *Name of the library to be saved* prompt, type #LIBRARY for the system library, or #CNFGLIB for the configuration library.
2. For the *Volume ID* prompt, type SYSTEM.
3. For the *Location of diskette* prompt, type S1 if you are using one diskette slot, or the magazine location if you are using a magazine drive.
4. Press the Enter key.

If more diskettes are needed, you are prompted to insert the remaining diskettes.

b. To save other libraries or folders, type the procedure name indicated on the following table, and press the Enter key.

The table on the following page has the name of each programming support, the volume identifier, the name of each program product library, the number of 2D diskettes needed, and the procedure to use to save the library.

Programming Support	Volume ID	Library or File Name	2D Diskettes	Save Procedure
RPG II	PPRPG	#RPGLIB	1	RPGSAVE
Assembler	PPASM	#ASMLIB	1	ASMSAVE
COBOL	PPCOBL	#COBLIB	1	COBSAVE
FORTRAN	PPFORT	#FORTLIB	1	FORTSAVE
BASIC	PPBASC	#BLLIB	1	BASSAVE
DFU	PPUTIL	#DFULIB	1	DFUSAVE
WSU	PPUTIL	#WSULIB	1	WSUSAVE
SEU	PPUTIL	#SEULIB	1	SEUSAVE
SDA	PPUTIL	#SDALIB	1	SDASAVE
PC Support/36	PPIWS	#IWLIB	2	IWSAVE
PC Support/36 Organizer	PPIWS	#IWLIB	1	PCOSAVE
PC Support/36 Shared Folders	PPIWS	#IWLIB	1	SHRFSAVE
PC Support/36 IBM Token-Ring Network Support	PPIWS	#IWLIB	1	LRTRSAVE
PC Support/36 Pass-Through	PPIWS	#IWLIB	1	IWPTSAVE
PC Support/36 Work Station Feature	PPWSF	#IWLIB2	1	WSFSAVE
BGU/36	PPBGU	#BGULIB	2	BGUSAVE
DSU	PPDSU	#DSULIB	2	DSUSAVE
Online Problem Determination ¹	PPOLPD	#ONLPD	2 ¹	OLPDSAVE
CGU	PPSSP	#CGULIB	1	CGUSAVE
IGC Sort	PPSSP	#SRTXLIB	1	SRTXSAVE
DisplayWrite/36	PPTXT	#TULIB #PRFFLDR	2	TEXTSAVE SAVEFLDR
Personal Services/36	PPOFC	#OFCLIB	4	OFCSAVE
Personal Services/36 PROFS Bridge	PPOFC	#OFCLIB	1	PROFSAVE
Document Library Services	PPOFC	#OFCLIB	1	DLSSAVE
Query/36	PPQRY	#QRYLIB	1	QRYSAVE
Software Distribution Support	PPSWD	#SWLIB	2	SWDSAVE
LAN Communications Support	PPLAN	#LANLIB	1	LANSAVE
Support for Printing Online Information	PPSSP	#TULIB	1	DOCPSAVE
3278 Device Emulation via IBM Personal Computer	PPETEM	#EPPCLD1	1	SAVE
¹ For some systems, only one diskette is required.				

The following table has the volume identifier and the name of each DisplayWrite/36 Language Dictionary, the number of 2D diskettes required, the procedure to save the dictionary, and the name of the library where the dictionary is saved. When you save a dictionary with the DICTSAVE procedure, you are prompted for the name of the dictionary.

Dictionary	Volume ID	Number of Diskettes (2D)	Procedure Name	Library Name
DW/36 Language Dictionaries				
English	PPENG	2	DICTSAVE	#TUENG
French I	PPFRN	1	DICTSAVE	#TUFNRN
French II	PPFRC	1	DICTSAVE	#TUFNRN
Spanish	PPSPN	1	DICTSAVE	#TUSPN
Italian	PPITN	1	DICTSAVE	#TUITN
Danish	PPDAN	1	DICTSAVE	#TUDAN
German	PPGER	1	DICTSAVE	#TUGER
Swedish	PPSWE	1	DICTSAVE	#TUSWE
Norwegian	PPNOR	1	DICTSAVE	#TUNOR
Dutch	PPDUT	1	DICTSAVE	#TUDUT
Icelandic	PPICE	1	DICTSAVE	#TUICE
Portuguese	PPPOR	1	DICTSAVE	#TUPOR

The following table has the name, the volume identifier, the number of 2D diskettes required to save each online information product, the procedure to save the online information product, and the name of the folders and files included with each product.

Online Information Product	Volume ID	Number of Diskettes (2D)	Procedure Name	Folder or File Name
DW/36 Online Information	PPTXT	2	SAVEFLDR SAVEFLDR	#WPFLDR WPDOCS
Personal Services/36 Online Information	PPOFC	3	SAVEFLDR SAVEFLDR SAVELIBR SAVE	#OFCFLDR #DIRSMP #DQRYSP \$OUDRSMP
Document Library Services Online Information	PPOFC	1	SAVEFLDR	#DLSFLDR
Query/36 Online Information	PPQRY	2	SAVEFLDR	#QRYFLDR
IDDU Online Information	PPMRI	1	SAVEFLDR SAVEFLDR SAVEFLDR SAVE SAVE SAVE	#IDDFLDR #IDDUSMP #USERDCT CUSTCDT NAMEADDR NAMEPHON
DSU Online Information	PPDSU	1	SAVEFLDR	#DSUFLDR
Shared Folders Online Information ¹	PPIWS	1	SAVEFLDR	#WPFLDR
¹ If DW/36 online information is on your system, shared folders online information in #WPFLDR is saved when DW/36 online information is saved.				

When you save a folder with the SAVEFLDR procedure, you are prompted for the name of the folder and the volume ID. Use the name and volume ID indicated in the table. You are also prompted for the compress parameter; change the default to COMPRESS. The diskette requirements in the table are based on using the COMPRESS parameter.

When you save a file with the SAVE procedure, you are prompted for the name of the file and the volume ID. Use the name and volume ID indicated in the table.

Notes:

1. *In the manual **Changing Your System Configuration**, Appendix C has instructions to restore these libraries, files, and folders.*
2. *These procedures are only for backing up your programming support. Do not use these procedures to send support to another system, unless you also load the same #LIBRARY on the other system.*

Backing Up SSP and Program Product Diskettes

If you want to back up SSP or program product diskettes, you must initialize the backup diskettes, then copy the diskettes.

Step 1: Initialize the backup diskettes.

For each diskette you want to copy, insert a 2D diskette and type `INIT`. Press the Help key. The `INIT` help screen is displayed.

- a. For the *volume ID* prompt, use the volume identifiers indicated in the tables in this appendix for the program product diskettes. For the SSP diskettes, use the following volume identifiers:
 - For volumes 1 through 8, use `PPMRI`.
 - For volumes 9 through 13, use `PPSSP`.
 - For volume 14, use `PPOLPD`.
- b. For the *Initializing function*, type `FORMAT2`.
- c. If you are using a diskette magazine, specify the *Starting diskette location* and *Ending diskette location*. All the diskettes in the magazine will have the same volume identifier.
- d. Press the Enter key.
- e. If there are active files on the diskette, the system will issue a message. If you no longer need the files on the diskette, type 0 (zero) to continue. If you do need the files on the diskette, type 3 and press the Enter key to end the procedure. Use a different diskette and begin the `INIT` procedure again.

Step 2: Copy the diskette.

Insert the diskette to be copied. Type COPY11 and press the Enter key. The COPY11 Help screen is displayed.

- a. For *Volume ID*, use the same volume identifier you used to initialize the backup diskette.
- b. For *Starting location of diskette that contains file to be copied*, type the location of the diskette or starting location of the diskettes to be copied. If you are using a diskette magazine, the diskettes to be copied must have the same volume identifier.
- c. For *Starting location of diskette to contain copied file*, type the location of the backup diskette or starting location of the backup diskettes. If you are using a diskette magazine, the backup diskettes must have the same volume identifier.
- d. Press the Enter key.

Backing Up Microcode Diskettes

You should always have a backup copy of your System/36 diskettes. To back up microcode diskettes, you must initialize the backup diskettes, then copy the microcode diskettes.

Step 1: Initialize the backup diskettes.

A 2D diskette must be initialized for each microcode diskette you want to back up.

Insert the diskette to be initialized into diskette slot 1 and type INITDIAG. Press the Enter key.

If there are active files on the diskette, the system will issue a message. If you no longer need the files on the diskette, type 0 (zero) to continue. If you do need the files on the diskette, type 3 and press the Enter key to stop the procedure. Use a different diskette and begin the INITDIAG procedure again.

Step 2: Copy the diskette.

a. Insert the microcode diskette you want to copy into diskette slot 1.

If you have more than one diskette slot, insert the diskette to receive the copy into diskette slot 2.

b. Type COPYDIAG and press the Enter key. The system will read the microcode from the diskette.

c. The system will prompt you to insert the diskette to receive the copy. If you have a single-slot diskette drive, remove the microcode diskette and insert the initialized diskette into the diskette slot.

d. Type 0 (zero) and press the Enter key. After the system copies the diskette, a message is displayed indicating the copy has been made, and prompting for a diskette for another copy. If you want another copy of the same diskette, replace the new copy with another initialized diskette. If you do not want another copy of the same diskette, type 3 and press the Enter key to stop the COPYDIAG procedure.

Step 3: Repeat **Step 2** to copy each microcode diskette.

Label each backup microcode diskette as soon as the copy is made. Include the information in the IDENT field of the original diskette, and specify the release level of the diskette.

Appendix B. Source Entry Utility (SEU) Source Format Member

If you have SEU source format members on your system, you might have a member named #SE@XTRA in your system library. This member contains formats for use with SEU. Although this member is created by SEU, it is treated by the system as a user member, allowing you to change or add to the formats.

When the new programming support is loaded, the system loads a new #SE@XTRA member. If you save #SE@XTRA with your other user members, when you restore your user members to the system library, a system message SYS-2510 will be displayed telling you there is a duplicate member in the system library.

- **If you have *not* changed or added to the formats in #SE@XTRA,** you should remove the member from your system library before you continue the release update. To remove the member, type the following:

```
REMOVE #SE@XTRA,LIBRARY,#LIBRARY
```

Press the Enter key and return to the step you were doing in “Installing the Release Update.”

- **If you have changed or added to the formats in #SE@XTRA, and you want to continue to use the changed or added formats, you can either rename the member or replace the new member with your member when you restore the user members to the system library.**

- If you want to rename the member, type the following:

```
CHNGEMEM #SE@XTRA,LIBRARY,#LIBRARY,new name
```

Press the Enter key. If you rename the member, you will have the formats you changed or added in addition to the new member named #SE@XTRA which will be loaded by SEU. However, when you begin an SEU session and want to use the changed or added members, you must specify the new member name for the prompt that asks for the name of the member containing SEU formats. (This prompt defaults to #SE@XTRA.) Return to the step you were doing in “Installing the Release Update.”

- If you want to replace the new #SE@XTRA member with the member that contains your changed or added formats, continue with the release update. When you restore the user members to the system library in step 14, the system message SYS-2510 will be shown. Respond with a zero (0) option. The system will replace the new member with your member.

Appendix C. Nonstandard Versions of System/36 Programming Support

The following nonstandard versions of programming support are loaded in the diskette magazines differently from the standard English version.

- Ideographic
- Kanji-preferred
- Southeast Asia Region (SEAR)

This appendix has tables that show how to load these nonstandard versions into the diskette magazines.

The other nonstandard versions of programming support are loaded into the diskette magazines in the same order as the standard English version.

Ideographic Version

The following shows the slots in the magazine that must be used for each diskette.

SSP Magazine 1: Insert the first SSP diskette in diskette slot 1 of SSP magazine 1. Insert the second SSP diskette in diskette slot 2, and so on, until the first 10 SSP diskettes are in SSP magazine 1.

SSP Magazine 2: If there are more SSP diskettes, insert the eleventh SSP diskette in diskette slot 1 of SSP magazine 2, insert the twelfth SSP diskette in diskette slot 2, and so on, until the remaining SSP diskettes are in SSP magazine 2.

Programming Support Magazine 1: The following table shows which slots *must* be used for each diskette. If you do not have the diskette for a designated slot, leave that slot empty.

Diskette Label Name	Ideographic Programming Support	Diskette Magazine Slot
5727-UT1	Utilities (DFU, WSU, SEU, and SDA)	1 through 3
5727-RG1	RPG II	4
5727-CB1	COBOL	5
5727-BA1	BASIC	6
5727-FO1	FORTRAN	7
5727-AS1	Assembler	8

Programming Support Magazine 2: The following table shows which slots *must* be used for each diskette. If you do not have the diskette for a designated slot, leave that slot empty.

Diskette Label Name	Ideographic Programming Support	Diskette Magazine Slot
5727-BG1	Business Graphics Utilities/36	7 and 8

Programming Support Magazine 4: The following table shows which slots *must* be used for each diskette. If you do not have the diskette for a designated slot, leave that slot empty.

Diskette Label Name	Ideographic Programming Support	Diskette Magazine Slot
5727-DS1	Development Support Utility	1 through 4
5727-QU1	Query/36	5 through 8

Programming Support Magazine 7: The following table shows which slots *must* be used for each diskette. If you do not have the diskette for a designated slot, leave that slot empty.

Diskette Label Name	Ideographic SSP Programming Support	Diskette Magazine Slot
5727-SS1	Additional SSP Support	1
5727-SS1	Base Communications	2 and 3
5727-SS1	3270 Device Emulation	4
	Leave this slot empty	5
5727-SS1	MSRJE	6
5727-SS1	Data Encryption Subroutine	7
5727-SS1	Distributed Disk File Facility (DDFF)	8
5727-SS1	C & SM	9

Programming Support Magazine 8: The following table shows which slots *must* be used for each diskette. If you do not have the diskette for a designated slot, leave that slot empty.

Diskette Label Name	Ideographic SSP Programming Support	Diskette Magazine Slot
5727-SS1	Display Station Pass-Through (DSPT)	1
5727-SS1	Distributed Data Management (DDM)	2
5727-SS1	Tape Support	3
5727-SS1	SSP-ICF Base Support	4
5727-SS1	SSP-ICF Upline Support	5
5727-SS1	SSP-ICF Finance Support	6
5727-SS1	Advanced Peer-to-Peer Networking (APPN)	7
5727-LC1	LAN Communications Support	8
5727-SS1	Software Distribution Support	9 and 10

Kanji-Preferred Version

The following shows the slots in the magazine that must be used for each diskette.

SSP Magazine 1: Insert the first SSP diskette in diskette slot 1 of SSP magazine 1. Insert the second SSP diskette in diskette slot 2, and so on until the first 10 SSP diskettes are in SSP magazine 1.

SSP Magazine 2: If there are more SSP diskettes, insert the eleventh SSP diskette in diskette slot 1 of SSP magazine 2, insert the twelfth SSP diskette in diskette slot 2, and so on until the remaining SSP diskettes are in SSP magazine 2.

Programming Support Magazine 1: The following table shows which slots *must* be used for each diskette. If you do not have the diskette for a designated slot, leave that slot empty.

Diskette Label Name	Kanji-Preferred Programming Support	Diskette Magazine Slot
5727-UT1	Utilities (DFU, WSU, SEU, and SDA)	1 and 2
5727-RG1	RPG II	3
5727-CB1	COBOL	4
5727-BA1	BASIC	5
5727-FO1	FORTRAN	6
5727-AS1	Assembler	7

Programming Support Magazine 4: The following table shows which slots *must* be used for each diskette. If you do not have the diskette for a designated slot, leave that slot empty.

Diskette Label Name	Kanji-Preferred Programming Support	Diskette Magazine Slot
5727-DS1	Development Support Utility	1 through 3
5727-QU1	Query/36	4 through 7

Programming Support Magazine 7: The following table shows which slots *must* be used for each diskette. If you do not have the diskette for a designated slot, leave that slot empty.

Diskette Label Name	Kanji-Preferred SSP Programming Support	Diskette Magazine Slot
5727-SS1	Additional SSP Support	1
5727-SS1	Base Communications	2 and 3
	Leave these slots empty	4 and 5
5727-SS1	MSRJE	6
5727-SS1	Data Encryption Subroutine	7
5727-SS1	Distributed Disk File Facility (DDFF)	8
5727-SS1	C & SM	9

Programming Support Magazine 8: The following table shows which slots *must* be used for each diskette. If you do not have the diskette for a designated slot, leave that slot empty.

Diskette Label Name	Kanji-Preferred SSP Programming Support	Diskette Magazine Slot
5727-SS1	Display Station Pass-Through (DSPT)	1
5727-SS1	Distributed Data Management (DDM)	2
5727-SS1	Tape Support	3
5727-SS1	SSP-ICF Base Support	4
5727-SS1	SSP-ICF Upline Support	5
5727-SS1	SSP-ICF Finance Support	6
5727-SS1	Advanced Peer-to-Peer Networking (APPN)	7
5727-LC1	LAN Communications Support	8
5727-SS1	Software Distribution Support	9 and 10

Southeast Asia Region (SEAR) Version

To prepare the diskette magazines for the SEAR version, use the following information, which shows the slots in the magazine that must be used for each diskette.

SSP Magazine 1: Insert the first SSP diskette in diskette slot 1 of SSP magazine 1. Insert the second SSP diskette in diskette slot 2, and so on until the first 10 SSP diskettes are in SSP magazine 1.

SSP Magazine 2: If there are more SSP diskettes, insert the eleventh SSP diskette in diskette slot 1 of SSP magazine 2, insert the twelfth SSP diskette in diskette slot 2, and so on until the remaining SSP diskettes are in SSP magazine 2.

Programming Support Magazine 1: The following table shows which slots *must* be used for each diskette. If you do not have the diskette for a designated slot, leave that slot empty.

Diskette Label Name	SEAR Programming Support	Diskette Magazine Slot
5727-UT1	Utilities (DFU, WSU, SEU, and SDA)	1 through 3
5727-RG1	RPG II	4
5727-CB1	COBOL	5
5727-BA1	BASIC	6
5727-FO1	FORTRAN	7
5727-AS1	Assembler	8

Programming Support Magazine 2: The following table shows which slots *must* be used for each diskette. If you do not have the diskette for a designated slot, leave that slot empty.

Diskette Label Name	SEAR Programming Support	Diskette Magazine Slot
5727-WP1	DisplayWrite/36	1 through 4
5727-WP2	English Language Dictionary	5 and 6
5727-BG1	Business Graphics Utilities/36	7 and 8
5727-WP2	Portuguese Language Dictionary	9

Programming Support Magazine 3: The following table shows which slots *must* be used for each diskette. If you do not have the diskette for a designated slot, leave that slot empty.

Diskette Label Name	SEAR Programming Support	Diskette Magazine Slot
5727-WP3	Personal Services/36	1 through 8

Programming Support Magazine 4: The following table shows which slots *must* be used for each diskette. If you do not have the diskette for a designated slot, leave that slot empty.

Diskette Label Name	SEAR Programming Support	Diskette Magazine Slot
5727-DS1	Development Support Utility	1 through 4
5727-QU2	Query/36	5 through 8

Programming Support Magazine 5: If you have DisplayWrite/36 language dictionaries, the following table shows which slots *must* be used for each diskette. If you do not have the diskette for a designated slot, leave that slot empty.

Diskette Label Name	SEAR Dictionary Feature	Diskette Magazine Slot
5727-SS1	Dutch	1
5727-SS1	Icelandic	2
5727-SS1	French I	3
5727-SS1	French II (Canada)	4
5727-SS1	Spanish	5
5727-SS1	Italian	6
5727-SS1	Danish	7
5727-SS1	German	8
5727-SS1	Norwegian	9
5727-SS1	Swedish	10

Programming Support Magazine 6: The following table shows which slots *must* be used for each diskette. If you do not have the diskette for a designated slot, leave that slot empty.

Diskette Label Name	SEAR Programming Support	Diskette Magazine Slot
5727-WS1	PC Support/36	1 through 3
5727-WS1	PC Support/36 Expansion Feature	4
5727-WS1	PC Support/36 Work Station Feature	5

Programming Support Magazine 7: The following table shows which slots *must* be used for each diskette. If you do not have the diskette for a designated slot, leave that slot empty.

Diskette Label Name	SEAR SSP Programming Support	Diskette Magazine Slot
5727-SS1	Additional SSP Support	1
5727-SS1	Base Communications	2 and 3
5727-SS1	3270 Device Emulation	4
5727-EP1	3278 Device Emulation via IBM Personal Computer	5
5727-SS1	MSRJE	6
5727-SS1	Data Encryption Subroutine	7
5727-SS1	Distributed Disk File Facility (DDFF)	8
5727-SS1	C & SM	9

Programming Support Magazine 8: The following table shows which slots *must* be used for each diskette. If you do not have the diskette for a designated slot, leave that slot empty.

Diskette Label Name	SEAR SSP Programming Support	Diskette Magazine Slot
5727-SS1	Display Station Pass-Through (DSPT)	1
5727-SS1	Distributed Data Management (DDM)	2
5727-SS1	Tape Support	3
5727-SS1	SSP-ICF Base Support	4
5727-SS1	SSP-ICF Upline Support	5
5727-SS1	SSP-ICF Finance Support	6
5727-SS1	Advanced Peer-to-Peer Networking (APPN)	7
5727-LC1	LAN Communications Support	8
5727-SS1	Software Distribution Support	9 and 10

READER'S COMMENT FORM

Please use this form only to identify publication errors or to request changes in publications. Direct any requests for additional publications, technical questions about IBM systems, changes in IBM programming support, and so on, to your IBM representative or to your IBM-approved remarketer. You may use this form to communicate your comments about this publication, its organization, or subject matter, with the understanding that IBM may use or distribute whatever information you supply in any way it believes appropriate without incurring any obligation to you.

- If your comment does not need a reply (for example, pointing out a typing error), check this box and do not include your name and address below. If your comment is applicable, we will include it in the next revision of the manual.
- If you would like a reply, check this box. Be sure to print your name and address below.

Page number(s):

Comment(s):

Please contact your IBM representative or your IBM-approved remarketer to request additional publications.

Name

Company or
Organization

Address

City

State

Zip Code

Phone No.

Area Code

Fold and tape. **Please do not staple.**



NO POSTAGE
NECESSARY
IF MAILED IN THE
UNITED STATES

BUSINESS REPLY MAIL

FIRST CLASS / PERMIT NO. 40 / ARMONK, NEW YORK

POSTAGE WILL BE PAID BY ADDRESSEE

International Business Machines Corporation
Information Development
Department 245
Rochester, Minnesota, U.S.A. 55901



Fold and tape. **Please do not staple.**





Updating to a New Release - 5360, 5362

International Business Machines Corporation

File Number
S36-34

Order Number
SC21-9051-4

Printed in U.S.A.

SC21-9051-04

