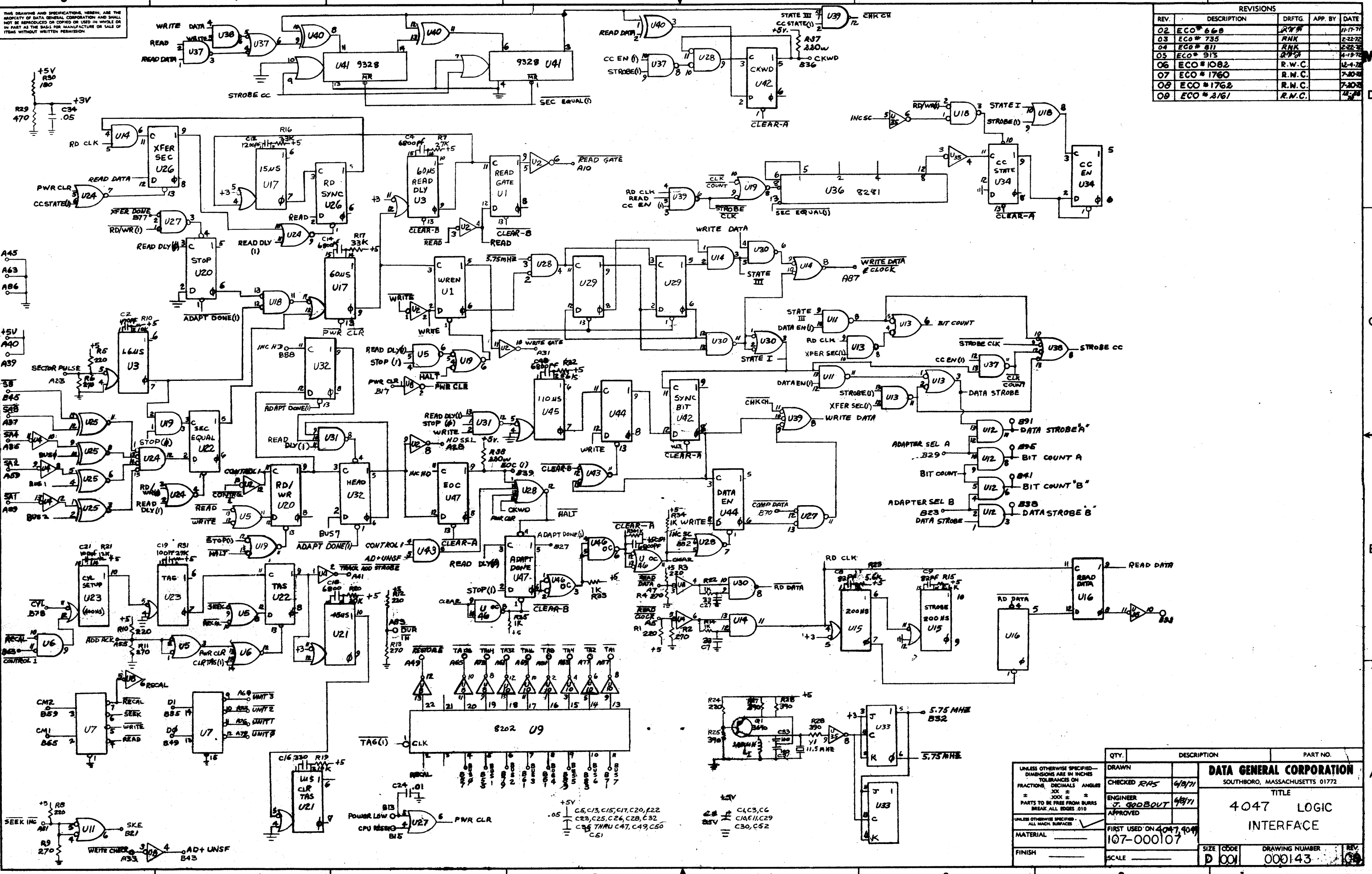


THIS DRAWING AND SPECIFICATIONS, HEREIN, ARE THE PROPERTY OF DATA GENERAL CORPORATION AND SHALL NOT BE REPRODUCED OR COPIED OR USED IN WHOLE OR IN PART AS THE BASIS FOR MANUFACTURE OR SALE OF ITEMS WITHOUT WRITTEN PERMISSION.

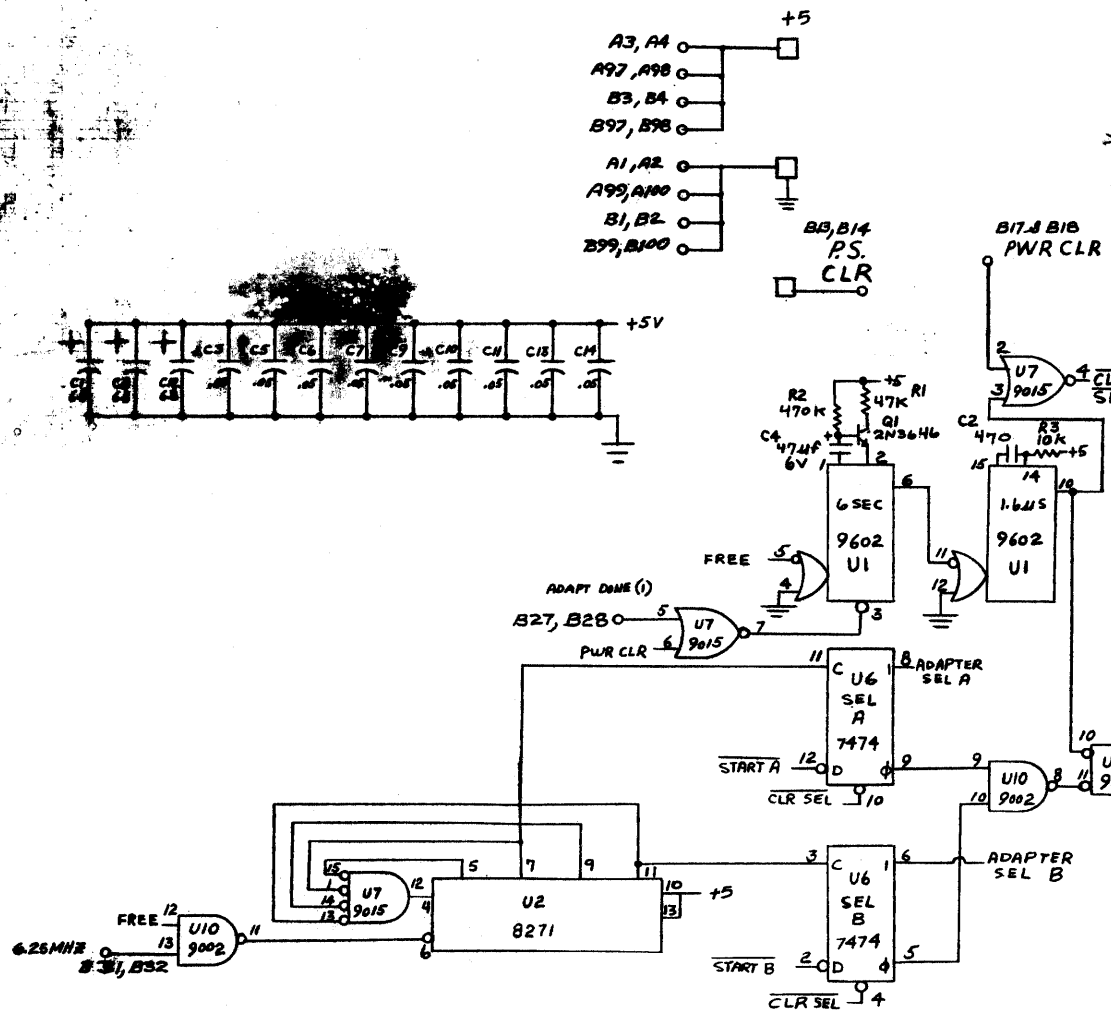
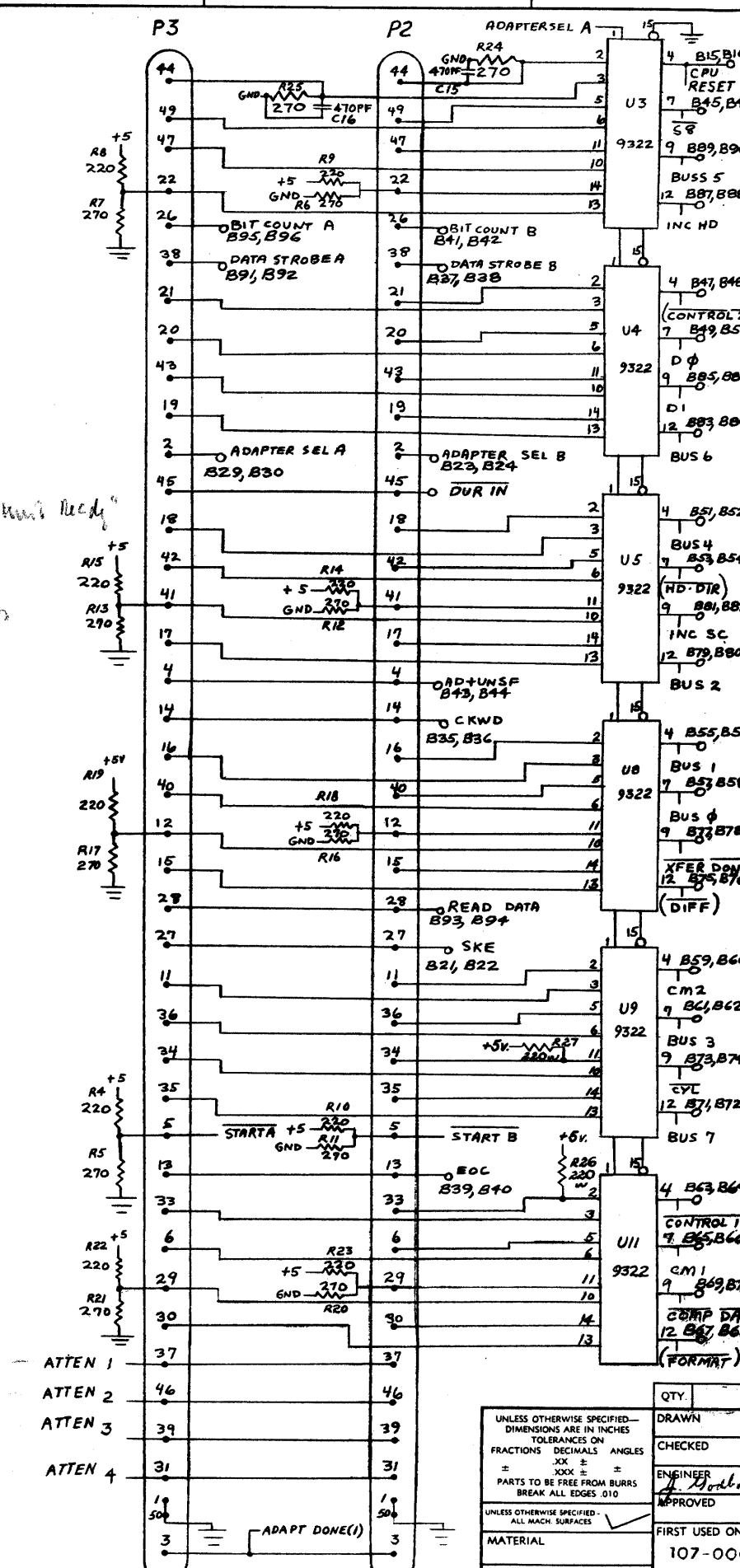
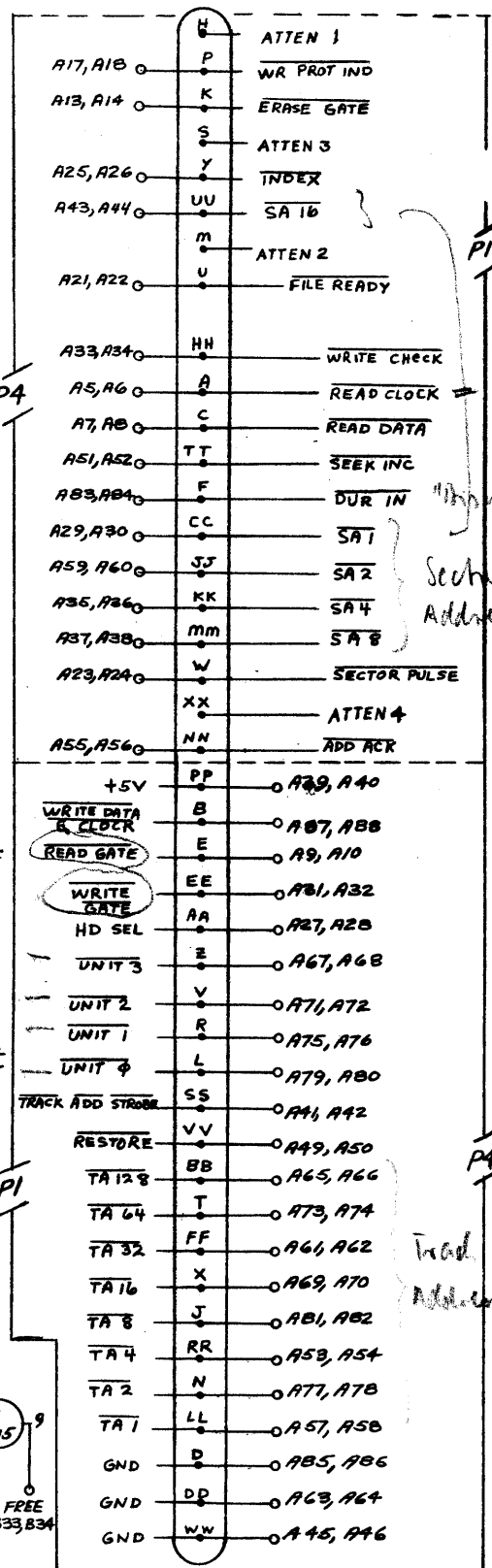
REVISIONS				
REV.	DESCRIPTION	DRFTG.	APP. BY	DATE
02	ECO # 668	R.V.W.		11-17-71
03	ECO # 735	R.N.K.		2-22-72
04	ECO # 811	R.N.K.		2-22-72
05	ECO # 913	R.V.W.		4-19-72
06	ECO # 1082	R.W.C.		12-1-72
07	ECO # 1760	R.W.C.		7-30-73
08	ECO # 1762	R.W.C.		7-30-73
09	ECO # 2161	R.N.C.		4-17-73



QTY.	DESCRIPTION	PART NO.
	DRAWN	
	CHECKED RAS 6/10/71	
	ENGINEER J. GOODBOUT 6/9/71	
	APPROVED	
	FIRST USED ON 4047, 909	
	107-000107	
	SCALE	
DATA GENERAL CORPORATION SOUTHBORO, MASSACHUSETTS 01772 TITLE 4047 LOGIC INTERFACE DRAWING NUMBER 000143		
P 001		000143

THIS DRAWING AND SPECIFICATIONS, HEREIN, ARE THE PROPERTY OF DATA GENERAL CORPORATION AND SHALL NOT BE REPRODUCED OR COPIED OR USED IN WHOLE OR IN PART AS THE BASIS FOR MANUFACTURE OR SALE OF ITEMS WITHOUT WRITTEN PERMISSION.

REVISIONS				
REV.	DESCRIPTION	DRFTG.	APP. BY	DATE
02	PERECO 754	R.W.C.		4-19-72
03	ECO# 1762	R.W.C.		7-20-72



QTY.	DESCRIPTION	PART NO.
	DRAWN	
	CHECKED	
	ENGINEER	
	APPROVED	
	FIRST USED ON 4047, 4049	
	MATERIAL	
	FINISH	

UNLESS OTHERWISE SPECIFIED— DIMENSIONS ARE IN INCHES TOLERANCES ON FRACTIONS DECIMALS ANGLES ± .005 ± .010 ± .015 PARTS TO BE FREE FROM BURRS BREAK ALL EDGES .010			
UNLESS OTHERWISE SPECIFIED— ALL MACH. SURFACES			

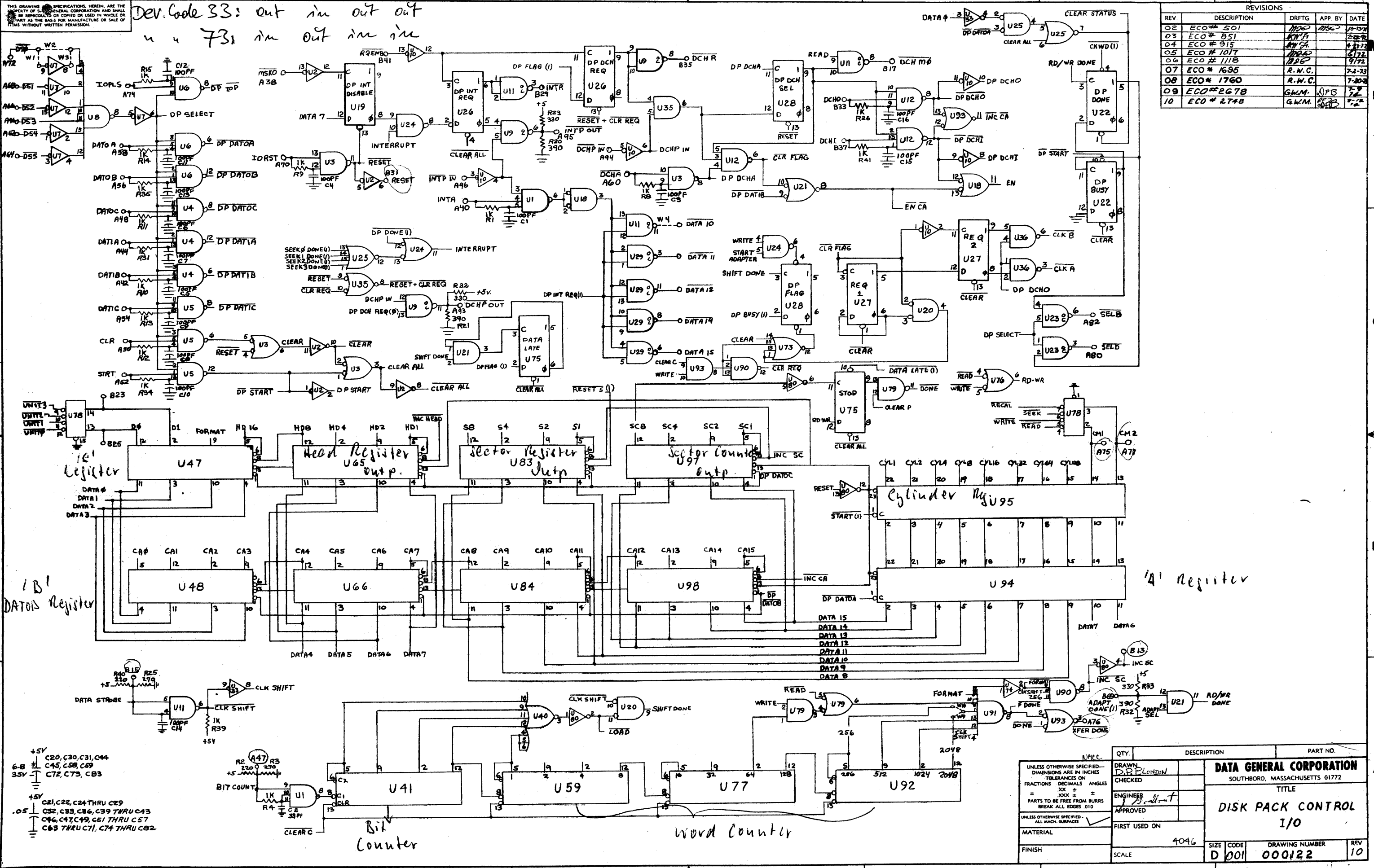
DRAWN				DATA GENERAL CORPORATION	
CHECKED				SOUTHBORO, MASSACHUSETTS 01772	
ENGINEER				TITLE	
APPROVED				4047 PLUG	
FIRST USED ON 4047, 4049				INTERFACE	
MATERIAL				SIZE	CODE
				D	001
FINISH				DRAWING NUMBER	REV
				107-000106-01	03
SCALE					

W1 W2 W3 W4

Dev. Code 83: out in out out
u u 73: in out in in

THIS DRAWING AND SPECIFICATIONS, HEREIN, ARE THE PROPERTY OF DATA GENERAL CORPORATION AND SHALL NOT BE REPRODUCED OR COPIED OR USED IN WHOLE OR IN PART AS THE BASIS FOR MANUFACTURE OR SALE OF THIS WITHOUT WRITTEN PERMISSION.

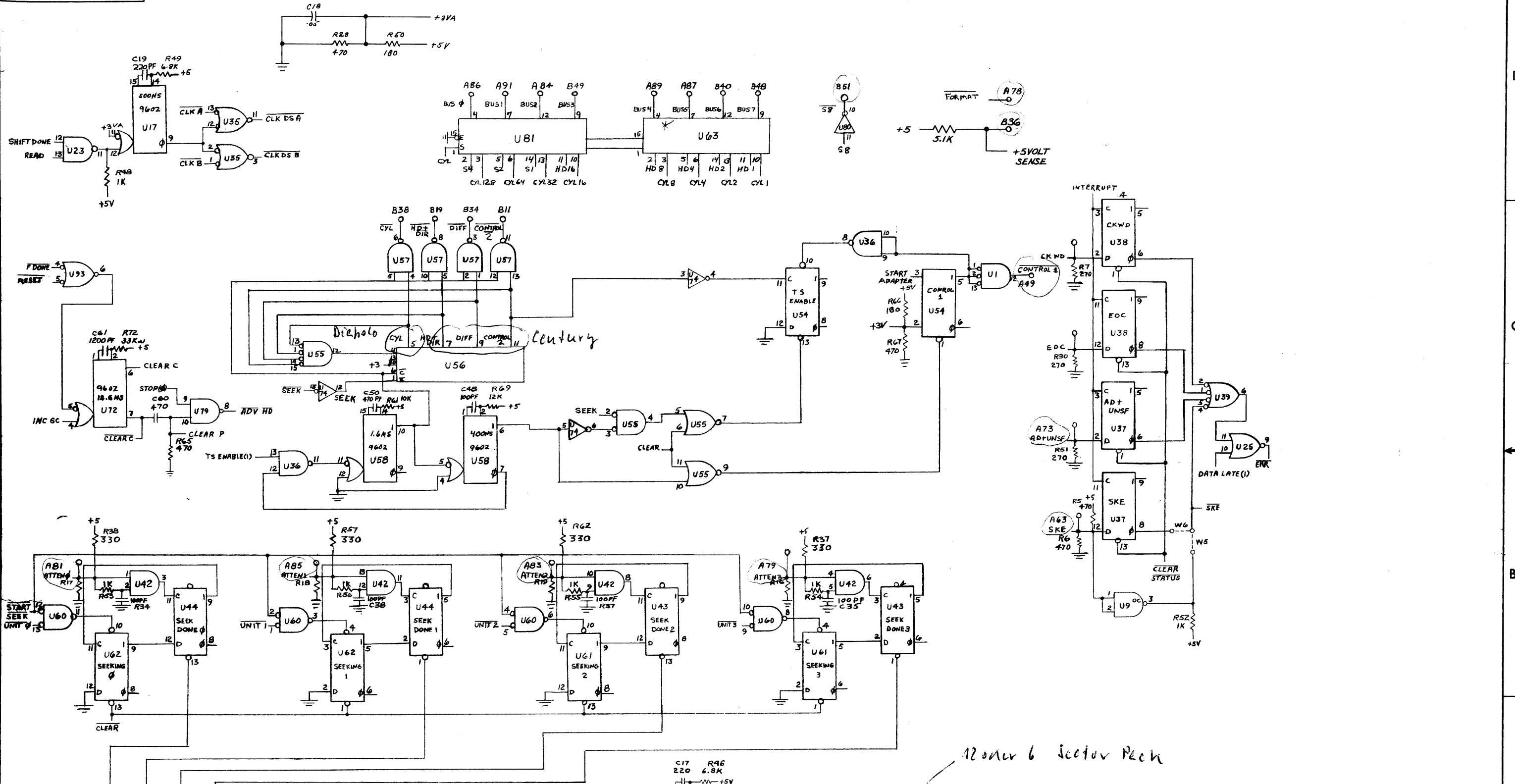
REVISIONS				
REV.	DESCRIPTION	DRFTG	APP BY	DATE
02	ECO # 501	W.P.	W.P.	10-19-71
03	ECO # 851	R.W.C.	R.W.C.	2-2-72
04	ECO # 915	R.W.C.	R.W.C.	4-21-72
05	ECO # 1017	W.P.	W.P.	6-1-72
06	ECO # 1118	W.P.	W.P.	9-17-72
07	ECO # 1695	R.W.C.	R.W.C.	7-2-73
08	ECO # 1760	R.W.C.	R.W.C.	7-20-73
09	ECO # 2678	G.M.M.	G.M.M.	7-2-74
10	ECO # 2748	G.M.M.	G.M.M.	7-2-74



UNLESS OTHERWISE SPECIFIED - DIMENSIONS ARE IN INCHES - TOLERANCES ON FRACTIONS - DECIMALS - ANGLES		DATA GENERAL CORPORATION	
= .001		SOUTHBORO, MASSACHUSETTS 01772	
= .005		TITLE	
= .010		DISK PACK CONTROL	
= .020		I/O	
= .030		DRAWING NUMBER	
= .040		000122	
= .050		REV	
= .060		10	
= .070		SCALE	
= .080		4046	
= .090		FIRST USED ON	
= .100		SCALE	
QTY.	DESCRIPTION	PART NO.	
1	DRAWN	A	
1	CHECKED	A	
1	ENGINEER	A	
1	APPROVED	A	
1	FIRST USED ON	A	
1	SCALE	A	

THIS DRAWING AND SPECIFICATIONS, HEREIN, ARE THE PROPERTY OF DATA GENERAL CORPORATION AND SHALL NOT BE REPRODUCED OR COPIED OR USED IN WHOLE OR IN PART AS THE BASIS FOR MANUFACTURE OR SALE OF ITEMS WITHOUT WRITTEN PERMISSION.

REVISIONS				
REV	DESCRIPTION	DRFTG	APP BY	DATE



12 on 6 Sector Pack

U45

DATA 1 DATA 2 DATA 3 DATA 4

U19

START ADAPTER

U17

500NS

START ADAPTER

U72

RESET

QTY.	DESCRIPTION	PART NO.

UNLESS OTHERWISE SPECIFIED - DIMENSIONS ARE IN INCHES TOLERANCES ON FRACTIONS DECIMALS ANGLES .XX ± . PARTS TO BE FREE FROM BURRS BREAK ALL EDGES .010 UNLESS OTHERWISE SPECIFIED - ALL MACH. SURFACES

MATERIAL FINISH

DATA GENERAL CORPORATION

SOUTHBORO, MASSACHUSETTS 01772

TITLE

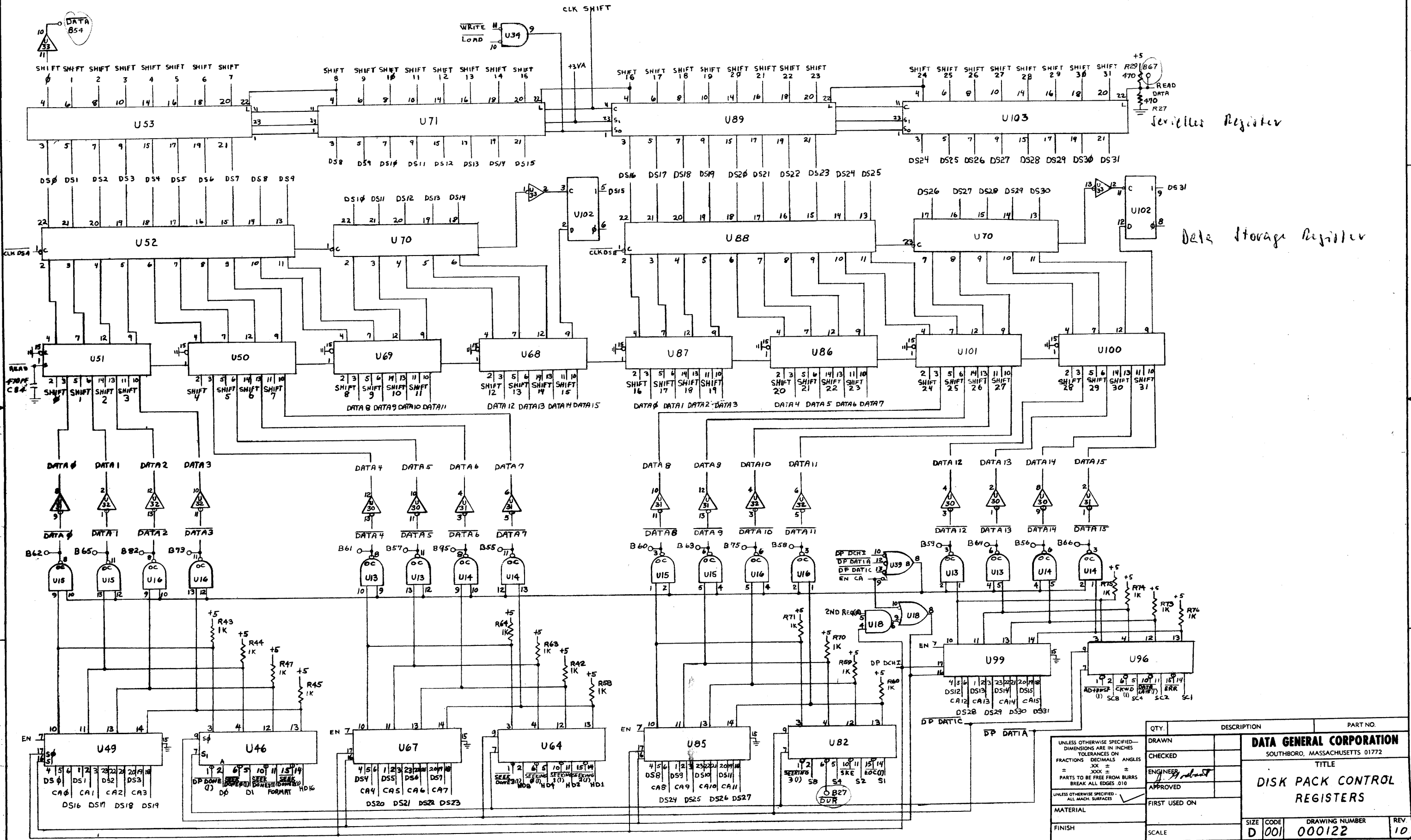
DISK PACK CONTROL TIMING

SIZE CODE DRAWING NUMBER REV

D 001 000122 10

THIS DRAWING AND SPECIFICATIONS HEREIN ARE THE PROPERTY OF DATA GENERAL CORPORATION AND SHALL NOT BE REPRODUCED OR COPIED OR USED IN WHOLE OR IN PART AS THE BASIS FOR MANUFACTURE OR SALE OF ITEMS WITHOUT WRITTEN PERMISSION.

REVISIONS				
REV.	DESCRIPTION	DRFTG.	APP. BY	DATE



Serial Register

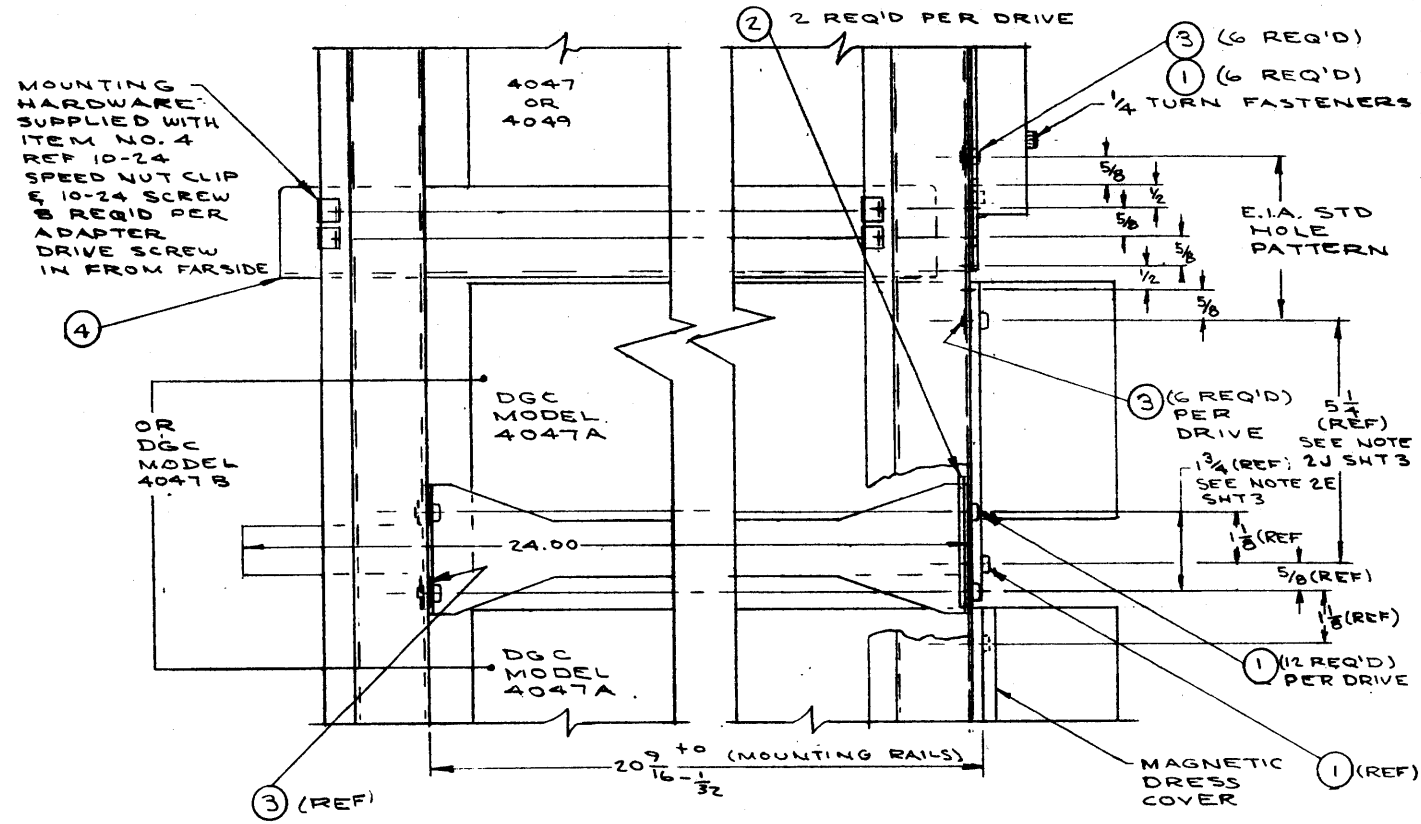
Data Storage Register

QTY.		DESCRIPTION	PART NO.

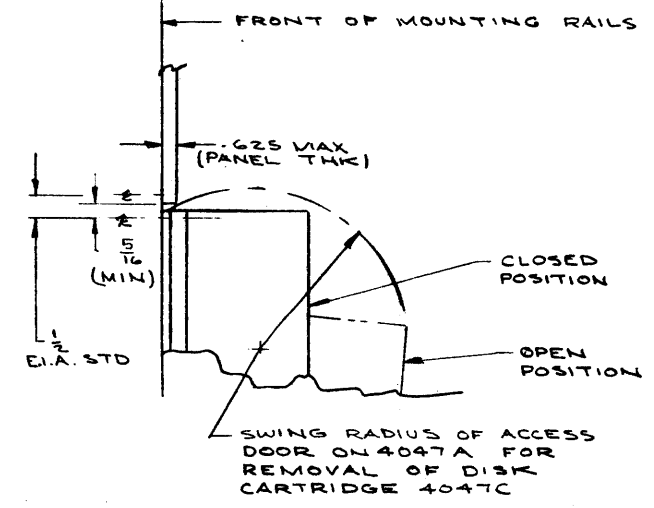
DRAWN				DATA GENERAL CORPORATION			
CHECKED				SOUTHBORO, MASSACHUSETTS 01772			
ENGINEER				TITLE			
APPROVED				DISK PACK CONTROL			
FIRST USED ON				REGISTERS			
MATERIAL		FINISH		SCALE		DRAWING NUMBER	
						000122	
						REV. 10	

THIS DRAWING AND SPECIFICATIONS HEREIN, ARE THE PROPERTY OF DATA GENERAL CORPORATION AND SHALL NOT BE REPRODUCED OR COPIED OR USED IN WHOLE OR IN PART AS THE BASIS FOR MANUFACTURE OR SALE OF ITEMS WITHOUT WRITTEN PERMISSION.

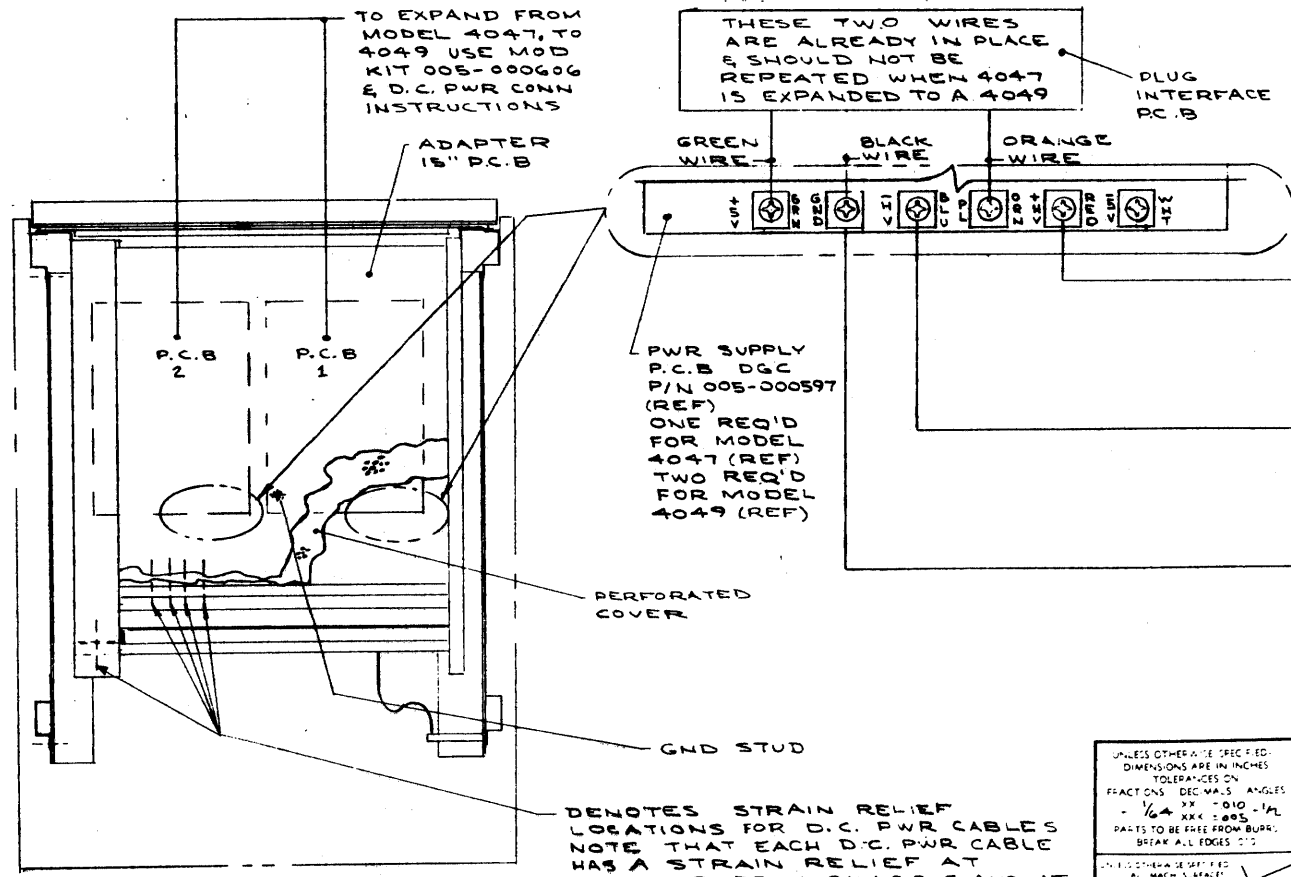
REVISIONS				
REV	DESCRIPTION	DRFTG	APP BY	DATE



SIDE VIEW SHOWING RAILS & MOUNTING LOCATIONS
SCALE 1:2
SEE SHT 1



SIDE VIEW SHOWING MOUNTING LIMITATIONS CREATED BY LOAD DOOR



VIEW A-A (SEE SHT 1)
SCALE NONE

TO EXPAND FROM MODEL 4047 TO 4049 USE MOD KIT 005-000606 & D.C. PWR CONN INSTRUCTIONS

THESE TWO WIRES ARE ALREADY IN PLACE & SHOULD NOT BE REPEATED WHEN 4047 IS EXPANDED TO A 4049

DC POWER CABLE CONNECTIONS INSTRUCTIONS (FROM 4047 OR 4049 TO EACH 4047A OR 4047B)

RED HIGH VOLTAGE +15VDC
TWO RED WIRES IN EACH POWER CABLE (TWO RED WIRES REQ'D FOR EACH MODEL 4047A INTERFACE) (FOUR RED WIRES REQ'D FOR EACH MODEL 4047B INTERFACE) FOUR WIRES MAXIMUM

BLUE HIGH VOLTAGE -15VDC
TWO BLUE WIRES IN EACH POWER CABLE (TWO BLUE WIRES REQ'D FOR EACH MODEL 4047A INTERFACE) (FOUR BLUE WIRES FOR EACH MODEL 4047B INTERFACE) FOUR WIRES MAXIMUM

BRAIDED GROUND ONE PER D.C. POWER CABLE (ONE GROUND FOR EACH MODEL 4047A INTERFACE) (TWO GROUNDS FOR EACH MODEL 4047B INTERFACE) (SEE NOTE A)

ONE BLACK GROUND WIRE PER D.C. PWR SUPPLY ASSEMBLY (005-000597), TIED TO GND STUD AS DENOTED ON VIEW A-A

DENOTES STRAIN RELIEF LOCATIONS FOR D.C. PWR CABLES NOTE THAT EACH D.C. PWR CABLE HAS A STRAIN RELIEF AT POWER SUPPLY CHASSIS AND AT THE POWER BRACKET

QTY	DESCRIPTION	PART NO

UNLESS OTHERWISE SPECIFIED DIMENSIONS ARE IN INCHES TOLERANCES ON FRACTIONS - DECIMALS - ANGLES - 1/64 XXX - 0.05 - 1/2 PARTS TO BE FREE FROM BURRS BREAK ALL EDGES 1:1	DRAWN L KRAY 12-17-71	DATA GENERAL CORPORATION SOUTHBORO MASSACHUSETTS 01772 TITLE _____ _____ _____
	CHECKED	
	ENGINEER	
	APPROVED	
	FIRST USED ON	
MATERIAL TL		
FIN SH TL		

	SIZE CODE D 010	DRAWING NUMBER 000012	REV 01
	SCALE AS NOTED		

THIS DRAWING AND SPECIFICATIONS HEREIN, ARE THE PROPERTY OF DATA GENERAL CORPORATION AND SHALL NOT BE REPRODUCED OR COPIED OR USED IN WHOLE OR IN PART AS THE BASIS FOR MANUFACTURE OR SALE OF ITEMS WITHOUT WRITTEN PERMISSION.

REVISIONS			
REV.	DESCRIPTION	DRFTG.	APP. BY DATE

NOTES:

1. CONFIGURATION GUIDE

- A. Model 4047B is shipped as two separate drives.
- B. If Model 4047B is used mount removable Disk Cartridge Drive below fixed Disk Cartridge Drive so that swing radius of the load door on Disk Drive doesn't create a configuration problem. (See sheet 2 DGC 010-000012 in zone D-1, D-2, and D-3).
- C. P3 on Adapter (4047 or 4049) is only used for dual processor mode. (See Figure 1-4 in DGC instruction manual).
- D. Cable or cables used to interface Adapter (4047 or 4049) to Central Processor or processors are supplied with Model 4046 control (these are DGC P/N 005-000468 or 005-000803).
- E. Unit placement in the rack & cooling guide (See DGC 012-000012, Sheet 1).

2. SUGGESTED INSTALLATION PROCEDURE

- A. Remove side panels from cabinet, DGC Model No. 1012A or 1012B.
- B. Establish "Start Point" for particular configuration (See DGC 010-000012, Sheet 1) and install (item 4) (two places as shown) using Mounting hardware supplied.
- C. Install clip nuts in specified locations per DGC DWG 010-000012, Sheet 1 & Sheet 2 (NOTE ALL hardware dimensions shown are typical for both front vertical mounting rails.)
- D. Remove slides from 4047A or 4047B and attach mounting clips to stationary portion of slides, 20-9/16 inches apart (See DGC DWG 010-000012, Sheet 1 & Sheet 2)
- E. Mount slides as shown on DGC DWG 010-000012 Sheet 2 (As required). Note that the slide mounting hardware is located on 1-3/4" centers. Extends slides forward until slide lock is engaged.

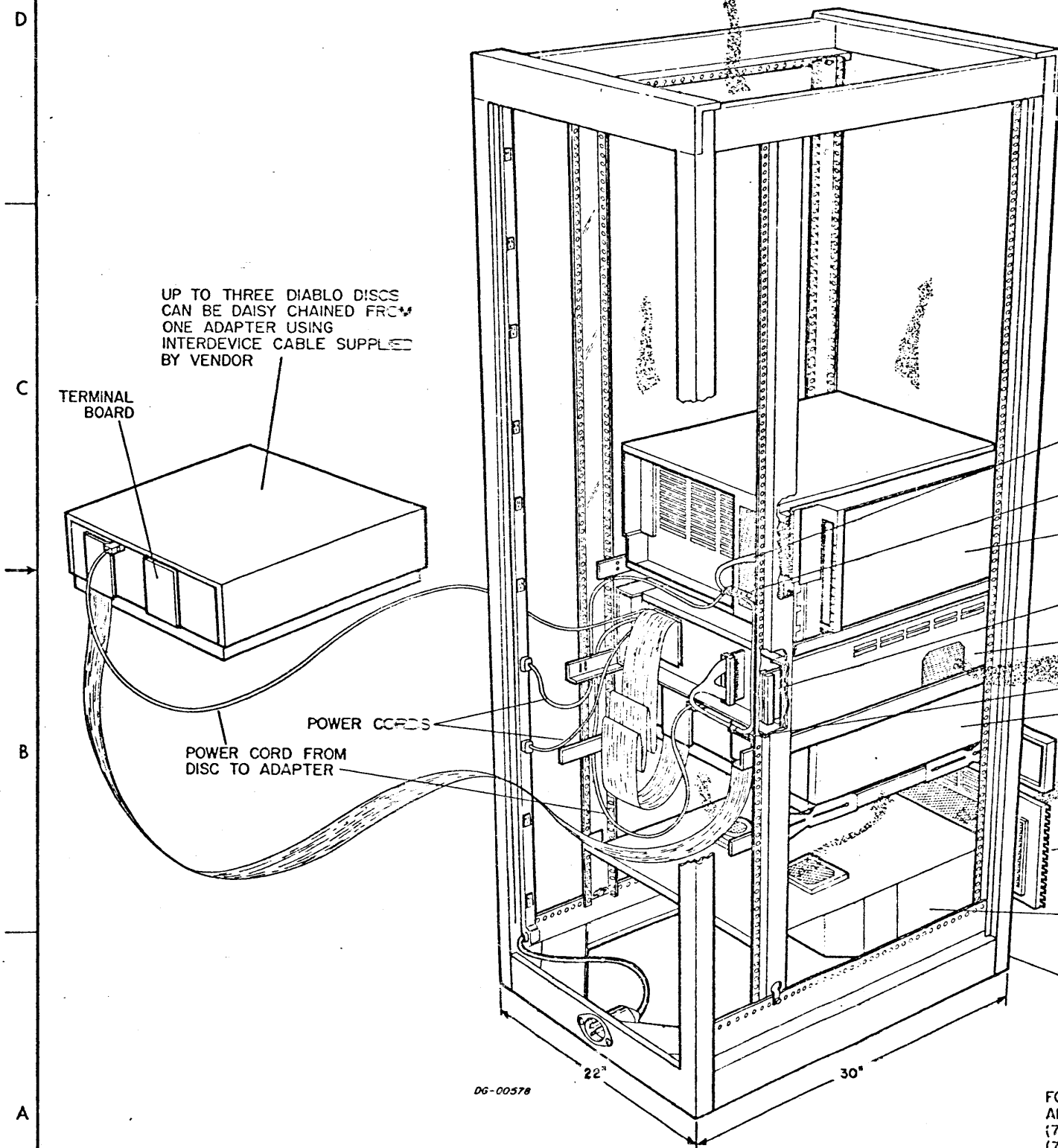
- F. Insert Model 4047A or 4047B into slides, engaging guide bullets in back of slides, then engage friction fasteners at bottom of slides.
- G. CAUTION: At this time remove top cover of 4047A or 4047B and remove clamp that is holding Head Positioner over track 0 (this clamp is used for shipping only) then replace top cover. This step is a necessary prerequisite before Disk Cartridge (Model 4047C) can be inserted.
- H. Unlock slides and push Model 4047A or 4047B into the rack until they stop against the front vertical mounting rails.
- J. Secure Model 4047A or 4047B with 10-32 screws as denoted on Sheet 2, DGC 010-000012, then mount magnet dress covers over hardware.
- K. Slide adapter (Model 4047 or 4049) onto guides (item 4) and secure to front vertical mounting rails with 10-32 screws, mount console and secure console using 1/4 turn fasteners.
- L. Install cables as denoted on Sheet 1 DGC 010-000012 (NOTE DAISY-CHAIN OF SIGNAL CABLING.) For expansion of 4047, 4047A or 4047B, See DGC power cable connection instruction on Sheet 2, zone B-1 (DGC 010-000012).

<small>UNLESS OTHERWISE SPECIFIED— DIMENSIONS ARE IN INCHES TOLERANCES ON FRACTIONS DECIMALS ANGLES ± .1 .005 ± .5 PARTS TO BE FREE FROM BURRS BREAK ALL EDGES 010</small>	DRAWN L. KRAY 11-2-72	DATA GENERAL CORPORATION	
	CHECKED	SOUTHBORO, MASSACHUSETTS 01772	
	ENGINEER	TITLE	
	APPROVED		
<small>UNLESS OTHERWISE SPECIFIED— ALL MACH. SURFACES</small>	FIRST USED ON	SIZE	CODE
MATERIAL		D	010
FINISH	SCALE	DRAWING NUMBER	REV
		000012	01

THIS DRAWING AND SPECIFICATIONS HEREIN ARE THE PROPERTY OF DATA GENERAL CORPORATION AND SHALL NOT BE REPRODUCED OR COPIED OR USED IN WHOLE OR IN PART AS THE BASIS FOR MANUFACTURE OR SALE OF ITEMS WITHOUT WRITTEN PERMISSION.

REVISIONS			
REV	DESCRIPTION	DATE	APP BY DATE

DO NOT BLOCK LOUVERS ON TOP OF CABINET



UP TO THREE DIABLO DISCS CAN BE DAISY CHAINED FROM ONE ADAPTER USING INTERDEVICE CABLE SUPPLIED BY VENDOR

TERMINAL BOARD

POWER CORDS

POWER CORD FROM DISC TO ADAPTER

I/O CABLE
 IO36A FOR 1200, 1230, 800, 840
 IO36B FOR 1210, 1220, 820, 2/4, 2/10

STRAIN RELIEF CLAMP

ANY NOVA LINE COMPUTER

CONNECTOR USED ONLY IF ADAPTER IS CABLED TO TWO COMPUTERS

ADAPTER

STRAIN RELIEF CLAMP

DIABLO DISC

3 1/2" FILLER PANEL

CAUTION
 DO NOT OBSTRUCT AIR FLOW

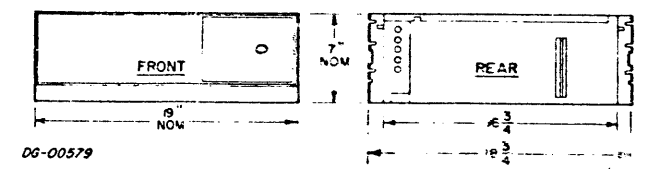
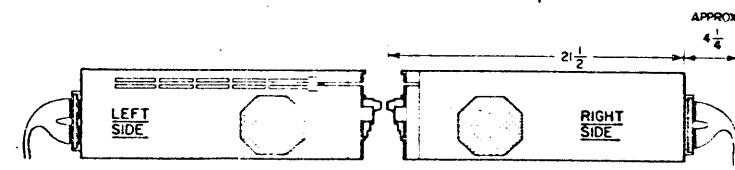
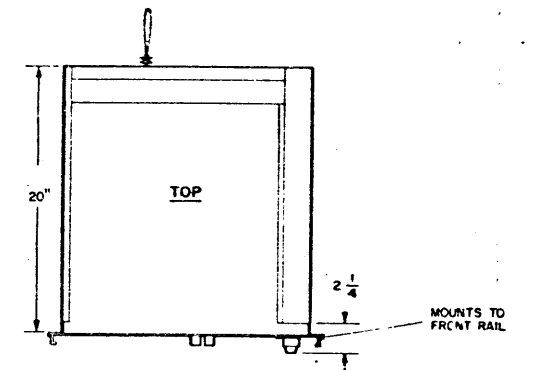
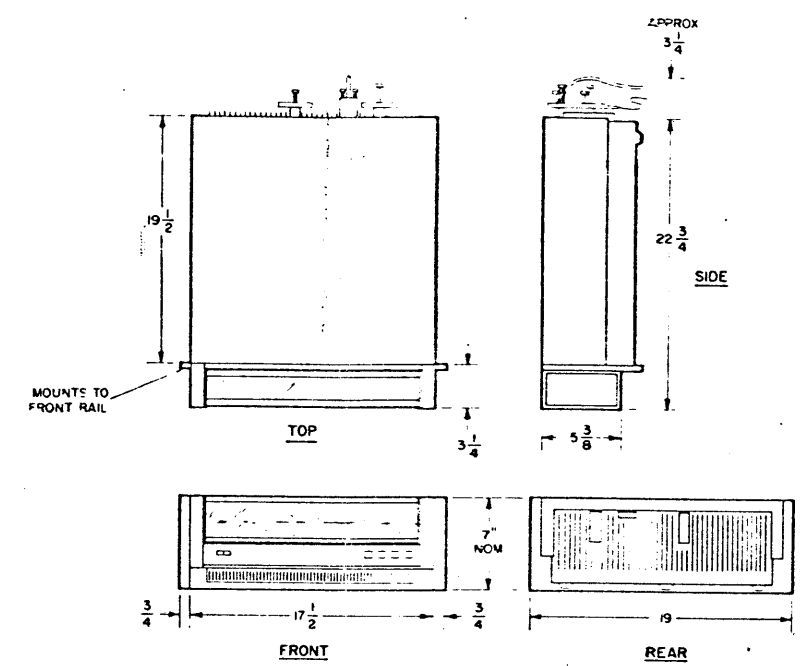
ALUMINUM GRILL ASSY
 005 001486

BLOWER, AMCO, 8-350
 OR EQUIVALENT
 425 CFM
 115 V, 60 Hz
 1500 RPM, 1.75A, 132W

9" CABINET, 1012 SERIES,*
 BLOWER INCLUDED

DG-00578

FOR STABILITY, CABINETS 1012D (74" HT) AND 1012E (41 1/2" HT) ARE MOUNTED ON DGC BASE, NO. 112-000038; CABINETS 1012F (71 9/16", 3-BAY), 1012G (71 9/16", 2-BAY), 1012H (71 9/16", 3-BAY), 1012I (71 9/16", 4-BAY), AND 1012J (37 5/16", 1-BAY) AIR EQUIPPED WITH ANTI-TIP LEGS, DGC NO. 112-000045, AND LEVELOR LEGS, DGC NO. 123-000138.

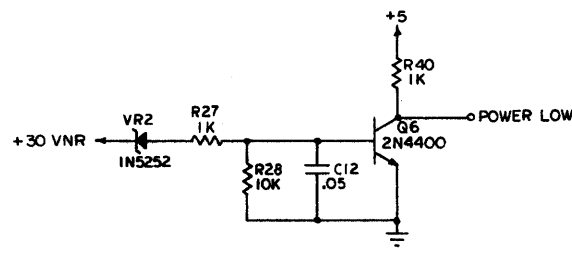
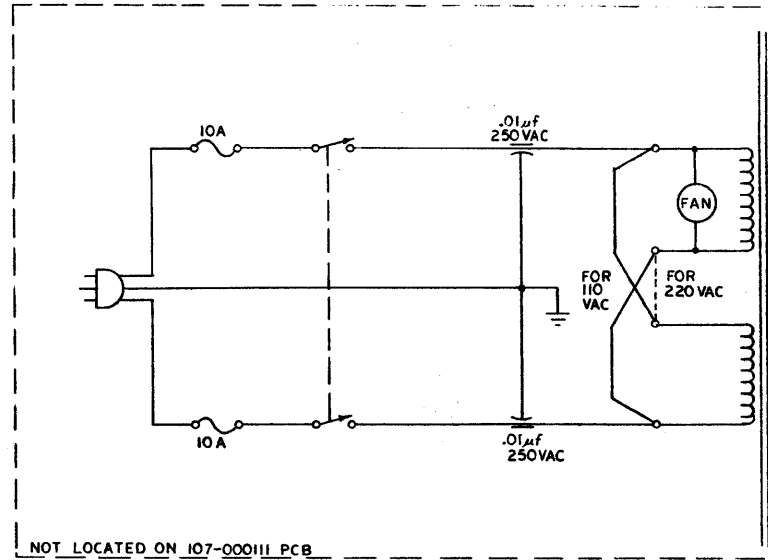
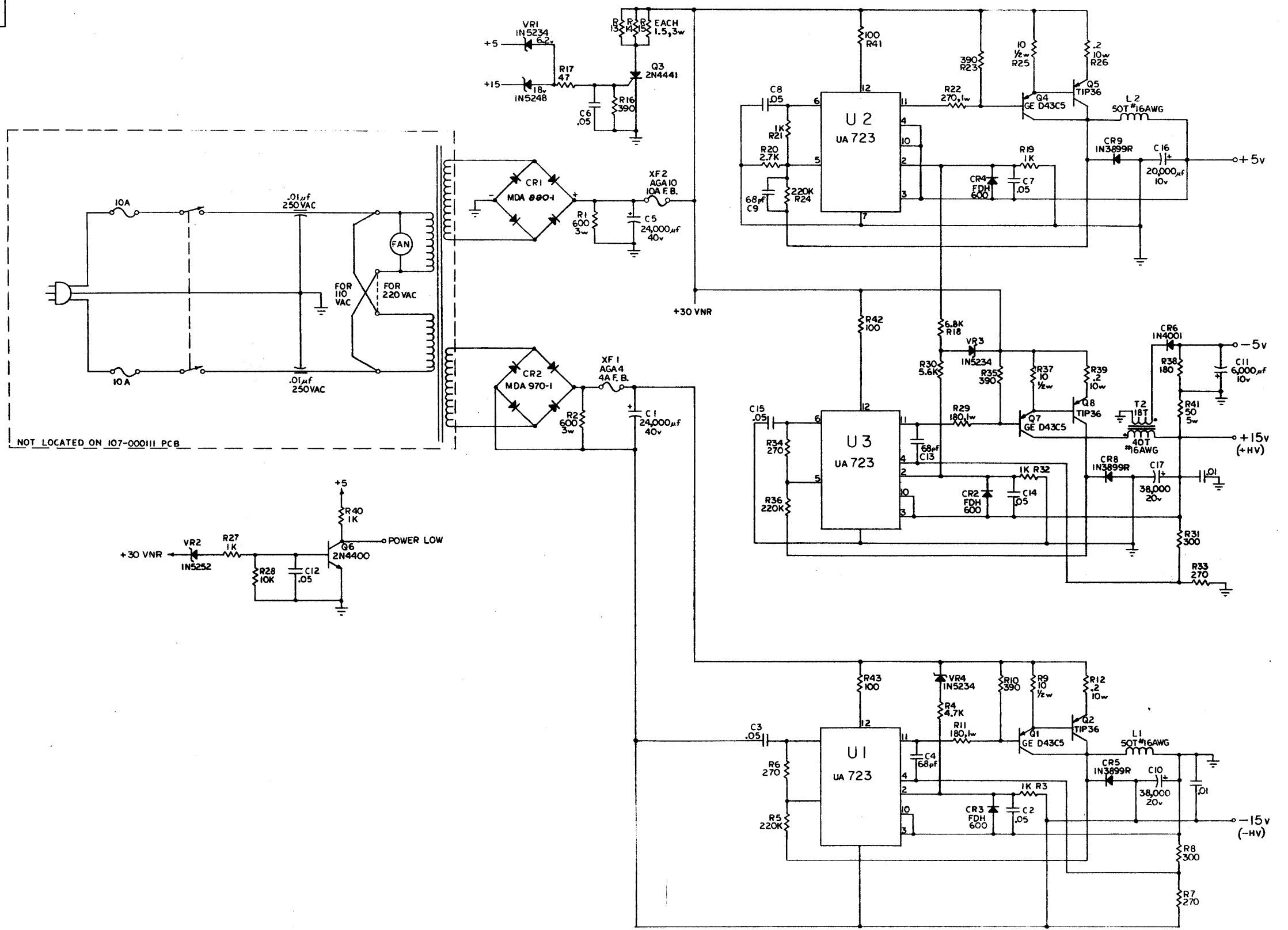


QTY	DESCRIPTION	PART NO

UNLESS OTHERWISE SPECIFIED - DIMENSIONS ARE IN INCHES	DRAWN		DATA GENERAL CORPORATION SOUTH BRIDGE, MASSACHUSETTS 01772 TITLE DIABLO DISC RACK INSTALLATION MODEL 31
FRACTIONS - DECIMALS - ANGLES	CHECKED		
PARTS TO BE TESTED - BLENDED	ENGINEER		
INSTRUCTIONS - SEE DRAWING	APPROVED		
MATERIAL	FIRST USED ON		
FINISH	SCALE		SIZE CODE D 010
			DRAWING NUMBER 000045
			REV 00

THIS DRAWING AND SPECIFICATIONS, HEREIN, ARE THE PROPERTY OF DATA GENERAL CORPORATION AND SHALL NOT BE REPRODUCED OR COPIED OR USED IN WHOLE OR IN PART AS THE BASIS FOR MANUFACTURE OR SALE OF ITEMS WITHOUT WRITTEN PERMISSION.

REVISIONS				
REV.	DESCRIPTION	DRFTG.	APP. BY	DATE
01	REV PER MKD PRINT	WJG		5-17-71
02	ECO #667	WJG		11-17-71
03	ECO #883	WJG		3-4-72
04	ECO #912	RWF		4-20-72
05	ECO #2211	R.M.C.		1-17-74



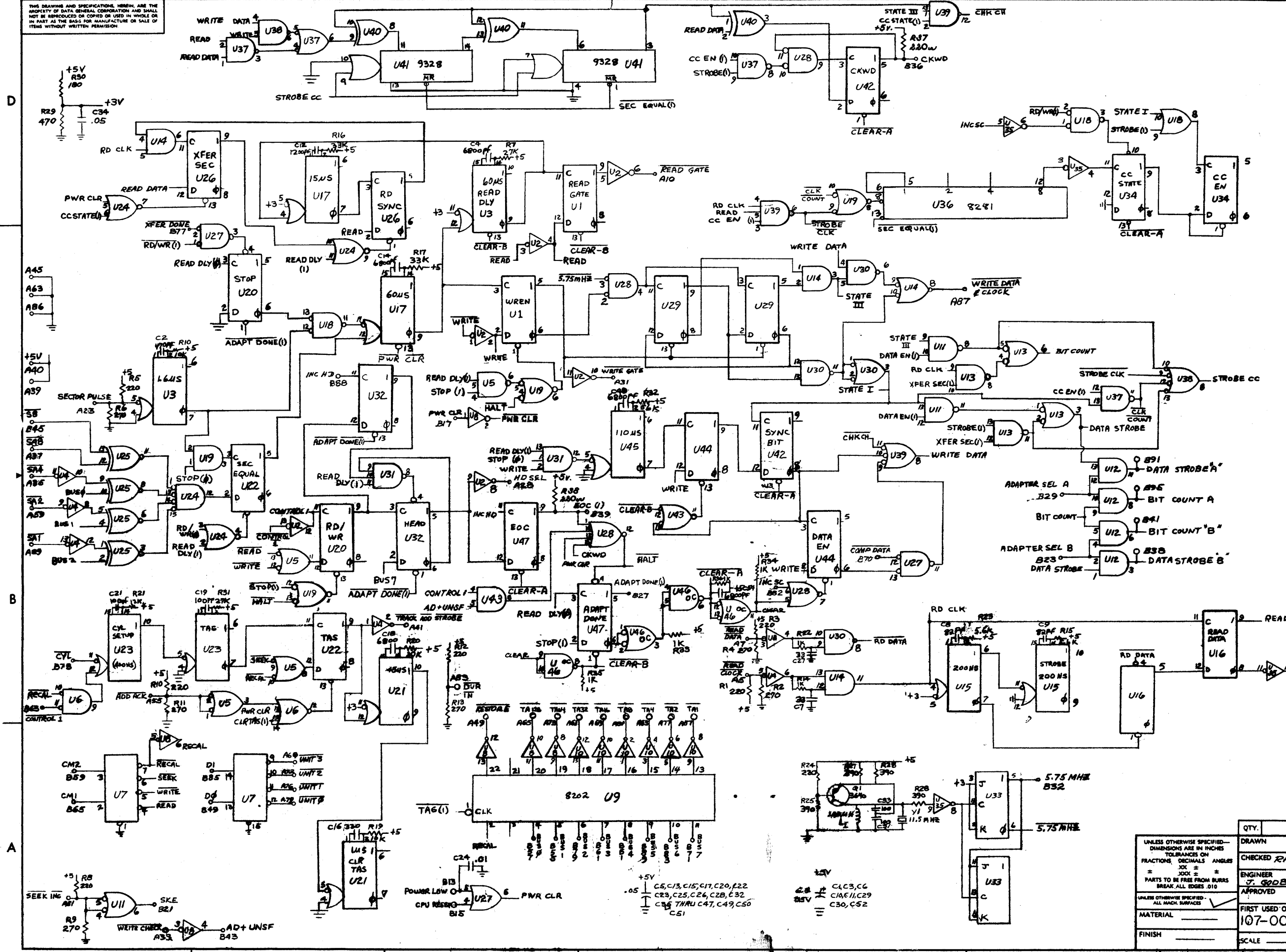
NOTES: UNLESS OTHERWISE INDICATED,
 1. ALL RESISTORS ARE 1/4w, ±5%
 2. ALL CAPACITORS ARE IN MICROFARADS

QTY.	DESCRIPTION	PART NO.
	UNLESS OTHERWISE SPECIFIED— DIMENSIONS ARE IN INCHES TOLERANCES ON FRACTIONS DECIMALS ANGLES XX ± XXX ± PARTS TO BE FREE FROM BURRS BREAK ALL EDGES .010	
	UNLESS OTHERWISE SPECIFIED— ALL MACH. SURFACES	
	MATERIAL	
	FINISH	
	SCALE	
	DRAWN D.F. CRAFT 5-8-72	
	CHECKED	
	ENGINEER R. GRUNER 9-20-71	
	APPROVED	
	FIRST USED ON 107-000111	
	SIZE D	CODE CCI
	DRAWING NUMBER 000152	REV. 05

DATA GENERAL CORPORATION
 SOUTHBORO, MASSACHUSETTS 01772
 TITLE
GENERAL POWER SUPPLY

THIS DRAWING AND SPECIFICATIONS HEREIN ARE THE PROPERTY OF DATA GENERAL CORPORATION AND SHALL NOT BE REPRODUCED OR COPIED OR USED IN WHOLE OR IN PART AS THE BASIS FOR MANUFACTURE OR SALE OF ITEMS WITHOUT WRITTEN PERMISSION.

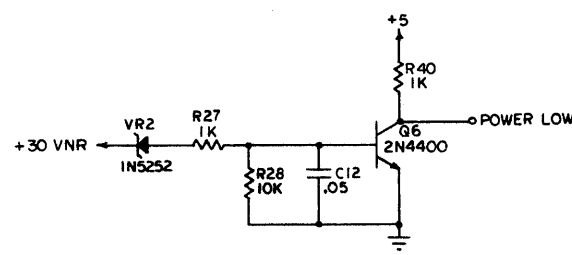
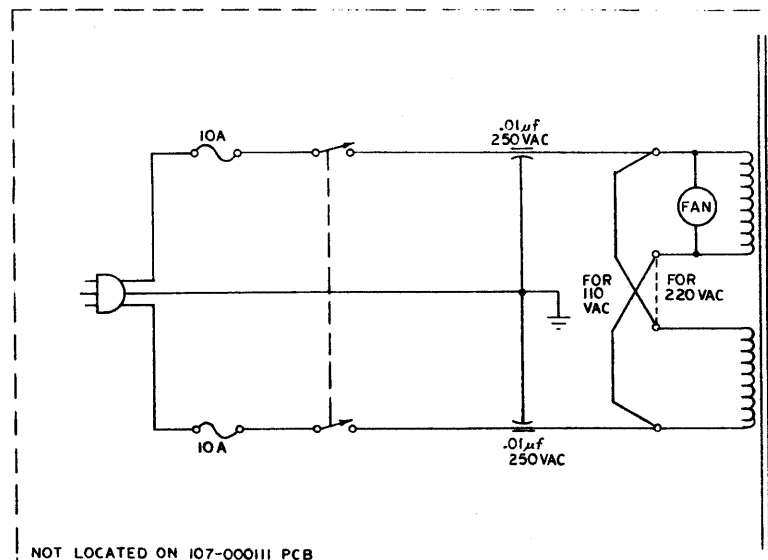
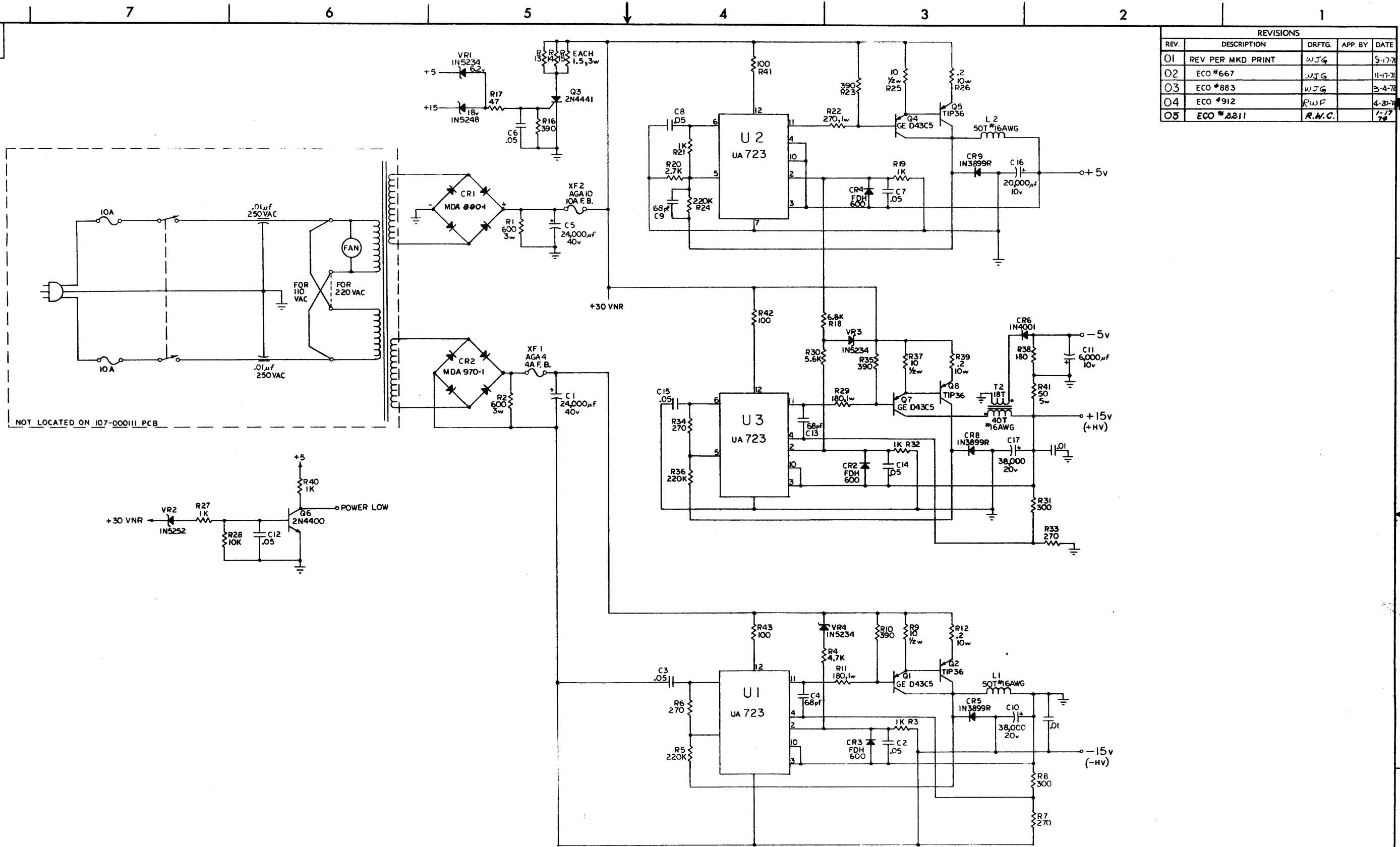
REVISIONS				
REV.	DESCRIPTION	DRFTG.	APP. BY	DATE
02	ECO # 668	R.N.K.		11-17-77
03	ECO # 735	R.N.K.		2-22-78
04	ECO # 811	R.N.K.		2-22-78
05	ECO # 913	R.N.K.		4-19-78
06	ECO # 1082	R.W.C.		12-1-78
07	ECO # 1760	R.W.C.		7-20-78
08	ECO # 1762	R.W.C.		7-20-78
09	ECO # 2161	R.W.C.		4-2-79



QTY.	DESCRIPTION	PART NO.
	DATA GENERAL CORPORATION	
	SOUTHBORO, MASSACHUSETTS 01772	
	TITLE	
	4047 LOGIC INTERFACE	
	DRAWN	
	CHECKED RAS 6/8/77	
	ENGINEER J. GOODBOUT 6/8/77	
	APPROVED	
	FIRST USED ON 4047 909	
	107-000107	
	SIZE	DRAWING NUMBER
	D 001	000143
	SCALE	REV.
		09

THIS DRAWING AND SPECIFICATIONS, HEREIN, ARE THE PROPERTY OF DATA GENERAL CORPORATION AND SHALL NOT BE REPRODUCED OR COPIED OR USED IN WHOLE OR IN PART AS THE BASIS FOR MANUFACTURE OR SALE OF ITEMS WITHOUT WRITTEN PERMISSION.

REVISIONS				
REV.	DESCRIPTION	DRFTG.	APP BY	DATE
01	REV PER MKD PRINT	WJG		9-17-71
02	ECO #667	WJG		11-17-71
03	ECO #883	WJG		3-4-72
04	ECO #912	RWF		4-20-72
05	ECO #2211	R.M.C.		1-17-74

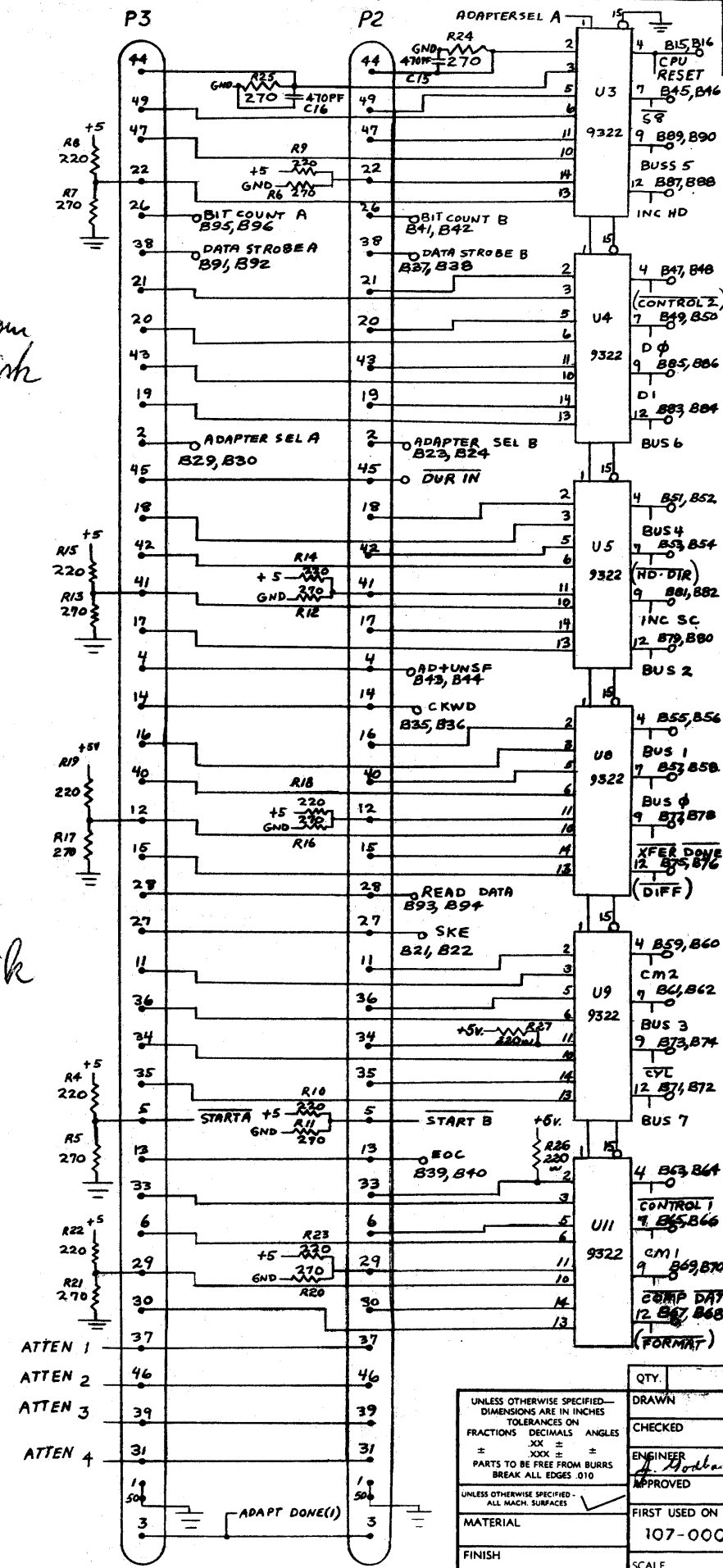
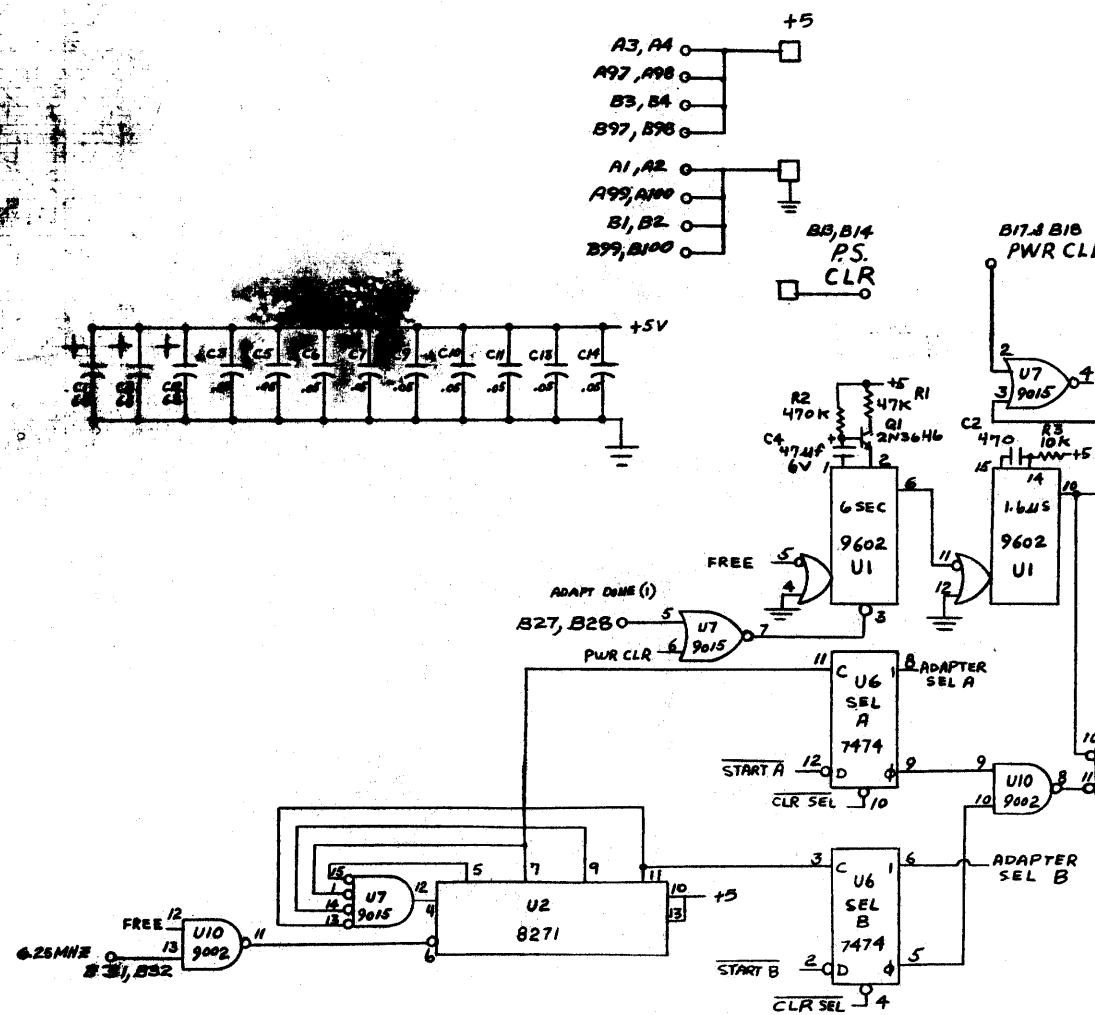
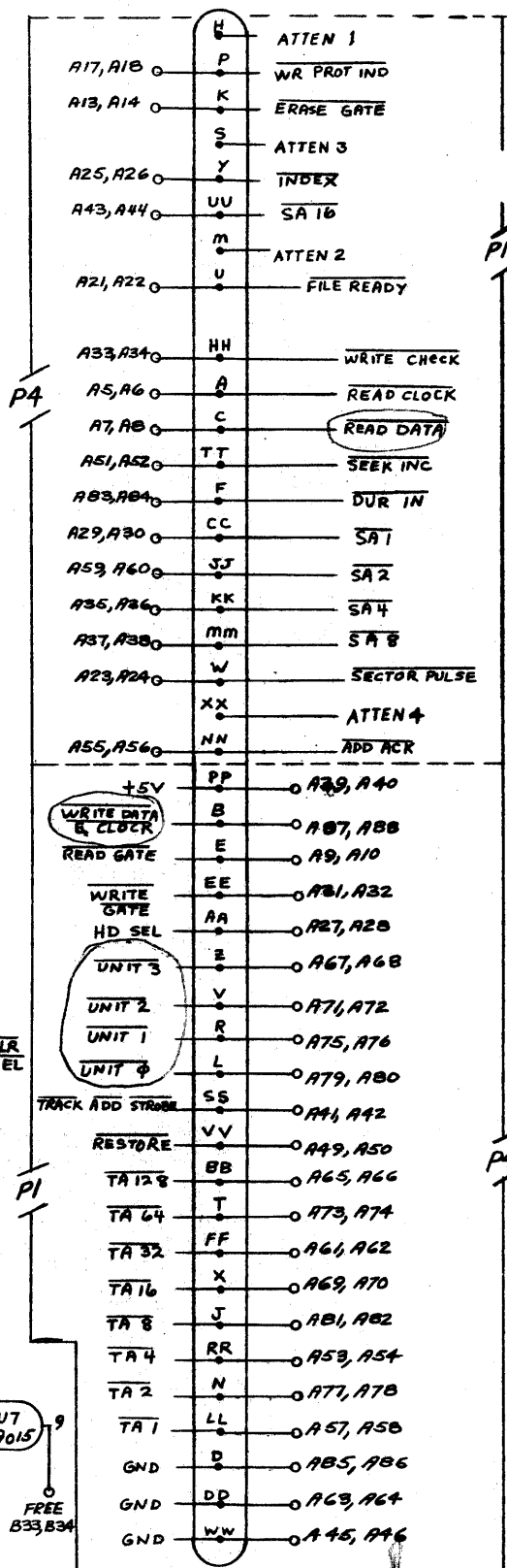


NOTES: UNLESS OTHERWISE INDICATED,
 1. ALL RESISTORS ARE 1/4 W, ±5%
 2. ALL CAPACITORS ARE IN MICROFARADS

N.M.C.		QTY.	DESCRIPTION	PART NO.
DRAWN	D.F. CRAFT	5-6-72	DATA GENERAL CORPORATION SOUTHBORO, MASSACHUSETTS 01772	
CHECKED				
ENGINEER	R. GRUNER	9-20-71	TITLE GENERAL POWER SUPPLY	
APPROVED				
UNLESS OTHERWISE SPECIFIED - ALL MATCH SURFACES		FIRST USED ON 107-000111		
MATERIAL				
FINISH				
SCALE	SIZE	CODE	DRAWING NUMBER	REV.
	D	CCI	000152	05

THIS DRAWING AND SPECIFICATIONS HEREIN ARE THE PROPERTY OF DATA GENERAL CORPORATION AND SHALL NOT BE REPRODUCED OR COPIED OR USED IN WHOLE OR IN PART AS THE BASIS FOR MANUFACTURE OR SALE OF ITEMS WITHOUT WRITTEN PERMISSION.

REVISIONS				
REV	DESCRIPTION	DRFTG	APP. BY	DATE
02	PER ECD 754	R.W.C.		4-19-72
03	ECO# 1762	R.W.C.		2-20-72

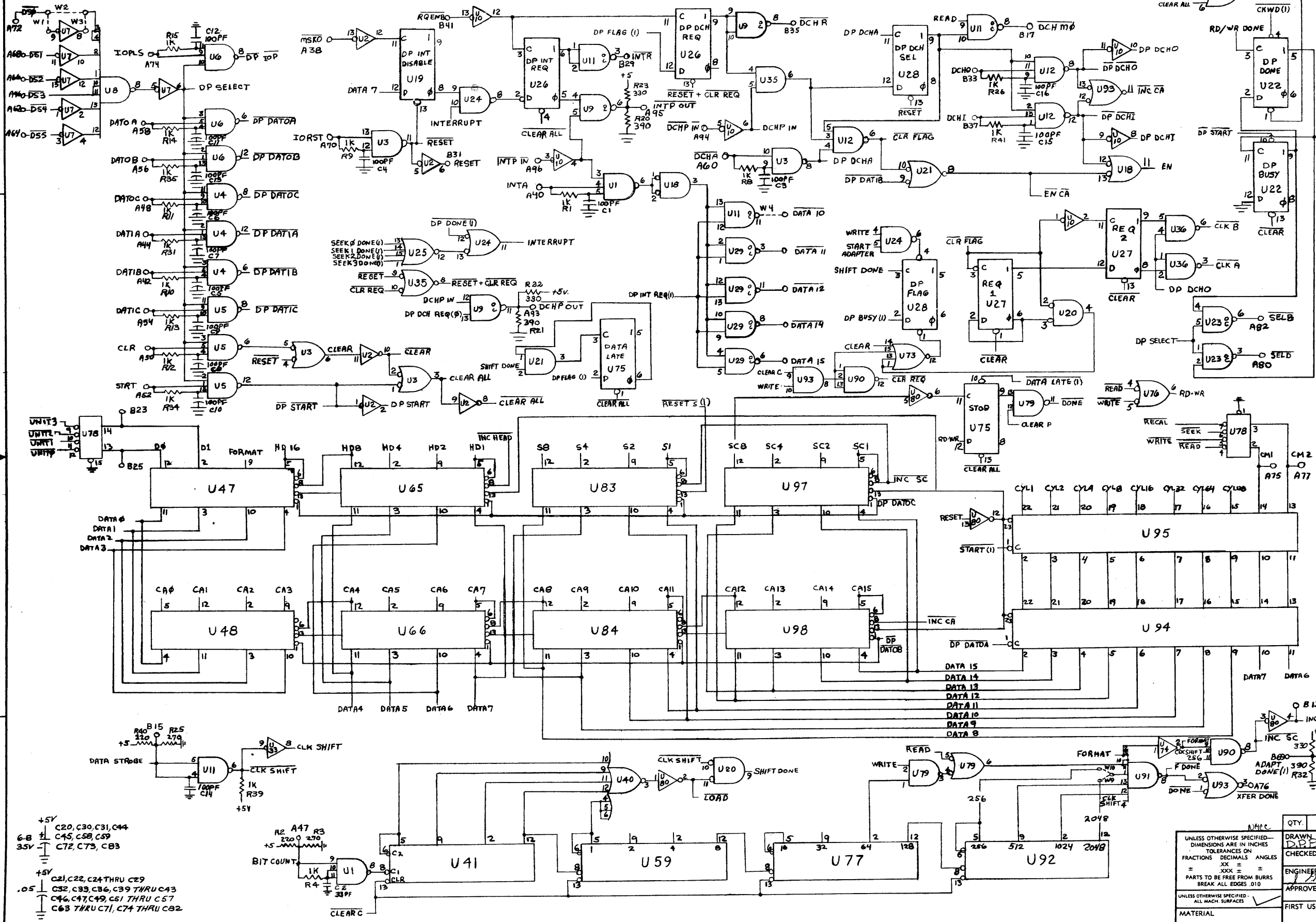


QTY.	DESCRIPTION	PART NO.
	DRAWN	
	CHECKED	
	ENGINEER	
	APPROVED	
	FIRST USED ON	1047, 4049
	MATERIAL	107-000106-01
	FINISH	
	SCALE	
	SIZE	001
	CODE	000142
	DRAWING NUMBER	000142
	REV	03

DATA GENERAL CORPORATION
SOUTHBORO, MASSACHUSETTS 01772
TITLE
4047 PLUG INTERFACE

THIS DRAWING AND SPECIFICATIONS, HEREIN, ARE THE PROPERTY OF DATA GENERAL CORPORATION AND SHALL NOT BE REPRODUCED OR COPIED OR USED IN WHOLE OR IN PART AS THE BASIS FOR MANUFACTURE OR SALE OF ITEMS WITHOUT WRITTEN PERMISSION.

REVISIONS				
REV.	DESCRIPTION	DRFTG.	APP BY	DATE
02	ECO # 501	M.D.C.	M.D.C.	10-15-71
03	ECO # 851	R.W.C.	R.W.C.	2-2-72
04	ECO # 915	R.W.C.	R.W.C.	4-11-72
05	ECO # 1017	M.D.C.	M.D.C.	6-1-72
06	ECO # 1118	M.D.C.	M.D.C.	9-1-72
07	ECO # 1695	R.W.C.	R.W.C.	7-2-73
08	ECO # 1760	R.W.C.	R.W.C.	7-20-73
09	ECO # 2678	G.W.M.	G.W.M.	7-2-74
10	ECO # 2748	G.W.M.	G.W.M.	7-2-74

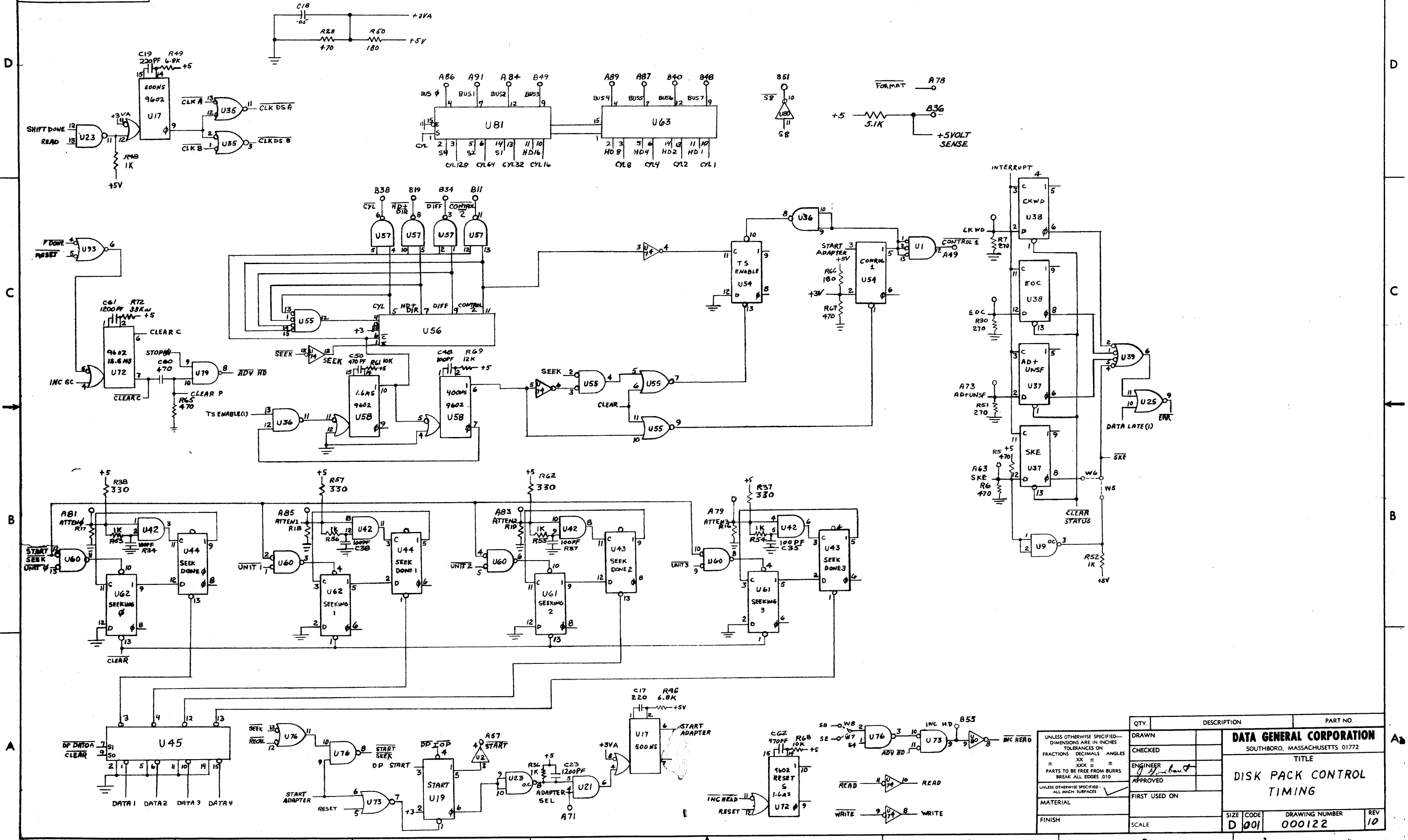


- +5V C20, C30, C31, C44
- 6.8 Ω C45, C58, C59
- 3.5V C72, C73, CB3
- +5V C21, C22, C24 THRU C29
- .05 C32, C33, C36, C39 THRU C43
- C46, C47, C49, C51 THRU C57
- C63 THRU C71, C74 THRU C82

UNLESS OTHERWISE SPECIFIED - DIMENSIONS ARE IN INCHES - TOLERANCES ON FRACTIONS DECIMALS ANGLES		DRAWN D.P.F. LINDIN		DATA GENERAL CORPORATION	
± .005	± .010	CHECKED		SOUTHBORO, MASSACHUSETTS 01772	
± .010	± .015	ENGINEER		TITLE	
± .015	± .020	APPROVED		DISK PACK CONTROL	
± .020	± .030	FIRST USED ON		I/O	
± .030	± .040	SCALE	4096	SIZE	D 001
± .040	± .050			CODE	000122
± .050	± .060			DRAWING NUMBER	REV 10
± .060	± .070				
± .070	± .080				
± .080	± .090				
± .090	± .100				

THIS DRAWING AND SPECIFICATIONS, HEREIN, ARE THE PROPERTY OF DATA GENERAL CORPORATION AND SHALL NOT BE REPRODUCED OR COPIED OR USED IN WHOLE OR IN PART AS THE BASIS FOR MANUFACTURE OR SALE OF ITEMS WITHOUT WRITTEN PERMISSION.

REVISIONS			
REV.	DESCRIPTION	DRFTG.	APP. BY DATE

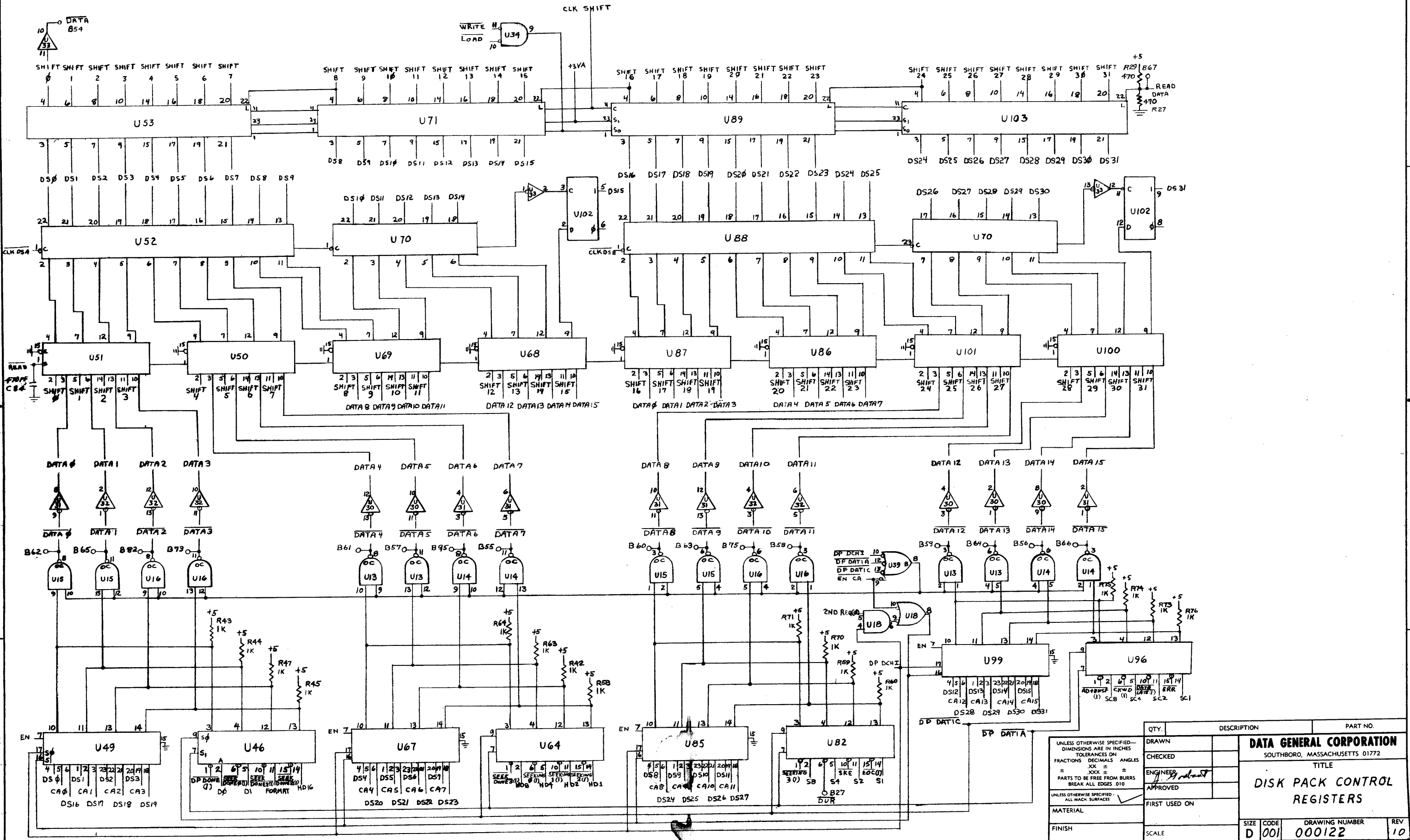


QTY.	DESCRIPTION	PART NO.

DRAWN		DATA GENERAL CORPORATION	
CHECKED		SOUTHBORO, MASSACHUSETTS 01772	
ENGINEER		TITLE	
APPROVED		DISK PACK CONTROL	
FIRST USED ON		TIMING	
MATERIAL		SIZE	
FINISH		CODE	
		DRAWING NUMBER	
		REV	
SCALE		D 001	
		000122	
		10	

THIS DRAWING AND SPECIFICATIONS, HEREIN, ARE THE PROPERTY OF DATA GENERAL CORPORATION AND SHALL NOT BE REPRODUCED OR COPIED OR USED IN WHOLE OR IN PART AS THE BASIS FOR MANUFACTURE OR SALE OF ITEMS WITHOUT WRITTEN PERMISSION.

REVISIONS				
REV.	DESCRIPTION	DRFTG.	APP BY	DATE



QTY.	DESCRIPTION	PART NO.

UNLESS OTHERWISE SPECIFIED— DIMENSIONS ARE IN INCHES TOLERANCES ON FRACTIONS DECIMALS ANGLES .XX .XXX .X PARTS TO BE FREE FROM BURRS BREAK ALL EDGES .010 UNLESS OTHERWISE SPECIFIED— ALL MACH. SURFACES	DRAWN CHECKED ENGINEER APPROVED FIRST USED ON MATERIAL FINISH	DATA GENERAL CORPORATION SOUTHBORO, MASSACHUSETTS 01772 TITLE DISK PACK CONTROL REGISTERS SIZE CODE D 001 DRAWING NUMBER 000122 REV 10
--	---	--