

DRAWING DIRECTORY

CUSTOMER PRINT SET INDEX

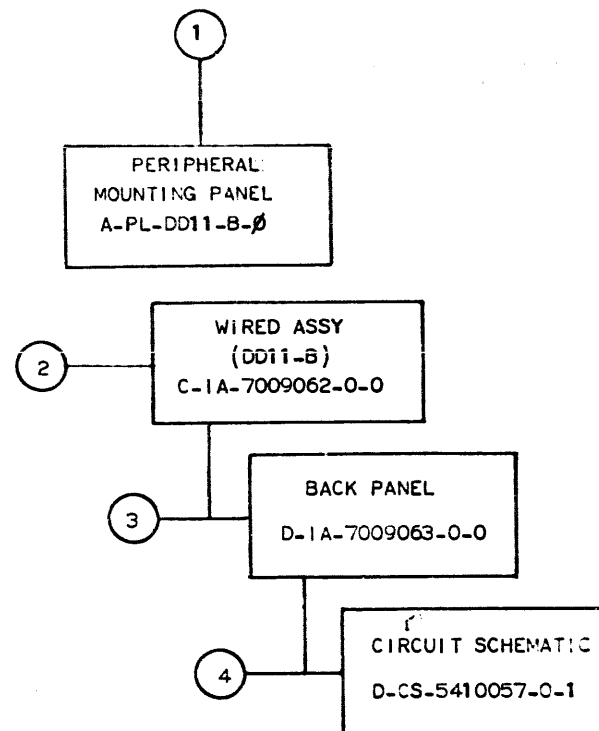
THIS IS PRINT SET

	SEQUENCE	SEQUENCE
DRAWING DIRECTORY	B-DD-DD11-B	
MODULE UTILIZATION	D-MU-DD11-B-1	
MODULE UTILIZATION P.L.	A-PL-DD11-B-1	
WIRED ASSY	C-1A-7009062-0-0 ✓	
ETCH/WIRE LIST	K-WL-DD11-B-2	
CIRCUIT SCHEMATIC	D-CS-5410057-0-1 ✓	
DD11-F/DD11-B	D-1A-7009563-0-0	
PERIPHERAL MOUNTING PANEL	A-PL-DD11-B-2	

WARNING:
THIS OPTION MUST BE USED ONLY WITH MOUNTING BOXES BUSSING POWER TO THE BACK PLANE VIA FASTON CONNECTORS. G772 POWER BUS MODULES MUST NOT BE PLUGGED INTO ANY SLOT IN THE DD11-B.

VARIATION	TITLE	PRINT SET TYPE					
		DD11-B					
DD11-B	PERIPHERAL MOUNTING PANEL	X					

REVISIONS					USED ON OPTION/MODEL	DRN. G. FLANDERS	DATE 8/22/78	TITLE PERIPHERAL MOUNTING PANEL	SIZE	CODE	NUMBER	REV
DATE	CHG. NO.	REV										
3/73	DD11B-1	A										
8/73	DD11B-2	B										
11/73	DD11B-3	C										
1-74	DD11B-4	D										
3-74	DD11B-5	E										



TITLE	SHEET	OF	SIZE	CODE	NUMBER	REV
PERIPHERAL MOUNTING PANEL	2	3	B	DD	DD11-B	E

This drawing and specifications, herein, are the property of Digital Equipment Corporation and shall not be reproduced or used in whole or in part as the basis for the manufacture or sale of items without written permission.

NOTES:
 1. WHEN ADDITIONAL DEVICE CONTROL IS READ REMOVE G727 MODULE AND REPLACE WITH READ MODULE.

- IF END OF BUS REPLACE M920 WITH M930.
- X IF LAST UNIT IN BASIC BOX REPLACE M920 WITH BC11A CABLE END WHEN EXPANDING TO PERIPHERAL BOX.
- ▲ IF FIRST UNIT IN EXPANDER BOX REPLACE M920 WITH BC11A CABLE END.

	OPTIONAL D11 CABLE						
	OPTIONAL D11 CABLE						
	OPTIONAL D11 CABLE						
	OPTIONAL D11 CABLE						
	OPTIONAL D11 CABLE						
	OPTIONAL D11 CABLE						

REV. 10-68

FIRST USED ON OPTION/MODEL
DDII-B

UNLESS OTHERWISE SPECIFIED	
TOLERANCES	
FRACTIONS	
DECIMALS	
ANGLES	
AS SHOWN	
UNLESS OTHERWISE SPECIFIED	
FINISH	
UNLESS OTHERWISE SPECIFIED	
PLATING	
UNLESS OTHERWISE SPECIFIED	
WELDING	
UNLESS OTHERWISE SPECIFIED	
WELDING	

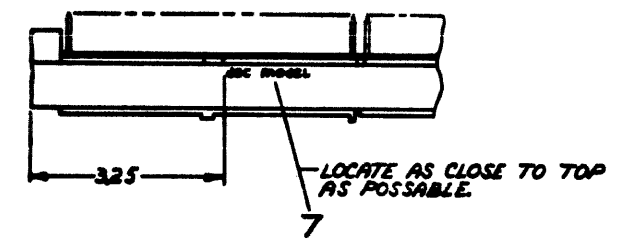
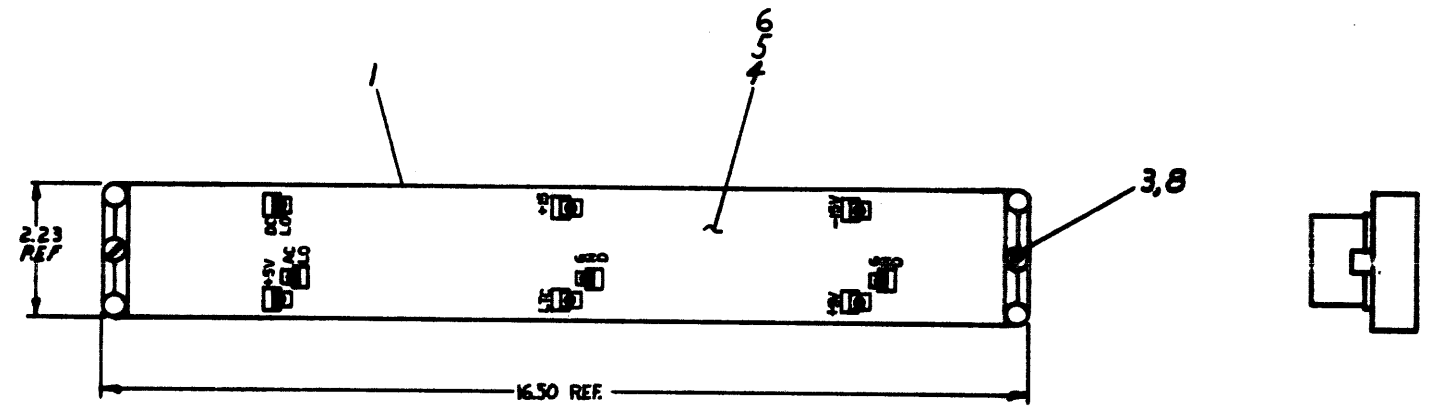
QTY.	DESCRIPTION	PART NO.
EQUIPMENT CORPORATION		
MODULE UTILIZATION		
DMU DDII-B-1		

DMU DDII-B-1

THIS DRAWING AND SPECIFICATIONS HEREIN ARE THE PROPERTY OF DIGITAL EQUIPMENT CORPORATION AND SHALL NOT BE REPRODUCED OR COPIED OR USED IN WHOLE OR IN PART AS THE BASIS FOR THE MANUFACTURE OR SALE OF ITEMS WITHOUT WRITTEN PERMISSION. COPYRIGHT © 1973, DIGITAL EQUIPMENT CORPORATION.

WIRE TABLE						WIRE TABLE FOR DDI1-EA							
ITEM NO.	SIGNAL NAME	FROM PIN	TO PIN	COLOR	AWG	REMARKS	ITEM NO.	SIGNAL NAME	FROM PIN	TO PIN	COLOR	AWG	REMARKS
4	+15V	B03N2	B03W2	ORN	24		5	BTL SR CLK	B02 N1	D02 S1	WHT	30	TWISTED PAIR
4	+15V	B03N2	C03U1	ORN	24			GND	B02C2	D02T1	BLK		
5	BUS INTR L	B04N1	D04L1	WHT	30	TWISTED PAIR		BTL SR CLK	B02E1	D02E1	WHT		
	GND	B04C2	D04T1	BLK	30			GND	B02C2	D02T1	BLK		
	BUS RC LO	B01F1	C01V1					BTL SR CLK	B02E1	D02E1	WHT		
	GND	B01C2	C01T1					GND	B02T1	D02E2	BLK		
	BUS DC LO	B01F2	C01N1					BTL SR CLK	B03H1	D03S1	WHT		
	GND	B02C2	C02T1					GND	B03C2	D03T1	BLK		
	BUS SSYN	B01U1	E01V1					BTL SR CLK	B03A1	D03A1	WHT		
	GND	B01T1	E01C2					GND	B03C2	D03T1	BLK		
	BUS INTR L	B04V1	E04T1					BTL SR CLK	B03A1	D03A1	WHT		
	GND	B04T1	E04C2				5	GND	B02T1	D02C2	BLK	30	TWISTED PAIR
5	BUS SACK L	F04R2	F04T2	WHT	30	TWISTED PAIR							
	GND	F04T1	F04T1	BLK	30								
8.9	GROUND	F02T1	SOLDER TERMINAL	BLK	24								

NOTES:
 1. USE YELLOW WIRE ITEM #6 FOR MACHINE WRAPPED & SEE HAND WIRE TABLE FOR HAND WRAPPED.
 2. MOUNT LOCKING TERMINAL ITEM #8, UNDER HEAD OF CAPTIVE SCREW.



QTY.	DESCRIPTION	PART NO.	ITEM NO.
	AIR #24 SOLID KYNAR, BLACK	9107688-00	9
1	LOCKING TERMINAL, SNARE PRO	9006766	8
1	DECAL LOGIC SERIAL NO.	A5574078460	7
AIR	#30 SOLID CONDUCTOR KYNAR	9105740-44	6
AIR	#30 SOLID CONDUCTOR KYNAR	9107675-09	5
AIR	#24 SOLID CONDUCTOR KYNAR	9107688-33	4
2	SCR CAPTIVE	9008167	3
REF	ETCH WIRE LIST (DDI1-B)	16-WL-DDI1-B-2	2
1	BACK PANEL	D29-7009063-0-0	1

FIRST USED ON OPTION MODEL		DDI1-B		PARTS LIST	
UNLESS OTHERWISE SPECIFIED DIMENSIONS IN INCHES	FLANDER	DATE	11-72	digital EQUIPMENT CORPORATION	
TOLERANCES	TEESCHNER	DATE	11-72	WIRE ASSY (DDI1-B)	
DECIMALS .005	CUT LAU	DATE	11-72	REV. C	
ANGLES .02	WASTON	DATE	11-72	DIA 7009062-0-0	
.1	DE ROME	DATE	11-72	C	
REMOVE BURRS AND BREAK SHARP CORNERS SURFACE QUALITY 1	NEXT HIGHER ASSY.		A-PL-DDI1-B -0		
MATERIAL	SCALE		1/8"		
FINISH	DIA		7009062-0-0		

REV. NO.	DATE	BY
1	11-72	WASTON
2	11-72	WASTON
3	11-72	WASTON
4	11-72	WASTON
5	11-72	WASTON
6	11-72	WASTON
7	11-72	WASTON
8	11-72	WASTON
9	11-72	WASTON

DIA 7009062-0-0 C

This drawing and specifications, herein, are the property of Digital Equipment Corporation and shall not be reproduced or copied or used in whole or in part as the basis for the manufacture or sale of items without written permission.

SIZE CODE K WL
 NUMBER DDII-B-2

REVISIONS	
CHK	CHANGE NO.
82	DDIB-00002
Scharfen 8-6-73	
CONDON	
<i>[Signature]</i>	
83	DDIB-00003
Scharfen 11-27-73	
CONDON	
<i>[Signature]</i>	
84	DDIB-00005
Scharfen 9-22-74	
CONDON	
<i>[Signature]</i>	

FIRST USED ON OPTION MODEL	QTY.	DESCRIPTION	PART NO.	ITEM NO.
DDII-B				
PARTS LIST				
DRN.	<i>[Signature]</i>	DATE	9/23/72	
CHK'D.	C. Teschner	DATE	8/25/72	
ENG.	<i>[Signature]</i>	DATE	9/15/72	
PROJ. ENG.	<i>[Signature]</i>	DATE	9/15/72	
PRG'D.	<i>[Signature]</i>	DATE	9/22/72	
NEXT HIGHER ASSEMBLY		C-IA-7009062-0-0		
SCALE	—		SIZE CODE	K WL
SHEET	1	OF	1	DIST.
		NUMBER	DDII-B-2	REV.
				C

digital EQUIPMENT CORPORATION
 MAYNARD, MASSACHUSETTS

TITLE
 ETCH/WIRE LIST
 (DDII-B)

4

3

2

1

B

B

A

A

DD11B,C
RUN NAME

HND288.V22(22) 11/06/73
A/P PIN ORDER HAY - Q
NAME PIN ORDER

Q DRAW RV PG Y X Z

REMARKS

6-APR-74
LENGTH

4:16
EXCEPTIONS

PAGE 2
RUN
NUMBER

-15V
-15V
-15V
-15V
-15V
-15V
-15V
-15V
-15V
-15V
-15V
-15V
-15V
-15V
-15V
-15V
-15V
-15V
-15V
-15V
-15V

B02B2
B03B2
C03B2
C04B2
C02B2
C01B2
D01B2
D02B2
D03B2
D04B2
E04B2
E03B2
E02B2
E01B2
F01B2
F02B2
F03B2
F04B2
1

1-01 * H
1-02 * H
1-03 * H
1-04 * H
1-05 * H
1-06 * H
1-07 * H
1-08 * H
1-09 * H
1-10 * H
1-11 * H
1-12 * H
1-13 * H
1-14 * H
1-15 * H
1-16 * H
1-17 * H
1-18 * H
1

2
1
2
1
2
1
2
1
2
1
2
1
2
1
2
1
2
1
2
1
1

P
P
P
P
P
P
P
P
P
P
P
P
P
P
P
P
P
P
P
P
P

3
3
3
3
3
3
3
3
3
3
3
3
3
3
3
3
3
3
3
3
3
3

55-6/8

A 1V
A 1V
A 1V

D01M1
E01M1
E MI

1-01 *
1-02 *
1

1
1
1

H
H
E MI

4
4
4

5-2/8

A INT A
A INT A
A INT A

D01M1
F01U1

1-01 * 1
1-02 *
1

1
1
1

H
H

5
5
5

4-0

8-5/8

A INT B
A INT B
A INT B

C01J1
F01K2

1-01 *
1-02 *
1

1
1
1

H
H

6
6
6

10-4/8

A INT ENB A
A INT ENB A
A INT ENB A

D01M1
F01V1

1-01 *
1-02 *
1

1
1
1

H
H

7
7
7

8-4/8

A INT ENB B
A INT ENB B
A INT ENB B

C01L1
F01H2

1-01 *
1-02 *
1

1
1
1

H
H

8
8
8

10-0/8

A OUT HIGH
A OUT HIGH
A OUT HIGH

D01K1
E01M2

1-01 *
1-02 *
1

1
1
1

H
H

9
9
9

5-2/8

A OUT LOW
A OUT LOW
A OUT LOW

D01D1
E01N1

1-01 *
1-02 *
1

1
1
1

H
H

10
10
10

5-6/8

DD11B,C
RUN NAME

HND288.V22(22) 11/06/73
A/P PIN ORDER HAY - Q
NAME PIN ORDER

Q DRAW RV PG Y X Z

REMARKS

6-APR-74
LENGTH

4:16
EXCEPTIONS

PAGE 3
RUN
NUMBER

A SELECT 0
A SELECT 0
A SELECT 0

E01F1
E01S2

1-01 *
1-02 *
1

1
1
1

H
H

11
11
11

6-0/8

A SELECT 2
A SELECT 2
A SELECT 2

D01J1
E01I2

1-01 *
1-02 *
1

1
1
1

H
H

12
12
12

6-0/8

A SELECT 4
A SELECT 4
A SELECT 4

D01E1
E01K2

1-01 *
1-02 *
1

1
1
1

H
H

13
13
13

6-2/8

A SELECT 6
A SELECT 6
A SELECT 6

D01C1
E01S1

1-01 *
1-02 *
1

1
1
1

H
H

14
14
14

6-2/8

A SSYN INHIBIT
A SSYN INHIBIT
A SSYN INHIBIT

D01V1
E01B1

1-01 *
1-02 *
1

1
1
1

L
L

15
15
15

2-6/8

A02C1
A02C1
A02C1

A02C1
B02L1

1-01 * 1
1-02 *
1

1
1
1

H
H

16
16
16

2-7

6-3/8

A02D1
A02D1
A02D1

A02D1
B02M1

1-01 * 1
1-02 *
1

1
1
1

H
H

17
17
17

2-7

6-3/8

A02H1
A02H1
A02H1

A02H1
B02S1

1-01 * 1
1-02 *
1

1
1
1

H
H

18
18
18

2-7

6-3/8

A02H2
A02H2
A02H2

A02H2
B02J1

1-01 *
1-02 *
1

1
1
1

H
H

19
19
19

3-0

6-5/8

A02J1
A02J1
A02J1

A02J1
B02N1

1-01 * 1
1-02 *
1

1
1
1

H
H

20
20
20

2-5

5-7/8

A02J2
A02J2
A02J2

A02J2
B02F1

1-01 * 1
1-02 *
1

1
1
1

H
H

21
21
21

2-3

5-3/8

A02N1
A02N1
A02N1

A02N1
B02P1

1-01 * 1
1-02 *
1

1
1
1

H
H

22
22
22

2-4

5-5/8

EQUIPMENT CORPORATION

EQUIPMENT CORPORATION

DD118.C RUN NAME	HND288.V22(22) 11/06/73				Q	DRAW	RV	PG	Y	X	Z	REMARKS	6-APR-74	4:16	PAGE 4
	A/P	PIN NAME	ORDER PIN	BAY - ORDER									LENGTH	EXCEPTIONS	RUN NUMBER
A02N2		A02N2		1-01 *							1				23
A02N2		B02E2		1-02 *											23
A02N2				1									4-2/8		23
A03C1		A03C1		1-01 *							1				24
A03C1		B03L1		1-02 *											24
A03C1				1									6-0/8		24
A03D1		A03D1		1-01 *							1				25
A03D1		B03M1		1-02 *											25
A03D1				1									6-0/8		25
A03H1		A03H1		1-01 *							1				26
A03H1		B03S1		1-02 *											26
A03H1				1									6-0/8		26
A03H2		A03H2		1-01 *							1				27
A03H2		B03J1		1-02 *											27
A03H2				1									5-2/8		27
A03J1		A03J1		1-01 *							1				28
A03J1		B03N1		1-02 *											28
A03J1				1									5-4/8		28
A03J2		A03J2		1-01 *							1				29
A03J2		B03F1		1-02 *											29
A03J2				1									5-0/8		29
A03N1		A03N1		1-01 *							1				30
A03N1		B03P1		1-02 *											30
A03N1				1									5-2/8		30
A03N2		A03N2		1-01 *							1				31
A03N2		B03E2		1-02 *											31
A03N2				1									4-2/8		31
ABG IN	H	D01U2		1-01 *							1				32
ABG IN	H	F01B1		1-02 *											32
ABG IN				1									5-6/8		32
ABG OUT	H	D01V2		1-01 *							1		2-5		33
ABG OUT	H	F01A1		1-02 *											33
ABG OUT				1									5-7/8		33

DD118.C RUN NAME	HND288.V22(22) 11/06/73				Q	DRAW	RV	PG	Y	X	Z	REMARKS	6-APR-74	4:16	PAGE 5
	A/P	PIN NAME	ORDER PIN	BAY - ORDER									LENGTH	EXCEPTIONS	RUN NUMBER
ABR OUT	L	D01J2		1-01 *	2						2		3-7		34
ABR OUT	L	F01P1		1-02 *							1				34
ABR OUT	L	F01U2		1-03 *											34
ABR OUT				1									11-3/8		34
B EIA CARRIER	H	A02P2		1-01 *							1				35
B EIA CARRIER	H	B02H2		1-02 *											35
B EIA CARRIER				1									4-2/8		35
B EIA CLR TO SEND	H	A02M2		1-01 *							1				36
B EIA CLR TO SEND	H	B02K2		1-02 *											36
B EIA CLR TO SEND				1									4-6/8		36
B EIA DATA TERM RDY	H	A02H2		1-01 *							1				37
B EIA DATA TERM RDY	H	B02R2		1-02 *											37
B EIA DATA TERM RDY				1									5-0/8		37
B EIA RCV DATA	H	A02F2		1-01 *							1				38
B EIA RCV DATA	H	B02J2		1-02 *											38
B EIA RCV DATA				1									5-2/8		38
B EIA REQ TO SEND	H	A02L2		1-01 *							1				39
B EIA REQ TO SEND	H	B02T2		1-02 *											39
B EIA REQ TO SEND				1									5-6/8		39
B EIA RING	H	A02K2		1-01 *							1				40
B EIA RING	H	B02M2		1-02 *											40
B EIA RING				1									5-2/8		40
B EIA SEC RCV DATA	H	A02F1		1-01 *							1				41
B EIA SEC RCV DATA	H	B02L2		1-02 *											41
B EIA SEC RCV DATA				1									5-6/8		41
B EIA SEC TRANS DATA	H	A02E1		1-01 *	1						1		3-2		42
B EIA SEC TRANS DATA	H	B02U1		1-02 *											42
B EIA SEC TRANS DATA				1									7-1/8		42
B EIA TRANSMIT DATA	H	A02E2		1-01 *	1						1		3-2		43
B EIA TRANSMIT DATA	H	B02V1		1-02 *											43
B EIA TRANSMIT DATA				1									7-1/8		43
B IN/B SEL RCV DATA	H	B02E1		1-01 *	2						2		3-6		44
B IN/B SEL RCV DATA	H	D02H1		1-02 *							1				44
B IN/B SEL RCV DATA	H	E02M1		1-03 *											44
B IN/B SEL RCV DATA				1									13-3/8		44

DD11B.C RUN NAME	A/P	PIN NAME	ORDER PIN	BAY - ORDER	Q	DRAW	RV	PG	Y	X	Z	REMARKS	6-APR-74 LENGTH	4:16 EXCEPTIONS	PAGE 6 RUN NUMBER
B INT A	H	D02N1		1-01 *							1				45
B INT A	H	F02U1		1-02 *											45
B INT A				1									8-2/8		45
B INT B	H	C02J1		1-01 *							1				46
B INT B	H	F02K2		1-02 *									10-4/8		46
B INT B				1											46
B INT ENB A	H	D02M1		1-01 *	1						1		4-0		47
B INT ENB A	H	F02V1		1-02 *											47
B INT ENB A				1									8-5/8		47
B INT ENB B	H	C02L1		1-01 *							1				48
B INT ENB B	H	F02H2		1-02 *											48
B INT ENB B				1									10-0/8		48
B OUT HIGH	H	D02K1		1-01 *							1				49
B OUT HIGH	H	F02M2		1-02 *											49
B OUT HIGH				1									5-2/8		49
B OUT LOZ/B CLR TO SEND	H	H02F2		1-01 *	2						2		3-5		50
B OUT LOZ/B CLR TO SEND	H	D02O1		1-02 *							1				50
B OUT LOZ/B CLR TO SEND	H	F02N1		1-03 *											50
B OUT LOZ/B CLR TO SEND				1									13-5/8		50
B SEL 0/8 RING	H	H02C1		1-01 *	2						2		3-6		51
B SEL 0/8 RING	H	D02F1		1-02 *							1				51
B SEL 0/8 RING	H	F02S2		1-03 *											51
B SEL 0/8 RING				1									14-1/8		51
B SEL 4/8 CARRIER	H	H02B1		1-01 *	2						2		3-7		52
B SEL 4/8 CARRIER	H	D02E1		1-02 *							1				52
B SEL 4/8 CARRIER	H	F02R2		1-03 *											52
B SEL 4/8 CARRIER				1									14-5/8		52
B SEL 6/XMIT DATA	H	H02V2		1-01 *	2						2		2-6		53
B SEL 6/XMIT DATA	H	D02C1		1-02 *							1				53
B SEL 6/XMIT DATA	H	F02S1		1-03 *											53
B SEL 6/XMIT DATA				1									12-3/8		53
B SELECT 2	H	D02J1		1-01 *							1				54
B SELECT 2	H	F02I2		1-02 *											54
B SELECT 2				1									6-0/8		54
B SSM INHIBIT	L	D02V1		1-01 *							1				55
B SSM INHIBIT	L	F02B1		1-02 *											55
B SSM INHIBIT				1									2-6/8		55

DD11B.C RUN NAME	A/P	PIN NAME	ORDER PIN	BAY - ORDER	Q	DRAW	RV	PG	Y	X	Z	REMARKS	6-APR-74 LENGTH	4:16 EXCEPTIONS	PAGE 7 RUN NUMBER
B TTL DATA SET RDY	H	B02D2		1-01 *	1						1				56
B TTL DATA SET RDY	H	D02P1		1-02 *											56
B TTL DATA SET RDY				1									9-0/8		56
B TTL DATA TERM RDY	H	B02P2		1-01 *							1				57
B TTL DATA TERM RDY	H	C02F1		1-02 *											57
B TTL DATA TERM RDY				1									4-0/8		57
B TTL EXT SER CLK XMIT	H	B02R1		1-01 *	H						1	TWISTED PAIR		HAND WIRE	58
B TTL EXT SER CLK XMIT	H	D02B1		1-02 *								TWISTED PAIR		TO HERE	58
B TTL EXT SER CLK XMIT				1									6-0/8		58
B TTL RCV DATA	H	B02U1		1-01 *	1						1		3-4		59
B TTL RCV DATA	H	D02A1		1-02 *											59
B TTL RCV DATA				1									7-5/8		59
B TTL REQ TO SEND	H	B02S2		1-01 *							1				60
B TTL REQ TO SEND	H	C02M1		1-02 *											60
B TTL REQ TO SEND				1									4-4/8		60
B TTL SEC TRANS DATA	H	B02U2		1-01 *							1				61
B TTL SEC TRANS DATA	H	C02K1		1-02 *											61
B TTL SEC TRANS DATA				1									4-0/8		61
B TTL SERIAL CLK RCV	H	B02H1		1-01 *	H						1	TWISTED PAIR		HAND WIRE	62
B TTL SERIAL CLK RCV	H	D02S1		1-02 *								TWISTED PAIR		TO HERE	62
B TTL SERIAL CLK RCV				1									8-4/8		62
B TTL SERIAL CLK XMIT	H	B02K1		1-01 *	H						1	TWISTED PAIR		HAND WIRE	63
B TTL SERIAL CLK XMIT	H	D02R1		1-02 *								TWISTED PAIR		TO HERE	63
B TTL SERIAL CLK XMIT				1									8-2/8		63
BBG IN	H	D02U2		1-01 *							1				64
BBG IN	H	F02B1		1-02 *											64
BBG IN				1									5-6/8		64
BBG OUT	H	D02V2		1-01 *	1						1		2-5		65
BBG OUT	H	F02A1		1-02 *											65
BBG OUT				1									5-7/8		65
BBR OUT	L	D02J2		1-01 *							1				66
BBR OUT	L	F02P1		1-02 *							2				66
BBR OUT	L	F02U2		1-03 *											66
BBR OUT				1									11-4/8		66

DD118.C RUN NAME	HND288.V22(22) 11/06/73										6-APR-74	4:16	PAGE 8		
	A/P	PIN NAME	ORDER PIN	BAY - ORDER	Q	DRAW	RV	PG	Y	X	Z	REMARKS	LENGTH	EXCEPTIONS	RUN NUMBER
BUS A00	L	B01H2		1-01 *	H						2		P	HAND WIRE	67
BUS A00	L	B04H2		1-02 *							1			TO HERE	67
BUS A00	L	E04H2		1-03 *	H						2		P	HAND WIRE	67
BUS A00	L	E03H2		1-04 *	H						1		P	HAND WIRE	67
BUS A00	L	E02H2		1-05 *	H						2		P	HAND WIRE	67
BUS A00	L	E01H2		1-06 *	H						1		P	H TO WHERE	67
BUS A00				1										22-0/8	67
BUS A01	L	B01H1	B04H1	1-01 *	1						1				68
BUS A01	L	B04H1		1-02 *							2			4-7	68
BUS A01	L	F04H1		1-03 *							1				68
BUS A01	L	E03H1		1-04 *							2				68
BUS A01	L	E02H1		1-05 *							1				68
BUS A01	L	E01H1		1-06 *							1				68
BUS A01				1										22-3/8	68
BUS A02	L	B01J2		1-01 *	H						2		P	HAND WIRE	69
BUS A02	L	B04J2		1-02 *							1			TO HERE	69
BUS A02	L	E01F1		1-03 *							2				69
BUS A02	L	E02F1		1-04 *							1				69
BUS A02	L	E03F1		1-05 *							2				69
BUS A02	L	E04F1		1-06 *							1				69
BUS A02				1										22-4/8	69
BUS A03	L	B01J1		1-01 *							2				70
BUS A03	L	B04J1		1-02 *							1				70
BUS A03	L	E04V2		1-03 *	H						2		P	HAND WIRE	70
BUS A03	L	E03V2		1-04 *	H						1		P	HAND WIRE	70
BUS A03	L	E02V2		1-05 *	H						2		P	HAND WIRE	70
BUS A03	L	E01V2		1-06 *	H						1		P	H TO WHERE	70
BUS A03				1										23-4/8	70
BUS A04	L	H01K2		1-01 *	H						2		P	HAND WIRE	71
BUS A04	L	H04K2		1-02 *							1			TO HERE	71
BUS A04	L	E01U2		1-03 *							2				71
BUS A04	L	E02U2		1-04 *							1				71
BUS A04	L	E03U2		1-05 *							2				71
BUS A04	L	E04U2		1-06 *							1				71
BUS A04				1										23-6/8	71
BUS A05	L	H01K1		1-01 *							2				72
BUS A05	L	H04K1		1-02 *							1				72
BUS A05	L	E04V1		1-03 *	H						2		P	HAND WIRE	72
BUS A05	L	E03V1		1-04 *	H						1		P	HAND WIRE	72
BUS A05	L	E02V1		1-05 *	H						2		P	HAND WIRE	72
BUS A05	L	E01V1		1-06 *	H						1		P	H TO WHERE	72
BUS A05				1										23-2/8	72

DD118.C RUN NAME	HND288.V22(22) 11/06/73										6-APR-74	4:16	PAGE 9			
	A/P	PIN NAME	ORDER PIN	BAY - ORDER	Q	DRAW	RV	PG	Y	X	Z	REMARKS	LENGTH	EXCEPTIONS	RUN NUMBER	
BUS A06	L	B01L2	B04L2	1-01 *	H						2		P	HAND WIRE	73	
BUS A06	L	B04L2		1-02 *							1			5-3	TO HERE	73
BUS A06	L	E04U1		1-03 *	H						2		P	HAND WIRE	73	
BUS A06	L	E03U1		1-04 *	H						1		P	HAND WIRE	73	
BUS A06	L	E02U1		1-05 *	H						2		P	HAND WIRE	73	
BUS A06	L	E01U1		1-06 *	H						1		P	H TO WHERE	73	
BUS A06				1										23-3/8	73	
BUS A07	L	B01L1		1-01 *							2				74	
BUS A07	L	B04L1		1-02 *							1				74	
BUS A07	L	E04P2		1-03 *	H						2		P	HAND WIRE	74	
BUS A07	L	E03P2		1-04 *	H						1		P	HAND WIRE	74	
BUS A07	L	E02P2		1-05 *	H						2		P	HAND WIRE	74	
BUS A07	L	E01P2		1-06 *	H						1		P	H TO WHERE	74	
BUS A07				1										22-4/8	74	
BUS A08	L	B01M2		1-01 *	H						2		P	HAND WIRE	75	
BUS A08	L	B04M2		1-02 *							1			TO HERE	75	
BUS A08	L	E04N2		1-03 *	H						2		P	HAND WIRE	75	
BUS A08	L	E03N2		1-04 *	H						1		P	HAND WIRE	75	
BUS A08	L	E02N2		1-05 *	H						2		P	HAND WIRE	75	
BUS A08	L	E01N2		1-06 *	H						1		P	H TO WHERE	75	
BUS A08				1										22-2/8	75	
BUS A09	L	B01M1		1-01 *							2				76	
BUS A09	L	B04M1		1-02 *							1				76	
BUS A09	L	E04R1		1-03 *	H						2		P	HAND WIRE	76	
BUS A09	L	E03R1		1-04 *	H						1		P	HAND WIRE	76	
BUS A09	L	E02R1		1-05 *	H						2		P	HAND WIRE	76	
BUS A09	L	E01R1		1-06 *	H						1		P	H TO WHERE	76	
BUS A09				1										22-4/8	76	
BUS A10	L	B01N2	B04N2	1-01 *	H						2		P	HAND WIRE	77	
BUS A10	L	B04N2		1-02 *							1			5-0	TO HERE	77
BUS A10	L	E04P1		1-03 *	H						2		P	HAND WIRE	77	
BUS A10	L	E03P1		1-04 *	H						1		P	HAND WIRE	77	
BUS A10	L	E02P1		1-05 *	H						2		P	HAND WIRE	77	
BUS A10	L	E01P1		1-06 *	H						1		P	H TO WHERE	77	
BUS A10				1										22-5/8	77	
BUS A11	L	B01N1		1-01 *							2				78	
BUS A11	L	B04N1		1-02 *							1				78	
BUS A11	L	E04L1		1-03 *	H						2		P	HAND WIRE	78	
BUS A11	L	E03L1		1-04 *	H						1		P	HAND WIRE	78	
BUS A11	L	E02L1		1-05 *	H						2		P	HAND WIRE	78	
BUS A11	L	E01L1		1-06 *	H						1		P	H TO WHERE	78	
BUS A11				1										21-6/8	78	

DD118,C RUN NAME	A/P	PIN NAME	ORDER PIN	BAY - ORDER	U	DRW	RV	PG	Y	X	Z	REMARKS	6-APR-74 LENGTH	4:16 EXCEPTIONS	PAGE 10 RUN NUMBER
BUS A12	L	B01P2	H04P2	1-01 *	H						2		P		79
BUS A12	L	B04P2		1-02 *							1		4-2	HAND WIRE TU HERE	79
BUS A12	L	E04C1		1-03 *	H						2		P	HAND WIRE	79
BUS A12	L	E03C1		1-04 *	H						1		P	HAND WIRE	79
BUS A12	L	E02C1		1-05 *	H						2		P	HAND WIRE	79
BUS A12	L	E01C1		1-06 *	H						1		P	H TO WHERE	79
BUS A12				1									21-1/8		79
BUS A13	L	B01P1		1-01 *							2				80
BUS A13	L	H04P1		1-02 *							1				80
BUS A13	L	E04K2		1-03 *	H						2		P	HAND WIRE	80
BUS A13	L	E03K2		1-04 *	H						1		P	HAND WIRE	80
BUS A13	L	E02K2		1-05 *	H						2		P	HAND WIRE	80
BUS A13	L	E01K2		1-06 *	H						1		P	H TO WHERE	80
BUS A13				1									21-6/8		80
BUS A14	L	H01K2		1-01 *	H						2		P	HAND WIRE	81
BUS A14	L	H04K2		1-02 *							1			TU HERE	81
BUS A14	L	E01K1		1-03 *							2				81
BUS A14	L	E02K1		1-04 *							1				81
BUS A14	L	E03K1		1-05 *							2				81
BUS A14	L	E04K1		1-06 *							1				81
BUS A14				1									22-2/8		81
BUS A15	L	B01R1		1-01 *							2				82
BUS A15	L	H04R1		1-02 *							1				82
BUS A15	L	E04D2		1-03 *	H						2		P	HAND WIRE	82
BUS A15	L	E03D2		1-04 *	H						1		P	HAND WIRE	82
BUS A15	L	E02D2		1-05 *	H						2		P	HAND WIRE	82
BUS A15	L	E01D2		1-06 *	H						1		P	H TO WHERE	82
BUS A15				1									21-0/8		82
BUS A16	L	H01S2		1-01 *	H						2		P	HAND WIRE	83
BUS A16	L	H04S2		1-02 *							1			TU HERE	83
BUS A16	L	E01E2		1-03 *							2				83
BUS A16	L	E02E2		1-04 *							1				83
BUS A16	L	E03E2		1-05 *							2				83
BUS A16	L	E04E2		1-06 *							1				83
BUS A16				1									21-4/8		83
BUS A17	L	B01S1		1-01 *							2				84
BUS A17	L	H04S1		1-02 *							1				84
BUS A17	L	E04D1		1-03 *	H						2		P	HAND WIRE	84
BUS A17	L	E03D1		1-04 *	H						1		P	HAND WIRE	84
BUS A17	L	E02D1		1-05 *	H						2		P	HAND WIRE	84
BUS A17	L	E01D1		1-06 *	H						1		P	H TO WHERE	84
BUS A17				1									20-6/8		84

DD118,C RUN NAME	A/P	PIN NAME	ORDER PIN	BAY - ORDER	U	DRW	RV	PG	Y	X	Z	REMARKS	6-APR-74 LENGTH	4:16 EXCEPTIONS	PAGE 11 RUN NUMBER
BUS AC LO	L	B04F1		1-01 *	1						2				85
BUS AC LO	L	B01F1		1-02 *	H						1			HAND WIRE	85
BUS AC LO	L	C01V1		1-03 *							2			TU HERE	85
BUS AC LO	L	C02V1		1-04 *							1				85
BUS AC LO	L	C03V1		1-05 *							2				85
BUS AC LO	L	C04V1		1-06 *							1				85
BUS AC LO				1									18-2/8		85
BUS BBSY	L	A04P2		1-01 *	H						2		P	HAND WIRE	86
BUS BBSY	L	A01P2		1-02 *							1			TU HERE	86
BUS BBSY	L	F01D1		1-03 *	H						2		P	HAND WIRE	86
BUS BBSY	L	F02D1		1-04 *	H						1		P	HAND WIRE	86
BUS BBSY	L	F03D1		1-05 *	H						2		P	HAND WIRE	86
BUS BBSY	L	F04D1		1-06 *	H						1		P	H TO WHERE	86
BUS BBSY				1									26-4/8		86
BUS BG4S0	H	B01E2		1-01 *							1	WIRE-BG4 IN			87
BUS BG4S0	H	D01S2		1-02 *							1	WIRE-BG4 IN			87
BUS BG4S0				1									8-6/8		87
BUS BG4S4	H	B04E2		1-01 *							1	WIRE-BG4 OUT			88
BUS BG4S4	H	D04I2		1-02 *							1	WIRE-BG4 OUT			88
BUS BG4S4				1									9-0/8		88
BUS BG5S0	H	B01B1		1-01 *							1	WIRE-BG5 IN			89
BUS BG5S0	H	D01P2		1-02 *							1	WIRE-BG5 IN			89
BUS BG5S0				1									9-0/8		89
BUS BG5S4	H	B04B1		1-01 *							1	WIRE-BG5 OUT			90
BUS BG5S4	H	D04R2		1-02 *							1	WIRE-BG5 OUT			90
BUS BG5S4				1									9-2/8		90
BUS BG6S0	H	B01A1		1-01 *							1	WIRE-BG6 IN			91
BUS BG6S0	H	D01M2		1-02 *							1	WIRE-BG6 IN			91
BUS BG6S0				1									9-0/8		91
BUS BG6S4	H	B04A1		1-01 *							1	WIRE-BG6 OUT			92
BUS BG6S4	H	D04N2		1-02 *							1	WIRE-BG6 OUT			92
BUS BG6S4				1									9-2/8		92
BUS BG7S0	H	A01V1		1-01 *							1	WIRE-BG7 IN			93
BUS BG7S0	H	D01K2		1-02 *							1	WIRE-BG7 IN			93
BUS BG7S0				1									9-2/8		93
BUS BG7S4	H	A04V1		1-01 *							1	WIRE-BG7 OUT			94
BUS BG7S4	H	D04L2		1-02 *							1	WIRE-BG7 OUT			94
BUS BG7S4				1									9-4/8		94

DD11B.C RUN NAME	A/P	HND288.V22(22) PIN NAME	11/06/73 ORDER PIN	BAY - ORDER	Q	DRAW	RV	PG	Y	X	Z	REMARKS	6-APR-74 LENGTH	4:16 EXCEPTIONS	PAGE 12 RUN NUMBER
BUS BR4	L	B04D2		1-01 * H							2		P		95
BUS BR4	L	B01D2		1-02 * H							1			HAND WIRE TO HERE	95
BUS BR4	L	D01H2		1-03 * H							2		P	HAND WIRE	95
BUS BR4	L	D02H2		1-04 * H							1		P	HAND WIRE	95
BUS BR4	L	D03H2		1-05 * H							2		P	HAND WIRE	95
BUS BR4	L	D04H2		1-06 * H									P	H TO WHERE	95
BUS BR4				1										20-0/8	95
BUS BR5	L	B04C1		1-01 * H							2		P		96
BUS BR5	L	B01C1		1-02 * H							1			HAND WIRE TO HERE	96
BUS BR5	L	D01F2		1-03 * H							2		P	HAND WIRE	96
BUS BR5	L	D02F2		1-04 * H							1		P	HAND WIRE	96
BUS BR5	L	D03F2		1-05 * H							2		P	HAND WIRE	96
BUS BR5	L	D04F2		1-06 * H									P	H TO WHERE	96
BUS BR5				1										20-2/8	96
BUS BR6	L	A04U2		1-01 * H							2		P		97
BUS BR6	L	A01U2		1-02 * H							1			HAND WIRE TO HERE	97
BUS BR6	L	D01E2		1-03 * H							2		P	HAND WIRE	97
BUS BR6	L	D02E2		1-04 * H							1		P	HAND WIRE	97
BUS BR6	L	D03E2		1-05 * H							2		P	HAND WIRE	97
BUS BR6	L	D04E2		1-06 * H									P	H TO WHERE	97
BUS BR6				1										20-6/8	97
BUS BR7	L	A04I2		1-01 * H							2		P		98
BUS BR7	L	A01I2		1-02 * H							1			HAND WIRE TO HERE	98
BUS BR7	L	D01O2		1-03 * H							2		P	HAND WIRE	98
BUS BR7	L	D02O2		1-04 * H							1		P	HAND WIRE	98
BUS BR7	L	D03O2		1-05 * H							2		P	HAND WIRE	98
BUS BR7	L	D04O2		1-06 * H									P	H TO WHERE	98
BUS BR7				1										20-6/8	98
BUS C0	L	B01U2		1-01 * H							2		P		99
BUS C0	L	B04U2		1-02 * H							1			HAND WIRE TO HERE	99
BUS C0	L	E04J2		1-03 * H							2		P	HAND WIRE	99
BUS C0	L	E03J2		1-04 * H							1		P	HAND WIRE	99
BUS C0	L	E02J2		1-05 * H							2		P	HAND WIRE	99
BUS C0	L	E01J2		1-06 * H									P	H TO WHERE	99
BUS C0				1										21-0/8	99
BUS C1	L	B01I2		1-01 * H							2		P		100
BUS C1	L	B04I2		1-02 * H							1			HAND WIRE TO HERE	100
BUS C1	L	E04F2		1-03 * H							2		P	HAND WIRE	100
BUS C1	L	E03F2		1-04 * H							1		P	HAND WIRE	100
BUS C1	L	E02F2		1-05 * H							2		P	HAND WIRE	100
BUS C1	L	E01F2		1-06 * H									P	H TO WHERE	100
BUS C1				1										20-6/8	100

DD11B.C RUN NAME	A/P	HND288.V22(22) PIN NAME	11/06/73 ORDER PIN	BAY - ORDER	Q	DRAW	RV	PG	Y	X	Z	REMARKS	6-APR-74 LENGTH	4:16 EXCEPTIONS	PAGE 13 RUN NUMBER
BUS D00	L	A04C1		1-01 * H							2		P		101
BUS D00	L	A01C1		1-02 * H							1			HAND WIRE TO HERE	101
BUS D00	L	C01S2		1-03 * H							2		P	HAND WIRE	101
BUS D00	L	C02S2		1-04 * H							1		P	HAND WIRE	101
BUS D00	L	C03S2		1-05 * H							2		P	HAND WIRE	101
BUS D00	L	C04S2		1-06 * H									P	H TO WHERE	101
BUS D00				1										21-2/8	101
BUS D01	L	A01D2		1-01 * H							2				102
BUS D01	L	A04D2		1-02 * H							1			HAND WIRE TO HERE	102
BUS D01	L	C01R2		1-03 * H							2		P	HAND WIRE	102
BUS D01	L	C02R2		1-04 * H							1		P	HAND WIRE	102
BUS D01	L	C03R2		1-05 * H							2		P	HAND WIRE	102
BUS D01	L	C04R2		1-06 * H									P	H TO WHERE	102
BUS D01				1										21-4/8	102
BUS D02	L	A04U1		1-01 * H							2		P		103
BUS D02	L	A01U1		1-02 * H							1			HAND WIRE TO HERE	103
BUS D02	L	C01U2		1-03 * H							2			HAND WIRE	103
BUS D02	L	C02U2		1-04 * H							1			HAND WIRE	103
BUS D02	L	C03U2		1-05 * H							2			HAND WIRE	103
BUS D02	L	C04U2		1-06 * H							1			HAND WIRE	103
BUS D02	L	F01E2		1-07 * H							2		P	HAND WIRE	103
BUS D02	L	F02E2		1-08 * H							1		P	HAND WIRE	103
BUS D02	L	F03E2		1-09 * H							2		P	HAND WIRE	103
BUS D02	L	F04E2		1-10 * H									P	H TO WHERE	103
BUS D02				1										39-0/8	103
BUS D03	L	A01E2		1-01 * H							2				104
BUS D03	L	A04E2		1-02 * H							1			HAND WIRE TO HERE	104
BUS D03	L	C01T2		1-03 * H							2		P	HAND WIRE	104
BUS D03	L	C02T2		1-04 * H							1		P	HAND WIRE	104
BUS D03	L	C03T2	C04T2	1-05 * H							2		P	HAND WIRE	104
BUS D03	L	C04T2		1-06 * H							1			HAND WIRE TO HERE	104
BUS D03	L	F04L1		1-07 * H							2		P	HAND WIRE	104
BUS D03	L	F03L1		1-08 * H							1		P	HAND WIRE	104
BUS D03	L	F02L1		1-09 * H							2		P	HAND WIRE	104
BUS D03	L	F01L1		1-10 * H									P	H TO WHERE	104
BUS D03				1										39-7/8	104

DD118.C RUN NAME	A/P	HND288.V22(22) 11/06/73 PIN NAME	ORDER PIN	BAY - ORDER	Q	DRAW RV PG Y	X	Z	REMARKS	6-APR-74 LENGTH	4116 EXCEPTIONS	PAGE 16 RUN NUMBER
BUS D13	L	A01L2	A04L2	1-01 *	1			1				114
BUS D13	L	A04L2		1-02 *	2			2		3-6		114
BUS D13	L	C01F2		1-03 *	H			1	P		HAND WIRE	114
BUS D13	L	C02F2		1-04 *	H			2	P		HAND WIRE	114
BUS D13	L	C03F2		1-05 *	H			1	P		HAND WIRE	114
BUS D13	L	C04F2		1-06 *	H			1	P		H TO WHERE	114
BUS D13				1						20-1/8		114
BUS D14	L	A04L1		1-01 *	H			2	P		HAND WIRE	115
BUS D14	L	A01L1		1-02 *				1			TU HERE	115
BUS D14	L	C01E2		1-03 *	H			2	P		HAND WIRE	115
BUS D14	L	C02E2		1-04 *	H			1	P		HAND WIRE	115
BUS D14	L	C03E2		1-05 *	H			2	P		HAND WIRE	115
BUS D14	L	C04E2		1-06 *	H			1	P		H TO WHERE	115
BUS D14				1						19-0/8		115
BUS D15	L	A01M2	A04M2	1-01 *	2			2				116
BUS D15	L	A04M2		1-02 *				1		3-4		116
BUS D15	L	C01D2		1-03 *	H			2	P		HAND WIRE	116
BUS D15	L	C02D2		1-04 *	H			1	P		HAND WIRE	116
BUS D15	L	C03D2		1-05 *	H			2	P		HAND WIRE	116
BUS D15	L	C04D2		1-06 *	H			1	P		H TO WHERE	116
BUS D15				1						19-5/8		116
BUS DC L0	L	H04F2		1-01 *	H			2	P		HAND WIRE	117
BUS DC L0	L	H01F2		1-02 *	H			1			HAND WIRE	117
BUS DC L0	L	C01N1		1-03 *				2			TU HERE	117
BUS DC L0	L	C02N1		1-04 *				1				117
BUS DC L0	L	C03N1		1-05 *				2				117
BUS DC L0	L	C04N1		1-06 *				1				117
BUS DC L0				1						17-6/8		117
BUS INIT	L	A04A1		1-01 *	H			2	P		HAND WIRE	118
BUS INIT	L	A01A1		1-02 *	H			1			HAND WIRE	118
BUS INIT	L	D01L1		1-03 *	H			2	P		HAND WIRE	118
BUS INIT	L	D02L1		1-04 *	H			1	P		HAND WIRE	118
BUS INIT	L	D03L1		1-05 *	H			2	P		HAND WIRE	118
BUS INIT	L	D04L1		1-06 *	H			1	P		H TO WHERE	118
BUS INIT				1						23-4/8		118
BUS INTR	L	A04B1	A01B1	1-01 *	H			2	P		HAND WIRE	119
BUS INTR	L	A01B1		1-02 *				1		10-1	TU HERE	119
BUS INTR	L	F01M1		1-03 *	H			2	P		HAND WIRE	119
BUS INTR	L	F02M1		1-04 *	H			1	P		HAND WIRE	119
BUS INTR	L	F03M1		1-05 *	H			2	P		HAND WIRE	119
BUS INTR	L	F04M1		1-06 *	H			1	P		H TO WHERE	119
BUS INTR				1						28-7/8		119

DD118.C RUN NAME	A/P	HND288.V22(22) 11/06/73 PIN NAME	ORDER PIN	BAY - ORDER	Q	DRAW RV PG Y	X	Z	REMARKS	6-APR-74 LENGTH	4116 EXCEPTIONS	PAGE 17 RUN NUMBER
BUS MSYN	L	E01V1		1-01 *	H			2	P		HAND WIRE	120
BUS MSYN	L	E04V1		1-02 *	H			1			HAND WIRE	120
BUS MSYN	L	E04E1		1-03 *	H			2	P		HAND WIRE	120
BUS MSYN	L	E03E1		1-04 *	H			1	P		HAND WIRE	120
BUS MSYN	L	E02E1		1-05 *	H			2	P		HAND WIRE	120
BUS MSYN	L	E01E1		1-06 *	H			1	P		H TO WHERE	120
BUS MSYN				1						20-4/8		120
BUS NPG	H	A01U1		1-01 *	2			2		2-6		121
BUS NPG	H	C01A1		1-02 *				1				121
BUS NPG	H	C01B1		1-03 *	H			2	P		HAND WIRE	121
BUS NPG	H	C02A1		1-04 *				1			TU HERE	121
BUS NPG	H	C02B1		1-05 *	H			2	P		HAND WIRE	121
BUS NPG	H	C03A1		1-06 *				1			TU HERE	121
BUS NPG	H	C03B1	C04A1	1-07 *	H			2	P		HAND WIRE	121
BUS NPG	H	C04A1	C04B1	1-08 *				1			TU HERE	121
BUS NPG	H	C04B1		1-09 *				2		2-6		121
BUS NPG	H	A04U1		1-10 *				1				121
BUS NPG				1						30-4/8		121
BUS NPR	L	A01S2	A04S2	1-01 *	H			2	P		HAND WIRE	122
BUS NPR	L	A04S2		1-02 *				1		7-2	TU HERE	122
BUS NPR	L	F04J1		1-03 *	H			2	P		HAND WIRE	122
BUS NPR	L	F03J1		1-04 *	H			1	P		HAND WIRE	122
BUS NPR	L	F02J1		1-05 *	H			2	P		HAND WIRE	122
BUS NPR	L	F01J1		1-06 *	H			1	P		H TO WHERE	122
BUS NPR				1						27-1/8		122
BUS PA	L	A04M1	A01M1	1-01 *	H			2	P		HAND WIRE	123
BUS PA	L	A01M1		1-02 *				1		3-1	TU HERE	123
BUS PA	L	C01C1		1-03 *				2				123
BUS PA	L	C02C1		1-04 *				1				123
BUS PA	L	C03C1		1-05 *				2				123
BUS PA	L	C04C1		1-06 *				1				123
BUS PA				1						18-7/8		123
BUS PB	L	A04N2		1-01 *	H			2	P		HAND WIRE	124
BUS PB	L	A01N2		1-02 *				1			TU HERE	124
BUS PB	L	C01S1		1-03 *				2				124
BUS PB	L	C02S1		1-04 *				1				124
BUS PB	L	C03S1		1-05 *				2				124
BUS PB	L	C04S1		1-06 *				1				124
BUS PB				1						20-2/8		124

DD11B,C RUN NAME	A/P	PIN NAME	ORDER PIN	BAY - ORDER	Q	DRAW	RV	PG	Y	X	Z	REMARKS	6-APR-74 LENGTH	4116 EXCEPTIONS	PAGE 18 RUN NUMBER
BUS SACK	L	A01R2	A04R2	1-01 *	H						2		P	HAND WIRE	125
BUS SACK	L	A04R2		1-02 *	H						1			HAND WIRE	125
BUS SACK	L	F04T2		1-03 *	H						2		P	HAND WIRE	125
BUS SACK	L	F03T2		1-04 *	H						1		P	HAND WIRE	125
BUS SACK	L	F02T2		1-05 *	H						2		P	HAND WIRE	125
BUS SACK	L	F01T2		1-06 *	H						1		P	H TO WHERE	125
BUS SACK				1										27-6/8	125
BUS SSYN	L	B04U1	B01U1	1-01 *	H						1		P	HAND WIRE	126
BUS SSYN	L	H01U1		1-02 *							2		4-2	TU HERE	126
BUS SSYN	L	F01J1		1-03 *							1				126
BUS SSYN	L	F02J1	E03J1	1-04 *							2				126
BUS SSYN	L	E03J1	E04J1	1-05 *							1				126
BUS SSYN	L	E04J1		1-06 *							2		2-1		126
BUS SSYN	L	F04C1		1-07 *	H						1		P	HAND WIRE	126
BUS SSYN	L	F03C1		1-08 *	H						2		P	HAND WIRE	126
BUS SSYN	L	F02C1		1-09 *	H						1		P	HAND WIRE	126
BUS SSYN	L	F01C1		1-10 *	H						1		P	H TO WHERE	126
BUS SSYN				1										34-2/8	126
C EIA CARRIER	H	A03P2		1-01 *							1				127
C EIA CARRIER	H	H03H2		1-02 *											127
C EIA CARRIER				1										4-2/8	127
C EIA CLR TO SEND	H	A03M2		1-01 *							1				128
C EIA CLR TO SEND	H	H03K2		1-02 *											128
C EIA CLR TO SEND				1										4-6/8	128
C EIA DATA TERM RXY	H	A03R2		1-01 *							1				129
C EIA DATA TERM RXY	H	H03K2		1-02 *											129
C EIA DATA TERM RXY				1										5-0/8	129
C EIA RCV DATA	H	A03F2		1-01 *							1				130
C EIA RCV DATA	H	H03J2		1-02 *											130
C EIA RCV DATA				1										5-2/8	130
C EIA REQ TO SEND	H	A03L2		1-01 *							1				131
C EIA REQ TO SEND	H	H03T2		1-02 *											131
C EIA REQ TO SEND				1										5-6/8	131
C EIA RING	H	A03K2		1-01 *							1				132
C EIA RING	H	H03M2		1-02 *											132
C EIA RING				1										5-2/8	132
C EIA SEC RCV DATA	H	A03F1		1-01 *							1				133
C EIA SEC RCV DATA	H	H03L2		1-02 *											133
C EIA SEC RCV DATA				1										5-6/8	133

DD11B,C RUN NAME	A/P	PIN NAME	ORDER PIN	BAY - ORDER	Q	DRAW	RV	PG	Y	X	Z	REMARKS	6-APR-74 LENGTH	4116 EXCEPTIONS	PAGE 19 RUN NUMBER
C EIA SEC TRANS DATA	H	A03E1		1-01 *							1				134
C EIA SEC TRANS DATA	H	B03U1		1-02 *											134
C EIA SEC TRANS DATA				1										6-4/8	134
C EIA TRANSMIT DATA	H	A03E2		1-01 *							1				135
C EIA TRANSMIT DATA	H	H03V1		1-02 *											135
C EIA TRANSMIT DATA				1										6-6/8	135
C IN/C SEL RCV DATA	H	B03E1		1-01 *							1				136
C IN/C SEL RCV DATA	H	D03H1		1-02 *							2				136
C IN/C SEL RCV DATA	H	E03M1		1-03 *											136
C IN/C SEL RCV DATA				1										13-0/8	136
C INT A	H	D03N1		1-01 *							1				137
C INT A	H	F03U1		1-02 *											137
C INT A				1										8-2/8	137
C INT B	H	C03J1		1-01 *							1				138
C INT B	H	F03K2		1-02 *											138
C INT B				1										10-4/8	138
C INT ENB A	H	D03M1		1-01 *							1				139
C INT ENB A	H	F03V1		1-02 *											139
C INT ENB A				1										8-4/8	139
C INT ENB B	H	C03L1		1-01 *							1				140
C INT ENB B	H	F03H2		1-02 *											140
C INT ENB B				1										10-0/8	140
C OUT HIGH	H	D03K1		1-01 *							1				141
C OUT HIGH	H	E03M2		1-02 *											141
C OUT HIGH				1										5-2/8	141
C OUT LO/C CLR TO SEND	H	B03F2		1-01 *							1				142
C OUT LO/C CLR TO SEND	H	D03D1		1-02 *							2				142
C OUT LO/C CLR TO SEND	H	E03N1		1-03 *											142
C OUT LO/C CLR TO SEND				1										13-2/8	142
C SEL 0/C RING	H	B03C1		1-01 *							1				143
C SEL 0/C RING	H	D03F1		1-02 *							2				143
C SEL 0/C RING	H	F03S2		1-03 *											143
C SEL 0/C RING				1										14-0/8	143
C SEL 4/C CARRIER	H	B03B1		1-01 *							1				144
C SEL 4/C CARRIER	H	D03E1		1-02 *							2				144
C SEL 4/C CARRIER	H	F03R2		1-03 *											144
C SEL 4/C CARRIER				1										14-2/8	144

DD118.C
RUN NAMEHND288.V22(22) 11/06/73
A/P PIN ORDER BAY -
NAME PIN ORDER

U DRAW RV PG Y X Z REMARKS

6-APR-74

4116

PAGE 20

LENGTH

EXCEPTIONS

RUN

NUMBER

C SEL 6/C XMIT DATA
C SEL 6/C XMIT DATA
C SEL 6/C XMIT DATA
C SEL 6/C XMIT DATAH B03V2 1-01 *
H D03C1 1-02 *
H E03S1 1-03 *
1

2

1

12-2/8

145

145

145

145

C SELECT 2
C SELECT 2
C SELECT 2H D03J1 1-01 *
H E03T2 1-02 *
1

1

6-0/8

146

146

146

C SSYN INHIBIT
C SSYN INHIBIT
C SSYN INHIBITL D03V1 1-01 *
L E03R1 1-02 *
1

1

2-6/8

147

147

147

C TTL DATA SET RDY
C TTL DATA SET RDY
C TTL DATA SET RDYH D03P1 1-01 *
H B03D2 1-02 *
1

1

9-0/8

148

148

148

C TTL DATA TERM RDY
C TTL DATA TERM RDY
C TTL DATA TERM RDYH B03P2 1-01 *
H C03F1 1-02 *
1

1

4-0/8

149

149

149

C TTL EXT SER CLK XMIT
C TTL EXT SER CLK XMIT
C TTL EXT SER CLK XMITH B03R1 1-01 * H
H D03R1 1-02 *
1

1

TWISTED PAIR
TWISTED PAIRHAND WIRE
TO HERE

6-0/8

150

150

150

C TTL RCV DATA
C TTL RCV DATA
C TTL RCV DATAH B03D1 1-01 *
H D03A1 1-02 *
1

1

7-2/8

151

151

151

C TTL REQ TO SEND
C TTL REQ TO SEND
C TTL REQ TO SENDH B03S2 1-01 *
H C03M1 1-02 *
1

1

4-4/8

152

152

152

C TTL SEC TRANS DATA
C TTL SEC TRANS DATA
C TTL SEC TRANS DATAH B03U2 1-01 *
H C03N1 1-02 *
1

1

4-0/8

153

153

153

C TTL SERIAL CLK RCV
C TTL SERIAL CLK RCV
C TTL SERIAL CLK RCVH B03H1 1-01 * H
H D03S1 1-02 *
1

1

TWISTED PAIR
TWISTED PAIRHAND WIRE
TO HERE

8-4/8

154

154

154

C TTL SERIAL CLK XMIT
C TTL SERIAL CLK XMIT
C TTL SERIAL CLK XMITH B03R1 1-01 * H
H D03R1 1-02 *
1

1

TWISTED PAIR
TWISTED PAIRHAND WIRE
TO HERE

8-2/8

155

155

155

DD118.C
RUN NAMEHND288.V22(22) 11/06/73
A/P PIN ORDER BAY -
NAME PIN ORDER

U DRAW RV PG Y X Z REMARKS

6-APR-74

4116

PAGE 21

LENGTH

EXCEPTIONS

RUN

NUMBER

C01P1
C01P1
C01P1C01P1 1-01 * 1
C02P1 1-02 *
1

1

2-6/8

156

156

156

C01R1
C01R1
C01R1C01R1 1-01 * 1
C02R1 1-02 *
1

1

2-6/8

157

157

157

C03P1
C03P1
C03P1C03P1 1-01 * 1
C04P1 1-02 *
1

1

2-6/8

158

158

158

C03R1
C03R1
C03R1C03R1 1-01 * 1
C04R1 1-02 *
1

1

2-6/8

159

159

159

CBG IN
CBG IN
CBG INH D03U2 1-01 *
H F03B1 1-02 *
1

1

5-6/8

160

160

160

CBG OUT
CBG OUT
CBG OUTH D03V2 1-01 *
H F03A1 1-02 *
1

1

5-6/8

161

161

161

CBR OUT
CBR OUT
CBR OUT
CBR OUTL D03J2 1-01 *
L F03P1 1-02 *
L F03U2 1-03 *
1

1

2

11-4/8

162

162

162

162

D IN
D IN
D INH D04M1 1-01 *
H E04M1 1-02 *
1

1

5-2/8

163

163

163

D INT A
D INT A
D INT AH D04N1 1-01 * 1
H F04U1 1-02 *
1

1

3-7

164

164

164

D INT B
D INT B
D INT BH C04J1 1-01 *
H F04K2 1-02 *
1

1

10-4/8

165

165

165

D INT ENB A
D INT ENB A
D INT ENB AH D04M1 1-01 *
H F04V1 1-02 *
1

1

8-4/8

166

166

166

DD11B.C RUN NAME	A/P	HND288.V22(22) PIN NAME	11/06/73 ORDER PIN	BAY - ORDER	Q	DRAW	KV	PG	Y	X	Z	REMARKS	6-APR-74 LENGTH	4116 EXCEPTIONS	PAGE 22 RUN NUMBER
D INT ENB B	H	C04L1		1-01 *							1				167
D INT ENB B	H	F04H2		1-02 *											167
D INT ENB B				1									10-0/8		167
D OUT HIGH	H	D04K1		1-01 *							1				168
D OUT HIGH	H	F0442		1-02 *											168
D OUT HIGH				1									5-2/8		168
D OUT LOW	H	D04D1		1-01 *							1				169
D OUT LOW	H	F04N1		1-02 *											169
D OUT LOW				1									5-6/8		169
D SELECT 0	H	D04F1		1-01 *							1				170
D SELECT 0	H	F04S2		1-02 *											170
D SELECT 0				1									6-0/8		170
D SELECT 2	H	D04J1		1-01 *							1				171
D SELECT 2	H	F0412		1-02 *											171
D SELECT 2				1									6-0/8		171
D SELECT 4	H	D04E1		1-01 *							1				172
D SELECT 4	H	F04R2		1-02 *											172
D SELECT 4				1									6-2/8		172
D SELECT 6	H	D04C1		1-01 *							1				173
D SELECT 6	H	F04S1		1-02 *											173
D SELECT 6				1									6-2/8		173
D SSYN INHIBIT	L	D04V1		1-01 *							1				174
D SSYN INHIBIT	L	F04B1		1-02 *											174
D SSYN INHIBIT				1									2-6/8		174
D01L2		D01L2		1-01 *	H						1		P		175
D01L2		D02K2		1-02 *	H								P	HAND WIRE H TO WHERE	175
D01L2				1										2-6/8	175
D01N2		D01N2		1-01 *	H						1		P		176
D01N2		D02M2		1-02 *	H								P	HAND WIRE H TO WHERE	176
D01N2				1										2-6/8	176
D01R2		D01R2		1-01 *	H						1		P		177
D01R2		D02P2		1-02 *	H								P	HAND WIRE H TO WHERE	177
D01R2				1										2-6/8	177
D01T2		D01T2		1-01 *	H						1		P		178
D01T2		D02S2		1-02 *	H								P	HAND WIRE H TO WHERE	178
D01T2				1										2-6/8	178

DD11B.C RUN NAME	A/P	HND288.V22(22) PIN NAME	11/06/73 ORDER PIN	BAY - ORDER	Q	DRAW	KV	PG	Y	X	Z	REMARKS	6-APR-74 LENGTH	4116 EXCEPTIONS	PAGE 23 RUN NUMBER
D02L2		D02L2		1-01 *	H						1		P		179
D02L2		D03K2		1-02 *	H								P	HAND WIRE H TO WHERE	179
D02L2				1										2-6/8	179
D02N2		D02N2		1-01 *	H						1		P		180
D02N2		D03M2		1-02 *	H								P	HAND WIRE H TO WHERE	180
D02N2				1										2-6/8	180
D02R2		D02R2		1-01 *	H						1		P		181
D02R2		D03P2		1-02 *	H								P	HAND WIRE H TO WHERE	181
D02R2				1										2-6/8	181
D02T2		D02T2		1-01 *	H						1		P		182
D02T2		D03S2		1-02 *	H								P	HAND WIRE H TO WHERE	182
D02T2				1										2-6/8	182
D03L2		D03L2		1-01 *	H						1		P		183
D03L2		D04K2		1-02 *	H								P	HAND WIRE H TO WHERE	183
D03L2				1										2-6/8	183
D03N2		D03N2		1-01 *	H						1		P		184
D03N2		D04M2		1-02 *	H								P	HAND WIRE H TO WHERE	184
D03N2				1										2-6/8	184
D03R2		D03R2		1-01 *	H						1		P		185
D03R2		D04P2		1-02 *	H								P	HAND WIRE H TO WHERE	185
D03R2				1										2-6/8	185
D03T2		D03T2		1-01 *	H						1		P		186
D03T2		D04S2		1-02 *	H								P	HAND WIRE H TO WHERE	186
D03T2				1										2-6/8	186
DBG IN	H	D04U2		1-01 *							1				187
DBG IN	H	F04B1		1-02 *											187
DBG IN				1										5-6/8	187
DBG OUT	H	D04V2		1-01 *							1				188
DBG OUT	H	F04A1		1-02 *										2-5	188
DBG OUT				1										5-7/8	188
DBR OUT	L	D04J2		1-01 *	1						1				189
DBR OUT	L	F04P1		1-02 *											189
DBR OUT	L	F04U2		1-03 *							2				189
DBR OUT				1										11-5/8	189

DD11B.C		HND288.V22(22) 11/06/73										6-APR-74	4116	PAGE 24		
RUN NAME		A/P	PIN	ORDER	BAY -	Q	DRW	RV	PG	Y	X	Z	REMARKS	LENGTH	EXCEPTIONS	RUN
			NAME	PIN	ORDER											NUMBER
F01L2	F01L2		F01L2		1-01 *							1	*WIRE-IN DN A			190
F01L2	F01R1		F01R1		1-02 *							1	WIRE-CLEAR A			190
F01L2					1									3-0/8		190
F01M2	F01M2		F01M2		1-01 *							1	*WIRE-IN DN B			191
F01M2	F01S1		F01S1		1-02 *							1	WIRE-CLEAR B			191
F01M2					1									3-0/8		191
F01N1	F01D2		F01D2		1-01 *							2	WIRE-VECTR 2			192
F01N1	F01R2		F01R2		1-02 *							1	*WIRE-ST IN A			192
F01N1	F01N1		F01N1		1-03 *							1	WIRE-MASTR A			192
F01N1					1									6-2/8		192
F01P2	F01P2		F01P2		1-01 *	H						1		P	HAND WIRE	193
F01P2	F01S2		F01S2		1-02 *	H						1		P	H TO WHERE	193
F01P2					1									2-4/8		193
F01V2	F01E1		F01E1		1-01 *							1	WIRE-BG IN B			194
F01V2	F01V2		F01V2		1-02 *							1	WIRE-BG UT A			194
F01V2					1									4-2/8		194
F02L2	F02L2		F02L2		1-01 *							1	WIRE-IN DN A			195
F02L2	F02R1		F02R1		1-02 *							1	WIRE-CLEAR A			195
F02L2					1									3-0/8		195
F02M2	F02M2		F02M2		1-01 *							1	WIRE-IN DN B			196
F02M2	F02S1		F02S1		1-02 *							1	WIRE-CLEAR B			196
F02M2					1									3-0/8		196
F02N1	F02D2		F02D2		1-01 *							2	WIRE-VECTR 2			197
F02N1	F02R2		F02R2		1-02 *							1	WIRE-ST IN A			197
F02N1	F02N1		F02N1		1-03 *							1	WIRE-MASTR A			197
F02N1					1									6-2/8		197
F02P2	F02P2		F02P2		1-01 *	H						1		P	HAND WIRE	198
F02P2	F02S2		F02S2		1-02 *	H						1		P	H TO WHERE	198
F02P2					1									2-4/8		198
F02V2	F02E1		F02E1		1-01 *							1	WIRE-BG IN B			199
F02V2	F02V2		F02V2		1-02 *							1	WIRE-BG UT B			199
F02V2					1									4-2/8		199
F03L2	F03L2		F03L2		1-01 *							1	WIRE-IN DN A			200
F03L2	F03R1		F03R1		1-02 *							1	WIRE-CLEAR A			200
F03L2					1									3-0/8		200

DD11B.C		HND288.V22(22) 11/06/73										6-APR-74	4116	PAGE 25		
RUN NAME		A/P	PIN	ORDER	BAY -	Q	DRW	RV	PG	Y	X	Z	REMARKS	LENGTH	EXCEPTIONS	RUN
			NAME	PIN	ORDER											NUMBER
F03M2	F03M2		F03M2		1-01 *							1	WIRE-IN DN B			201
F03M2	F03S1		F03S1		1-02 *							1	WIRE-CLEAR B			201
F03M2					1									3-0/8		201
F03N1	F03D2		F03D2		1-01 *							2	WIRE-VECTR 2			202
F03N1	F03R2		F03R2		1-02 *							1	WIRE-ST IN A			202
F03N1	F03N1		F03N1		1-03 *							1	WIRE-MASTR A			202
F03N1					1									6-2/8		202
F03P2	F03P2		F03P2		1-01 *	H						1		P	HAND WIRE	203
F03P2	F03S2		F03S2		1-02 *	H						1		P	H TO WHERE	203
F03P2					1									2-4/8		203
F03V2	F03E1		F03E1		1-01 *							1	WIRE-BG IN B			204
F03V2	F03V2		F03V2		1-02 *							1	WIRE-BG UT B			204
F03V2					1									4-2/8		204
F04L2	F04L2		F04L2		1-01 *							1	WIRE-IN DN A			205
F04L2	F04R1		F04R1		1-02 *							1	WIRE-CLEAR A			205
F04L2					1									3-0/8		205
F04M2	F04M2		F04M2		1-01 *							1	WIRE-IN DN B			206
F04M2	F04S1		F04S1		1-02 *							1	WIRE-CLEAR B			206
F04M2					1									3-0/8		206
F04N1	F04D2		F04D2		1-01 *							2	WIRE-VECTR 2			207
F04N1	F04R2		F04R2		1-02 *							1	WIRE-ST IN A			207
F04N1	F04N1		F04N1		1-03 *							1	WIRE-MASTR A			207
F04N1					1									6-2/8		207
F04P2	F04P2		F04P2		1-01 *	H						1		P	HAND WIRE	208
F04P2	F04S2		F04S2		1-02 *	H						1		P	H TO WHERE	208
F04P2					1									2-4/8		208
F04V2	F04E1		F04E1		1-01 *							1	WIRE-BG IN B			209
F04V2	F04V2		F04V2		1-02 *							1	WIRE-BG UT B			209
F04V2					1									4-2/8		209

DD11B.C
RUN NAME

HND288.V22(22) 11/06/73
A/P PIN ORDER BAY - U DRAW RV PG Y X Z REMARKS

6-APR-74 4116 PAGE 26
LENGTH EXCEPTIONS RUN
NUMBER

A/P	PIN	ORDER	BAY -	U	DRAW	RV	PG	Y	X	Z	REMARKS	6-APR-74	4116	PAGE 26
NAME	PIN	ORDER	ORDER									LENGTH	EXCEPTIONS	RUN
GND	A0202	1-01	*							1				210
GND	A0212	1-02	*							2				210
GND	A0302	1-03	*							1				210
GND	A0312	1-04	*							2				210
GND	A0102	1-05	*	H						1		P	HAND WIRE	210
GND	A01C2	1-06	*	H						2		P	HAND WIRE	210
GND	A01N1	1-07	*	H						1		P	HAND WIRE	210
GND	A01P1	1-08	*	H						2		P	HAND WIRE	210
GND	A01R1	1-09	*	H						1		P	HAND WIRE	210
GND	A01S1	1-10	*	H						2		P	HAND WIRE	210
GND	A0111	1-11	*	H						1		P	HAND WIRE	210
GND	A01V2	1-12	*	H						2		P	HAND WIRE	210
GND	A02C2	1-13	*	H						1		P	HAND WIRE	210
GND	A02F1	1-14	*	H						2		P	HAND WIRE	210
GND	A03C2	1-15	*	H						1		P	HAND WIRE	210
GND	A0311	1-16	*	H						2		P	HAND WIRE	210
GND	A0402	1-17	*	H						1		P	HAND WIRE	210
GND	A04C2	1-18	*	H						2		P	HAND WIRE	210
GND	A04N1	1-19	*	H						1		P	HAND WIRE	210
GND	A04P1	1-20	*	H						2		P	HAND WIRE	210
GND	A04H1	1-21	*	H						1		P	HAND WIRE	210
GND	A04S1	1-22	*	H						2		P	HAND WIRE	210
GND	A0411	1-23	*	H						1		P	HAND WIRE	210
GND	A04V2	1-24	*	H						2		P	HAND WIRE	210
GND	B0102	1-25	*	H						1		P	HAND WIRE	210
GND	B01C2	1-26	*	H						2		P	HAND WIRE	210
GND	B0101	1-27	*	H						1		P	HAND WIRE	210
GND	B0101	1-28	*	H						2		P	HAND WIRE	210
GND	B0111	1-29	*	H						1		P	HAND WIRE	210
GND	B01V2	1-30	*	H						2		P	HAND WIRE	210
GND	B02C2	1-31	*	H						1		P	HAND WIRE	210
GND	B0211	1-32	*	H						2		P	HAND WIRE	210
GND	B03C2	1-33	*	H						1		P	HAND WIRE	210
GND	B03T1	1-34	*	H						2		P	HAND WIRE	210
GND	B0402	1-35	*	H						1		P	HAND WIRE	210
GND	B04C2	1-36	*	H						2		P	HAND WIRE	210
GND	B0401	1-37	*	H						1		P	HAND WIRE	210
GND	B04E1	1-38	*	H						2		P	HAND WIRE	210
GND	B04T1	1-39	*	H						1		P	HAND WIRE	210
GND	B04V2	1-40	*	H						2		P	HAND WIRE	210
GND	C01C2	1-41	*	H						1		P	HAND WIRE	210
GND	C0111	1-42	*	H						2		P	HAND WIRE	210
GND	C02C2	1-43	*	H						1		P	HAND WIRE	210
GND	C02T1	1-44	*	H						2		P	HAND WIRE	210
GND	C03C2	1-45	*	H						1		P	HAND WIRE	210
GND	C0311	1-46	*	H						2		P	HAND WIRE	210
GND	C04C2	1-47	*	H						1		P	HAND WIRE	210
GND	C0411	1-48	*	H						2		P	HAND WIRE	210
GND	D01C2	1-49	*	H						1		P	HAND WIRE	210
GND	D01T1	1-50	*	H						2		P	HAND WIRE	210
GND	D02C2	1-51	*	H						1		P	HAND WIRE	210
GND	D02T1	1-52	*	H						2		P	HAND WIRE	210
GND	D03C2	1-53	*	H						1		P	HAND WIRE	210
GND	D03T1	1-54	*	H						2		P	HAND WIRE	210
GND	D04C2	1-55	*	H						1		P	HAND WIRE	210
GND	D04T1	1-56	*	H								P	H TO WHERE	210

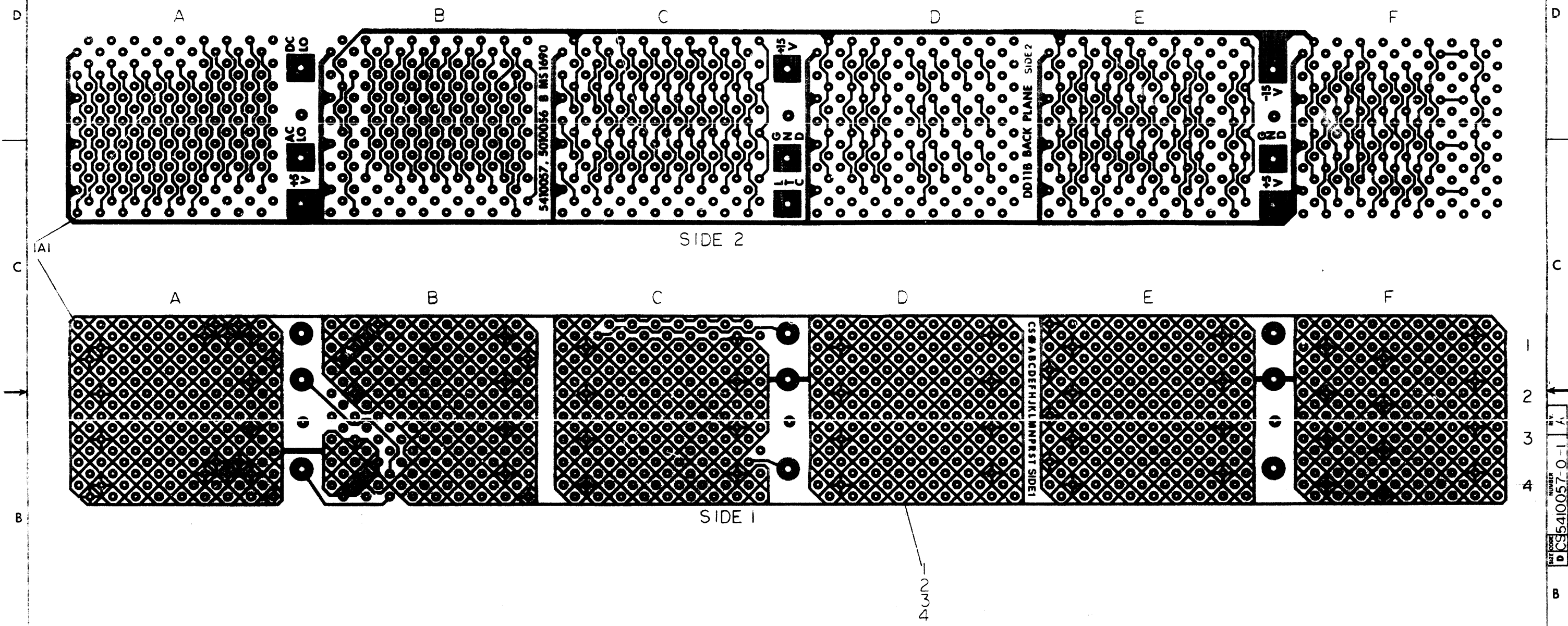
DD11B.C
RUN NAME

HND288.V22(22) 11/06/73
A/P PIN ORDER BAY - U DRAW RV PG Y X Z REMARKS

6-APR-74 4116 PAGE 27
LENGTH EXCEPTIONS RUN
NUMBER

A/P	PIN	ORDER	BAY -	U	DRAW	RV	PG	Y	X	Z	REMARKS	6-APR-74	4116	PAGE 27
NAME	PIN	ORDER	ORDER									LENGTH	EXCEPTIONS	RUN
GND			1									194-2/8		210
GND A	E01A1	1-01	*	H						2		P	HAND WIRE	211
GND A	E01C2	1-02	*	H						1		P	HAND WIRE	211
GND A	E0111	1-03	*	H						2		P	HAND WIRE	211
GND A	E02A1	1-04	*	H						1		P	HAND WIRE	211
GND A	E02C2	1-05	*	H						2		P	HAND WIRE	211
GND A	E02T1	1-06	*	H						1		P	HAND WIRE	211
GND A	E03A1	1-07	*	H						2		P	HAND WIRE	211
GND A	E03C2	1-08	*	H						1		P	HAND WIRE	211
GND A	E03T1	1-09	*	H						2		P	HAND WIRE	211
GND A	E04A1	1-10	*	H						1		P	HAND WIRE	211
GND A	E04C2	1-11	*	H						2		P	HAND WIRE	211
GND A	E04T1	1-12	*	H						1		P	HAND WIRE	211
GND A	F01C2	1-13	*	H						2		P	HAND WIRE	211
GND A	F01J2	1-14	*	H						1		P	HAND WIRE	211
GND A	F01T1	1-15	*	H						2		P	HAND WIRE	211
GND A	F02C2	1-16	*	H						1		P	HAND WIRE	211
GND A	F02J2	1-17	*	H						2		P	HAND WIRE	211
GND A	F02T1	1-18	*	H						1		P	HAND WIRE	211
GND A	F03C2	1-19	*	H						2		P	HAND WIRE	211
GND A	F03J2	1-20	*	H						1		P	HAND WIRE	211
GND A	F03T1	1-21	*	H						2		P	HAND WIRE	211
GND A	F04C2	1-22	*	H						1		P	HAND WIRE	211
GND A	F04J2	1-23	*	H						2		P	HAND WIRE	211
GND A	F04T1	1-24	*	H								P	H TO WHERE	211
GND A			1									83-4/8		211
LTC	C0101	1-01	*	H						2		P	HAND WIRE	212
LTC	C0201	1-02	*	H						1			TU HERE	212
LTC	C0301	1-03	*	H						2		P	HAND WIRE	212
LTC	C0401	1-04	*	H								P	H TO WHERE	212
LTC			1									8-2/8		212

This drawing and specifications, herein, are the property of Digital Equipment Corporation and shall not be reproduced or copied in whole or in part as the basis for the manufacture or sale of items without written permission.



1	ETCHED CIRCUIT BOARD	5010056	4
REF	MODULE ECO HISTORY	B-MH-5410057-0-6	3
REF	ASSY/DRILLING HOLE LAYOUT	E-AH-5410057-0-5	2
REF	X-Y COORDINATE HOLE LOCATION	K-CO-5410057-0-4	1

FIRST USED ON OPTION/MODEL	QTY.	DESCRIPTION	PART NO.	ITEM NO.
DD11-B				

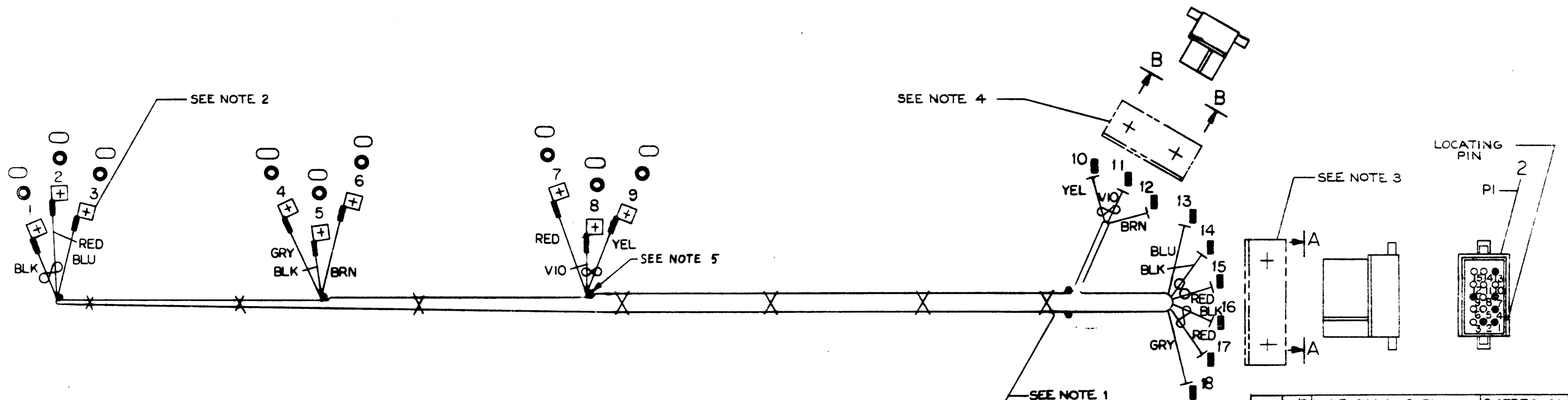
UNLESS OTHERWISE SPECIFIED DIMENSION IN INCHES		TOLERANCES		DECIMALS		ANGLES	
.XXX - .005	.XXX - .02	.XXX - .01	.XXX - .02	.XXX - .005	.XXX - .02	.XXX - .01	.XXX - .02
REMOVE BURRS AND BREAK SHARP CORNERS SURFACE QUALITY							

MATERIAL		NEXT HIGHER ASSY.		TITLE	
		A-PL-DD11-B-0		CIRCUIT SCHEMATIC (DD11-B)	
FINISH		SCALE 2/1		DRAWN BY	
		SHEET 2/1		DATE 7/22/72	
		OF		DATE 7/22/72	
		DIST.		DATE 7/22/72	

REV.	CHANGE NO.	REVISIONS

ITEM NO	DESCRIPTION	COLOR	FROM			TO			REMARKS
			POINT	CONNECTION	TERM	POINT	CONNECTION	TERM	
7	14 TWP	RED	7		5,6	17	P1-1	3	+5V
		BLK	5			16	P1-7		GND
9	18 AWG	GRY	4			18	P1-2		+15
7	14 TWP	RED	2			15	P1-4		+5
		BLU	1			14	P1-9		GND
11	14 AWG	BLU	3			13	P1-13		-15
10	18 AWG	BRN	6			12	P2-2		LINE CLOCK
8	18 TWP	VIO	8			11	P2-3		DC LD
		YEL	9		5,6	10	P2-4	3	AC LD

- NOTES:
1. USE TIE WRAPS (X) ITEM 4 APPROXIMATELY EVERY THREE (3) INCHES WHEN NECESSARY, AND AT EVERY BREAK-OUT POINT.
 2. ATTACH MALE FASTEN DEC 9008219-0 WITH * 4 WOOD SCREWS (9 PLACES).
 3. USE CONN. BRKT C-ND-9305761-H15-0 MOUNT WITH * 6 WOOD SCREWS. USE MATING CONN. 1209350-15.
 4. USE CONN. BRKT C-ND-9305761-H6-0 MOUNT WITH * 6 WOOD SCREWS. USE MATING CONN. 1209350-06.
 5. DOT (●) INDICATES NAIL LOCATIONS FOR ASSEMBLY USE ONLY. COVER NAILS WITH SHRINK TUBING TO PREVENT CUTTING HARNESS.



	A/R WIRE, *14 AWG BLU	9107370-66	11
	A/R WIRE, *18 AWG BRN	9107360-11	10
	A/R WIRE, *18 AWG GRY	9107360-08	9
	A/R WIRE, *18 TWP YEL/VIO	9107430-47	8
	A/R WIRE, *14 TWP BLK/RED	9107440-02	7
○	A/R TUBING, SHRINK	9107305-02	6
●	9 CONN., SOLDERLESS	9009262-0	5
X	A/R WRAP, TIE	9007031	4
■	9 PIN, MALE	1209378-01	3
	1 HOUSING, CONN. 15 PIN	1209351-15	2
	1 HOUSING, CONN. 6 PIN	1209351-06	1

DO NOT REDUCE SCALE 6 IN. 12 IN.

DO NOT BUILD FROM REDUCED PRINT

CAUTION - DRAWING SIZE AND SCALE REDUCED FOR MICROFILM NOT TO BE USED FOR PRODUCTION

FIRST USED ON OPT/MISC	SYN	QTY.	DESCRIPTION	PART NO.	ITEM NO.
PARTS LIST					
UNLESS OTHERWISE SPECIFIED DIMENSION IN INCHES		TOLERANCES		DATE	
DECIMALS	ANGLES			9-26-73	
.XX - .00	±0° 30'			DATE	
.XX - .01				10/1/73	
REMOVE BURRS AND BREAK SHARP EDGES SURFACE QUALITY		DATE		10/1/73	
MATERIAL		NEXT HIGHER ASSY.		DATE	
SEE PARTS LIST				10/1/73	
PURCH		REVISION		DATE	
		1/1		10/1/73	
		OF		DATE	
				10/1/73	

REVISIONS
CHK CHANGE NO. REV

NUMBER
DIA7009563-0-0

EQUIPMENT CORPORATION
TITLE
POWER HARNESS
DA11-F/DD11-B
NUMBER
DIA7009563-0-0
REV.

DIGITAL EQUIPMENT CORPORATION
MAYNARD, MASSACHUSETTS
PARTS LIST

QUANTITY VARIATION

MADE BY G. FLANDERS	CHECKED <i>C. Teschner</i>	SECTION 1
DATE 8/23/72	DATE 7/1/72	
ENG <i>W.F.</i>	PROD <i>W.F.</i>	ISSUED SECT. 1
DATE 9-15-72	DATE 7/22/72	

ITEM NO.	DWG NO. / PART NO.	DESCRIPTION	QTY	VAR
1	C-IA-7009062-0-0	WIRED ASSY (DD11-B)	1	
2	D-MU-DD11-B-1	MODULE UTILIZATION (DD11-B)	1	
3	A-PL-DD11-B-1	MODULE UTILIZATION (DD11-B) P.L.	1	
4	D-IA-7009099-0-0	POWER HARNESS	1	
5	D-IA-7009563-0-0	DA11-F/DD11-B OPTION HARNESS*	1	
*NOTE: FOR 11/45-11/50 CPU WITH SERIAL NO. LESS THAN 2000 USE HARNESS 7009162. FOR 11/35-11/40 CPU WITH S/N LESS THAN 6000 OR H960-D,E WITH S/N LESS THAN 7000 USE HARNESS 7009099.				
REF	D-CS-5410057-0-1	CIRCUIT SCHEMATIC	1	
WARNING: THIS OPTION MUST BE USED ONLY WITH MOUNTING BOXES BUSSING POWER TO THE BACK PLANE VIA FASTON CONNECTORS. G772 POWER BUS MODULES MUST NOT BE PLUGGED INTO ANY SLOT IN THE DD11-B.				

TITLE PERIPHERAL MOUNTING PANEL	ASSY NO. <i>/ /</i>	SIZE A	CODE PL	NUMBER DD11-E-0	REV. A	ECO NO. DDIIB-00004
SHEET 1 OF 1		DIST.				