

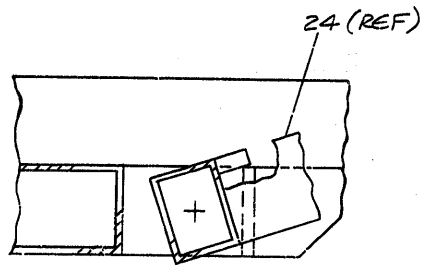
This drawing and specifications, herein, are the property of Digital Equipment Corporation and shall not be reproduced or copied or used in whole or in part as the basis for the manufacture or sale of items without written permission.

MASTER DRAWING LIST

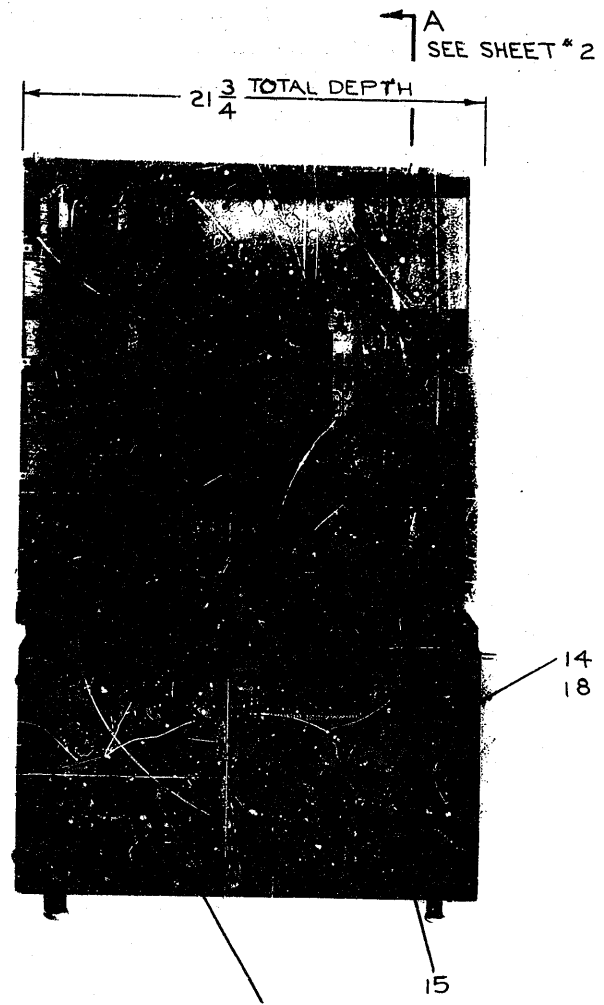
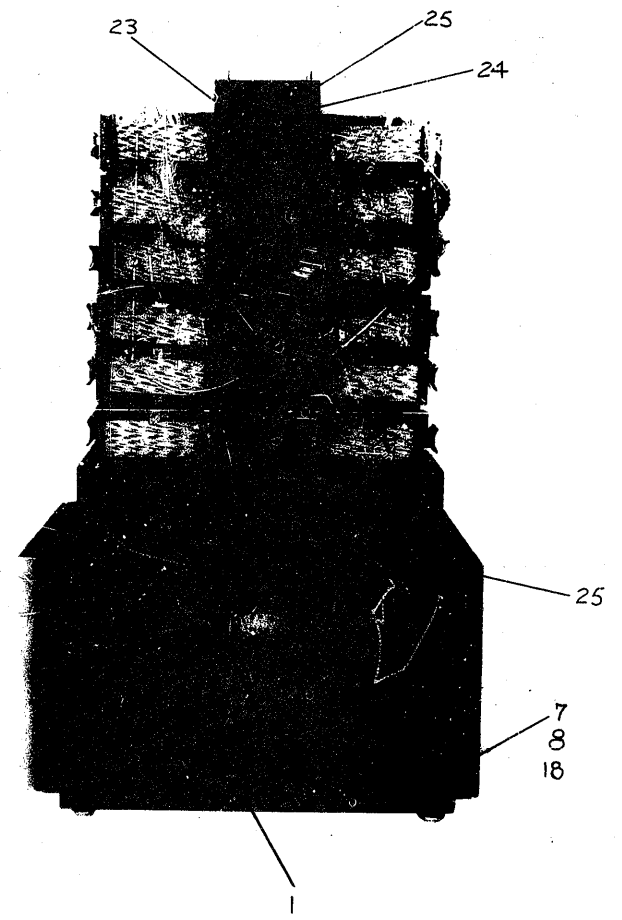
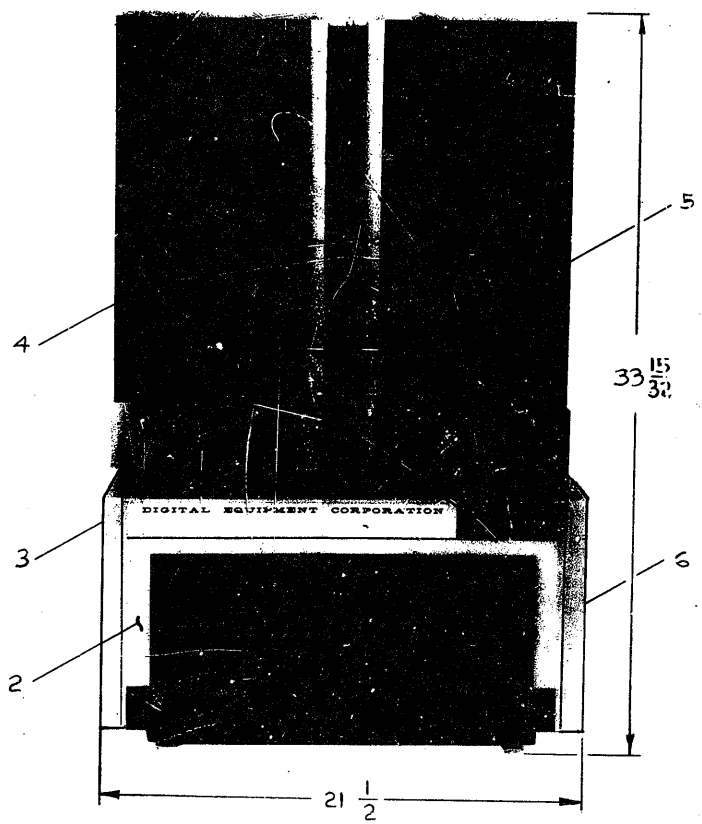
DWG. NO.	REV. LET.	NO. OF SHEETS	TITLE
MA-D-8-0-1		2	MECH. ASSEMBLY FOR PDP-8
WD-D-8-0-14	D	1	BUS BAR FOR POWER & LOGIC WIRING
BS-D-8M-0-11	H	1	TELEPRINTER
BS-D-8M-0-12	B	1	X AXIS SELECTION
BS-D-8M-0-13	B	1	Y AXIS SELECTION
BS-D-8M-0-15	J	1	INHIBIT DRIVER, SENSE AMPS. & MEM. CONT.
BS-D-8M-0-16	B	1	IO BUFFERS
WL-K-8M-0-18	W		MEMORY WIRING LIST
UML-E-8M-0-20	R	1	MEMORY UTILIZATION MODULE LIST
CL-A-8M-0-35	B	2	AC BITS & IOP's
CL-A-8M-0-38	A	2	MB BITS
CL-A-8M-0-40	A	2	SENSE AMPS
CL-A-8M-0-44	A	1	TELEPRINTER
CL-A-8M-0-39	A	1	INDICATOR CONNECTOR MA-35
CL-A-8M-0-30	B	7	PROCESSOR & MEMORY CHASSIS CONN.

REVISIONS				DRN.	DATE	digital EQUIPMENT CORPORATION MAYNARD, MASSACHUSETTS			
REV.	DATE	CHG. NO.	APP'D.						
U	1/67	118A	M.E.A.	D. Wright	3/65	PDP-8 MEMORY			
V	1/67	124	M.E.A.	CHK'D.					
W	11/67	198	D.W.	N. Rheault	3/65				
Y	11/67	201	F.E.	ENG.					
Z	8/68	8M001	J.O.	E. DeCastro	5/65				
AA	8/29/68	8-001	R.L.	PROJ. ENG.					
AB	1/69	8-00003	M.A.	E. DeCastro	5/65				
AC	6/69	8M-00003	M.A.	PROD.					
AD	6/69	8M-00004	M.A.	E. DeCastro	5/65				
AE	6/70	8M-00005	J.M.	FIRST USED ON					

SCALE	A ML	NUMBER	REV.	AE
SHEET OF		-8M-0		
		DIST.		



SECTION B-B
SCALE: 1/1



NOTES:

* INDICATES OPTION		
4 NYLON WASHER 5/16 I.D. X 7/8 O.D. X 1/16 THK		25
1 HINGED DOOR (LEFT)	MA-E-8-0-24	24
1 HINGED DOOR (RIGHT)	MA-D-8-0-23	23
1 HANDLE (LEFT)	MD-C-8-0-23-0-3	22
1 HANDLE (RIGHT)	MD-C-8-0-23-0-3	21
6 PHILLIPS FLAT HD. MACH. SCREW #10-32 X 5/8 LG. SST.		20
1 PDF-8 SUB ASSY	A-PL-8-0-1-4	19
10 INTERNAL TOOTH LOCK WASHER #10 HOLE		18
4 INTERNAL TOOTH LOCK WASHER #6 HOLE		17
1 WINGED TABLE ASSY. (FLOOR MODEL)	MA-D-8-0-45	16
1 AIR FILTER 7/16 THK. 17 9/16 SQUARE		15
4 PHILLIPS TRUSS HEAD MACH. SCREW #10-32 X 1 3/8 LG. SST.		14
1 UPPER FRAME		13
1 PHILLIPS TRUSS HEAD MACH. SCREW #10-32 X 5/8 LG. SST.		12
1 WASHER 5/32 I.D. X 1/4 O.D.		11
1 LEVELER W/KEY ROBERT L. MILLER		10
1 LOWER FRAME WELDMENT	MWA-E-8-0-1-1	9
6 PHILLIPS TRUSS HEAD MACH. SCREW #10-32 X 5/8 LG. SST.		8
1 708 POWER SUPPLY	MA-D-708-0-1	7
1 SIDE COVER (RIGHT)	MAD-D-8-0-42	6
1 TOP COVER (RIGHT)	MD-E-8-0-1-0-1	5
1 TOP COVER (LEFT)	MD-E-8-0-1-0-2	4
1 SIDE COVER (LEFT)	MAD-D-8-0-43	3
1 CONTROL PANEL	MA-E-8-0-21	2
1 FILTER COVER PANEL	MD-D-8-0-1-0-3	1
QTY.	DESCRIPTION	DRWG. NO. ITEM NO.

REV. LTR.	A
REVISIONS	* 2672 EXT. CHGS. SEE PREV. REV. 7-7-66
CHK	

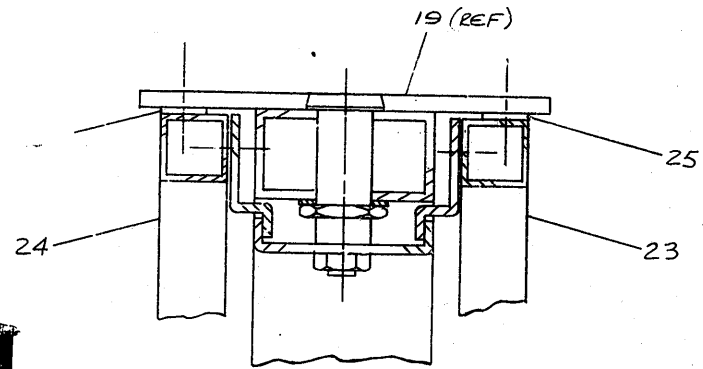
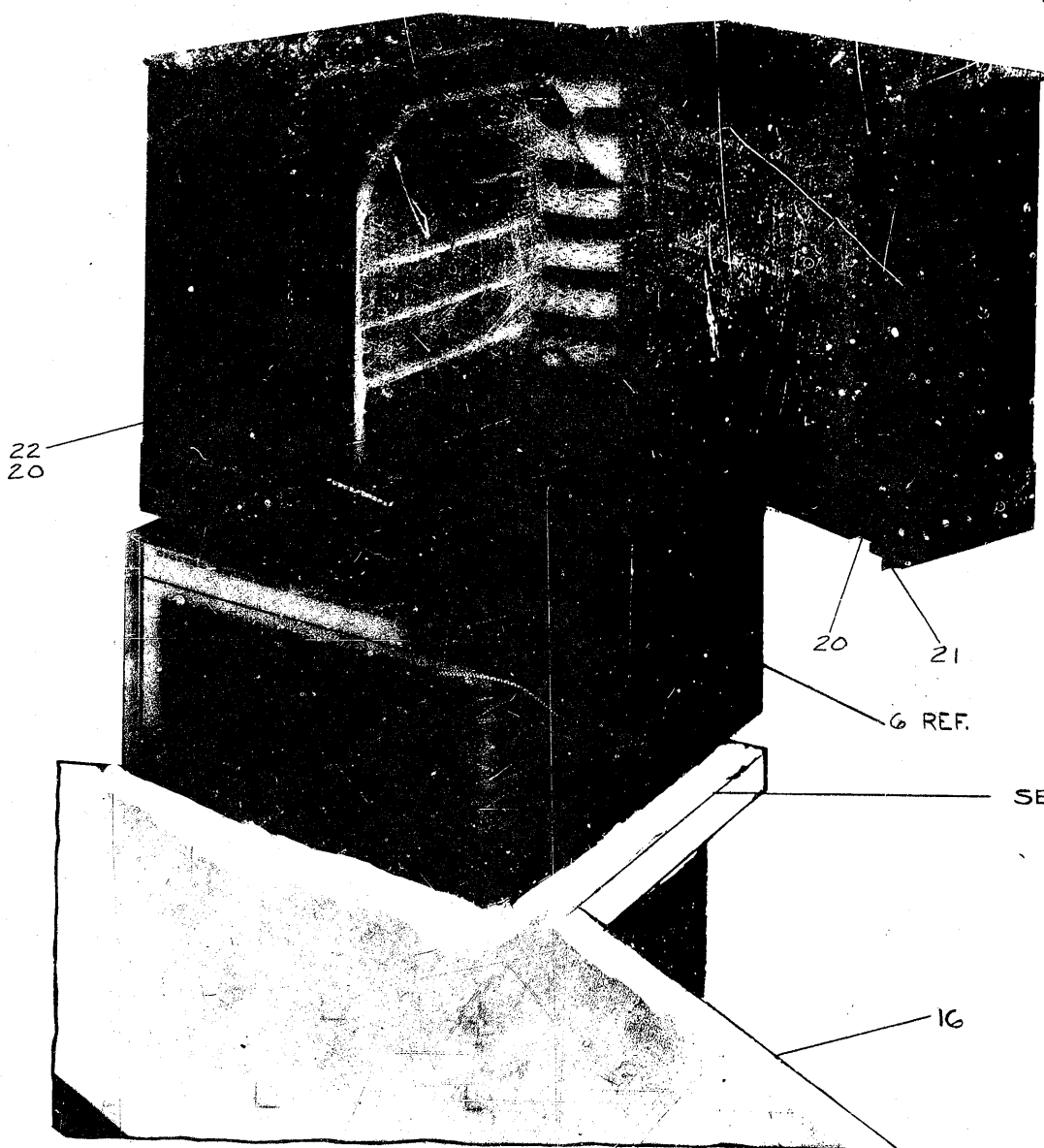
HOLE LEGEND					
SIZE	QTY	SIZE	QTY	SIZE	QTY
G		A			
H		B			
J		C			
K		D			
L		E			
M		F			

UNLESS OTHERWISE SPECIFIED GRINDING-IRRESPECTIVE OF THE LAY		
FRACTIONS ±1/64	DECIMALS ±.005	ANGLES ±1/2°
MATERIAL		
ROCKWELL		
SURF TREAT		

FINISH (AFTER FABRICATION)	DATE
STEP 1	4/15/65
2	4/16/65
3	4-16-65
4	4-16-65
5	4-16-65
6	4-16-65

DIGITAL EQUIPMENT CORPORATION
MAYNARD, MASSACHUSETTS

TITLE: PDP-8 TABLE MODEL
FOR: [REDACTED]
SCALE: NONE SHEET 1 OF 2
CODE: MA D-8-0-1
REV LTR: A

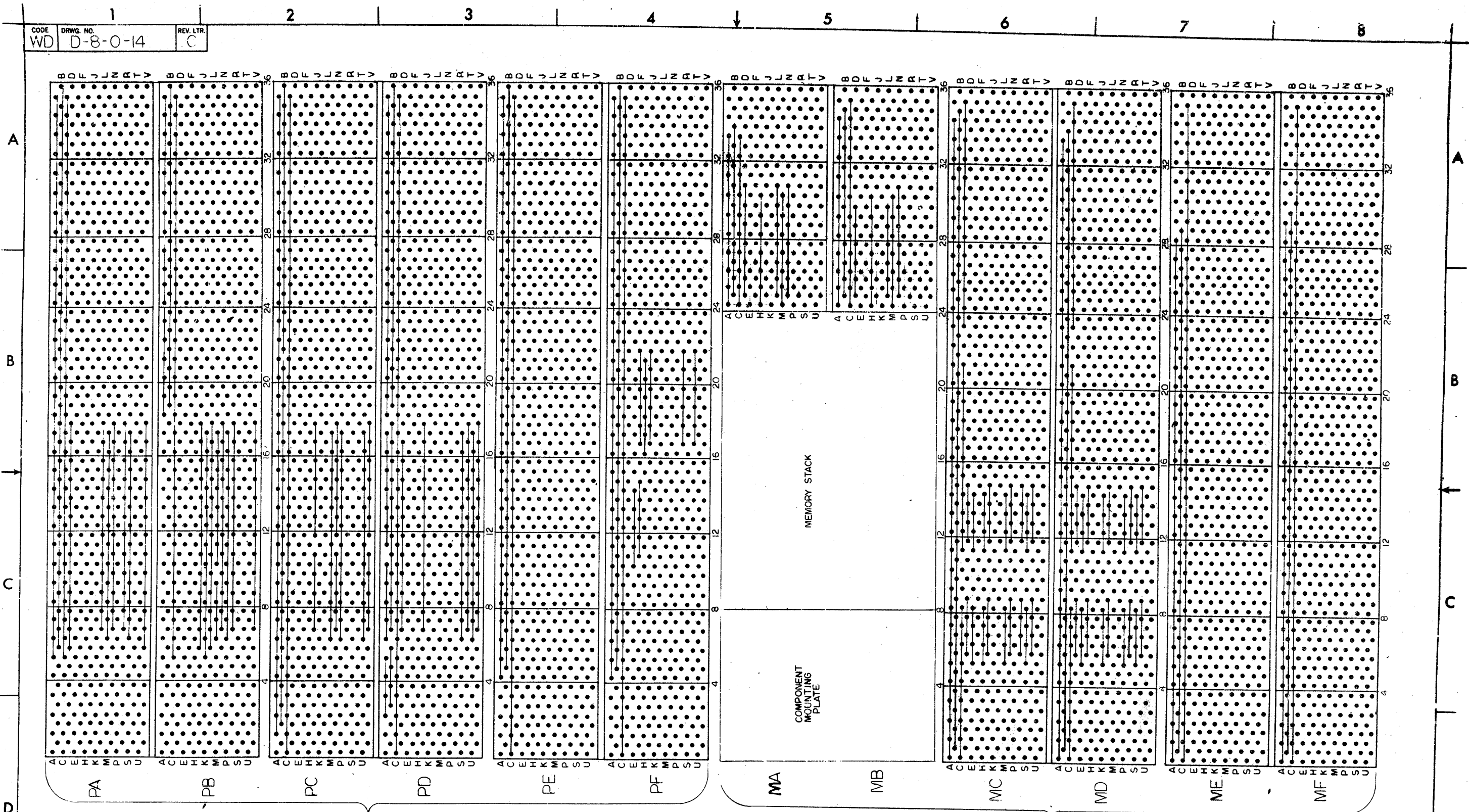


SECTION A-A
SCALE: 1/1

NOTES:
1. TABLE HEIGHT TO BE 26 3/4 FROM FLOOR

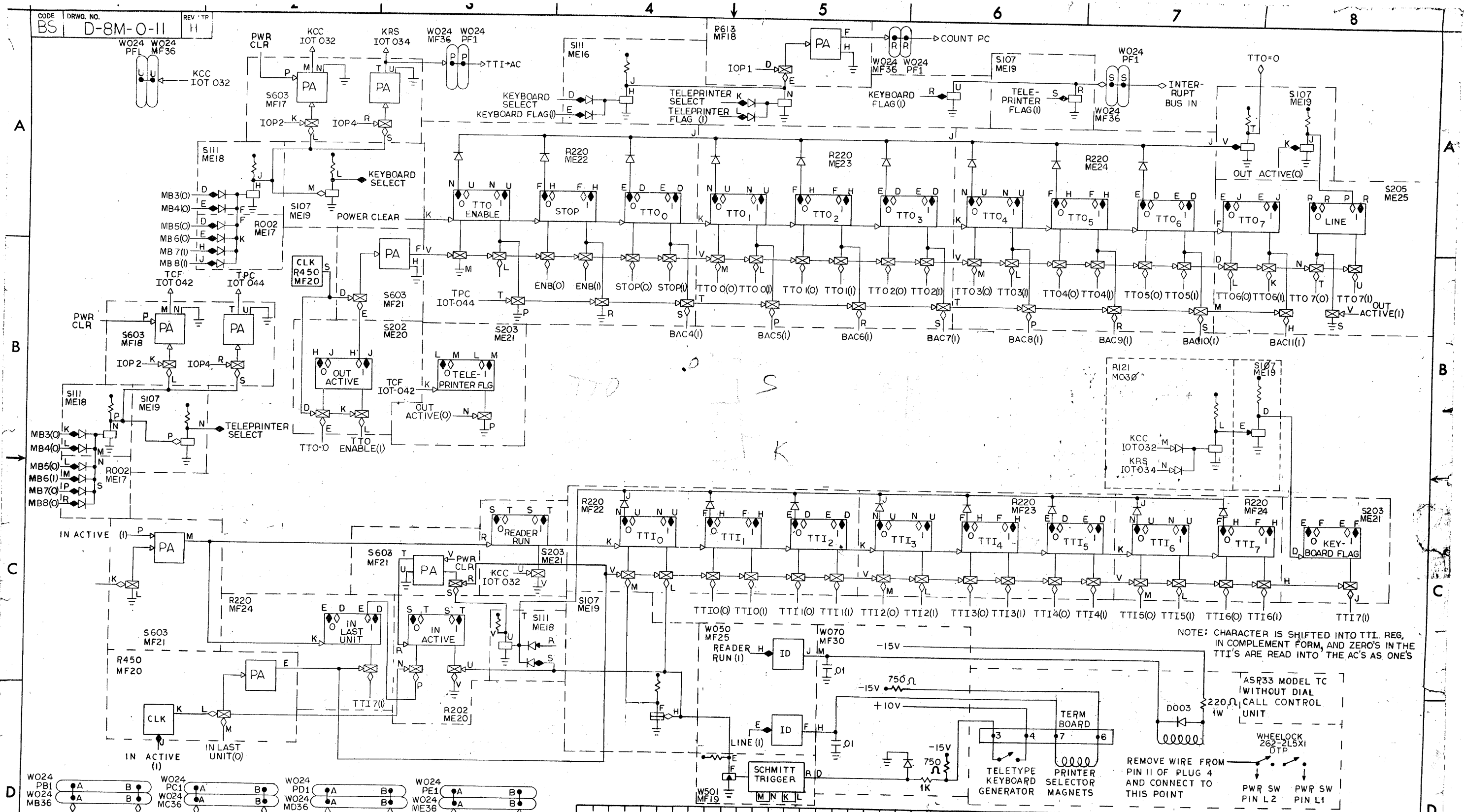
SEE NOTE 1

REV. LTR. A	ECO* #2672 SEE SHEET #1 7-7-66	HOLE LEGEND				UNLESS OTHERWISE SPECIFIED GRINDING-IRRESPECTIVE OF THE LAY ✓ MICROINCHES TOLERANCES			FINISH (AFTER FABRICATION)		DRAWN 4/15/65		DATE		TITLE PDP-8 TABLE MODEL
		SIZE	QTY	SIZE	QTY	FRACTIONS ± 1/64	DECIMALS ± .008	ANGLES ± 1/2°	STEP 1	DATE	DATE	DATE	DATE	DESCRIPTION	
		G		A					2						
		H		B					3						
		J		C					4						
		K		D					5						
		L		E					6						
		M		F											
						MATERIAL		ROCKWELL		SURF TREAT		EQUIPMENT CORPORATION MAYNARD, MASSACHUSETTS		FOR	
												ASSY NO.		CODE MA D-8-0-1	
												SCALE NONE		REV LTR A	
												SHEET 2 OF 2		DIST.	



7006143
(C.P.)

<table border="1" style="width: 100%; border-collapse: collapse;"> <tr> <td style="width: 10%;">REV. LTR.</td> <td style="width: 10%;">NO.</td> <td style="width: 10%;">DATE</td> <td style="width: 10%;">ENG.</td> </tr> <tr> <td style="text-align: center;">A</td> <td style="text-align: center;">4</td> <td style="text-align: center;">7-2</td> <td style="text-align: center;">P</td> </tr> <tr> <td style="text-align: center;">B</td> <td style="text-align: center;">6</td> <td style="text-align: center;">7-14</td> <td style="text-align: center;">P</td> </tr> <tr> <td style="text-align: center;">C</td> <td style="text-align: center;">19</td> <td style="text-align: center;">10-8-64</td> <td style="text-align: center;">P</td> </tr> <tr> <td style="text-align: center;">D</td> <td style="text-align: center;">0000</td> <td style="text-align: center;">-</td> <td style="text-align: center;">-</td> </tr> </table>		REV. LTR.	NO.	DATE	ENG.	A	4	7-2	P	B	6	7-14	P	C	19	10-8-64	P	D	0000	-	-	(MEM) 7006142 DATE 10-15-64 CHECKED [Signature] DATE 1/27/65 ENG [Signature]		 DIGITAL EQUIPMENT CORPORATION MAYNARD, MASSACHUSETTS	TITLE BUS BAR FOR POWER AND LOGIC WIRING FOR	
		REV. LTR.	NO.	DATE	ENG.																					
A	4	7-2	P																							
B	6	7-14	P																							
C	19	10-8-64	P																							
D	0000	-	-																							
REVISIONS PROJ. ENG. DATE PROD. DATE		ASSY. NO. SHEET OF 	CODE WD DRWG. NO. D-8-0-14 REV. LTR. D DIST.																							

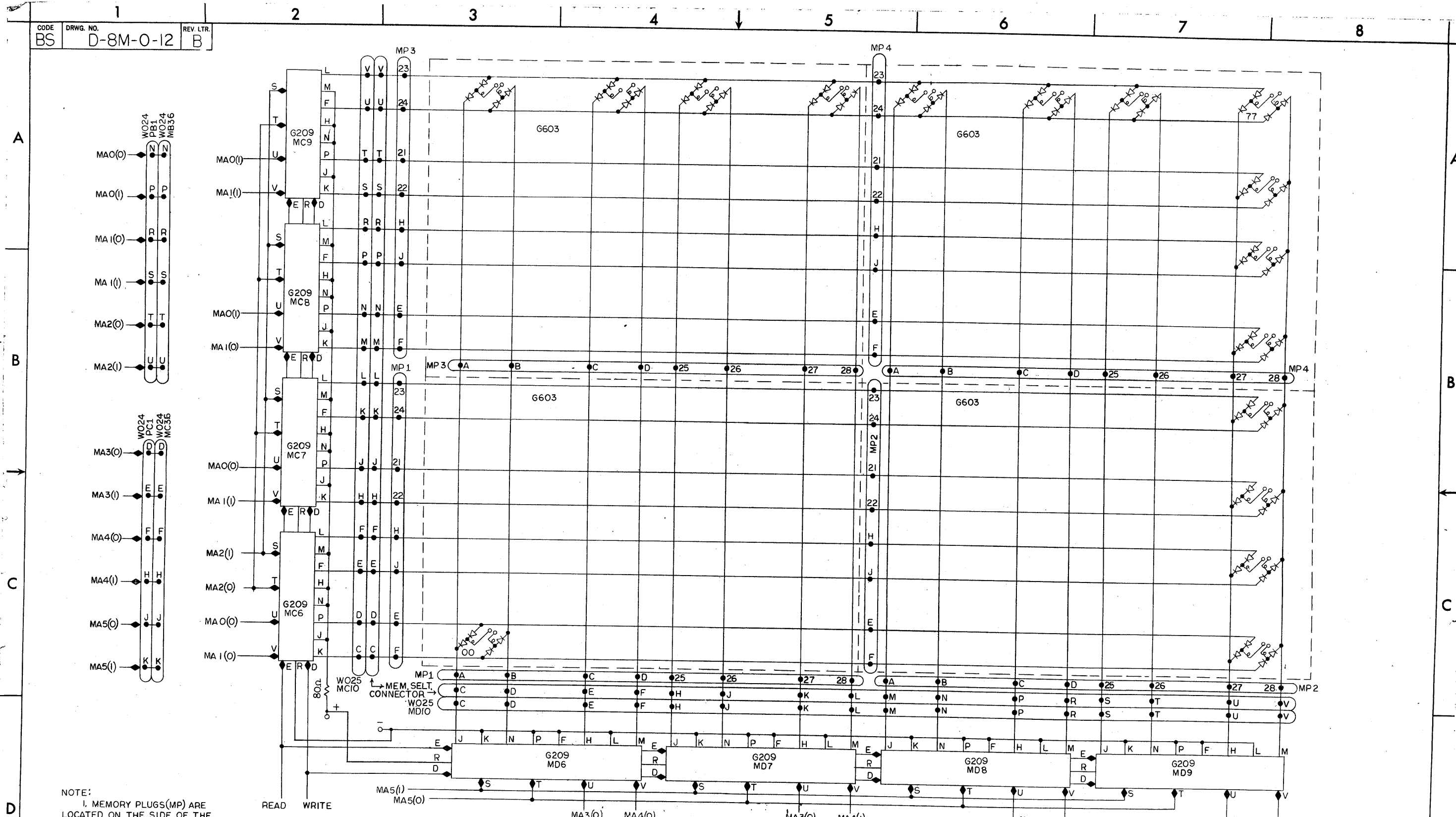


REV.	NO.	DATE	BY	CHKD.	DATE	REVISIONS
1	00005	7-18	W. J. G.			
2	00003	7-18	W. J. G.			
3	124	7-18	W. J. G.			
4	82	7-18	W. J. G.			
5	72	7-18	W. J. G.			
6	11	7-18	W. J. G.			
7	11	7-18	W. J. G.			
8	11	7-18	W. J. G.			

digital EQUIPMENT CORPORATION MAYNARD, MASSACHUSETTS	TELEPRINTER TITLE FOR ASSY NO SHEET OF
DRAWN: <i>B. Wright</i> CHECKED: <i>W. J. G.</i> ENG: <i>F. J. G.</i> PROJ. ENG: <i>W. J. G.</i> PROD: <i>W. J. G.</i>	DATE: 10-19-64 DATE: 7/18 DATE: 7/18 DATE: 7/18 DATE: 7/18
REMOVE WIRE FROM PIN 11 OF PLUG 4 AND CONNECT TO THIS POINT WHEELLOCK 262-2L5X1 DTP PWR SW PIN L2 PWR SW PIN L1	NOTE: CHARACTER IS SHIFTED INTO TTI REG, IN COMPLEMENT FORM, AND ZERO'S IN THE TTI'S ARE READ INTO THE AC'S AS ONE'S

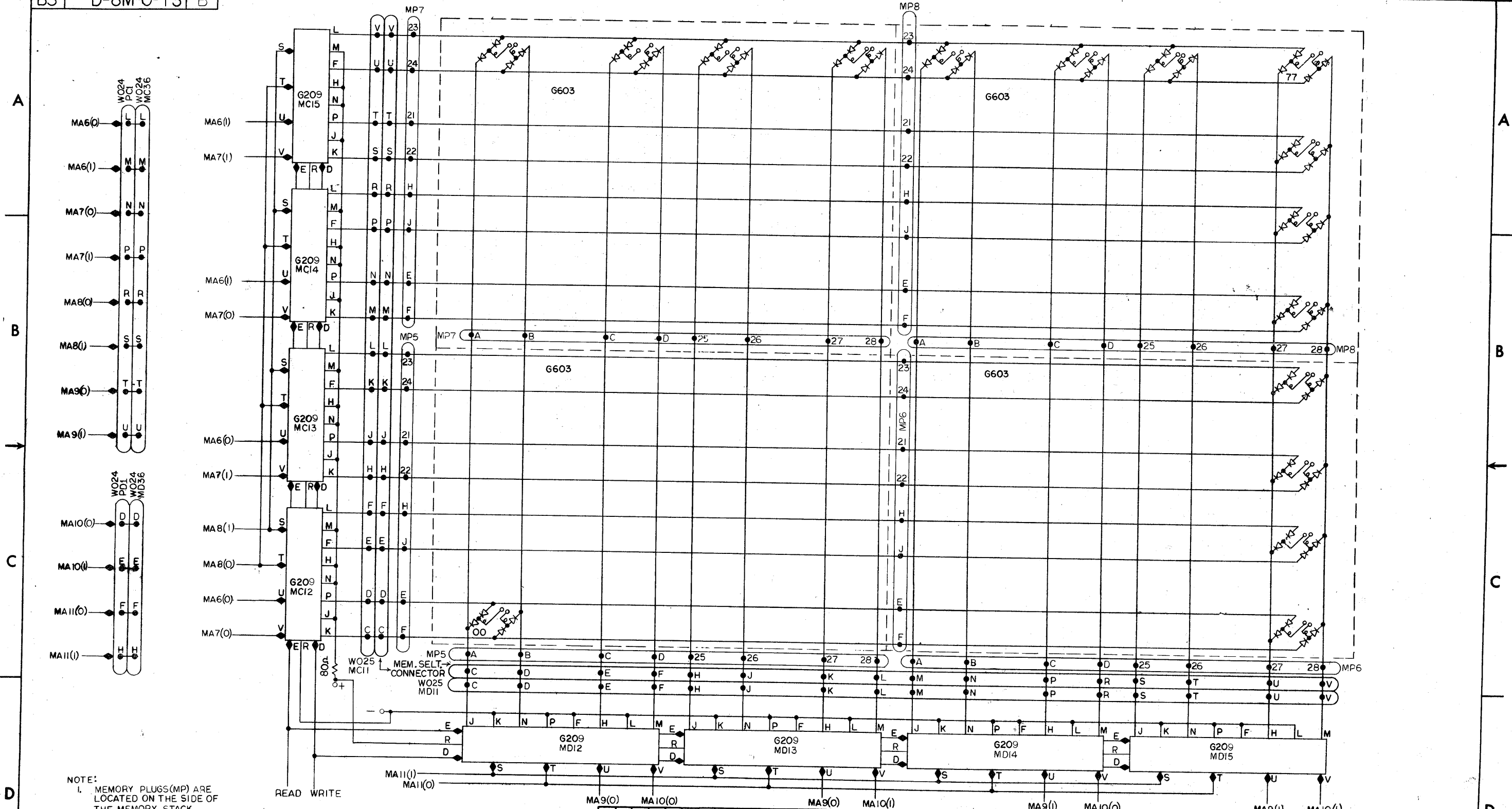
3 - GRN
 4 - RED
 6 - VEL
 7 - BLK
 - RELAY (GRN)
 + RELAY (RED)

M. - LOCK
 3 - RLY 2 + RLY 4
 4



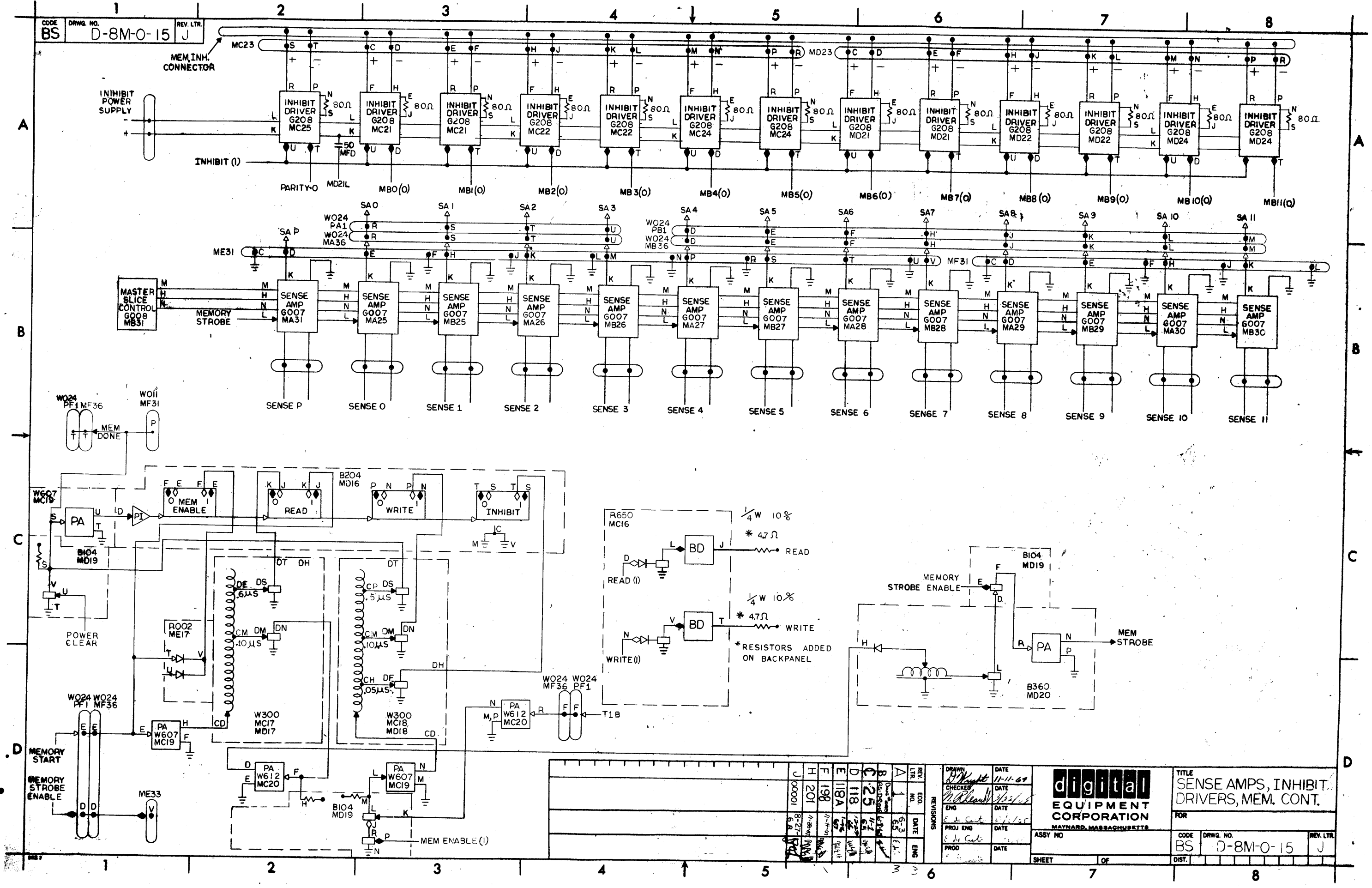
NOTE:
1. MEMORY PLUGS(MP) ARE LOCATED ON THE SIDE OF THE MEMORY STACK.

REV. LTR. NO. 6 ENG. DATE 6-5	DRAWN: <i>D. Wright</i> DATE: 10-20-64 CHECKED: <i>[Signature]</i> DATE: 11-2-64 ENG. DATE: 11-2-64 PROJ. ENG. DATE: 11-1-64 PROD. DATE: 11-1-64	digital EQUIPMENT CORPORATION MAYNARD, MASSACHUSETTS	TITLE X AXIS SELECTION	
	REVISIONS		FOR	
	ASSY NO.		CODE BS DRWG. NO. D-8M-0-12 REV. LTR. B	
	SHEET OF		DIST.	

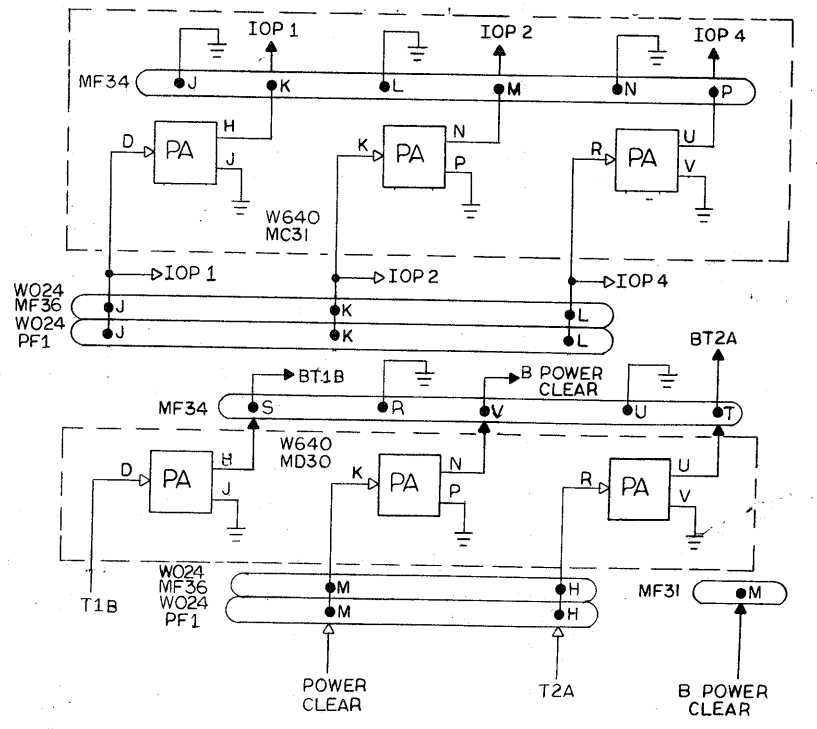
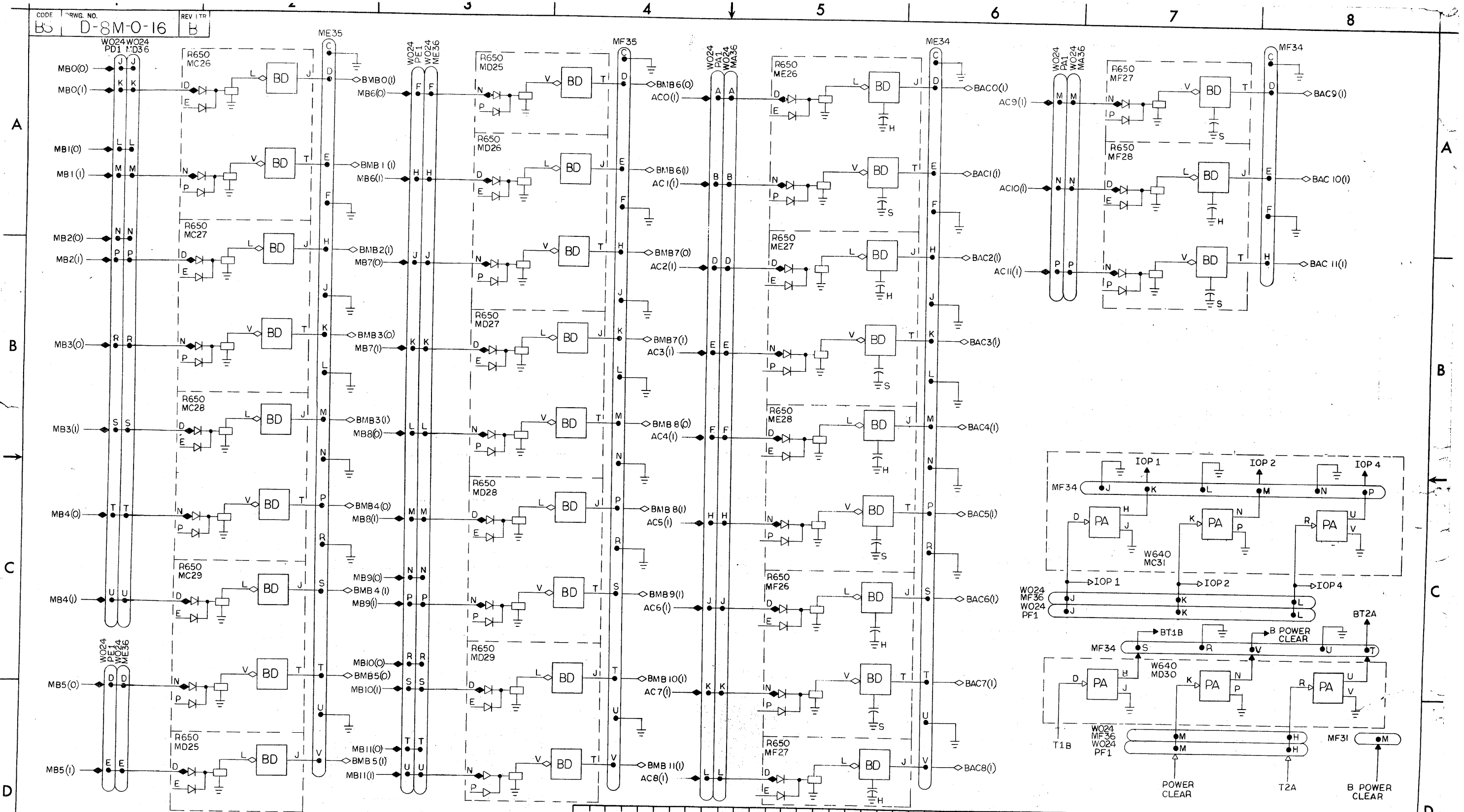


NOTE:
1. MEMORY PLUGS(MP) ARE LOCATED ON THE SIDE OF THE MEMORY STACK.

REVISIONS A B C D E F G H I J K L M N O P Q R S T U V W X Y Z		DRAWN DATE CHECKED DATE ENG DATE PROJ ENG DATE PROD DATE	DATE 10-20-65 3/22/65 5/16/65 6/16/65 8/16/65	digital EQUIPMENT CORPORATION MAYNARD, MASSACHUSETTS	TITLE Y AXIS SELECTION FOR ASSY NO CODE BS	DRWG. NO. D-8M-0-13 REV. LTR B
SHEET 7 OF 8		DIST.		DIST.		



REV. LTR.		DATE		 digital EQUIPMENT CORPORATION MAYNARD, MASSACHUSETTS	TITLE	
J		11-11-69			SENSE AMPS, INHIBIT. DRIVERS, MEM. CONT.	
CODE		DATE		ASSY NO.	FOR	
BS		11/11/69			CODE	
DRAWING NO.		DATE		SHEET	DRWG. NO.	
D-8M-0-15		11/11/69		OF	D-8M-0-15	
REV. LTR.		DATE		DIST.		
J		11/11/69				



REV. LTR.		DRAWN: <i>D. Wright</i>		DATE: 11-30-64		TITLE: IN-OUT BUFFERS	
NO.		CHECKED:		DATE:		FOR:	
ECO.		ENG.		DATE:		ASSY NO.	
DATE:		PROJ. ENG.		DATE:		CODE: BS	
DATE:		PROD.		DATE:		DRWG. NO.: D-8M-0-16	
ENG.		REV. LTR.: B		SHEET: 1		OF: 1	

DRWG NO

K-8M-0-18

REVLTR

W

REVISIONS			
REV LTR	ECO NO	DATE	ENG
V	00003	6-4-69	W
W	00004	6-11-69	W

<table border="1"> <tr><td>DRAWN</td><td>DATE</td></tr> <tr><td>D. WRIGHT</td><td>12-7-64</td></tr> <tr><td>CHECKED</td><td>DATE</td></tr> <tr><td>N. RHEAULT</td><td>9-9-65</td></tr> <tr><td>ENG</td><td>DATE</td></tr> <tr><td>DE CASTRO</td><td>5-6-65</td></tr> <tr><td>PROJ ENG</td><td>DATE</td></tr> <tr><td>DE CASTRO</td><td>5-6-65</td></tr> <tr><td>PROD</td><td>DATE</td></tr> <tr><td>DE CASTRO</td><td>5-6-65</td></tr> </table>	DRAWN	DATE	D. WRIGHT	12-7-64	CHECKED	DATE	N. RHEAULT	9-9-65	ENG	DATE	DE CASTRO	5-6-65	PROJ ENG	DATE	DE CASTRO	5-6-65	PROD	DATE	DE CASTRO	5-6-65	<p>digital EQUIPMENT CORPORATION MAYNARD, MASSACHUSETTS</p>	<p>TITLE WIRING LIST PDP 8 Ø (MEM)</p> <p>FOR TAPE # FILE #</p>	<table border="1"> <tr> <td>ASSY NO</td> <td>SIZE</td> <td>CODE</td> <td>DWG. NO.</td> <td>REV LTR</td> </tr> <tr> <td></td> <td>K</td> <td>WL</td> <td>8M-0-18</td> <td>W</td> </tr> </table>	ASSY NO	SIZE	CODE	DWG. NO.	REV LTR		K	WL	8M-0-18	W
DRAWN	DATE																																
D. WRIGHT	12-7-64																																
CHECKED	DATE																																
N. RHEAULT	9-9-65																																
ENG	DATE																																
DE CASTRO	5-6-65																																
PROJ ENG	DATE																																
DE CASTRO	5-6-65																																
PROD	DATE																																
DE CASTRO	5-6-65																																
ASSY NO	SIZE	CODE	DWG. NO.	REV LTR																													
	K	WL	8M-0-18	W																													
SCALE	SHEET	OF	DIST.																														

Pinout table for MEMORY UML with columns 1-36 and rows MA, MB, MC, MD, ME, MF. Includes component descriptions like 'COMPONENT PLATE CONTAINING INHIBIT DRIVER RESISTORS' and 'MEMORY STACK'.

* USED ONLY WITH 163 MEMORY EXTENSION CONTROL

Δ USED ONLY WITH 168 MEMORY PARITY OPTION

↓ USED ONLY WITH KTOG

Engineering drawing header and title block for MEMORY UML, including fields for DRAWN, DATE, TITLE, and EQUIPMENT CORPORATION.

COLOR	NAME	PIN	LOCATION	LOCATION	REMARKS
		A			BLANK
		B			BLANK
W/BLK	GND	C	ME34		
W/BRN	BAC 0 (1)	D			
W/RED	GND	X			
W/ORN	BAC 1 (1)	E			
W/YEL	GND	F			
W/GRN	BAC 2 (1)	H			
W/BLU	GND	J			
W/VIO	BAC 3 (1)	K			
W/GRY	GND	L			
WHT	BAC 4 (1)	M			
W/BLK	GND	N			
W/BRN	BAC 5 (1)	P			
W/RED	GND	R			
W/ORN	BAC 6 (1)	S			
W/YEL	GND	X			
W/GRN	BAC 7 (1)	T			
W/BLU	GND	U			
W/VIO	BAC 8 (1)	V	ME34		
W/GRY	GND	X			

COLOR	NAME	PIN	LOCATION	LOCATION	REMARKS
		A			BLANK
		B			BLANK
W/BLK	GND	C	MF34		
W/BRN	BAC 9 (1)	D			
W/RED	GND	X			
W/ORN	BAC 10 (1)	E			
W/YEL	GND	F			
W/GRN	BAC 11 (1)	H			
W/BLU	GND	J			
W/VIO	IOP 1	K			
W/GRY	GND	L			
WHT	IOP 2	M			
W/BLK	GND	N			
W/BRN	IOP 4	P			
W/RED	GND	R			
W/ORN	BT 1B	S			
W/YEL	GND	X			
W/GRN	T 2	T			
W/BLU	GND	U			
W/VIO	PWR CLR	V			
W/GRY	GND	X	MF34		

REV. LTR.	ECO. NO.	DATE	ENG.
A	Dwg No. WAS CL-A-8-0-35	6-7-65	E. de la...
B	00001	8-21-65	F. de la...

digital
EQUIPMENT CORPORATION
MAYNARD, MASSACHUSETTS

CABLE CONNECTOR

TITLE: AC BITS & IOP'S

DRAWN: 3-9-65
P.J. Priest

CHECKED: *[Signature]* 3/21/65

ENG. *[Signature]*

PROD. *[Signature]* 5/6/65

FOR: _____

CODE CL: A-8M-0-35

REV. B

SHEET 1 OF 2

DIST. _____

REV. LTR.	ECO. NO.	DATE	ENG.
A	Dwg No. WAS CL-A-8-0-35	6-7-65	E. de la...

digital
EQUIPMENT CORPORATION
MAYNARD, MASSACHUSETTS

CABLE CONNECTOR

TITLE: AC BITS & IOP'S

DRAWN: 3-9-65
P.J. Priest

CHECKED: *[Signature]* 3/21/65

ENG. *[Signature]*

PROD. _____

FOR: _____

CODE CL: A-8M-0-35

REV. B

SHEET 2 OF 2

DIST. _____

COLOR	NAME	PIN	LOCATION	LOCATION	REMARKS
		A			BLANK
		B			BLANK
W/BLK	GND	C	ME35		
W/BRN	BMB 0 (1)	D			
W/RED	GND	X			
W/ORN	BMB 1 (1)	E			
W/YEL	GND	F			
W/GRN	BMB 2 (1)	H			
W/BLU	GND	J			
W/VIO	BMB 3 (0)	K			
W/GRY	GND	L			
WHT	BMB 3 (1)	M			
W/BLK	GND	N			
W/BRN	BMB 4 (0)	P			
W/RED	GND	R			
W/ORN	BMB 4 (1)	S			
W/YEL	GND	X			
W/GRN	BMB 5 (0)	T			
W/BLU	GND	U			
W/VIO	BMB 5 (1)	V			
W/GRY	GND	X	ME35		


COLOR	NAME	PIN	LOCATION	LOCATION	REMARKS
		A			BLANK
		B			BLANK
W/BLK	GND	C	MF35		
W/BRN	BMB 6 (0)	D			
W/RED	GND	X			
W/ORN	BMB 6 (1)	E			
W/YEL	GND	F			
W/GRN	BMB 7 (0)	H			
W/BLU	GND	J			
W/VIO	BMB 7 (1)	K			
W/GRY	GND	L			
WHT	BMB 8 (0)	M			
W/BLK	GND	N			
W/BRN	BMB 8 (1)	P			
W/RED	GND	R			
W/ORN	BMB 9 (1)	S			
W/YEL	GND	X			
W/GRN	BMB 10 (1)	T			
W/BLU	GND	U			
W/VIO	BMB 11 (1)	V			
W/GRY	GND	X	MF35		


REV. LTR.	ECO. NO.	DATE	ENG.	digital EQUIPMENT CORPORATION MAYNARD, MASSACHUSETTS	CABLE CONNECTOR			
A	DWG. No. WAS CL-A-8-0-38	6-7-65	B. Priest		TITLE	MB BITS		
				DRAWN	3-9-65	FOR		
				P.J. Priest				
				CHECKED		CODE	DRWG. NO.	REV.
				<i>[Signature]</i>		CL	A-8M-0-38	A
				ENG.		SHEET	1 OF 2	
				PROD.		DIST.		
				<i>E de Castro 5/21/65</i>				

REV. LTR.	ECO. NO.	DATE	ENG.	digital EQUIPMENT CORPORATION MAYNARD, MASSACHUSETTS	CABLE CONNECTOR			
A	DWG. No. WAS CL-A-8-0-38	6-7-65			TITLE	MB BITS		
				DRAWN	3-9-65	FOR		
				P.J. Priest				
				CHECKED		CODE	DRWG. NO.	REV.
				<i>[Signature]</i>		CL	A-8M-0-38	A
				ENG.		SHEET	2 OF 2	
				PROD.		DIST.		

COLOR	NAME	PIN	LOCATION	LOCATION	REMARKS
		A			BLANK
		B			BLANK
W/BLK	GND	C	ME 31		
W/BRN	SA P	D	↑		
W/RED	GND	X			
W/ORN	SA 0	E			
W/YEL	GND	F			
W/GRN	SA 1	H			
W/BLU	GND	J			
W/VIO	SA 2	K			
W/GRY	GND	L			
WHT	SA 3	M			
W/BLK	GND	N			
W/BRN	SA 4	P			
W/RED	GND	R			
W/ORN	SA 5	S			
W/YEL	GND	X			
W/GRN	SA 6	T			
W/BLU	GND	U			
W/VIO	SA 7	V	↓		
W/GRY	GND	X	ME 31		

COLOR	NAME	PIN	LOCATION	LOCATION	REMARKS
		A			BLANK
		B			BLANK
W/BLK	GND	C	MF 31		
W/BRN	SA 8	D	↑		
W/RED	GND	X			
W/ORN	SA 9	E			
W/YEL	GND	F			
W/GRN	SA 10	H			
W/BLU	GND	J			
W/VIO	SA 11	K			
W/GRY	GND	L			
WHT	PWR CLR	M			
W/BLK	GND	N			
W/BRN		P			
W/RED	GND	R			
W/ORN		S			
W/YEL	GND	X			
W/GRN		T			
W/BLU	GND	U			
W/VIO		V	↓		
W/GRY	GND	X	MF 31		

REV. LTR.	ECO. NO.	DATE	ENG.	 digital EQUIPMENT CORPORATION MAYNARD, MASSACHUSETTS	SIGNAL CABLE CONNECTOR			
A	Dwa Nowas CL-A-8-0-40	6-8-65	<i>E. Priest</i>		TITLE SENSE AMPS			
					DRAWN P.J. Priest 3-9-65			
					FOR	CODE	DRWG. NO.	REV.
					CL	A-8M-0-40	A	
					SHEET 1 OF 2			
				PROD.	DIST.			


REV. LTR.	ECO. NO.	DATE	ENG.	 digital EQUIPMENT CORPORATION MAYNARD, MASSACHUSETTS	SIGNAL CABLE CONNECTOR			
A	Dwa Nowas CL-A-8-0-40	6-8-65			TITLE SENSE AMPS			
					DRAWN 3-9-65 P.J. Priest			
					FOR	CODE	DRWG. NO.	REV.
					CL	A-8M-0-40	A	
					SHEET 2 OF 2			
				PROD.	DIST.			

COLOR	NAME	PIN	LOCATION	LOCATION	REMARKS
	+10V	A	MF30		BLANK
	-15V	B	↑		BLANK
W/BLK	GND	C			
W/BRN	KEY BOARD GENERATOR	D			
W/RED	GND	⊗			
W/ORN		E			
W/YEL	GND	F			
W/GRN	SELECTOR MAGNETS	H			
W/BLU	GND	J			
W/VIO		K			
W/GRY	GND	L			
WHT	POWER SWITCHES	M			
W/BLK	GND	N			
W/BRN		P			
W/RED	GND	R			
W/ORN		S			
W/YEL	GND	⊗			
W/GRN		T			
W/BLU	GND	U			
W/VIO		V			
W/GRY	GND	⊗	MF30		

REV. LTR.	ECO. NO.	DATE	ENG.	digital EQUIPMENT CORPORATION MAYNARD, MASSACHUSETTS	IN-OUT CABLE CONNECTOR		
A	Dwg. No. was CL-A-8-0-44	6-9-65	<i>E. de la Torre</i>		TITLE	TELE PRINTER	
				DRAWN	3/4/65	FOR	
					S CLIPPINGER		
				CHECKED	<i>E. de la Torre</i>	CODE CL	DRWG. NO. A-8M-0-14
				ENG.	<i>E. de la Torre</i>	REV.	A
				PROD.	<i>E. de la Torre</i>	SHEET	OF
					5/6/65	DIST.	

JACK <input type="checkbox"/>	PLUG <input checked="" type="checkbox"/>	LOCATION, LENGTH, ROUTE
FEMALE <input type="checkbox"/>	MALE <input checked="" type="checkbox"/>	MA 35

COLOR	LOCATION	PIN	NAME	REMARKS
W/BLK (X)	MA 35	A	DATA FIELD 0	
W/BRN (Z)		B	DATA FIELD 1	
W/RED (R)		C	DATA FIELD 2	
W/ORN (O)		D	INST FIELD 0	
W/YEL (Y)		E	INST FIELD 1	
W/GRN (N)		F	INST FIELD 2	
W/BLU (B)		H		
W/VIO (V)		J		
W/GRY (G)		K		
WHT (W)		L		
W/BLK (X)		M		
W/BRN (Z)		N		
W/RED (R)		P	DATA FIELD SR 0	
W/ORN (O)		R	DATA FIELD SR 1	
W/YEL (Y)		S	DATA FIELD SR 2	
W/GRN (N)		T	INST FIELD SR 0	
W/BLU (B)		U	INST FIELD SR 1	
W/VIO (V)	MA 35	V	INST FIELD SR 2	
W/GRY (G)		W		
WHT (W)		X		
		Y		
		Z		

DRAWN P.J. Priest 3-9-65		 digital EQUIPMENT CORPORATION MAYNARD, MASSACHUSETTS	INDICATOR CONNECTOR	
CHECKED <i>[Signature]</i> 3/24/65			TITLE INDICATOR CONNECTOR MA 35	
ENG <i>[Signature]</i>				
				APPV
				ECO. NO.
				REV. LTR.
				DWG NO
				A-8M-0-39
				REV. LTR.
				A
				SHEET
				OF
				CODE
				CL

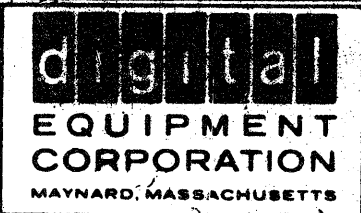
JACK PLUG LOCATION, LENGTH, ROUTE
 FEMALE MALE PA01 & MA36

JACK PLUG LOCATION, LENGTH, ROUTE
 FEMALE MALE PB01 & MB36

COLOR	PIN	PIN	NAME	REMARKS
W/BLK (X)	PA01A	MA36A	AC0(1)	
W/BRN (Z)	PA01B	MA36B	AC1(1)	
W/RED (R)	↑ C	↑ C	GND	
W/ORN (O)	D	D	AC2(1)	
W/YEL (Y)	E	E	3(1)	
W/GRN (N)	F	F	4(1)	
W/BLU (B)	H	H	5(1)	
W/VIO (V)	J	J	6(1)	
W/GRY (G)	K	K	7(1)	
WHT (W)	L	L	8(1)	
W/BLK (X)	M	M	9(1)	
W/BRN (Z)	N	N	10(1)	
W/RED (R)	P	P	AC11(1)	
W/ORN (O)	R	R	SA 0	
W/YEL (Y)	S	S	↑ 1	
W/GRN (N)	T	T	↓ 2	
W/BLU (B)	↓ U	↓ U	SA 3	
W/VIO (V)	PA01V	MA36V	GND	

COLOR	PIN	PIN	NAME	REMARKS
W/BLK (X)	PB01A	MB36A	TTI 0(1)	
W/BRN (Z)	↑ B	↑ B	TTI 1(1)	
W/RED (R)	C	C	GND	
W/ORN (O)	D	D	SA 4	
W/YEL (Y)	E	E	↑ 5	
W/GRN (N)	F	F	6	
W/BLU (B)	H	H	7	
W/VIO (V)	J	J	8	
W/GRY (G)	K	K	9	
WHT (W)	L	L	↓ 10	
W/BLK (X)	M	M	SA 11	
W/BRN (Z)	N	N	MA 0(0)	
W/RED (R)	P	P	MA 0(1)	
W/ORN (O)	R	R	MA 1(0)	
W/YEL (Y)	S	S	MA 1(1)	
W/GRN (N)	T	T	MA 2(0)	
W/BLU (B)	↓ U	↓ U	MA 2(1)	
W/VIO (V)	PB01V	MB36V	GND	

DRAWN 3/15/65
 CHECKED
 ENG



INTERCHASSIS CONNECTOR
 TITLE
 PROCESSOR & MEMORY CHASSIS CONNECTORS

DRAWN 3/15/65
 S Clippinger
 CHECKED
 ENG



INTERCHASSIS CONNECTOR
 TITLE
 PROCESSOR & MEMORY CHASSIS CONNECTOR

APPLY	6/3/65	ECO. NO.	00001
REV. LTR.	Rev. A	REV. LTR.	B

DWG NO A-8-0-30
 SHEET 1 OF 7
 REV. LTR. B
 CODE CA

APPLY	6/3/65	ECO. NO.	00001
REV. LTR.	Rev. A	REV. LTR.	B

DWG NO A-8-0-30
 SHEET 2 OF 7
 REV. LTR. B
 CODE CL

JACK PLUG LOCATION, LENGTH, ROUTE
 FEMALE MALE PCØ1 & MC36

COLOR	PIN	PIN	NAME	REMARKS
W/BLK (X)	PCØ1A	MC36A	TTI2(1)	
W/BRN (Z)	↑ B	↑ B	TTI3(1)	
W/RED (R)	C	C	GND	
W/ORN (O)	D	D	MA 3(0)	
W/YEL (Y)	E	E	↑ 3(1)	
W/GRN (N)	F	F	4(0)	
W/BLU (B)	H	H	4(1)	
W/VIO (V)	J	J	5(0)	
W/GRY (G)	K	K	5(1)	
WHT (W)	L	L	6(0)	
W/BLK (X)	M	M	6(1)	
W/BRN (Z)	N	N	7(0)	
W/RED (R)	P	P	7(1)	
W/ORN (O)	R	R	8(0)	
W/YEL (Y)	S	S	8(1)	
W/GRN (N)	T	T	↓ 9(0)	
W/BLU (B)	↓ U	↓ U	MA 9(1)	
W/VIO (V)	PCØ1V	MC36V	GND	

DRAWN 3/15/65
S Clippinger
 CHECKED
 ENG



INTERCHASSIS CONNECTOR
 TITLE
 PROCESSOR & MEMORY
 CHASSIS CONNECTOR

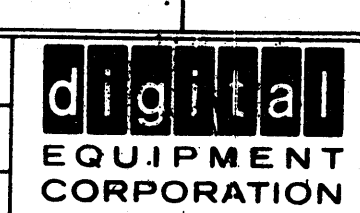
APPV																					
REV. LTR.																					

DWG NO A-8-0-30 REV. LTR. B
 SHEET 3 OF 7 CODE CL

JACK PLUG LOCATION, LENGTH, ROUTE
 FEMALE MALE PDØ1 & MD36

COLOR	PIN	PIN	NAME	REMARKS
W/BLK (X)	PDØ1A	MD36A	TTI 4(1)	
W/BRN (Z)	↑ B	↑ B	TTI 5(1)	
W/RED (R)	C	C	GND	
W/ORN (O)	D	D	MA 10(0)	
W/YEL (Y)	E	E	↑ 10(1)	
W/GRN (N)	F	F	↓ 11(0)	
W/BLU (B)	H	H	MA 11(1)	
W/VIO (V)	J	J	MB 0(0)	
W/GRY (G)	K	K	↑ 0(1)	
WHT (W)	L	L	1(0)	
W/BLK (X)	M	M	1(1)	
W/BRN (Z)	N	N	2(0)	
W/RED (R)	P	P	2(1)	
W/ORN (O)	R	R	3(0)	
W/YEL (Y)	S	S	3(1)	
W/GRN (N)	T	T	↓ 4(0)	
W/BLU (B)	↓ U	↓ U	MB 4(1)	
W/VIO (V)	PDØ1V	MD36V	GND	

DRAWN 3/15/65
S Clippinger
 CHECKED
 ENG



INTERCHASSIS CONNECTOR
 TITLE
 PROCESSOR & MEMORY
 CHASSIS CONNECTOR

APPV																					
REV. LTR.																					

DWG NO A-8-0-30 REV. LTR. B
 SHEET 4 OF 7 CODE CL


JACK PLUG
 FEMALE MALE

LOCATION, LENGTH, ROUTE
 PE01 & ME36

COLOR	PIN	PIN	NAME	REMARKS
W/BLK (X)	PE01A	ME36A	TTI 6(1)	
W/BRN (Z)	↑ B	↑ B	TTI 7(1)	
W/RED (R)	C	C	GND	
W/ORN (O)	D	D	MB 5(0)	
W/YEL (Y)	E	E	↑ 5(1)	
W/GRN (N)	F	F	6(0)	
W/BLU (B)	H	H	6(1)	
W/VIO (V)	J	J	7(0)	
W/GRY (G)	K	K	7(1)	
WHT (W)	L	L	8(0)	
W/BLK (X)	M	M	8(1)	
W/BRN (Z)	N	N	9(0)	
W/RED (R)	P	P	9(1)	
W/ORN (O)	R	R	10(0)	
W/YEL (Y)	S	R	10(1)	
W/GRN (N)	T	T	↓ 11(0)	
W/BLU (B)	↓ U	↓ U	MB 11(1)	
W/VIO (V)	PE01V	ME36V	GND	

DRAWN 3/15/65
 S Clippinger

CHECKED *[Signature]* 3/15/65
 ENG


DIGITAL
 EQUIPMENT CORPORATION
 MAYNARD, MASSACHUSETTS

INTERCHASSIS CONNECTOR
 TITLE
 PROCESSOR & MEMORY CHASSIS CONNECTOR

APPLY																			
ECO. NO.																			
REV. LTR.																			

DWG NO A-8-0-30 REV. LTR. **B**
 SHEET 5 OF 7 CODE CL


JACK PLUG
 FEMALE MALE

LOCATION, LENGTH, ROUTE
 PF01 & MF36

COLOR	PIN	PIN	NAME	REMARKS
W/BLK (X)	PF01A	MF36A	FETCH (F)	
W/BRN (Z)	↑ B	↑ B	B SET	
W/RED (R)	C	C	MEMORY STROBE ENB	
W/ORN (O)	E	E	MEM START	
W/YEL (Y)	F	F	T 1B	
W/GRN (N)	H	H	T 2A	
W/BLU (B)	J	J	IOP 1	
W/VIO (V)	K	K	IOP 2	
W/GRY (G)	L	L	IOP 4	
WHT (W)	M	M	PWR CLR	
W/BLK (X)	N	N	E SET	
W/BRN (Z)	P	P	TTI AC	
W/RED (R)	R	R	SKIP	
W/ORN (O)	S	S	INTERRUPT	
W/YEL (Y)	T	T	MEM DONE	
W/GRN (N)	↓ U	↓ U	IOT 032	
W/BLU (B)	PF01V	MF36V	GND	
W/VIO (V)				

DRAWN 3/15/65
 S Clippinger

CHECKED *[Signature]* 3/15/65
 ENG


DIGITAL
 EQUIPMENT CORPORATION
 MAYNARD, MASSACHUSETTS

INTERCHASSIS CONNECTOR
 TITLE
 PROCESSOR & MEMORY CHASSIS CONNECTOR

APPLY																			
ECO. NO.																			
REV. LTR.																			

DWG NO A-8-0-30 REV. LTR. **B**
 SHEET 6 OF 7 CODE CL

JACK <input type="checkbox"/>		PLUG <input checked="" type="checkbox"/>		LOCATION, LENGTH, ROUTE	
FEMALE <input type="checkbox"/>		MALE <input checked="" type="checkbox"/>		PD#2 & MD35	
COLOR	PIN	PIN	NAME	REMARKS	
W/BLK (X)	PD#2A	MD35A	JMS		
W/BRN (Z)	↑ B	↑ B	INT ACK		
W/RED (R)	C	C	GND		
W/ORN (O)	D	D	SR → PC		
W/YEL (Y)	E	E	MB → PC ENABLE 0-4		
W/GRN (N)	F	F	0 → PC ₅₋₁₁		
W/BLU (B)	H	H	OPR		
W/VIO (V)	J	J	IM 6		
W/GRY (G)	K	K	↑ 9		
WHT (W)	L	L	7		
W/BLK (X)	M	M	10		
W/BRN (Z)	N	N	↓ 8		
W/RED (R)	P	P	IM 11		
W/ORN (O)	R	R	MB → PC ENABLE 0-4		
W/YEL (Y)	S	S	MEM. EXT.		
W/GRN (N)	T	T	IOT		
W/BLU (B)	↓ U	↓ U	INT. INHIBIT		
W/VIO (V)	PD#2V	MD35V	GND		
DRAWN S Clippinger 3/15/65		EQUIPMENT CORPORATION MAYNARD, MASSACHUSETTS		TITLE PROCESSOR & MEMORY CHASSIS CONNECTOR	
CHECKED <i>[Signature]</i> 3/15/65		APPRV		DWG NO A-8-0-30	
ENG		REV. LTR.		REV. LTR. B	
		EQO. NO.		SHEET 7 OF 7	
		REV. LTR.		CODE CE	