



# Apple LaserWriter 16/600 PS

## Features

### Excellent print quality

- Offers 600 dpi resolution, enhanced with built-in FinePrint technology for precise, smooth text and line art
- Includes built-in support for PhotoGrade greyscale image enhancement (requires an additional 4MB of RAM)
- Provides a choice of 64 scalable TrueType™ fonts for printing in any size and in a wide variety of styles

### High performance

- Comes with 8MB of RAM, expandable up to 32MB
- Includes a powerful RISC processor: the 25 MHz AMD 29030
- Features a dedicated I/O processor
- Prints an impressive 16 pages per minute (A4), which makes it the fastest printer in its price range. Prints 17 pages per minute letter size.

### Robust networking and multiplatform compatibility

- Supports any LocalTalk network
- Provides built-in support for Novell NetWare IPX, EtherTalk and TCP/IP Ethernet networks
- Includes a parallel port for bidirectional parallel communications
- Provides automatic emulation, protocol and port switching
- Allows simultaneous connection to Macintosh, MS-DOS, Windows and UNIX computing environments

### Expandability

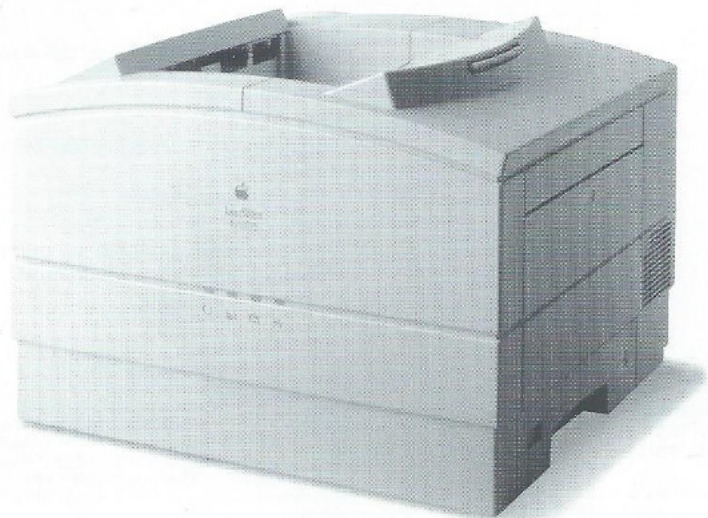
- Supports optional large capacity internal and external hard disk drives for additional font storage
- Offers optional Fax Card, which lets your printer send and receive both Group III and PostScript faxes
- Lets you expand its paper handling capabilities with an optional 500 sheet feeder and 75 envelope feeder
- Complies with EPA's EnergyStar guidelines for energy-efficient operation

The Apple™ LaserWriter™ 16/600 PS is a high performance PostScript™ laser printer that offers a number of advanced capabilities, including exceptional print quality, unrivaled speed, extensive networking compatibility and flexible expansion options. It's ideal for workgroup users who require superior quality output, have demanding printing needs and work in organisations with Macintosh™, Windows™, Novell Netware or multivendor computing environments.

With its 600 dots per inch resolution enhanced with FinePrint™ technology, in addition to its PhotoGrade™ support, the Apple LaserWriter 16/600 PS provides the outstanding print quality you need – fast. In fact, the printer features a fast print engine, high performance RISC processor-based controller and dedicated input/output processor, which combine to provide impressive printing speed. This high performance is supported by the Apple LaserWriter 16/600 PS printer's extensive connectivity capabilities, which allow it to be shared easily by users of Macintosh, Power Macintosh™, MS-DOS®, Windows and UNIX® systems. The Apple LaserWriter 16/600 PS features built-in support for Ethernet networking (through EtherTalk™, TCP/IP

or Novell NetWare) as well as a bidirectional parallel port and a LocalTalk™ port. All ports stay active simultaneously, so the Apple LaserWriter 16/600 PS can accept jobs from a variety of computers without the users having to change a single setting. To support this extensive connectivity, the printer features automatic port, protocol and emulation switching (between the PostScript Level 2 and PCL 5 languages).

In addition to its outstanding print capabilities, the Apple LaserWriter 16/600 PS printer offers yet another way to communicate – through fax transmission. When you add the user-installable Fax Card, you can use the printer to exchange faxes with any Group III or PostScript fax machine, from both Macintosh and Windows computers. Faxes that you receive are printed on plain paper at up to 600 dots per inch resolution, offering print quality far better than that of most dedicated fax machines or other fax card solutions. And this convenient fax send-and-receive capability is accessible to anyone's computer on the network, making it yet another way in which the Apple LaserWriter 16/600 PS makes superior functionality an economical proposition.





# Apple LaserWriter 16/600 PS

## Ordering Information

### Apple LaserWriter 16/600 PS

- Apple LaserWriter 16/600 PS
- Toner cartridge
- User's guide
- Limited warranty

### Options and accessories

- LaserWriter Toner Cartridge
- LaserWriter 16/600 PS 500 Sheet Feeder (supports A4, B5, letter, legal paper) Includes 500 sheet universal cassette
- LaserWriter 16/600 PS Envelope Feeder (capacity for 75 envelopes)
- LaserWriter 500 Sheet Universal Cassette (supports A4, B5, letter, legal paper)
- LaserWriter 250 Sheet Universal Cassette (supports A4, B5, letter, legal paper)
- LaserWriter 16/600 PS Fax Kit (International)
- LaserWriter 16/600 PS 245MB Internal Hard Disk Drive
- Macintosh 4MB Memory Expansion Kit (1-4MB SIMM)
- Apple Ethernet Thin Coax Transceiver (cable not included)
- Apple Ethernet AUI Adaptor
- Apple Ethernet Twisted-Pair Transceiver

## Technical Specifications

### Print engine and controller

- True laser engine
- 25 MHz AMD 29030 RISC processor
- 80C186 I/O processor

### Print quality

- 600 dpi resolution
- FinePrint, Apple resolution enhancement technology
- Enhanced 600 dpi greyscale imaging:
  - Standard (effective 106 lines/inch dithered halftone, 122 grey levels)
  - PhotoGrade, Apple graphic image enhancement technology (requires an additional 4MB of RAM for a total of 12MB minimum)

### Memory

- 8MB of RAM standard
- Expandable to 32MB with optional upgrades

### Interfaces

- Simultaneous connection to Ethernet, LocalTalk and bidirectional parallel interfaces
- Simultaneous support for AppleTalk, Novell NetWare IPX and TCP/IP networking protocols
- Internal and external SCSI ports for hard disk font storage

### Print speed

- 16 (A4 size) to 17 (letter size) pages per minute (actual speed varies depending on images printed and computer used)

### Fonts

- Apple Font Library: 64 fonts total
  - 29 fonts in ROM from the following font families: ITC Avant Garde Gothic™, ITC Bookman™, Courier, Helvetica™, Helvetica Narrow, New Century Schoolbook, Palatino™, Symbol, Times™, ITC Zapf Chancery™ and ITC Zapf Dingbats™
  - 35 fonts on Macintosh disk from the following font families: Chicago™, Delphian, ITC Garamond™ Narrow, Geneva™, Helvetica Black, Helvetica Compressed, Lubalin Graph, Lucida Bright, Machine, Monaco™, Nadianne, New York™, Old English Text, Onyz, Oxford, Swing and Zeal™
- Prints any TrueType or PostScript fonts

### Languages supported

- PostScript Level 2
- PCL 5

### Storage

- Optional internal 245MB hard disk drive

### Paper capacities

- Standard
  - 100 sheet multipurpose tray (also holds up to 10 envelopes)
  - 250 sheet letter cassette
- Optional
  - 500 sheet feeder (with universal cassette)
  - Envelope feeder: up to 75 envelopes

### Print materials

- Media: 60 to 80 gm<sup>2</sup> (20 to 24 lb.) stock from cassette; up to 135gm<sup>2</sup> stock (32 lb.) manually
- Paper: A4, A5, B5, US letter and US legal
- Labels, envelopes, most textured stock and transparencies
- Envelopes: C5, DL and Monarch,

### Power requirements

- European version:
  - 198 – 264 VAC, 48 – 52 Hz

### Power consumption

- Operating mode: 390 watts (printing)
- Standby mode: 125 watts (standby)
- Energy-saving mode: 26 watts

### Environmental requirements

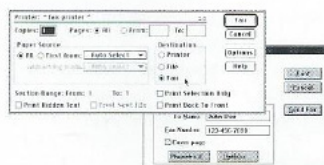
- Temperature: 10 to 32°C (50 to 90°F)
- Humidity: 20% to 80% non-condensing
- Toner cartridge transit environment: -20 to 40°C (-4 to 104°F)

### Size and weight

- Height: 30.7 cm (12.1 inches)
- Width: 42.4 cm (16.7 inches)
- Depth: 42.9 cm (16.9 inches)
- Weight: 18.0 kg (40.0 lb.)

### System requirements

- One of the following personal computers:
  - An Apple Macintosh computer with system software version 7.1 or later and at least 4MB of RAM. QuickDraw GX is also supported.
  - An IBM or IBM compatible computer with Microsoft Windows versions 3.1 or later and at least 1MB of RAM (2MB recommended) or MS-DOS version 3.3 or later and at least 640K of RAM.



Just one LaserWriter 16/600 PS with a PostScript Fax Card gives every Macintosh or PC user on the network a laser printer and a plain-paper fax machine.



When you use the Fax Card, you'll deliver higher quality output than you would if you used a computer fax modem or standard fax machine. You'll get the best results of all when you send from one PostScript fax printer to another.

## Apple Computer U.K. Limited

6 Roundwood Avenue  
Stockley Park  
Uxbridge, UB11 1BB

For further information,  
call free on 0800 127753

© October 1994 Apple Computer, Inc. All rights reserved. The Apple logo is a registered trademark, and Apple, Chicago, EtherTalk, FinePrint, Geneva, LaserWriter, LocalTalk, Macintosh, Monaco, New York, PhotoGrade, TrueType and Zeal are trademarks of Apple Computer, Inc., registered in the U.S.A. and other countries. Adobe and PostScript are trademarks of Adobe Systems Incorporated, which may be registered in certain jurisdictions. Helvetica, Times, and Palatino are registered trademarks of Linotype-Hell AG and/or its subsidiaries. ITC Avant Garde Gothic, ITC Bookman, ITC Garamond, ITC Zapf Chancery and ITC Zapf Dingbats are registered trademarks of International Typeface Corporation. MS-DOS is a registered trademark, and Windows is a trademark of Microsoft Corporation. UNIX is a registered trademark of UNIX System Laboratories. Mention of non Apple products is for informational purposes only and constitutes neither an endorsement nor a recommendation. Apple assumes no responsibility with regard to the selection, performance or use of these products. All understandings, agreements or warranties, if any, take place directly between the vendors and the prospective users. October 1994. Product specifications are subject to change without notice. Check with your Apple Authorised Reseller for the most current information about product specifications and configurations. Printed in the U.K. on recycled paper. APF-PSH-218

